



SAFETY AT WORK



CUSTOMIZED  
FIRST AID  
SOLUTIONS

plum  
Safety

# Welcome to Plum Safety

We are international experts and offer high quality products and expert knowledge within first aid solutions and hygiene for the workplace.

We want you to be safe at work!

---

## WORKPLACE HYGIENE & FIRST AID

Accidents happen every day. Minimize the extent and impact by making sure you have the right first aid solutions available where accidents can happen.

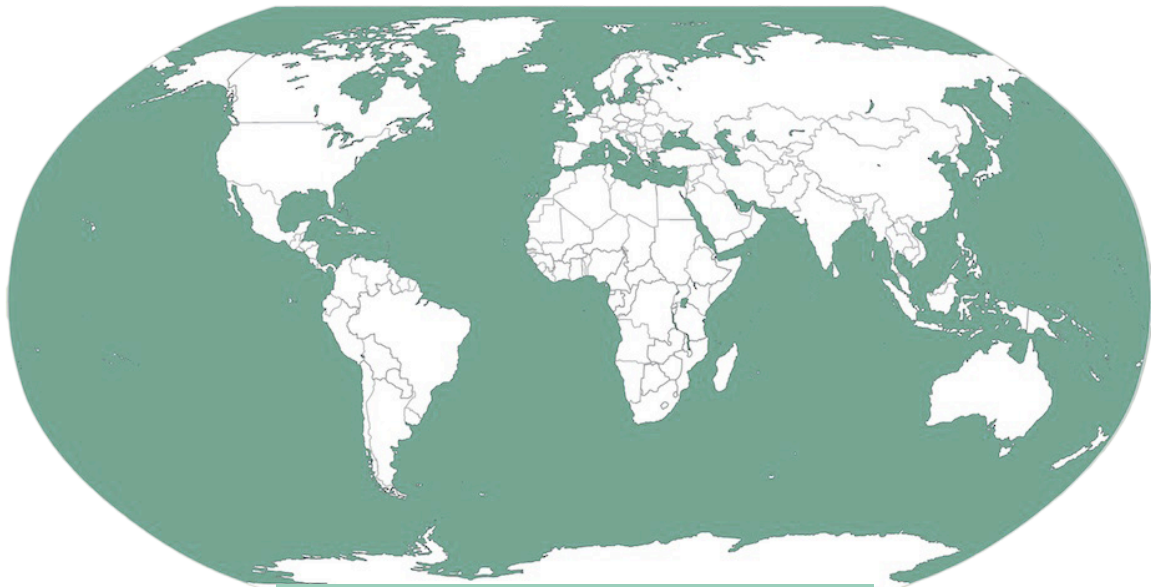
A first aid solution tailored to your workplace will help you prepare for accidents and quickly treat eye injuries, cuts and minor wounds in a safe and hygienic way.

A wide range of eyewash, plasters, decontamination solutions, burn gel, and wound cleansing wipes, helps to quickly treat you or your colleague and minimize the damage of an accident.

It is essential that the mix of safety products is fitted to the requirements of your workplace.

## GLOBAL FOOTPRINT

We have a global footprint and are represented in most of the world. Reach out if you need us to help you find your safety supplier!



You are welcome to contact us  
[info@plum.eu](mailto:info@plum.eu)  
+45 69 16 96 00



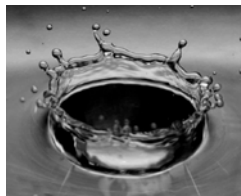
# Table of content

---

Protect your people .....	4
Plum Safety Reminder App .....	5
How to choose the correct eyewash .....	6
How to place eyewash bottles .....	8
Plum Eyewash 0.9% Sodium Chloride .....	10
Plum Eyewash pH Neutral 4.9% Phosphate .....	12
Plum Wound & Eyewash Spray .....	14
Eyewash stations .....	16
Plum iBox .....	19
Eyewash boxes .....	22
Plum QuickFix plasters & dispensers .....	24
Plum QuickSoft Cohesive Bandage .....	30
Plum QuickSafe® .....	32
Plum Pull1Aid® .....	38
Wound and eye care .....	40
Fire Safety .....	42
Plum Safety in brief .....	43

# Protect your people Equip your facility right

Quick and easy access to first aid will limit the impact of accidents and keep your workplace safe



Accidents happen every day. Minimize the extent and impact by making sure you have the right first aid solutions available where accidents can happen. A first aid solution tailored to your workplace will help you prepare for accidents and quickly treat eye injuries, cuts and minor wounds in a safe and hygienic way.

## QUICK AND EFFECTIVE HELP TAILORED TO YOUR BUSINESS

A wide range of eyewash, plasters, burn gel and wound cleansing wipes, helps to quickly treat you or your colleague and minimize the damage of an accident. It is essential that the mix of safety products is fitted to the requirements of your workplace.

We will help you find the right solution, whether you work in an office or handle acids or alkali in a high-risk environment like charging batteries, industrial cleaning, laboratory work or petrochemical industry.

## PRACTICAL SOLUTIONS FOR BUSY WORKING DAYS

Your hands, your eyes and your head are your most important working tools. Even a small incident can affect your work, and larger ones may cause an even greater impact if you are not prepared. By taking the correct precautions, you enable yourself to have the right first aid within reach, whereby many smaller everyday accidents can be minimized significantly.



*Our eyewash is easy to use if an accident happens*



*Turn the eyecup in the direction of the arrow 360° until the seal breaks*



*Lean back, squeeze the bottle gently and rinse*



*Or lean forward and rinse by squeezing the bottle gently*

Free account. Unlimited products. Auto notifications. Log inspections.

# SIMPLE & EFFICIENT TOOL FOR MANAGEMENT OF EXPIRY DATES

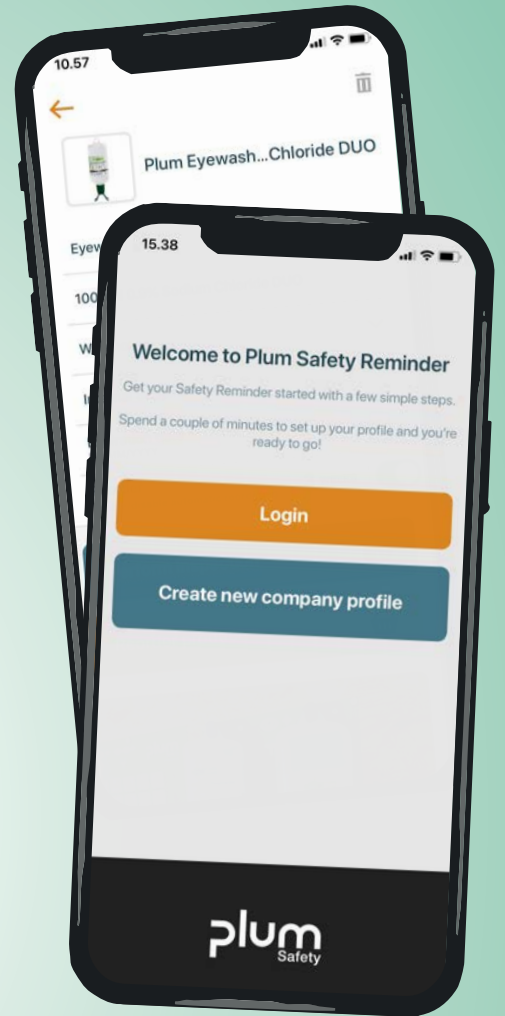
Help your customer and position yourself as dealer in the app Plum Safety Reminder - a free tool for efficient management of expiry dates

Developed to make life easier for employees responsible for safety products by offering a complete product overview and automatic email alerts.

## FEATURES

- ✓ Free account
- ✓ Simple management of expiration dates and product usage report
- ✓ Automatic email alerts
- ✓ Manage multiple locations
- ✓ ... and multiple dealers
- ✓ Scan products to load information
- ✓ Log function for inspections

**+45 6916 9600**  
**info@plum.eu**



**SCAN &  
DOWNLOAD  
NOW**



**plum**  
Safety

# How to choose the correct eyewash

When it comes to eye accidents, the harmful substance varies and you need to choose the right eyewash accordingly

The cause of an accident determines which eyewash is required. When an accident occurs, it is essential to determine whether it is caused by either a foreign object or by acids or alkali - and if possible, which pH value the substance in question holds.

## Know your chemicals and ensure the best suited first aid.

An eyewash plan helps you choose the right eyewash by clear guidelines. Place the eyewash plan next to the eyewash stations, boxes and Plum QuickSafe®.



How to choose the correct eyewash and use it with an eyecup



How to choose the correct eyewash and use it with a DUO eyecup



Art.no. 956480B

Dimensions: W: 22,8 x H: 29,0 cm

The pH scale ranges from 0 to 14 and measures how acidic or alkalic a substance is.

- A pH of 7 is neutral
- A pH less than 7 is acidic
- A pH greater than 7 is alkalic

When pH is either strongly acidic or alkalic, start by rinsing with Plum Eyewash pH Neutral 4.9% Phosphate until the bottle is empty. Discard the bottle and rinse with Plum Eyewash 0.9% Sodium Chloride until you reach a doctor or the emergency room.

When pH is neutral, rinse with Plum Eyewash 0.9% Sodium Chloride until the bottle is empty and discard the bottle after use.

The poster features a central pH scale from 0 to 14. Above the scale are two eye icons with '+' signs. To the right is the 'plum Safety' logo and the website 'www.plum.eu'. The scale is divided into four sections: 14-7 (strongly acidic/alkalic), 7 (neutral), and 0-7 (acidic/alkalic). Each section contains a 5-step illustrated procedure: 1. Shake the bottle 360 degrees; 2. Tilt head back and pour; 3. Stand and discard; 4. Repeat with Sodium Chloride; 5. Seek medical help. At the bottom, there are QR codes and icons for HF (hydrofluoric acid) and DUO eyecups. A 145 cm height mark is indicated on the right side.

QR-code: :  
How to use eyewash :  
with eyecup :  
(animation video)

QR-code: :  
How to use eyewash with :  
DUO eyecup :  
(animation video)

Mount the eyewash plan on the wall :  
next to the eyewash station. Mark off :  
145 cm from the floor and place the :  
eyewash plan according to the mark.





## Rinse both eyes simultaneously

You no longer have to choose which eye to save. Plum DUO eyecup is a unique solution and allows you to rinse both eyes at the same time and save them both

---

### **MANY ACCIDENTS AFFECT BOTH EYES**

Eye accidents involving chemicals often affect both eyes. A DUO eyecup helps you prepare, because it allows rinsing of both eyes at the same time. Stop worrying about which eye to save, save them both at once instead.

### **EYECUP FOR OPTIMAL RINSING**

Apart from the strength of the acid or alkali, the contact time is the most critical factor in accidents involving acids and alkali. It is key that the available first aid neutralize the harmful substance as quickly as possible. With the unique DUO eyecup, you can treat both eyes at the same time.

The eyecup is shaped to help you keep your eyes open during rinsing and ensure the correct flow of liquid and rinsing time.

Plum Eyewash 0.9% Sodium Chloride and Plum Eyewash pH Neutral 4.9% Phosphate are disposable products, which ensure that the rinsing liquid is sterile every time

# How to place eyewash bottles

and why it is important always to turn the bottle upside down



Pictograms instructing you in the correct use of the product



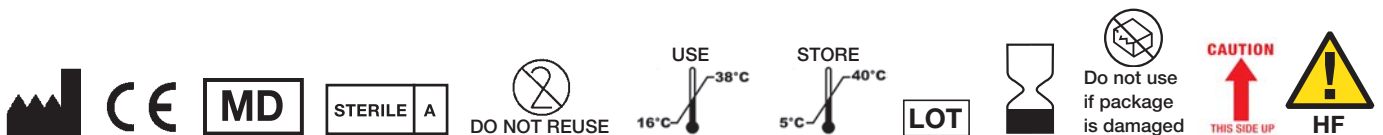
Whether a bottle is inserted into an eyewash station, eyewash box or placed loosely, it is important that it is placed with the bottom facing upwards.

This is indicated by this symbol on the bottle

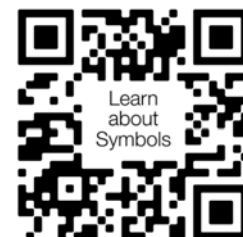


If you use the contents of a bottle and mistakenly save the bottle with any residual fluid, the contents will no longer be sterile. If the activated bottle is inserted correctly, it may leak a bit and you will realise that the bottle has already been opened. This avoids using liquid now being non-sterile and therefore should had been discarded.

Please always pay attention to pictograms and symbols on the bottle to ensure correct and safe use.



You can learn more about the meaning of symbols by using the QR code





# How to place eyewash bottles, when **not** using an eyewash box or station

Wall bracket - for 200 ml and 500 ml bottles - not suitable for DUO bottles



**Green wall bracket**

**Packaging:** 1 pcs

**Article no.:** 956430

Wall bracket for Plum Eyewash 0.9% Sodium Chloride 200 ml and 500 ml (art. no. 4691, 4604)



**Blue wall bracket**

**Packaging:** 1 pcs

**Article no.:** 956431

Wall bracket for Plum Eyewash pH Neutral 4.9% Phosphate 200 ml (art. no. 4752)

Wall hanger - for all 500 ml and 1000 ml bottles



**Green wall hanger**

**Packaging:** 1 pcs

**Article no.:** 956466

Wall hanger for Plum Eyewash 0.9% Sodium Chloride 500 ml and 1000 ml (art. no. 4604, 4707, 4861 and 4800)



**Blue wall hanger**

**Packaging:** 1 pcs

**Article no.:** 956407

Wall hanger for Plum Eyewash pH Neutral 4.9% Phosphate DUO 500 ml (art. no. 4801)



## Eyewash in case of foreign objects

Plum Eyewash 0.9% Sodium Chloride Solution eases discomfort and prevents subsequent complications caused by foreign bodies in the eyes

---

You can easily get a foreign object in your eye. Dirt, dust, or paint from your hands all pose a risk for your eyes. The risk increases when working with machines and tools that can cause wood or metal splinters in your eyes.

Getting a foreign body in your eye can be extremely unpleasant, as the eye is highly sensitive. Without treatment, it can develop into an inflammation of the eye, cornea or iris. By rinsing immediately after the incident, you can prevent this and decrease the risk of subsequent complications.

This eyewash contains a sterile saline solution of 0.9% sodium chloride, which is similar to the eye's natural fluid. Squeeze the bottle gently to generate a soft and pleasant flow. The eyewash product range includes everything from a small handy bottle that you can carry with you, to wall-mounted stations that makes it quick and easy to get help in case of an emergency.



**200 ML / 500 ML / 1000 ML  
PLUM EYEWASH 0.9% SODIUM CHLORIDE**

The bottles contain a sterile solution and can be used individually or as refills in eyewash stations and boxes. The 200 ml bottle is easy to store in the specially designed belt bag, in the first aid kit, in the toolbox, etc.

<b>Content:</b>	200 ml	<b>Content:</b>	500 ml	<b>Content:</b>	1000 ml
<b>Packaging:</b>	10 x 200 ml	<b>Packaging:</b>	12 x 500 ml	<b>Packaging:</b>	6 x 1000 ml
<b>Article no:</b>	4691	<b>Article no:</b>	4604	<b>Article no:</b>	4707
		<b>Packaging:</b>	3 x 500 ml		
		<b>Article no:</b>	4613		



**5 X 20 ML REFILL  
PLUM EYEWASH 0.9% SODIUM CHLORIDE QUICKRINSE**

5 eyewash ampoules with 20 ml 0.9% sterile sodium chloride solution. For use individually or for refilling Plum QuickSafe®, Plum QuickFix&Rinse and Plum QuickRinse dispensers.

<b>Content:</b>	5 x 20 ml
<b>Packaging:</b>	4 x 5 x 20 ml
<b>Article no:</b>	5160



**500 ML / 1000 ML  
PLUM EYEWASH 0.9% SODIUM CHLORIDE DUO**

The ergonomic DUO eyecup makes it possible to rinse both eyes at the same time.

<b>Content:</b>	500 ml
<b>Packaging:</b>	6 x 500 ml
<b>Article no:</b>	4861
<b>Content:</b>	1000 ml
<b>Packaging:</b>	6 x 1000 ml
<b>Article no:</b>	4800



**200 ML / 500 ML  
PLUM EYEWASH 0.9% SODIUM CHLORIDE - SINGLE CARTONS**

The carton protects the bottle. Suitable for mobile workplaces or for refilling stations.

<b>Content:</b>	200 ml
<b>Packaging:</b>	10 x 200 ml
<b>Article no:</b>	4695
<b>Content:</b>	500 ml
<b>Packaging:</b>	12 x 500 ml
<b>Article no:</b>	4605



**3 X 500 ML  
PLUM EYEWASH 0.9% SODIUM CHLORIDE - ON-THE-GO**

Practical and handy set with 3 bottles of eyewash. Easy to take with you in the car or on the way to a doctor or the emergency room.

<b>Content:</b>	3 x 500 ml
<b>Packaging:</b>	4 x 3 x 500 ml
<b>Article no:</b>	4620



# Eyewash in case of chemical accidents

Plum Eyewash pH Neutral 4.9% Phosphate neutralizes acids and alkali and quickly flush them from the eye during rinsing

## IMPORTANT



Reservation is made for hydrofluoric acid, which is toxic and highly corrosive to eyes, skin, and bones. Plum Eyewash pH Neutral 4.9% Phosphate is not intended as first aid for eye accidents involving hydrofluoric acid, because it does not limit the corrosive effect of HF.

## RECOMMENDED USE OF PLUM EYEWASH PH NEUTRAL 4.9% PHOSPHATE

This eyewash solution is for accidents involving acids and alkali. Rinse with Plum Eyewash pH Neutral 4.9% Phosphate to neutralize the pH value of the harmful substance to a harmless level as quickly as possible. Continue rinsing with Plum Eyewash 0.9% Sodium Chloride until you reach a doctor or emergency room.

## DANGEROUS CHEMICALS ARE EVERYWHERE

In many jobs, businesses and industries, there is a risk of being exposed to serious eye injuries caused by chemicals e.g. in chemical factories, the recycling industry, on construction sites and in the mining industry. You need a neutralizing eyewash to minimize the impact of the accident.

Acids and alkali can break down the structure of skin and mucosa membranes. The severity of corrosion injuries depends primarily on:

- The concentration of the chemical - Strong acids and alkali are extremely corrosive
- The temperature - A high temperature increases the corrosive properties of the chemical
- The duration of contact - The longer the duration, the deeper the harmful substance will penetrate

## A FEW SECONDS CAN MAKE THE DIFFERENCE

In case of eye injuries involving acids and alkali, it is crucial to neutralize the chemical as quickly as possible to a pH level of approximately 7.4, corresponding to the normal pH level of the eye's fluid - before the acid or alkali has penetrated the cornea.

To optimize safety where there is a risk of acid and alkali injuries, the eyewash solution must be:

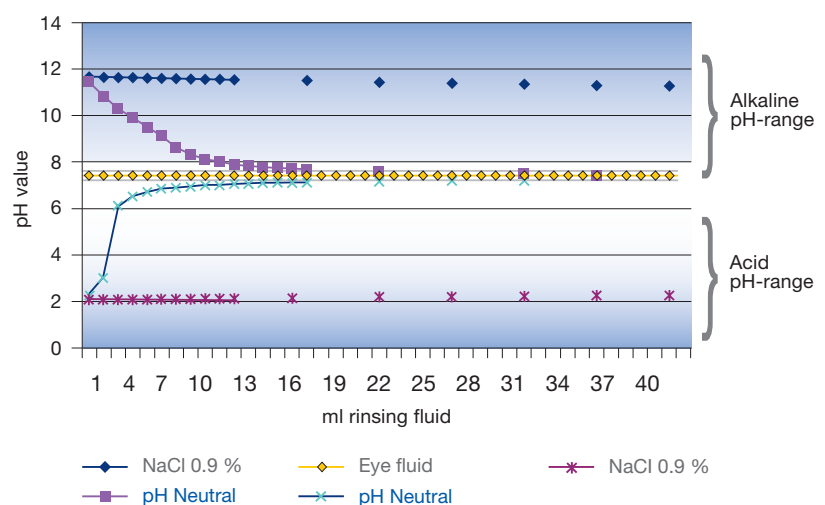
- Easily accessible
- Quick to use
- Effective

## QUICK AND EFFECTIVE EYEWASH IS THE KEY

Plum Eyewash pH Neutral 4.9% phosphate is a buffer which quickly and effectively neutralizes even strong acids and alkali. The liquid consists of phosphate salts that are present in the body. The hydrogen phosphate buffer is effective against acids, whereas the dihydrogen phosphate buffer reacts against alkali. The effect of Plum Eyewash pH Neutral 4.9% Phosphate has been documented in scientific studies.<sup>1) 2)</sup>

We have tested the neutralizing effect of Plum Eyewash pH Neutral 4.9% Phosphate for both strong acids and alkali compared with the effect of saline eyewash with 0.9% sodium chloride. The test clearly shows that Plum Eyewash pH Neutral 4.9% Phosphate quickly neutralizes both acids and alkali to a harmless pH level. Saline eyewash dilutes the liquid, but only small changes to the pH value are obtained (Figure 1).

Figure 1: Neutralizing effect of Plum Eyewash pH Neutral 4.9% Phosphate and 0.9% sodium chloride



1: Prof. Dr. med. Schrage N.F., Facharzt für Augenheilkunde an der Augenklinik Merheim, Ostmerheimer Str. 200 in 51109 Köln, in Kooperation mit dem Aachener Centrum für Technologietransfer in der Ophthalmologie ACTO, Geschäftsstelle Karlsburgweg 9 in 52070 Aachen, Vortrag: Augenverätzungen. Was gibt es Neues? Regionalforum Arbeitsmedizin, Stuttgart 23.02.2006, Folien 44 ff.  
2: Prof. Dr. med. Schrage N.F., Facharzt für Augenheilkunde an der Augenklinik Merheim, Ostmerheimer Str. 200 in 51109 Köln, in Kooperation mit dem Aachener Centrum für Technologietransfer in der Ophthalmologie ACTO, Geschäftsstelle Karlsburgweg 9 in 52070 Aachen, Vergleichsergebnisse von Plum pH Neutral an verätzten Augen, Spülversuche an mit NaOH verätzten Kanichenaugen im Vergleich von Plum pH Neutral mit physiologischer Kochsalzlösung, 24.05.2005.



**200 ML - SINGLE CARTON  
PLUM EYEWASH PH NEUTRAL  
4.9% PHOSPHATE**

Bottles with a 4.9% sterile phosphate buffer solution that quickly neutralizes acids and alkali. They can be used individually or as refills in eyewash stations and boxes.

The carton protects the bottle and is suitable for refilling stations and for mobile workplaces.

**Content:** 200 ml  
**Packaging:** 10 x 200 ml  
**Article no:** 4755



**200 ML  
PLUM EYEWASH PH NEUTRAL  
4.9% PHOSPHATE**

The 200 ml bottle is easy to use in the first aid box, in the toolbox, etc.

**Content:** 200 ml  
**Packaging:** 10 x 200 ml  
**Article no:** 4752



**500 ML  
PLUM EYEWASH PH NEUTRAL  
4.9% PHOSPHATE DUO**

The 500 ml bottle comes with the ergonomic DUO eyecup making it possible to rinse both eyes at the same time.

**Content:** 500 ml  
**Packaging:** 6 x 500 ml  
**Article no:** 4801



**” ACCIDENTS INVOLVING  
ACIDS AND ALKALI WILL  
HAPPEN WHEN YOU  
LEAST EXPECT THEM**

Plum Eyewash pH Neutral 4.9% Phosphate DUO saved the eyesight of a SITA France employee. They handle plastic waste like plastic bottles with cleaning detergents. The liquid from a cleaning bottle went into both eyes of the employee. Thanks to this eyewash solution, the harmful substance was neutralized, and the employee was already back at work the next day.



*Plum Wound and Eyewash Sprays are portable, easy to use and saline-based sprays. They work at any angle and provide a balanced and soft flow rate. Ideal for the industrial sector, production industry, laboratories, transport of dangerous goods, first responders, law enforcement, firefighters, military and first rescue services.*

# Plum Wound and Eyewash Spray

Quick and easy to use within seconds  
- for skin and eyes!

Gentle wound and eyewash spray used for minor accidents like cuts and scrapes on the skin or rinsing dust and dirt from wounds and eyes. They offer safe rinsing with a quick and easy single hand operation. The dust cap protects the spray nozzle from contamination, the spray is suitable for multiple use and the can is fully recyclable.

A quick and easy solution that minimizes the risk of further infection or damage.



*Cleanse the nozzle before use by briefly spraying in the air.*



*Place the nozzle minimum 10 cm from the wound or eye. Press the nozzle and spray. Avoid letting the nozzle touch the wound or the eye.*







50 ML / 250 ML

**PLUM WOUND AND EYEWASH SPRAY**

A 0.9% sodium chloride solution that gives immediate care to minor accidents such as cuts and scrapes on the skin or dust and dirt in the eyes. Helps minimize the risk of further infection or damage.



250 ML

**WALL BRACKET**

Make your first aid visible by mounting the Plum Wound and Eyewash Spray cans on the wall. This simple wall bracket will save you minutes if a minor eye injury or damages on the skin occur. Then you do not have to search for your Plum Wound and Eyewash Spray but it will be close at hand.

Plum Wound and Eyewash Spray is CE marked according to the Guidelines for Classification of Medical Device Directive (MDD 93/42/EEC)

**Plum Wound and Eyewash Spray**

**Content:** 50 ml  
**Packaging:** 24 x 50 ml  
**Article no:** 45530  
**Languages:** en, de, sv, da, fr, no, fi, pt, it, nl, es, pl, is

**Bracket for 250 ml spray**

**Content:** 1  
**Packaging:** 24 pcs  
**Article no:** 4123

**Content:** 250 ml  
**Packaging:** 12 x 250 ml  
**Article no:** 4554  
**Wall bracket:** 4123

**Product benefits**

- Sterile until empty - allows repeated use
- Quick and easy single hand operation
- Safe rinsing
- Dust cap to protect the spray nozzle from contamination
- Easy to transport, classed as a non-flammable aerosol
- Up to 100% product emptying
- The can is fully recyclable
- Hypoallergenic
- Sterile solution without preservatives
- Shelf-life of 3 years
- Expiry date on the bottom of the can



# Open eyewash stations

An open wall-mounted solution gives a good overview and quick and easy access to first aid

## PROTECT YOUR COLLEAGUES, MAKE FIRST AID AVAILABLE

When an accident has happened, it is too late to look for help in a box or in a cupboard.

Systematize first aid with a wall-mounted station and make it easy to access when an accident happens. Choose between open wall stations and box solutions. The latter are particularly suitable for dusty work environments to protect the bottles and avoid adding more dust to an accident.

Make sure to have additional bottles at hand so that rinsing can continue on the way to further treatment.

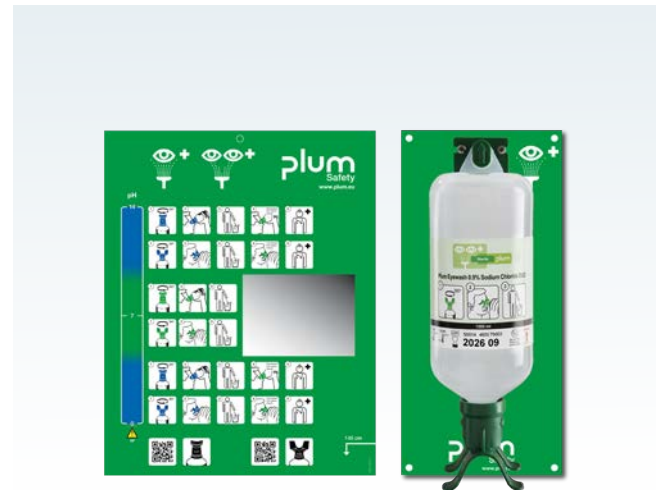
## EASY TO MOUNT

All wall stations are easy to mount and are delivered with pictograms that clearly shows how to use the products.



### PLUM EYEWASH STATION

Wall station with 500 ml Plum Eyewash 0.9% Sodium Chloride. Particularly suitable for small and mobile workplaces.



### PLUM EYEWASH STATION FOR DUO BOTTLE

Wall station with 1000 ml Plum Eyewash 0.9% Sodium Chloride DUO. Particularly suitable for small and mobile workplaces where prolonged rinsing of both eyes may be required.

<b>Packaging:</b>	1
<b>Article no:</b>	4611
<b>Refill 500 ml eyewash, article no:</b>	4604
<b>Dimensions:</b>	
Eyewash plan	h: 29 x w: 22,8 cm
Mounting plate	h: 29 x w: 13,5 cm

<b>Packaging:</b>	1
<b>Article no:</b>	4802
<b>Refill 1000 ml eyewash, article no:</b>	4800
<b>Dimensions:</b>	
Eyewash plan	h: 29 x w: 22,8 cm
Mounting plate	h: 29 x w: 13,5 cm



### PLUM COMBI-STATION

Wall station with 200 ml Plum Eyewash pH Neutral 4.9% Phosphate and 500 ml Plum Eyewash 0.9% Sodium Chloride. Particularly suitable for places where there is a risk of getting both foreign bodies and acids and alkali in the eyes.

<b>Packaging:</b>	1
<b>Article no:</b>	4770
<b>Refill 200 ml eyewash, article no:</b>	4752
<b>Refill 500 ml eyewash, article no:</b>	4604 / 4613
<b>Dimensions:</b>	
Eyewash plan	h: 29 x w: 22,8 cm
Mounting plate	h: 29 x w: 22,8 cm



### PLUM COMBI-STATION FOR DUO BOTTLES

Wall station with 500 ml Plum Eyewash pH Neutral 4.9% Phosphate DUO and 1000 ml Plum Eyewash 0.9% Sodium Chloride DUO. Particularly suitable for places where there is a risk of getting both foreign bodies and acids and alkali in the eyes and where there is a risk that both eyes will be affected.

<b>Packaging:</b>	1
<b>Article no:</b>	4803
<b>Refill 500 ml eyewash, article no:</b>	4801
<b>Refill 1000 ml eyewash, article no:</b>	4800
<b>Dimensions:</b>	
Eyewash plan	h: 29 x w: 22,8 cm
Mounting plate	h: 29 x w: 22,8 cm



### PLUM EYEWASH STATION

Wall station with 2 x 500 ml Plum Eyewash 0.9% Sodium Chloride. Particularly suitable for clean environments and small workplaces where there is a risk of getting foreign bodies into the eyes.

<b>Packaging:</b>	1
<b>Article no:</b>	4694
<b>Refill 500 ml eyewash, article no:</b>	4604
<b>Dimensions:</b>	
Eyewash plan	h: 29 x w: 22,8 cm
Mounting plate	h: 29 x w: 22,8 cm



### PLUM EYEWASH STATION MAXI

Wall station with 2 x 1000 ml Plum Eyewash 0.9% Sodium Chloride. Particularly suitable for places where prolonged rinsing may be required.

<b>Packaging:</b>	1
<b>Article no:</b>	4708
<b>Refill 1000 ml eyewash, article no:</b>	4707
<b>Dimensions:</b>	
Eyewash plan	h: 29 x w: 22,8 cm
Mounting plate	h: 29 x w: 22,8 cm



The green Plum Eyewash 0.9% Sodium Chloride helps you remove dirt and foreign objects

The blue Plum Eyewash pH Neutral 4.9% Phosphate provides immediate first aid in case of serious accidents involving acids and alkali

The soft bottles are easy to handle and rinse the eye with a soft and even flow

Clear pictograms and symbols show how to store and handle the bottle

The ergonomic soft plastic eyecup is shaped to fit the curve of the eye. Squeeze it together before putting it to your eye. The cup helps keep the eye open and provide the best possible flow of liquid and rinsing time

Quick and easy to open. A single turn breaks the seal and you are ready to rinse

Clear instructions for use

Economic and a long shelf-life of 3,5 years. The expiry date is clearly shown on the label

With the ergonomic DUO eyecup, both eyes can be rinsed at the same time. The cup helps keep the eyes open and provides the best possible flow of liquid and rinsing time

Please note: All used material is made of PE-LD, which is recyclable



# Quickly accessible eyewash solutions

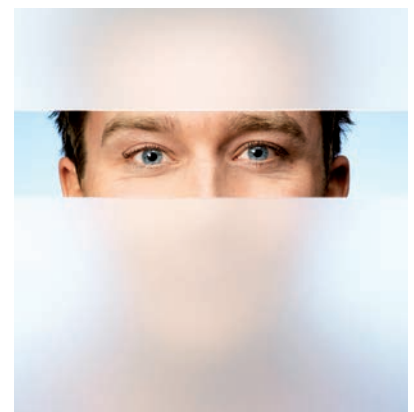
Quick access to eyewash is crucial for all workplaces with a risk of eye injuries, because seconds decide the impact of an accident

## YOU ONLY HAVE TWO EYES – TAKE CARE OF THEM

Your eyesight is one of the most important senses. So, take care of your eyes. Accidents can happen no matter how careful you are. Stay prepared for accidents with the right first aid at the right place. An eyewash solution placed in high risk areas is the best preparation for eye injuries.

## A WIDE RANGE OF UNIQUE RINSING SOLUTIONS

Our top priority is to help you get a safer place to work, and our concepts is developed in close collaboration with skilled eye specialists. This means that the products have been thought through down to the smallest detail. They are easy to use with clear pictograms that show you the correct use. The eyecup helps keep the eye open. The rinsing liquid hits the eye in the right place and with the right amount in a soft and even flow.



The products are CE marked according to the Guidelines for Classification of Medical Device Directive (MDD 93/42/EEC)

# Plum iBox

– designed for your safety

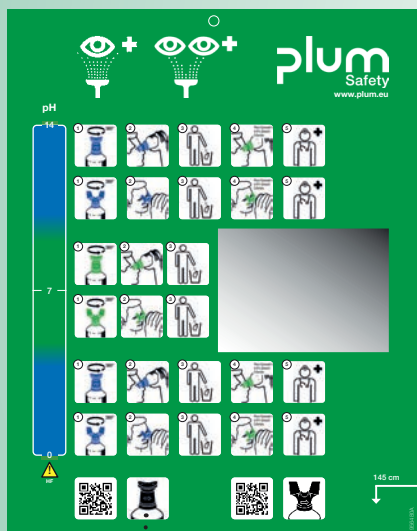
Delivered with wall bracket and wall mounting set



Quick and efficient overview of eyewash bottles and expiry dates

Release from wall bracket and quickly bring to injured person

Quickly accessible eyewash solutions



Delivered with an eyewash plan

Strong and durable material (EPP)



Spacious design lets you grab bottles fast and easily

Easily opens - mounted on the wall or standing on the floor



# Dust-proof and portable eyewash box



## PLUM IBOX 1

Dust-proof and portable eyewash box that fits one eyewash bottle of your choice. Suitable for dusty environments and small workplaces, with a risk of eye injuries.

*Delivered empty*

**Packaging:** 1  
**Article no:** 4900  
**Dimensions:**  
 Eyewash plan h: 29 x w: 22,8 cm  
 iBox 1 h: 42,5 x w: 18,6 x d: 13,5 cm

Plum iBox balances key features in a modern design and is built in a strong and durable material. Designed to accommodate the need for urgent action in case of an emergency by combining the quick product overview from an open station with the dust-proof features from an eyewash box, Plum iBox suits a wide range of workplaces.

A clear see-through window lets you check the bottles' condition and keep track of expiry dates immediately. A spacious design lets you grab bottles fast and easily just as the box opens smoothly - mounted on the wall or standing on the floor. Plum iBox is delivered with wall bracket, eyewash plan and wall mounting set.

Install Plum iBox as close as possible to an exposed area or work station and according to the risk assesment. Release Plum iBox from the wall and quickly bring the eyewash to the injured person. Every second counts!



## PLUM IBOX 1

Dust-proof and portable eyewash box with 1000 ml Plum Eyewash 0.9% Sodium Chloride DUO. Suitable for dusty environments and small workplaces, with a risk of getting foreign bodies into the eyes.

**Packaging:** 1  
**Article no:** 4901  
**Refill 1000 ml eyewash, article no:** 4800  
**Dimensions:**  
 Eyewash plan h: 29 x w: 22,8 cm  
 iBox 1 h: 42,5 x w: 18,6 x d: 13,5 cm



## PLUM IBOX 1

Dust-proof and portable eyewash box with 500 ml Plum Eyewash 0.9% Sodium Chloride. Suitable for dusty environments and small workplaces, with a risk of getting foreign bodies into the eyes.

**Packaging:** 1  
**Article no:** 4902  
**Refill 500 ml eyewash, article no:** 4604 / 4613  
**Dimensions:**  
 Eyewash plan h: 29 x w: 22,8 cm  
 iBox 1 h: 42,5 x w: 18,6 x d: 13,5 cm



## PLUM IBOX 2

Dust-proof and portable eyewash box that fits two eyewash bottles of your choice. Suitable for dusty environments and small workplaces, with a risk of eye injuries.

*Delivered empty*

**Packaging:** 1  
**Article no:** 4920  
**Dimensions:**  
 Eyewash plan h: 29 x w: 22,8 cm  
 iBox 2 h: 42,5 x w: 29 x d: 13,5 cm





### PLUM IBOX 2

Dust-proof and portable eyewash box with 200 ml Plum Eyewash pH Neutral 4.9% Phosphate and 500 ml Plum Eyewash 0.9% Sodium Chloride. Particularly suitable for places where there is a risk of getting both foreign bodies and acids and alkali in the eye.

<b>Packaging:</b>	1
<b>Article no:</b>	4921
<b>Refill 200 ml eyewash, article no:</b>	4752
<b>Refill 500 ml eyewash, article no:</b>	4604 / 4613
<b>Dimensions:</b>	
Eyewash plan	h: 29 x w: 22,8 cm
iBox 2	h: 42,5 x w: 29 x d: 13,5 cm



### PLUM IBOX 2

Dust-proof and portable eyewash box with 2 x 500 ml Plum Eyewash 0.9% Sodium Chloride. Particularly suitable for dusty environments and small workplaces, with a risk of getting foreign bodies into the eyes.

<b>Packaging:</b>	1
<b>Article no:</b>	4922
<b>Refill 500 ml eyewash, article no:</b>	4604 / 4613
<b>Dimensions:</b>	
Eyewash plan	h: 29 x w: 22,8 cm
iBox 2	h: 42,5 x w: 29 x d: 13,5 cm



### PLUM IBOX 2

Dust-proof and portable eyewash box with 500 ml Plum Eyewash pH Neutral 4.9% Phosphate DUO and 1000 ml Plum Eyewash 0.9% Sodium Chloride DUO. Particularly suitable for places with a risk of getting both foreign bodies and acids and alkali in the eyes and where there is a risk that both eyes will be affected.

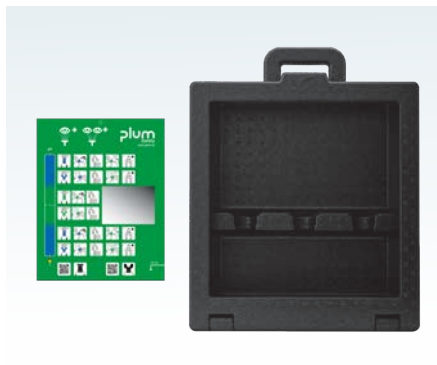
<b>Packaging:</b>	1
<b>Article no:</b>	4923
<b>Refill 500 ml eyewash, article no:</b>	4801
<b>Refill 1000 ml eyewash, article no:</b>	4707
<b>Dimensions:</b>	
Eyewash plan	h: 29 x w: 22,8 cm
iBox 2	h: 42,5 x w: 29 x d: 13,5 cm



### PLUM IBOX 2

Dust-proof and portable eyewash box with 2 x 1000 ml Plum Eyewash 0.9% Sodium Chloride DUO. Particularly suitable for places where prolonged rinsing may be required.

<b>Packaging:</b>	1
<b>Article no:</b>	4924
<b>Refill 1000 ml eyewash, article no:</b>	4707
<b>Dimensions:</b>	
Eyewash plan	h: 29 x w: 22,8 cm
iBox 2	h: 42,5 x w: 29 x d: 13,5 cm



### PLUM IBOX 3

Dust-proof and portable eyewash box that fits three eyewash bottles and one spray bottle. Suitable for dusty environments and small workplaces, with a risk of eye injuries.

*Delivered empty*

<b>Packaging:</b>	1
<b>Article no:</b>	4930
<b>Dimensions:</b>	
Eyewash plan	h: 29 x w: 22,8 cm
iBox 3	h: 47,5 x w: 37,6 x d: 13,5 cm



### PLUM IBOX 3

Dust-proof and portable eyewash box with 200 ml Plum Eyewash pH Neutral 4.9% Phosphate, 500 ml Plum Eyewash 0.9% Sodium Chloride, 1000 ml Plum Eyewash 0.9% Sodium Chloride DUO, and 250 ml Plum Wound and Eyewash Spray. Particularly suitable for places where there is a risk of getting both foreign bodies and acids and alkali in the eye.

<b>Packaging:</b>	1
<b>Article no:</b>	4931
<b>Refill 500 ml eyewash, article no:</b>	4604 / 4613
<b>Refill 200 ml eyewash, article no:</b>	4752
<b>Refill 1000 ml eyewash, article no:</b>	4800
<b>Refill 250 ml spray, article no:</b>	4554
<b>Dimensions:</b>	
Eyewash plan	h: 29 x w: 22,8 cm
iBox 3	h: 47,5 x w: 37,6 x d: 13,5 cm



# Dust-proof eyewash box

A closed station protects your first aid equipment from dirt and dust and keeps the products ready for use

## PLUM COMBI-BOX

Dust-proof eyewash box with 200 ml Plum Eyewash pH Neutral 4.9% Phosphate and 500 ml Plum Eyewash 0.9% Sodium Chloride. Suitable for places where there is a risk of getting both foreign bodies and acids and alkali in the eye.

**Packaging:** 1  
**Article no:** 4789  
**Refill 200 ml eyewash, article no:** 4752  
**Refill 500 ml eyewash, article no:** 4604 / 4613  
**Dimensions:**  
 Eyewash plan h: 29 x w: 22,8 cm  
 Eyewash box h: 28 x w: 23 x d: 11 cm

## REDUCE IMPACT WITH COMBINED RISING

Combined rinsing is recommended in case of accidents involving acids and alkali – first with Plum Eyewash pH Neutral 4.9% Phosphate, then with Plum Eyewash 0.9% Sodium Chloride. A combi-box holds both products and gives quick and easy access. Start by neutralizing the acid or alkali with Plum Eyewash pH Neutral 4.9% Phosphate, continue rinsing with Plum Eyewash 0.9% Sodium Chloride until you reach a doctor or the emergency room.

If you work mostly with liquid chemicals, we recommend Plum Eyewash pH Neutral 4.9% Phosphate DUO. That way you can rinse both eyes at the same time in case of an emergency.

We recommend the open stations for environments without dust and dirt, such as laboratories. The closed stations protect the products in dusty environments. All stations are easy to mount and come with a mirror and pictograms clearly indicating how to use the eyewash bottles.



## PLUM EYEWASH BOX

Dust-proof eyewash box with 2 x 500 ml Plum Eyewash 0.9% Sodium Chloride. Particularly suitable for dusty environments and small workplaces, with a risk of getting foreign bodies into the eyes.

**Packaging:** 1  
**Article no:** 4650  
**Refill 500 ml eyewash, article no:** 4604 / 4613  
**Dimensions:**  
 Eyewash plan h: 29 x w: 22,8 cm  
 Eyewash box h: 28 x w: 23 x d: 11 cm



## PLUM COMBI-BOX DUO

Dust-proof eyewash box with 500 ml Plum Eyewash pH Neutral 4.9% Phosphate DUO and 500 ml Plum Eyewash 0.9% Sodium Chloride DUO. Particularly suitable for places with a risk of getting both foreign bodies and acids and alkali in the eyes and where there is a risk that both eyes will be affected.

**Packaging:** 1  
**Article no:** 4862  
**Refill 500 ml eyewash (blue), article no:** 4801  
**Refill 500 ml eyewash (green), article no:** 4861  
**Dimensions:**  
 Eyewash plan h: 29 x w: 22,8 cm  
 Eyewash box h: 28 x w: 23 x d: 11 cm



## PLUM COMBI-BOX DUO MAXI

Dust-proof eyewash box with 500 ml Plum Eyewash pH Neutral 4.9% Phosphate DUO and 1000 ml Plum Eyewash 0.9% Sodium Chloride DUO. Particularly suitable for places with a risk of getting both foreign bodies and acids and alkali in the eyes and where there is a risk that both eyes will be affected.

**Packaging:** 1  
**Article no:** 4810  
**Refill 500 ml eyewash, article no:** 4801  
**Refill 1000 ml eyewash, article no:** 4800  
**Dimensions:**  
 Eyewash plan h: 29 x w: 22,8 cm  
 Eyewash box h: 35,7 x w: 25,2 x d: 11,6 cm

The soft close system makes it easy to open and close the eyewash box and protects it from dust and dirt from the surroundings

Easy to mount close to the working station

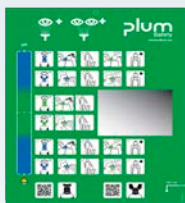
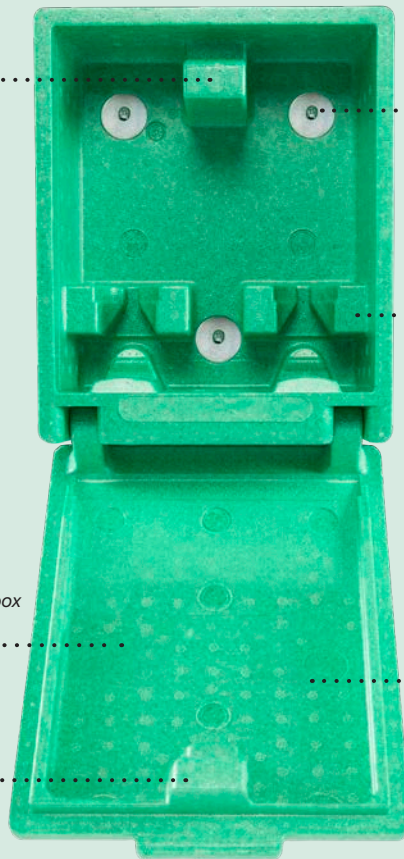
The moulded holders fit all our eyewash bottles - both with regular and DUO eyecups - and keep them securely stored



Made of polystyrene - a light, isolating and environmentally friendly material. It is produced with less plastic compared to a 100% plastic construction.

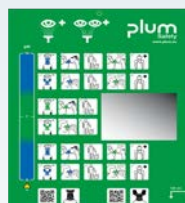
When replaced the eyewash box is suitable for burning

Appointed "Worldstar Winner" for being an innovative product because the packaging is an integrated and permanent part of the product



### PLUM EYEWASH BOX DUO MAXI

Dust-proof eyewash box with 2 x 1000 ml Plum Eyewash 0.9% Sodium Chloride DUO. Particularly suitable for places where prolonged rinsing may be required.



### PLUM EYEWASH PLUG & HEAT BOX, SMALL

Dust-proof eyewash box with a heating element. Ensures the eyewash liquid has a comfortable shower temperature. Suitable for 2 bottles of 200 ml and/or 500 ml eyewash. *Delivered empty.*

### ENSURE THE RIGHT TEMPERATURE

Whatever the reason, most often quick help is needed when you get something in the eye. Therefore, preparedness must be in place and be easily accessible at the workplace – also under cold weather conditions.

**Packaging:** 1  
**Article no:** 4816  
**Refill 1000 ml eyewash, article no:** 4800  
**Dimensions:**  
 Eyewash plan h: 29 x w: 22,8 cm  
 Eyewash box h: 35,7 x w: 25,2 x d: 11,6 cm

**Packaging:** 1  
**Article no:** 4672  
**Dimensions:**  
 Eyewash plan h: 29 x w: 22,8 cm  
 Eyewash box h: 28 x w: 23 x d: 11 cm

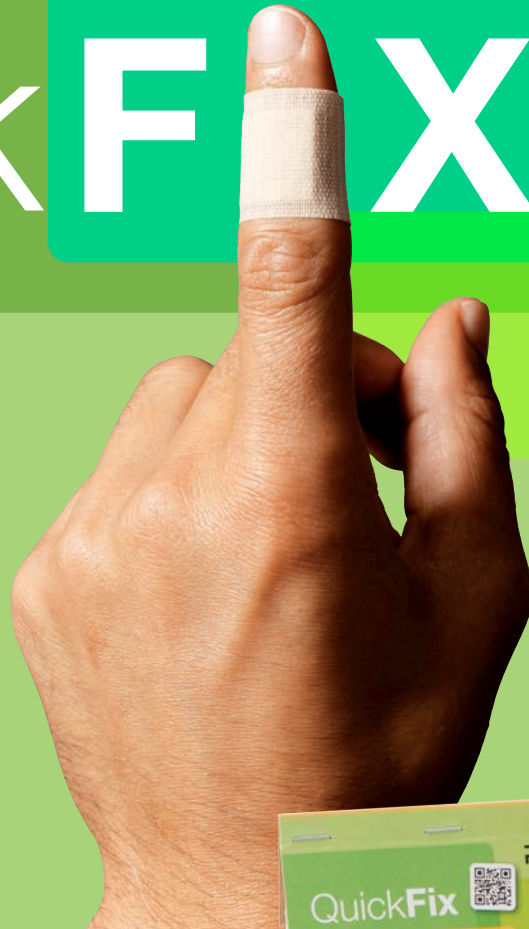


# plum QuickFix



## PLUM QUICKFIX IS A UNIQUE DISPENSER:

- Immediate and visible access to plasters and eyewash ampoules
- Each plaster is ready for use with a pull from the dispenser
- Each plaster is packed separately
- Only one hand is needed to apply
- Easily refilled as required
- Easy to see when it is empty
- Quickly stops minor bleeding without staining the other plasters
- Small dimensions - easy to find room for the Plum QuickFix dispenser
- Includes a shelf for storing small, relevant objects
- Can be locked so that it can only be opened with a key



## Your quick help for minor everyday accidents

Mount the plaster dispenser on the wall and save time. Put on the plaster - and back to work!

### QUICK AND HYGIENIC HELP WITH MINOR INJURIES

Stop wasting time on minor injuries. Grab a plaster from the dispenser, put it on, and go back to work! Plum QuickFix solves the problem easily, hygienically and effectively.

Lots of minor accidents happen every day at work where a plaster is all that is needed. Choose the right plaster for your work situation. A suitable solution is available whether you need plasters for common work situations, for workplaces with a lot of humidity or for work within the food sector.



Grab the plaster from the dispenser. It is ready for use.....



... and can be applied using one hand



How to use Plum QuickFix



# Flexible system for all types of work

Plum QuickFix provides a structured approach to first aid of minor injuries

## CHOOSE THE DISPENSER THAT BEST SUITS YOUR NEEDS

Our range of Plum QuickFix plaster dispensers contain two types of dispensers in different designs. They are developed for different types of workplaces and they can be filled with plasters and ampoules of eyewash in a variety of mixes to meet the needs of every work situation.



### PLUM QUICKFIX DISPENSER

The classic green dispenser contains two refills of Plum QuickFix plasters and/or Plum Eyewash 0.9% Sodium Chloride QuickRinse ampoules. The green cap protects the content of the dispenser from dust and dirt from the workplace. It is designed with an inside shelf for smaller objects and it can be secured with lock and key.

The dispenser can be used in any location with risk of injuries and scratches. The dispenser is designed for mounting on any stationary workplace.

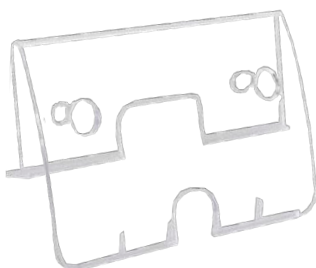
Dimensions: h: 135 x w: 230 x d: 32 mm



Plum QuickFix Uno, white



Plum QuickFix Uno, transparent



Plum QuickFix SOLO®, transparent

### PLUM QUICKFIX UNO AND PLUM QUICKFIX SOLO® DISPENSER

For workplaces that are not challenged with dust and dirt, we have developed the Plum QuickFix UNO and Plum QuickFix Solo® plaster dispenser. It is a small and modern dispenser in a unique design that combines workplace safety with modern style.

Plum QuickFix Uno:

Dimensions: h: 85 x w: 130 x d: 35 mm

Plum QuickFix Solo®:

Dimensions: h: 80 x w: 130 x d: 27 mm



# Choose your Plum QuickFix plaster dispenser

- to meet your specific needs



**PLUM QUICKFIX WATER RESISTANT**  
Dispenser with 90 water resistant plasters suitable for environments with a high level of humidity.

**Packaging:** 10  
**Article no:** 5501  
**Refill article no:** 5511



**PLUM QUICKFIX ELASTIC & WATER RESISTANT**  
Dispenser with 45 elastic plasters and 45 water resistant plasters.

**Packaging:** 10  
**Article no:** 5507  
**Refill article no:** 5512 & 5511



**PLUM QUICKFIX ELASTIC**  
Dispenser with 90 elastic plasters that adjust to the movement of the skin.

**Packaging:** 10  
**Article no:** 5502  
**Refill article no:** 5512



**PLUM QUICKFIX ELASTIC LONG**  
Dispenser with 60 long elastic plasters that can be wrapped around the finger several times.

**Packaging:** 10  
**Article no:** 5528  
**Refill article no:** 5508



**PLUM QUICKFIX DETECTABLE**  
Dispenser with 90 blue plasters with built-in metal surface which can be traced by a metal detector.

**Packaging:** 10  
**Article no:** 5503  
**Refill article no:** 5513



**PLUM QUICKFIX DETECTABLE LONG**  
Dispenser with 60 long blue plasters with built-in metal surface which can be traced by a metal detector.

**Packaging:** 10  
**Article no:** 5529  
**Refill article no:** 5509



**PLUM QUICKFIX ALOE VERA**  
Dispenser with 90 aloe vera plasters, which soothes and moisturizes.

**Packaging:** 10  
**Article no:** 5506  
**Refill article no:** 5514



**PLUM QUICKFIX&RINSE**  
Dispenser with 45 elastic plasters and 5 ampoules with 20 ml 0.9% sterile sodium chloride.

**Packaging:** 10  
**Article no:** 4631  
**Refill article no:** 5512 & 5160



**PLUM QUICKFIX BLOOD STOPPER**  
Dispenser with 90 plasters with hemostatic effect.

**Packaging:** 10  
**Article no:** 5510  
**Refill article no:** 5516



**PLUM QUICKRINSE**  
Dispenser with 10 eyewash ampoules with 20 ml 0.9% sterile sodium chloride.

**Packaging:** 10  
**Article no:** 4632  
**Refill article no:** 5160



**PLUM QUICKFIX EMPTY DISPENSER**  
Dispenser without refills. Fill with any Plum QuickFix or Plum QuickRinse refills of your choice.

**Packaging:** 10  
**Article no:** 5500





**PLUM QUICKFIX UNO ELASTIC - DISPENSER, TRANSPARENT**

Transparent dispenser with 45 elastic and comfortable plasters that adjust to the movement of the skin. The plasters are skin-friendly and allow the skin to breathe.

**Packaging:** 10  
**Article no:** 5531

**PLUM QUICKFIX UNO ELASTIC - DISPENSER, WHITE**

Glossy white dispenser with 45 elastic and comfortable plasters that adjust to the movement of the skin. The plasters are skin-friendly and allow the skin to breathe.

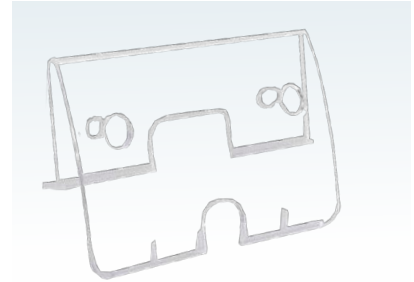
**Packaging:** 10  
**Article no:** 5532



**PLUM QUICKFIX UNO - DISPENSER WITHOUT REFILLS, WHITE**



**PLUM QUICKFIX UNO - DISPENSER WITHOUT REFILLS, TRANSPARENT**



**PLUM QUICKFIX SOLO® - DISPENSER WITHOUT REFILLS, TRANSPARENT**

Fill the dispenser with the plaster of your own choosing. All the QuickFix plaster refills can be used according to your specific needs. The dispenser can also be used with a Plum QuickRinse refill.

**Packaging:** 10  
**Article no:** 5534

**Packaging:** 10  
**Article no:** 5533

**Packaging:** 2  
**Article no:** 5535



**PLUM QUICKFIX MINI**

Small and practical pack with 30 Plum QuickFix Elastic plasters. Easy to carry along anywhere you may need a plaster. Each plaster is packed separately and is ready for use just by pulling it from the pack.

**Packaging:** 30 x 30  
**Article no:** 5504  
**Plaster dimensions:** l: 72 x w: 25 mm



**PLUM QUICKFIX SOLO®**  
Transparent - shown with example of plaster refill

# Plum QuickFix plaster refills

Full overview of refill solutions



## PLUM QUICKFIX ELASTIC

45 elastic and comfortable textile plasters that adjust to the movements of the skin. The plasters are skin-friendly and allow the skin to breathe.

### REFILL

**Display carton:** 6 x 45  
**Packaging:** 8 x 6 x 45  
**Article no:** 5512  
**Dimensions:** l: 72 x w: 25 mm

### DISPENSER

**Article no:** 5502



## PLUM QUICKFIX DETECTABLE

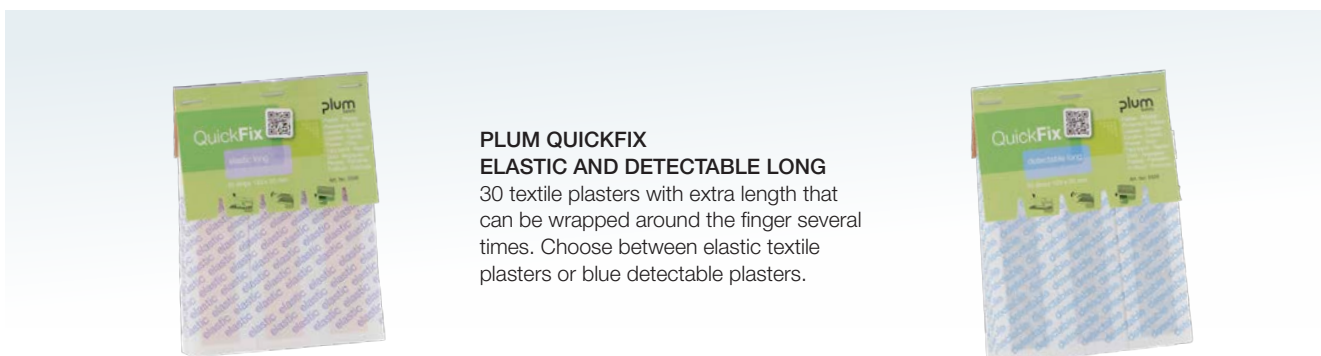
45 blue conspicuous textile plasters with a built-in metal foil that can be traced by a metal detector. Particularly suitable for the food industry. The plasters are made from a breathable material.

### REFILL

**Display carton:** 6 x 45  
**Packaging:** 8 x 6 x 45  
**Article no:** 5513  
**Dimensions:** l: 72 x w: 25 mm

### DISPENSER

**Article no:** 5503



## PLUM QUICKFIX

### ELASTIC AND DETECTABLE LONG

30 textile plasters with extra length that can be wrapped around the finger several times. Choose between elastic textile plasters or blue detectable plasters.



## PLUM QUICKFIX ELASTIC LONG

**Display carton:** 6 x 30  
**Packaging:** 8 x 6 x 30  
**Article no:** 5508  
**Dimensions:** l: 120 x w: 20 mm

### DISPENSER

**Article no:** 5528

## PLUM QUICKFIX DETECTABLE LONG

**Display carton:** 6 x 30  
**Packaging:** 8 x 6 x 30  
**Article no:** 5509  
**Dimensions:** l: 120 x w: 20 mm

### DISPENSER

**Article no:** 5529



**PLUM QUICKFIX ALOE VERA**

The aloe vera contained in the pad has well known soothing, moisturizing and calming properties. It creates the best conditions for the wound environment helping the natural healing process. Prevents the formation of scabs. The material of the plaster is textile.

**REFILL**

**Display carton:** 6 x 45  
**Packaging:** 8 x 6 x 45  
**Article no:** 5514  
**Dimensions:** l: 72 x w: 25 mm

**DISPENSER**

**Article no:** 5506



**PLUM QUICKFIX WATER RESISTANT**

Water resistant plasters that are particularly suitable for working environments with a high level of humidity. The plasters are made from a protective PE material.

**REFILL**

**Display carton:** 6 x 45  
**Packaging:** 8 x 6 x 45  
**Article no:** 5511  
**Dimensions:** l: 72 x w: 25 mm

**DISPENSER**

**Article no:** 5501



**PLUM QUICKFIX BLOOD STOPPER**

Textile plasters with hemostatic effect. The presence of alginate fibres between the nonwoven fibres of the wound pad creates an artificial clot (gel) inside the pad, which blocks the bleeding in 1-2 minutes and maintains optimal moist conditions.

**REFILL**

**Display carton:** 6 x 45  
**Packaging:** 8 x 6 x 45  
**Article no:** 5516  
**Dimensions:** l: 72 x w: 25 mm

**DISPENSER**

**Article no:** 5510



**PLUM EYEWASH 0.9% SODIUM CHLORIDE QUICKRINSE - 5 X 20 ML**

5 eyewash ampoules with 20 ml 0.9% sterile sodium chloride. For use individually or for refilling Plum QuickSafe®, Plum QuickFix&Rinse and Plum QuickRinse dispensers.

**Content:** 5 x 20 ml  
**Packaging:** 4 x 5 x 20 ml  
**Article no:** 5160





# Plum QuickSoft Cohesive Bandage



## PRODUCT FACTS & BENEFITS

- Placed in a green dispenser that is easily refilled
- Latex-free
- Tear-off - no need for scissors
- Self-adhesive - easy to apply

## Protect fingers and other joints

The Plum QuickSoft Cohesive Bandage is the go-to choice for anyone looking for an efficient, user-friendly, and latex-free solution to protect fingers and other joints. Its combination of features, from the tear-off design to the self-adhesive nature, ensures that it's a valuable addition to any first aid kit, providing reliable support when you need it most.

## BANDAGE AVAILABLE IN 3 COLOURS



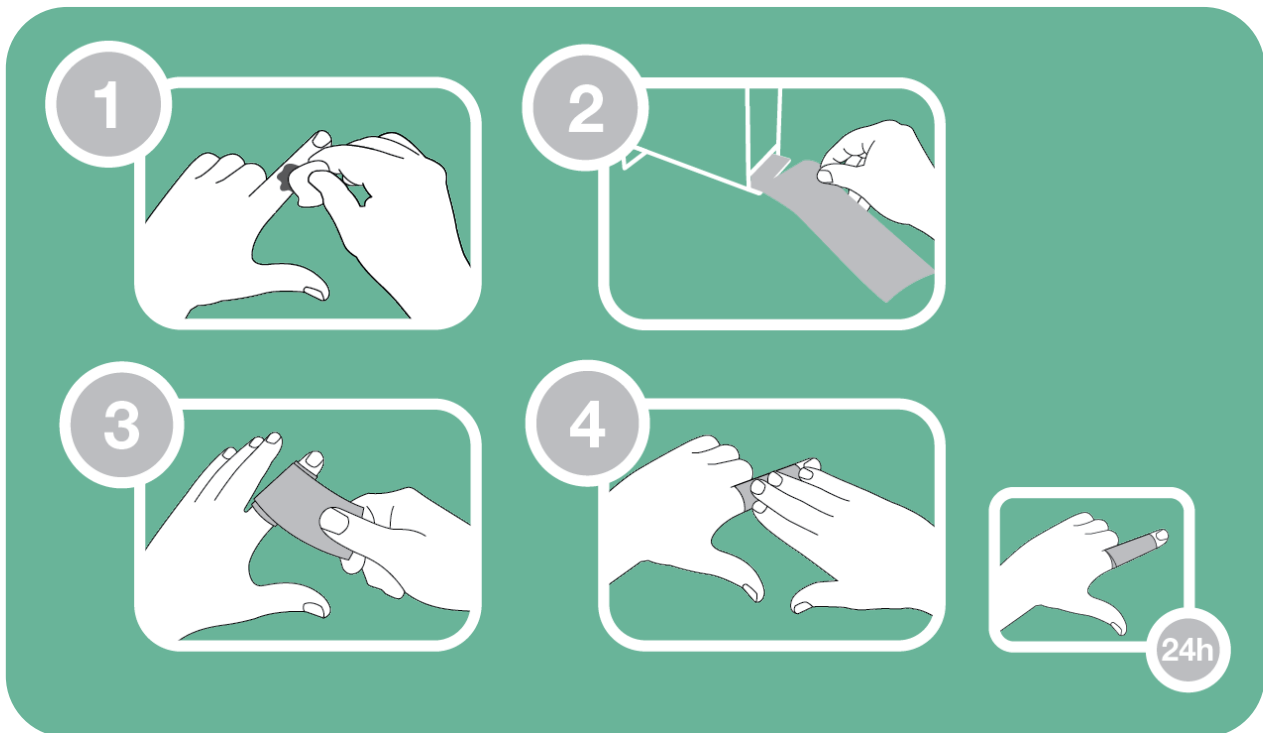
Blue



Beige



Black



### Dimensions

Dispenser	Bandage roll
h: 17 x w: 5.9 x d: 12.9 cm	l: 5 m x w: 5.5 cm

### Plum QuickSoft Cohesive Bandage dispenser with refill

Art. no.	5554	5555	5556	5557
Description	Dispenser, empty	Dispenser + 1 blue bandage refill	Dispenser + 1 beige bandage refill	Dispenser + 1 black bandage refill

### Plum QuickSoft Cohesive Bandage bandage refills only

Art. no.	5541	5542	5543
Description	2 x blue bandage refills	2 x beige bandage refills	2 x black bandage refills

# Plum QuickSafe® gives you quick, easy and safe first aid

A flexible solution that gives a quick overview of the available first aid - and makes it easy to always have the right products in the right place

## CUSTOMIZED FIRST AID STATIONS

Fill your first aid station according to your needs. Plum Eyewash 0.9% Sodium Chloride for rinsing foreign bodies from the eye, and Plum Eyewash pH Neutral 4.9% Phosphate for accidents with acids or alkali. Plasters that are suitable for your work situation. Burn gel that soothes minor burns. Eyewash ampoules for minor accidents and irritated eyes. Wipes for cleansing wounds. Compress dressings for more serious accidents.

All of it behind a transparent cover that will give you a perfect overview of what you need.

## ” GET THE MOST IMPORTANT ITEMS IN THE RIGHT PLACE

Spæncom A/S is a leading supplier of concrete elements. The company has chosen Plum QuickSafe® in order to increase safety for their more than 500 employees. “We have chosen Plum QuickSafe®, because the station can be organized to suit the individual work area. In the areas where concrete elements are acid-washed, we can, for example, place the eyewash bottles close to the work situation. Plum QuickSafe® contains the most necessary items, it can be placed so that first aid is close at hand, and it is very practical with the transparent cover.”

Jany Johannsen,  
Environment and Safety Coordinator







# Help is at hand

Easy access to first aid is the key to increased safety

Plum QuickSafe® combines the most important first aid products in one place. Place the station where the risk of accidents is greatest. The Plum QuickSafe® station is not much bigger than an A3 sheet of paper, so it can be placed in almost any workplace at risk.

The transparent cover allows both a quick overview and easy access to first aid. You can easily see when the station needs to be refilled. The dust-proof cover together with the separately packed products make Plum QuickSafe® a hygienic and elegant solution.



# Plum QuickSafe® Solo



500 ml  
Plum Eyewash  
0.9% Sodium  
Chloride

Plum  
QuickFix



## First aid made simple

Plum QuickSafe® Solo – a compact, user-friendly first aid station with eyewash and plaster refill for quick and easy assistance.

Prominent visibility, dust-proof hygiene, and customizable content make it a must-have for any workplace.

Plum QuickSafe® Solo - a great choice for first aid.

### PRODUCT FACTS & BENEFITS

- First aid station for 1 bottle of eyewash and 1 plaster refill
- Makes first aid visible and easily accessible
- Dust-proof and hygienic first-aid cabinet
- Flexible solution with customised product content
- Streamlined and space-efficient design
- Easy to refill

### Refills for Plum QuickSafe® Solo

	Art. no.	Description
Eyewash	4691	200 ml Plum Eyewash 0.9% Sodium Chloride
	4604	500 ml Plum Eyewash 0.9% Sodium Chloride
	4861	500 ml Plum Eyewash 0.9% Sodium Chloride DUO
Plaster	5508	Plum QuickFix Elastic Long
	5509	Plum QuickFix Detectable Long
	5511	Plum QuickFix Water Resistant
	5512	Plum QuickFix Elastic
	5513	Plum QuickFix Detectable
	5514	Plum QuickFix Aloe Vera
	5516	Plum QuickFix Blood Stopper

### Plum QuickSafe® Solo station

Art. no.	5191
Description	Empty station
Dimensions	h: 37 x w: 14 x d: 9.5 cm

### Plum QuickSafe® Solo station with content

Art. no.	5192
Eyewash	500 ml Plum Eyewash 0.9% Sodium Chloride (Refill no. 4604)
Plaster	Plum QuickFix Elastic (Refill no. 5512)

# Plum QuickSafe®



## Plum QuickSafe® EMPTY

### YOU MAKE THE DECISIONS

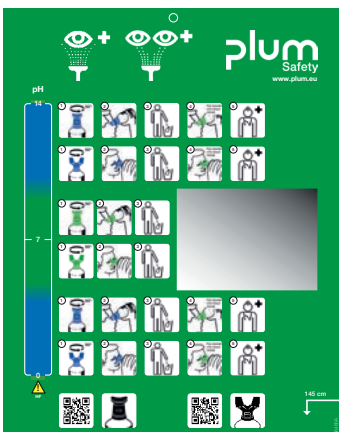
If you want full freedom to organize your first aid according to your requirements, you can start with an empty station and fill it to suit your specific situation.



### BUY AN EMPTY STATION AND FILL IT TO MEET YOUR NEEDS

If you have requirements that we do not meet with the 4 different Plum QuickSafe® solutions presented on the following page, you can get a 100% customized solution. Start with a wall station and fill it with eyewash bottles and other first aid products.

The eyewash plan is included in all Plum QuickSafe® stations



**Packaging:** 1  
**Article no:** 5173  
**Dimensions:** h: 430 x w: 253 x d: 92 mm





## Plum QuickSafe® BASIC

### A GOOD STARTING POINT

With a Plum QuickSafe® Basic you get the most essential products and can choose the contents for the top shelves. It gives you full flexibility.



### DO YOU HAVE SPECIAL REQUIREMENTS REGARDING YOUR FIRST AID STATION?

The backbone of the entire Plum QuickSafe® series is Plum's acclaimed eyewash. With Plum QuickSafe® Basic you will get it in a combination with Plum Eyewash pH Neutral 4.9% Phosphate, Plum Eyewash 0.9% Sodium Chloride, eyewash ampoules and plasters. The rest is up to you. Organize the shelf in the station to suit your company's requirements.

CONTENTS:	Article no:
2 x 500 ml Plum Eyewash 0.9% Sodium Chloride	4604
1 x 200 ml Plum Eyewash pH Neutral 4.9% Phosphate	4752
5 x 20 ml Plum Eyewash 0.9% Sodium Chloride QuickRinse ampoules	5160
1 x Plum QuickFix Elastic refill with 45 plasters	5512

<b>Packaging:</b>	1
<b>Article no:</b>	5170
<b>Dimensions:</b>	h: 430 x w: 253 x d: 92 mm



## Plum QuickSafe® COMPLETE

### THE COMPLETE SOLUTION

Eyewash including Plum Eyewash pH Neutral 4.9% Phosphate and Plum Eyewash 0.9% Sodium Chloride QuickRinse ampoules, pressure dressing, wound cleansing wipes, plasters and burn gel to soothe minor burns.



### WIDE FIRST AID COVER

With Plum QuickSafe® Complete you will get a wide range of first aid products. There are products for most critical situations and for many of the everyday minor accidents.

CONTENTS:	Article no:
18 x Plum QuickCool burn gel	5150
1 x Plum QuickStop wound compress dressing 1 x 17 x 17 cm and 2 x 12 x 7.5 cm	5152
20 x Plum QuickClean wound cleanser	5151
2 x 500 ml Plum Eyewash 0.9% Sodium Chloride	4604
1 x 200 ml Plum Eyewash pH Neutral 4.9% Phosphate	4752
5 x 20 ml Plum Eyewash 0.9% Sodium Chloride QuickRinse ampoules	5160
1 x Plum QuickFix Elastic refill with 45 plasters	5512

<b>Packaging:</b>	1
<b>Article no:</b>	5174
<b>Dimensions:</b>	h: 430 x w: 253 x d: 92 mm



## Plum QuickSafe® FOOD INDUSTRY

### FOR THE SAFETY OF YOU AND YOUR CUSTOMERS

We have filled a station with the relevant content to suit the requirements of the food industry.



### QUICK AND SAFE HELP WITH BUILT-IN TRACEABILITY

A first aid station targeting the food industry, kitchens, canteens and restaurants with, among other things, traceable plasters, wound cleansing, burn gel and wound compress dressings.

CONTENTS:	Article no:
18 x Plum QuickCool burn gel	5150
1 x Plum QuickStop wound pressure dressing 1 x 17 x 17 cm and 2 x 12 x 7.5 cm	5152
20 x Plum QuickClean wound cleanser	5151
2 x 500 ml Plum Eyewash 0.9% Sodium Chloride	4604
1 x 200 ml Plum Eyewash pH Neutral 4.9% Phosphate	4752
1 x Plum QuickFix Detectable refill with 45 plasters	5513
1 x Plum QuickFix Detectable Long refill with 30 plasters	5509

<b>Packaging:</b>	1
<b>Article no:</b>	5175
<b>Dimensions:</b>	h: 430 x w: 253 x d: 92 mm



## Plum QuickSafe® CHEMICAL INDUSTRY

### STRONG SOLUTION FOR TOUGH ENVIRONMENTS

Accidents with acids and alkali can have serious and life-long consequences for the individual if you compromise on accessibility.



### WHEN ONLY SECONDS STAND BETWEEN A MINOR AND A MAJOR ACCIDENT

If there is a risk of accidents involving acids and alkali, safety in the form of effective and mobile eyewash is crucial. It contains, among other things, Plum Eyewash pH Neutral 4.9% Phosphate DUO that will rinse both eyes at the same time.

CONTENTS:	Article no:
1 x 500 ml Plum Eyewash 0.9% Sodium Chloride DUO	4861
1 x 500 ml Plum Eyewash pH Neutral 4.9% Phosphate DUO	4801
1 x 200 ml Plum Eyewash pH Neutral 4.9% Phosphate	4752
5 x 20 ml Plum Eyewash 0.9% Sodium Chloride QuickRinse ampoules	5160
1 x Plum QuickFix Elastic refill with 45 plasters	5512

<b>Packaging:</b>	1
<b>Article no:</b>	5171
<b>Dimensions:</b>	h: 430 x w: 253 x d: 92 mm

# Plum Pull1Aid®

Quick, easy and safe first aid

Plum Pull1Aid® is a wall mounted first aid station that fits most workplaces. A flexible solution that gives a quick overview of the available first aid - and makes it easy to always have the right products in the right place.

Plum Pull1Aid® allows you to combine first aid and wound care products that suit the needs at your workplace.



## Plum Pull1Aid® Station



### CONTENTS:

1 x Plum QuickCool burn gel	5150
1 x Plum QuickClean wound cleanser	5151
1 x Plum QuickStop wound dressing	5152
2 x Plum Blood Stopper wound dressing	5154
1 x Plum Blood Stopper Mini wound dressing	5153
1 x Plum BurnGel dressing for burns	5156
1 x Plum Protect Kit respiratory aid	5155
1 x Plum QuickFix Elastic refill	5512
1 x Plum Eyewash 0.9% Sodium Chloride QuickRinse	5160

### ART. NO.:

**Packaging:**

1

**Article no:**

5183

**Dimensions:**

h: 430 x w: 253 x d: 92 mm



# Plum Pull1Aid® Refills

## PLUM BLOOD STOPPER MINI

A smaller, sterile compress dressing with four functions. Use as pressure pad for heavy bleeding, protection for superficial wounds, burn dressing with wound-protecting surface or as temporary support.



Art. no. 5153

## PLUM BLOOD STOPPER

A sterile compress dressing with four functions. Use as pressure pad for heavy bleeding, protection for superficial wounds, burn dressing with wound-protecting surface or as temporary support.



Art. no. 5154

## PLUM PROTECT KIT

Protecting aid for mouth-to-mouth resuscitation situations. Limits contact between the first aid provider and the person on harm by a breathing mask is with a one-way-valve.



Art. no. 5155

## PLUM BURN GEL

Gel dressing that rapidly cools and effectively relief pain for burns. The cooling effect reduces pain and swelling and prevents the burn from going deeper into the skin.



Art. no. 5156

## PLUM QUICKCOOL

Burn gel for first aid in case of minor burns and scalding. Cooling and pain-relieving effect. Contains tea tree oil. Can be used individually and for refilling the first aid stations.



Art. no. 5150

## PLUM QUICKCLEAN

Wound cleansing wipes for cleaning minor wounds and cuts. Each wipe is packed separately and contains sterile water. Can be used individually and for refilling first aid stations.



Art. no. 5151

## PLUM QUICKSTOP

Wound compress dressing set for minor as well as major bleeding. Sterile dressing with integrated compression. Elastic, non-adhesive and skin-friendly. For general use as pressure, support and protection dressing.



Art. no. 5152

## PLUM QUICKFIX BLOOD STOPPER

Plaster with hemostatic effect with alginate fibres between the nonwoven fibres of the wound pad. Creates artificial clot inside the pad, which blocks bleeding in 1-2 minutes and maintains optimal moist conditions.



Art. no. 5516

## PLUM QUICKFIX ELASTIC

Elastic and comfortable textile plasters that adjust to the movements of the skin. The plasters are skin-friendly and allow the skin to breathe.



Art. no. 5512  
Art. no. long 5508

## PLUM QUICKFIX DETECTABLE

Blue conspicuous plasters with a built-in metal foil that can be traced by a metal detector. Made from a breathable material.



Art. no. 5513  
Art. no. long 5509

## PLUM QUICKFIX WATER RESISTANT

Water resistant plasters that are suitable for working environments with a high level of humidity. The plasters are made from a protective PE material.



Art. no. 5511

## PLUM QUICKFIX ALOE VERA

Aloe vera contained plasters with soothing, moisturizing and calming effect. Creates the best conditions for natural wound healing and prevents the formation of scabs.



Art. no. 5514

## PLUM EYEWASH 0.9% SODIUM CHLORIDE QUICKRINSE

5 eyewash ampoules with 20 ml 0.9% sterile sodium chloride. For use individually or for refilling Plum Pull1Aid®, Plum QuickSafe®, Plum QuickFix&Rinse and Plum QuickRinse dispensers.



Art. no. 5160

## PLUM PULL1AID - EMPTY STATION

Practical and functional station with clear cover - hygienic and protects the products from dust.



Art. no. 5182

# Wound and eye care

Practical solutions –  
to stop small accidents before they stop you



Even small cuts and wounds can get serious if not tended to in time. With the right wound and eye care at your disposal, you can easily cleanse and dress a small wound - and quickly get back to work.



## PLUM 1AID BAG - BASIC

Practical first aid bag for your belt and workwear or any workplace requiring a portable solution for first aid. Easy to open and provides quick and hygienic first aid on the go.

### BAG INCLUDES:

- 1 x Plum QuickFix Water Resistant refill
- 1 x Plum QuickFix Elastic refill
- 1 x 200 ml Plum Eyewash 0.9% Sodium Chloride
- 1 x Plum QuickCool
- 1 x Plum QuickClean
- 1 x Plum QuickStop

**Packaging:** 4  
**Article no:** 4960



## PLUM 1AID BAG - INDUSTRIAL

Practical first aid bag for your belt and workwear or any workplace requiring a portable solution for first aid. Easy to open and provides quick and hygienic first aid on the go.

### BAG INCLUDES:

- 2 x Plum QuickFix Elastic refill
- 1 x 200 ml Plum Eyewash pH Neutral 4.9% Phosphate
- 1 x 50 ml Plum Wound and Eyewash Spray
- 1 x Plum QuickCool
- 1 x Plum QuickClean
- 1 x Plum QuickStop

**Packaging:** 4  
**Article no:** 4961



## PLUM BELT BAG FOR 200 ML BOTTLES

Carry your eyewash in this practical bag for your belt, work clothes, etc.

The bag is easy to open and provides quick first aid in case of accidents. A safe and hygienic way to store and protect the bottle. Bottle is not included.

**Packaging:** 10 units  
**Article no:** 4692



**50 ML / 250 ML**

**PLUM WOUND AND EYEWASH SPRAY**

A 0.9% sodium chloride solution that gives immediate care to minor eye accidents or cuts and scrapes on the skin.

**Content:** 50 ml  
**Packaging:** 24 x 50 ml  
**Article no:** 45530  
**Languages:** en, de, se, da, fr, no, fi, pt, it, nl, es, pl, is

**Content:** 250 ml  
**Packaging:** 12 x 250 ml  
**Article no:** 4554

Plum Wound and Eyewash Spray is CE marked according to the Guidelines for Classification of Medical Device Directive (MDD 93/42/EEC)



**PLUM NANO SAFE**

For effective removal of nanoscale particles from the skin.

**Content:** 50 ml  
**Article no:** 5576



**PLUM QUICKSTOP**

Wound compress dressing set for effective first aid in the event of minor as well as major bleeding. Sterile dressing with integrated compression. Elastic, non-adhesive and skin-friendly. Plum QuickStop for general use as pressure, support and protection dressing.

**SET INCLUDES:**

1 x Plum QuickStop wound compress dressing, 17 x 17 cm  
 2 x Plum QuickStop wound compress dressings, 12 x 7.5 cm

**Packaging:** 6 x 3  
**Article no:** 5152



**PLUM QUICKCOOL**

Burn gel for first aid in case of minor burns and scalding. Cooling and pain-relieving effect. Contains tea tree oil. Can be used individually and for refilling the Plum QuickSafe® stations. 18 sachets per box.

**Packaging:** 6 x 18  
**Article no:** 5150



**PLUM QUICKCLEAN**

Wound cleansing wipes for cleaning minor wounds and cuts. Each wipe is packed separately and contains sterile water. Can be used individually and for refilling the Plum QuickSafe® stations. 20 sachets per box.

**Packaging:** 6 x 20  
**Article no:** 5151



**PLUM QUICKCLEAN BOX**

Box with 40 wound cleansing wipes for cleaning minor wounds and cuts. Each wipe is packed separately and contains sterile water. Each wipe measures 130 x 200 mm.

**Packaging:** 11 x 40  
**Article no:** 5551  
**Wall bracket:** 955904







# Plum BurnOut

## Fire Suppression Spray

---

Plum BurnOut is a fire suppression spray and a practical supplement to a regular fire extinguisher. The spray bottle is easy to bring along and contains an inorganic, water-based fluid that provides a unique fire protection. Furthermore, it has one of the strongest environmental profiles on the market today.

### PRODUCT FACTS AND BENEFITS

- ✓ Environmentally neutral liquid (pH 7.5)
- ✓ PFAS and surfactant free
- ✓ High EC 50 score (Effect Concentration that measure bacterial content after use - high percent means good, low is bad) Seawater 21% /Lake water 41%
- ✓ Non-toxic
- ✓ Fire class A
- ✓ Good suppression effect
- ✓ Empties in 20 seconds and scope 2 meters

Plum BurnOut is to be used for rapid assistance in early-stage extinguishing, used by fire wardens (industry), security guards, as well as in homes, restaurants, mobile homes and caravans, indeed any place where a small extinguisher can be used first and suppress the fire.

It can be mounted in a wall bracket, and it is suitable for wood, paper, and fabrics.

Plum BurnOut is highly effective, has fantastic re-ignition protection and it is safe to use.



### PLUM BURNOUT

---

Content	250 ml
Packaging	12
Article no.:	5590



### WALL BRACKET

---

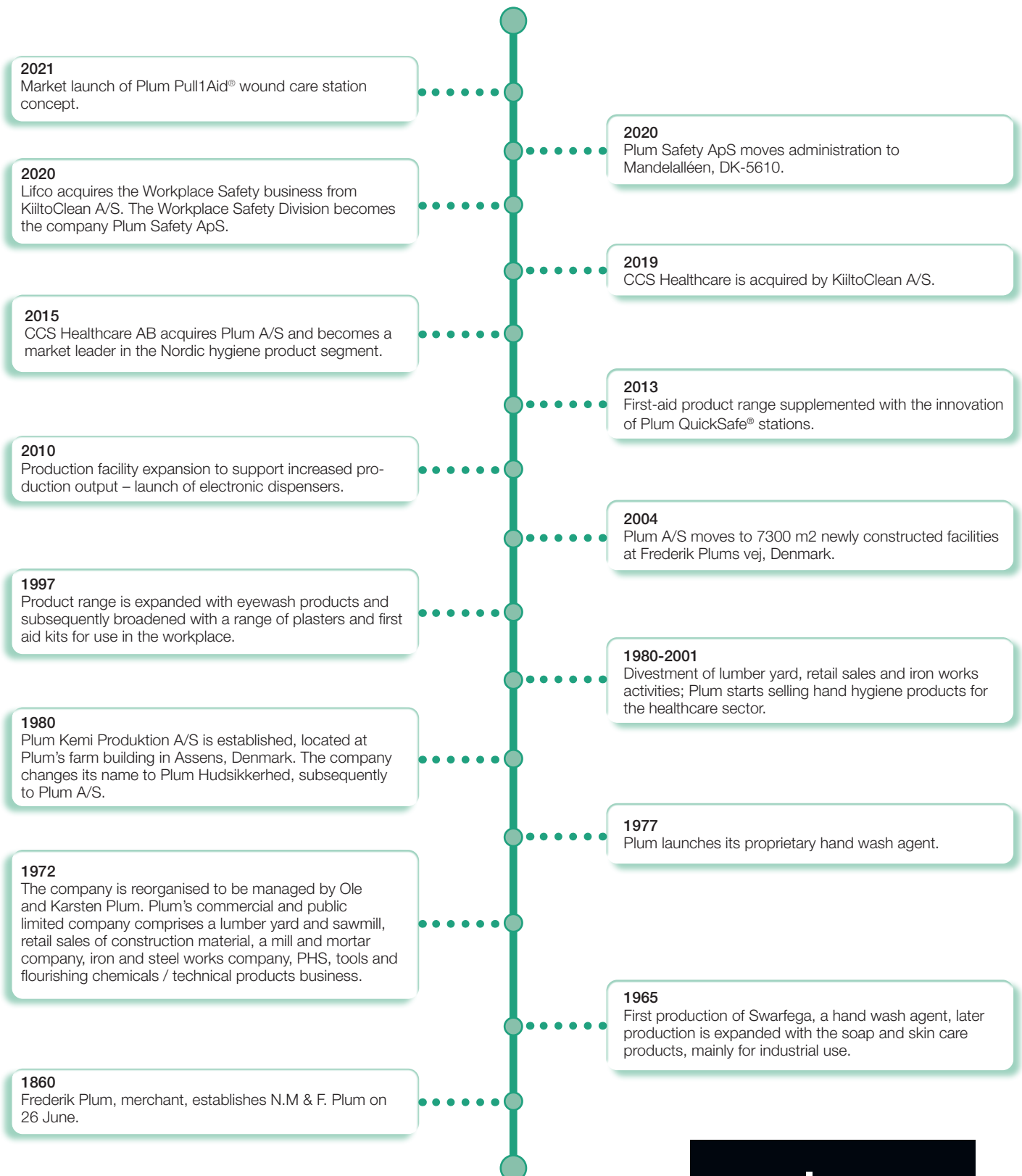
Packaging	24
Art. No.:	4123

# From hand care to eyewash

Plum Safety ApS departs from the Danish company Plum A/S – dating back to 1860

Plum A/S has been providing efficient and user-friendly hand hygiene solutions to corporate clients for more than 50 years – and for more than 20 years we have served the market with first aid solutions that make your workplace a safer place to be.

Today we serve a wide range of users in the industry, handicraft and institutional areas. We offer first aid products such as eyewash, first aid stations, plasters, and burn gel.



**Plum Safety ApS**

Mandelalleen 1  
DK-5610 Assens

T: +45 6916 9600  
info@plum.eu

[www.plum.eu](http://www.plum.eu)

