

MALFINI

*Your success
is our goal*

Branded promotional clothing & workwear

CATALOGUE 2025

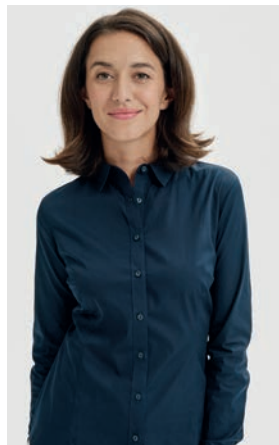




MALFINI PORTFOLIO



RESIST LS ^{R05}	63
RESIST ^{R01, R02}	62
SAILOR ^{R03, R04, R05}	71
SAILOR LS ^{R07}	72
SAILOR TOP ^{R06}	72
SLIM ¹³⁹	79
STAGE ⁸¹²	43
STREET LS ¹³⁰	59
TRIUMPH ¹³⁶	69
VIPER FREE ^{F43, F61}	45
VIPER ^{143, 161}	45
V-NECK ¹⁰²	66



SNAP ⁴¹⁹	115
TRENDY ZIPPER ^{410, 411, 412}	121
TWO IN ONE ⁶⁰⁴	135
VERTEX HOODIE ^{W43}	129
VERTEX ^{W41}	131
VERTEX ^{W42}	127
VIVA ⁴⁰⁹	124
VOYAGE ^{452, 451}	123
ZERO ^{P41}	125



SHIRTS

DYNAMIC ^{262, 263}	105
FLASH ^{260, 261}	109
CHIC ^{207, 214}	109
JOURNEY ^{264, 265}	103
STYLE ²¹⁸	107
STYLE LS ^{209, 229}	107



FLEECE

CASUAL ⁵⁵⁰	145
EFFECT ⁵³⁰	145
EXIT ⁵²⁵	141
FROSTY ^{527, 528, 529}	139
JACKET HI-Q ⁵⁰⁶	143
JACKET ^{501, 504}	143
NEXT ⁵¹⁸	141

SWEATSHIRTS AND SWEATPANTS

ADVENTURE ⁴⁰⁷	124
BALANCE ⁶¹⁰	134
BOMBER ^{453, 454}	123
BREAK ^{840, 841}	119
CAPE ^{413, 414}	117
CAPE FREE ^{F13, F14}	117
COMFY ⁶¹¹	135
DIRECT ^{417, 418}	130
ESSENTIAL ⁴⁰⁶	125
CHILL ⁴²²	113
LEISURE ⁶⁰³	134
MOON ^{420, 421}	115
REST ^{614, 615}	133



MILES ^{612, 613}	170
PIXEL ^{P81}	168
VICTORY ²¹⁷	169



OUTDOOR

BODY WARMER ⁵⁰⁹	163
COOL ^{515, 514}	162
CROSS ^{555, 556}	149
CROSS ^{557, 558}	151
EVEREST ^{552, 551}	155
EVEREST ^{553, 554}	155
NANO ^{531, 532}	160
PACIFIC ^{533, 534}	156
PERFORMANCE ^{522, 521}	159
PHANTOM ^{540, 541}	153
RAINBOW ^{538, 539}	161
VERTEX ^{W55}	157
VISION ^{517, 516}	163
WINDY ⁵²⁴	162



ACTIVE

BREEZE ⁸²⁰	169
DESTINY ^{175, 176}	170
DIRECT ^{417, 418}	171
FANTASY ^{124, 140, 147}	167
CHANCE ^{810, 811}	168



RESIST HEAVY POLO ^{R20, R21}	209
RESIST HEAVY ^{R03, R04}	208
RESIST LS ^{R05}	209
RESIST ^{R01, R02}	208
SHIELD ^{A99}	225
STREET LS ¹³⁰	211
VERTEX HOODIE ^{W43}	203
VERTEX ^{W07}	197
VERTEX ^{W41}	199
VERTEX ^{W42}	201
VERTEX ^{W55}	195
WOODY ^{W02}	205
WOODY ^{W51, W01}	206
WOODY ^{W52, W05}	207

RIMECK

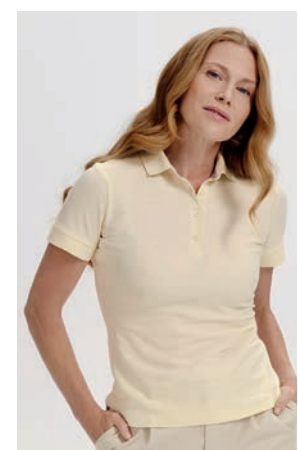
BASE ^{R06}	212
BODY WARMER ⁵⁰⁹	217
CASUAL ⁵⁵⁰	215
COLORMIX ¹⁰⁹	211
EFFECT ⁵³⁰	215
HV BRIGHT ^{9V3}	224
HV DROP ^{5V3}	219
HV DRY ^{1V8}	223
HV ESSENTIAL ^{4V6}	222
HV FLEECE JACKET ^{5V1}	222
HV GUARD 4 IN 1 ^{5V2}	221
HV PROTECT ^{1V9}	223
HV REFLEX ^{3V5}	225
HV RUNWAY ^{2V9}	224
JACKET ^{501, 504}	214
JACKET HI-Q ⁵⁰⁶	214
NEXT ⁵¹⁸	217
RECALL ^{R07}	212
RESERVE ^{R22, R23}	213

ACCESSORIES

5P ³⁰⁷	177
5P RAP ³⁰¹	175
6P ³⁰⁵	177
6P KIDS ³⁰³	179
6P SANDWICH ³⁰⁶	179
BAMBOO BATH TOWEL ⁹⁵²	189
BAMBOO TOWEL ⁹⁵¹	189
BEANIE ³¹⁵	175
CARRY ⁹⁰¹	183
CLASSIC ³⁰⁴	181
EASYGO ⁹²²	185
ENERGY ⁹¹²	185
HANDY ⁹⁰⁰	184
ORGANIC TOWEL ^{916, 917, 918}	186
SHOPPER ⁹²¹	183
SUNSHINE ^{P31}	178
TOWEL ^{450, 903, 905}	187
TWISTER ³²⁸	181

T-SHIRTS

ACTION ^{150, 152}	65
ACTION V-NECK ^{700, 701}	65
BASE ^{R06}	212
BASIC ^{129, 134, 138}	35
BASIC FREE ^{F29, F34, F38}	39
BASIC RECYCLED ⁸²⁹	41
BRAVE ^{155, 156}	79
CAMO PURE ^{C22}	73
CAMOUFLAGE ^{144, 149}	73
CITY ¹²⁰	49
CLASSIC ^{101, 100}	57
CLASSIC NEW ^{132, 133, 135}	56
COLORMIX ¹⁰⁹	59
CORE ¹⁴²	69
DREAM ¹²⁸	67
ELEGANCE ¹²⁷	77
ELEMENT ¹⁴⁵	61
EXCLUSIVE ^{153, 154}	55
FIT V-NECK ^{146, 162}	67
FIT-LS ^{119, 169, 121}	76
FREEDOM ¹⁷⁸	51
GLANCE ¹⁴¹	48
HEAVY NEW ¹³⁷	60
HEAVY NEW FREE ^{F37}	60
HEAVY V-NECK ¹¹¹	66
HEAVY ¹¹⁰	61
LOVE ¹²³	49
MERINO RISE LS ^{159, 160}	75
MERINO RISE ^{157, 158}	75
NATIVE ^{173, 174}	53
ORIGIN ^{171, 172}	53
PAINT ^{P73}	46
PARADE ^{P71}	47
PEAK ^{P74}	46
PELICAN ^{P72}	47
PROGRESS LS ^{P75}	77
PURE ¹²²	48
RESIST HEAVY ^{R03, R04}	62

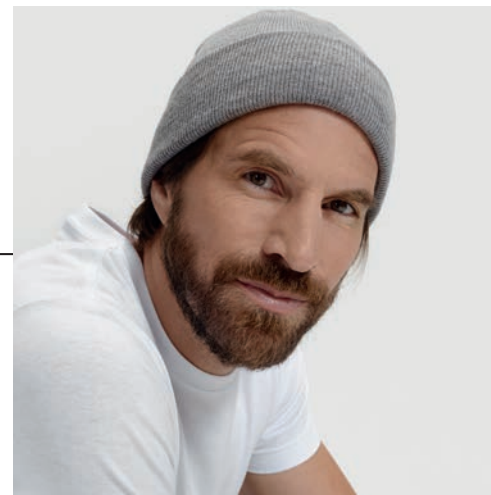


POLO SHIRTS

COLLAR UP ^{256, 257}	95
COTTON ^{212, 213}	98
COTTON HEAVY ^{215, 216}	98
DIAMOND ^{273, 274}	97
DRESS UP ²⁷¹	95
FOCUS ^{232, 233}	89
GRAND ^{259, 269}	93
JOY ^{P21, P22}	89
PERFECTION PLAIN ^{251, 253}	91
PIQUE POLO ^{203, 210, 222}	83
PIQUE POLO FREE ^{F03, F10, F22}	84
PIQUE POLO LS ^{221, 231, 241}	87
PRIME ^{234, 235}	93
RESIST HEAVY POLO ^{R20, R21}	85
SINGLE J. ^{202, 223}	99
SINGLE J. LS ²¹¹	99
URBAN ^{219, 220}	91



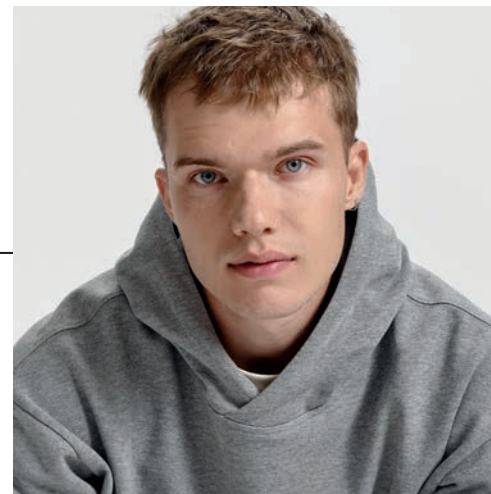
NEW
PRODUCTS



BEANIE 315



175



CHILL 422



113



STAGE 812

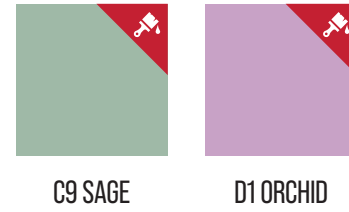


43

NEW COLOURS AND SIZES



New colour in our portfolio



T-SHIRTS	COLOURS	p.
BASIC ^{129, 134, 138}	70 C9 86 D1 D1	35
CITY ¹²⁰	D1	49
CLASSIC NEW ^{132, 133}	08	56
FANTASY ^{124, 140}	09 69	167
FANTASY ^{124, 147}	70 92 64	167
FANTASY ¹⁴⁰	70 92 16 04 64	167
FREEDOM ¹⁷⁸	C9 D1	51
RESIST LS ^{R05}	23 93	63 209
RESIST ^{R02}	23 93 D1	62 208
RESIST ^{R01}	23 93	62 208
HEAVY NEW ¹³⁷	70 90 86	60
PURE ¹²²	C9 D1	48
STAGE ⁸¹²	C9 D1	43
POLO SHIRTS	COLOURS	p.
SINGLE J. ^{202, 223}	70 16 86	99
PIQUE POLO ^{203, 210}	70 86 C9 D1	83
PIQUE POLO ²²²	06 16 86	83
PIQUE POLO LS ^{221, 231}	04	87
SHIRTS		p.
DYNAMIC ^{262, 263}	02	105
STYLE LS ^{209, 229}	02	107

SWEATSHIRTS	COLOURS	p.
ESSENTIAL ⁴⁰⁶	87 16 86	125
TRENDY ZIPPER ^{410, 411}	69	121
TRENDY ZIPPER ⁴¹²	16 69	121
CAPE ^{413, 414}	C9 86	117
CAPE ⁴¹⁴	D1	117
MOON ^{420, 421}	C9 D1	115
NEXT ⁵¹⁸	16 93	141 217
JACKET ^{501, 504}	16 93	143 214
CAPS	COLOURS	p.
6P ³⁰⁵	70 86	177
5P ³⁰⁷	70 86	177
JACKETS	SIZES	p.
ACTION ¹⁵⁰	3XL	65
CROSS ⁵⁵⁵	S	149
CROSS ⁵⁵⁶	XS	149
CROSS ⁵⁵⁷	S	151
CROSS ⁵⁵⁸	XS	151
PERFORMANCE ⁵²¹	XS	159
PERFORMANCE ⁵²²	S	159
RAINBOW ⁵³⁸	S	161
RAINBOW ⁵³⁹	XS	161
PHANTOM ⁵⁴⁰	S	153
PHANTOM ⁵⁴¹	XS	153
VERTEX ^{W42}	S	127 201
VERTEX HOODIE ^{W43}	S	129 203

WE HAVE BEEN HERE FOR YOU FOR A QUARTER OF A CENTURY

Dear customers and trading partners,
It is with great pleasure that I welcome you to the release of our new catalogue. The catalogue represents an annual milestone, in which we try to not only present the individual product lines, but also the values we stand for. To express the fact that textiles are not just a commodity, but a way of expressing one's own personality, a carrier of your brand and even the very message to your customers. For more than 25 years we have been striving to provide you and your customers with textiles that fulfill this mission, expanding our offer with new products every year while increasing the range and level of services.

Thank you for your trust and for being with us this year. We are proud to be a part of your success and look forward to another year of challenges, opportunities and collaboration. I believe that this catalogue will also bring you inspiration and help you find the right products to satisfy your customers in fulfilling their needs.

Sincerely,



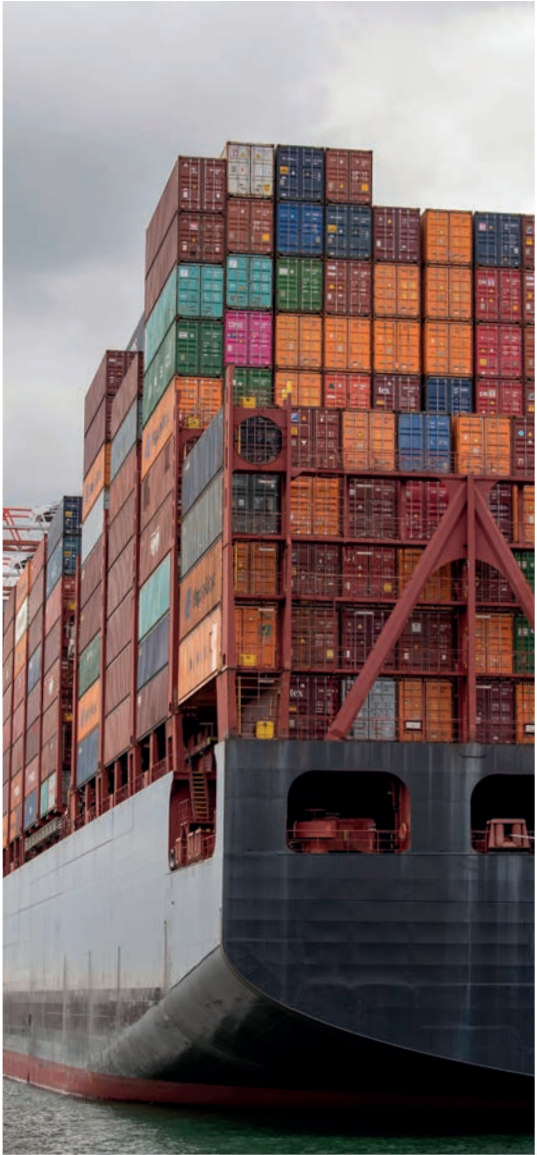
Radek Veselý
Chairman of the Board of Directors



1999

FOUNDING OF THE COMPANY

Two high school classmates, Martin Hausenblas and Pavel Neumann, start their own business. However, in contrast to the original plan of creating an advertising agency, the company becomes a supplier of its own advertising textiles due to increasing demand.



2000

FIRST CONTAINER OF T-SHIRTS

The very next year, the first container arrives from China containing 32,000 T-shirts in four colours (white, black, navy blue and grey) in four sizes. The entire shipment is sold out in two weeks.



2003

MOVING TO NEW PREMISES

The rapidly growing number of employees and products not only requires administrative space, but above all a larger warehouse. The owners therefore buy a building in Ústí nad Labem and adapt it for these purposes.



2005

PRODUCTION EXPANDS FROM CHINA TO BANGLADESH

The growth in sales logically leads to the expansion of production from China to Bangladesh and then to other Asian countries.



2011

LOGISTICS CENTRE OPENS IN OSTRAVA

Increasing stock requirements initiated the opening of a logistics centre in Ostrava-Privoz and, thanks to the company's rapid growth, the first shipments of goods from the ultra-modern logistics centre in Ostrava-Kunčičky commenced in 2015.



2012

COMMENCEMENT OF SALE OF BASIC T-SHIRTS

The company launches sales of its most popular product to date, the BASIC men's T-shirt, which becomes the company's flagship product. The subsequent launch of the luxury advertising textile brand MALFINI (now Malfini Premium) clearly defined the company's path towards ever-increasing quality.



2016

OPENING OF A NEW OFFICE BUILDING IN ÚSTÍ NAD LABEM

Employees move to a new office building in Ústí nad Labem, built to provide maximum energy self-sufficiency. Due to the growing production and development of new products in Asian countries, the company opens an office in Beijing, China.



2020

FROM NOW ON WE ARE MALFINI

In the year marked by the coronavirus pandemic, we used our contacts and capabilities to produce and distribute protective equipment. In December, the company is renamed from the original ADLER Czech to MALFINI, a. s.



2023

AUTOMATION OF THE WAREHOUSING SYSTEM

We constantly work towards improving our services and providing you with better service. The automated AutoStore system allows us to pick and dispatch goods from our warehouse in Ostrava even more efficiently.

OUR BRANDS



You will always find the right outfit for various occasions in our wide portfolio.



It will appeal to anyone who prefers exclusive materials and elegant workmanship.



With playful colours and tear-off labels, you have your own T-shirt collection within reach.



Workwear you can rely on and look great in too.

THE UNSTOPPABLE PROCESS OF DESIGNING NEW PRODUCTS

We have two main seasons when we introduce new products, but the design and preparation process runs almost non-stop throughout the year.



IDEA

Incentives for new products come from different sources. Of course, we follow the market and current trends, and we also get ideas directly from our customers. Thanks to this, we have an inexhaustible source of inspiration. This allows us to create our product portfolio, add new products, reinvent collections and redesign existing models to suit your needs.



DEVELOPMENT

Next comes the technical part of the process, when the final cut of the product is decided. We prepare a precise sketch including a detailed description of all specifications. This includes careful selection of materials and colour variations in which the product will be sold. Every single step is important and requires maximum effort.



PRODUCTION

We want to fine-tune every prototype down to the very last detail. We check all modifications several times to make sure they are according to their original specifications. Whether it's the cut, the colour, the individual elements, everything goes through rigorous testing to ensure the highest quality. Only once we are completely satisfied do we begin production.



QUALITY PRODUCTS ARE A MUST

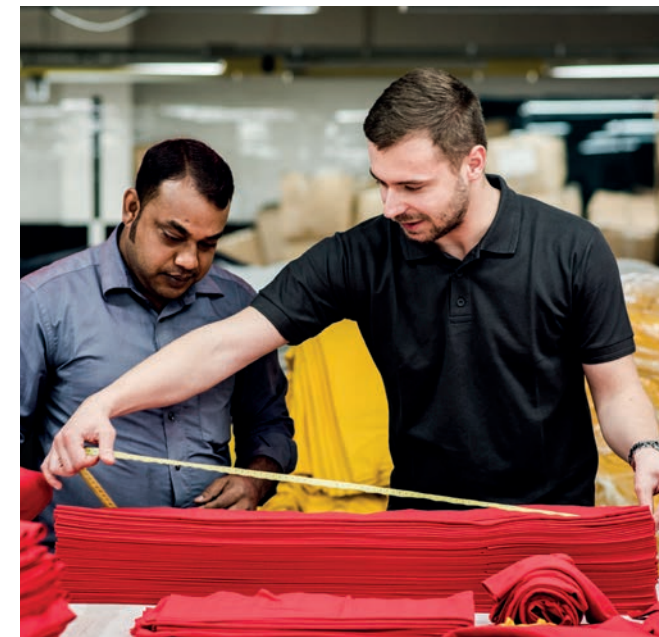
Not even the best additional services can make up for the absence of the most basic requirements. That is why the quality of our products is absolutely essential to us.



SELECTION OF SUPPLIERS IS CRUCIAL

Accountability for the entire production process is one of our key priorities. We base our relationship with our suppliers on respect, fairness, equality and longevity.

During the selection procedure, the quality and range of materials used, as well as the precise processing according to the specifications and, of course, the ability to meet deadlines are key for us. We also ensure that all production processes are carried out in a way that respects the sustainability of our planet and maintains good working conditions for all employees. That's why we prefer suppliers who hold globally recognised certificates.



REGULAR INSPECTION

Because we need to monitor so many different aspects at the same time, we need to keep an eye on everything during actual collaboration. We want certainty.

We carry out regular on-site inspections with the help of our colleagues from Asia and the Czech Republic. In the factory, we monitor all the above-mentioned quality specifications and working conditions. In short, we want to dress the world responsibly.



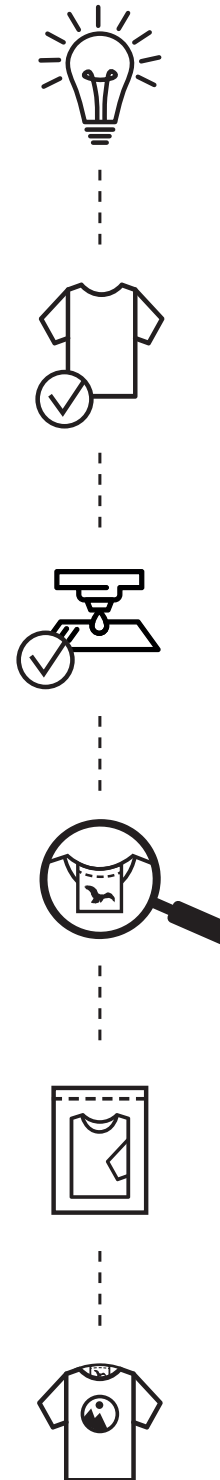
PRODUCT TESTING

To ensure that our products are of the highest quality, we test and inspect them after delivery, even here in the Czech Republic.

At the goods reception in the logistics centre, a quarter of the goods from each container go through a so-called MAX check, where we check each box for size, number of pieces and colour shade. 10% of each shipment received then undergoes a thorough quality control process that includes measuring dimensions, comparing colour to the master draft, weighing, checking shrinkage using wash tests and other details.

YOUR IDEA, YOUR BRAND

Whether you need to dress an employee, a group of friends or simply when you want to create your own clothing collection, there's no easier way. You just need an idea and we'll take care of the rest.



- ① IT ALL BEGINS WITH YOUR UNIQUE IDEA
- ② CHOOSE THE PRODUCT YOU WANT TO PRINT
- ③ WE WILL BE HAPPY TO ADVISE YOU ON THE CHOICE OF BRANDING TECHNOLOGY
- ④ THE DEVIL IS IN THE DETAILS, THAT'S WHY WE CAN ALSO CUSTOMISE THE LABEL
- ⑤ ONE-PIECE PACKAGING LOOKS PROFESSIONAL
- ⑥ THE FINAL RESULT IS YOUR OWN MERCH THAT MAKES QUITE THE IMPRESSION

Create your own collection.

Let your creativity loose and become a fashion icon! Create your own collection or brand and shine like never before. No worries about labels.

1. your own label
2. tear-off label
3. sticker label
4. label-free





Certified by Intertek
149203



CERTIFIED BY INTERTEK
149203-GRS

Behind every product that bears the Global Organic Textile Standard label lie the strictest regulations, from cultivation to production.

The globally respected GOTS certification guarantees organic and ethical production and quality throughout the supply chain.

Everything must be free from chemicals. Only natural methods are utilised, and no artificial fertilisers, pesticides or insecticides are used. At the same time ensuring safe working conditions for all employees, from cotton harvesting to clothing production.

Thanks to this certification, you can be sure that we wear clothes produced on the principles of ecology and ethics.

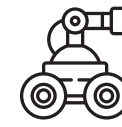


The GRS (Global Recycle Standard) certification aims to increase the use of recycled material in the textile industry. The certification sets requirements for a minimum percentage of recycled fibres. To carry the GRS label, products must contain 50% to 100% recycled material.

GRS follows at how textile production affects the natural world and people's lives. This standard consistently requires environmentally friendly manufacturing practices that protect the environment. All steps must be carefully recorded, including resource consumption and waste management. Hazardous chemicals have no place in production, and manufacturers must ensure a safe working environment and adequate compensation for their staff.

THE NEW STORAGE SYSTEM BENEFITS EVERYONE

Robotics and automation are the alpha and omega of modern logistics, and success depends on the right sales setup. The MALFINI distribution centre in Ostrava is a clear example of this.



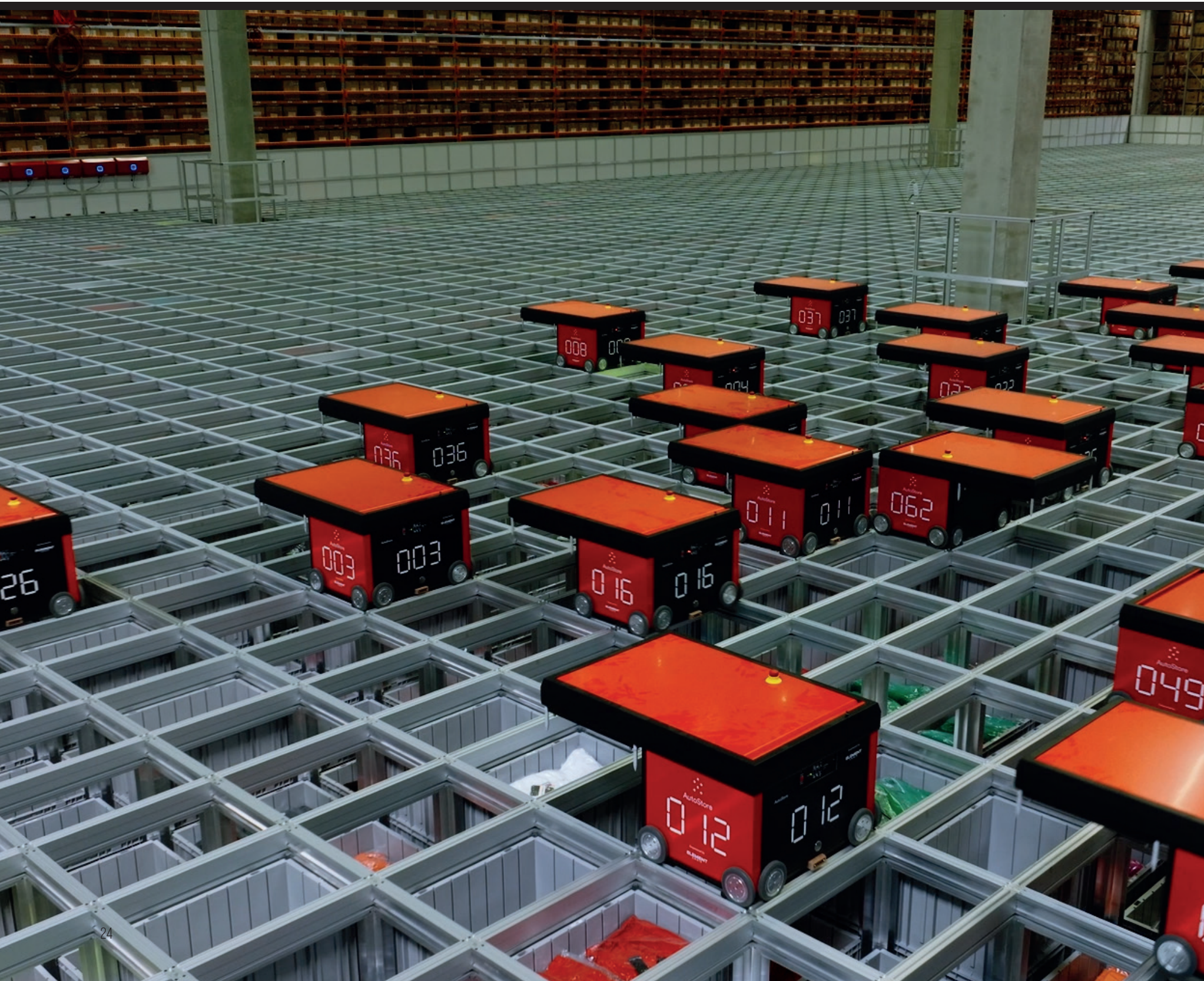
70
ROBOTS



UP TO
190,000 TEXTILES
PER DAY



50% HIGHER
LABOUR
PRODUCTIVITY



Thanks to the installation of the AutoStore system, the storage capacity of the 2,650 m² warehouse was increased up to 20%. Other key benefits include a 34% reduction of errors, faster dispatch and increased capacity, reduced energy costs and more accurate order processing.

Operators had to walk up to 18,000 steps a day before the new technology was installed. Today, they work from a stationary workstation, which improves ergonomics and reduces physical strain.

"All optimisations result in increased efficiency and better numbers, not only in productivity and error rates. I would also mention improved working conditions, increased safety and a reduction in the physical demands on the operators."

Michal Seltenreich, Technical Director



AutoStore robots enable accurate identification, handling and arrangement of goods, reducing the risk of errors and losses. The new facility can hold up to 100,000 plastic boxes, which is the equivalent of roughly 100 trucks.

WITH US, CARE IS PROVIDED BY PEOPLE, NOT ALGORITHMS

It may not be as common in this day and age of technology and automation, but a personal approach and quality service is still one of the pillars of cooperation in our company.



37
COUNTRIES



12 WORLD
LANGUAGES



4,800 CALLS
PER MONTH



While automation and digital communication are on the rise, we still rely on a personal approach. Our operators pay each customer individual attention. With us, you can be sure that we won't just entrust you to algorithms, but there will always be a human on the other end of the line to help you. It is important for us to maintain contact with our customers and provide them with first-class service that goes beyond the usual automated processes. This approach allows us to build long-term relationships based on trust, reliability and a human approach.



We operate from five key offices:
ÚSTÍ NAD LABEM (CZ), DRESDEN (DE), ZAGREB (HR), BUDAPEST (HU) AND HUNEDOARA (RO)
We have nine showrooms in eight European countries.

We help our customers with their requirements on a daily basis. Last year, we handled a total of 58,000 incoming calls, an average of 4,800 calls per month. We mostly deal with orders, recommend suitable textiles or determine the current status of deliveries in cooperation with carriers. In addition, our operators also handle a large number of email enquiries.

FUN FACT

The longest recorded call with our Italian client lasted an incredible 56 minutes.

WE SUPPORT YOUR SUCCESS

We don't want to 'just' deliver a quality product. We care about delivering the best possible service for your successful business. That's why we try to go above and beyond the standard expectations.



YOUR OWN E-SHOP IN NO TIME

There is probably no easier way to go about selling something these days. Creating your own e-shop may seem like a daunting task at first, but there are three easy ways to implement all of our product data, pricing and stock availability.

B2B rest API – the most advanced and best solution, connected automatically directly to our system, enables the automatic sending of orders.

XML feed – automated data file, supported by almost all current systems and turnkey e-shops, super easy to implement.

CSV file – one-time data export, quick and easy implementation, no need to update manually when any change is made.

ONLINE CATALOGUE IN A FEW CLICKS

If you don't need your own e-shop, we offer you the possibility to create your own version of our e-shop using the ONLINE CATALOGUE function. It gives you your own web-address with all our products, including an enquiry option.

SAMPLE SET WITH 25% DISCOUNT

Up to four times a year, you can order a selected mix of products with a 25% discount. You can touch and try out new products yourself or show them directly to your customers.



MOVING FORWARD TOGETHER

Wealth lies in information. We are constantly trying to acquire new knowledge from different sources to share with you.



WE EXHIBIT AT MAJOR TRADE FAIRS

Several times a year, we visit important textile trade fairs all over Europe. This gives us access to the latest information and of course provides us another opportunity to meet our customers.

PREPARING JOINT MEETINGS

We try to hold a meeting with our customers once a year in each of the countries in which we operate. We'll present news, gather information from you, or just chat.

WE PASS ON INFORMATION AT WORKSHOPS

But besides having fun, we also need to educate ourselves. We cover a variety of topics in our workshops, which are held both online and in person. These include topics on how to set up your own e-shop, or introducing new products, apps and tools you can use.

WE ATTEND INTERESTING CONFERENCES

At various trainings and conferences, we draw more detailed information from our industry, which we can then pass on to you or implement directly into our processes to provide you with even better service.





T-SHIRTS —

T-shirts are an integral part of our everyday life. They have evolved over time into an art and personal expression phenomenon from the original practical workwear purpose. A canvas for expressing creativity, opinions, or interests.

129
XS-5XL



134
XS-3XL



138
4 years/110 cm-12 years/158 cm



BASIC 129, 134, 138

T-shirt men's · women's · kids
XS-5XL · XS-3XL · 4 y./110 cm-12 y./158 cm
Single Jersey, 100 % cotton, silicone finish, 160 g/m²

· narrow 1:1 rib knit neckline hem with 5 % elastane
Men's: tubular cut · Woman's: slight fit cut with side seams · Kids: cut with side seams



129
XS-5XL

134
XS-3XL

138
4 years/110 cm-12 y./158 cm

	00	51	03*	12*	36	67	94	01	02	87	05	70	14	15	44	60	93	19	95	C9	A7	92	62	16	06
129	□	■	■	■	■	■	■	■	■	■	■	■	■	■	■	■	■	■	■	■	■	■	■	■	■
134	□	■	■	■	■	■	■	■	■	■	■	■	■	■	■	■	■	■	■	■	■	■	■	■	■
138	□	■	■	■	■	■	■	■	■	■	■	■	■	■	■	■	■	■	■	■	■	■	■	■	■
	69	09	28	27	29	08			96	04	A2	11	A1	07	23			43	86	30	D1	40	49	64	
129	■	■	■	■	■	■	■	■	■	■	■	■	■	■	■	■	■	■	■	■	■	■	■	■	■
134	■	■	■	■	■	■	■	■	■	■	■	■	■	■	■	■	■	■	■	■	■	■	■	■	■
138	■	■	■	■	■	■	■	■	■	■	■	■	■	■	■	■	■	■	■	■	■	■	■	■	■

129: 5XL size available in colours 00, 01, 02, 05, 06, 07, 12, 67
134: 3XL size available in colours 00, 01, 02, 05, 07, 12, 30

* Material composition may differ: colour 03 - 97 % cotton, 3 % viscose; colour 12 - 85 % cotton, 15 % viscose
For further information about the delivery date of new arrivals, please contact the Sales department.



BASIC 129, 134

narrow 1:1 rib knit neckline
hem with 5 % elastane

inner back
neckline with
a shell fabric tape

silicone finish

tubular cut

slight fit cut
with side seams





BASIC FREE F29, F34, F38

T-shirt men's · women's · kids
 S-3XL · XS-2XL · 4 years/110 cm - 12 y./158 cm
 Single Jersey, 100 % cotton, silicone finish, 160 g/m²

· label free - ready for rebranding · narrow 1:1 rib knit neckline hem with 5 % elastane
 men's: tubular cut · woman's: slight fit cut with side seams · kids: cut with side seams



F29 S-3XL F34 XS-2XL F38 4 years/110 cm - 12 y./158 cm

	00	03*	12*	67	01	02	05	14	44	62	16	06	09	04	07	64
F29	□	■	■	■	■	■	■	■	■	■	■	■	■	■	■	■
F34	□	■	■	■	■	■	■	■	■	■	■	■	■	■	■	■
F38	□	■	■	■	■	■	■	■	■	■	■	■	■	■	■	■

F34: XS size available in colours 00, 01

* Material composition may differ: colour 03 - 97 % cotton, 3 % viscose; colour 12 - 85 % cotton, 15 % viscose



BASIC RECYCLED 829

T-shirt men's

XS-5XL

Single Jersey, 70 % cotton, 30 % (GRS) recycled cotton, silicone finish, 160 g/m²

· 30 % (GRS) certified recycled cotton · tubular cut · narrow 1:1 rib knit neckline hem with 5 % elastane



829
XS-5XL





STAGE 812

T-shirt unisex
XS-3XL

Single Jersey, 100 % cotton, enzymatic finish, 200 g/m²

- label free - ready for rebranding
- loose oversized cut with side seams
- 1:1 rib knit neckline hem with 5 % elastane
- low cap sleeves



812
XS-3XL



*XS, 3XL only in colours 00, 01



VIPER 143, 161

T-shirt men's · women's
S-3XL · XS-2XL

Single Jersey, 100 % cotton, silicone finish, 180 g/m²

Men's: slim fit cut with side seams, narrow 1:1 rib knit neckline hem with 5 % elastane
Woman's: slight fit cut with side seams, narrow neckline hem from shell fabric with 5 % elastane



143: 3XL size available in colours 00, 01, 02, 05, 07, 12, 161: XS size available in colours 00, 01

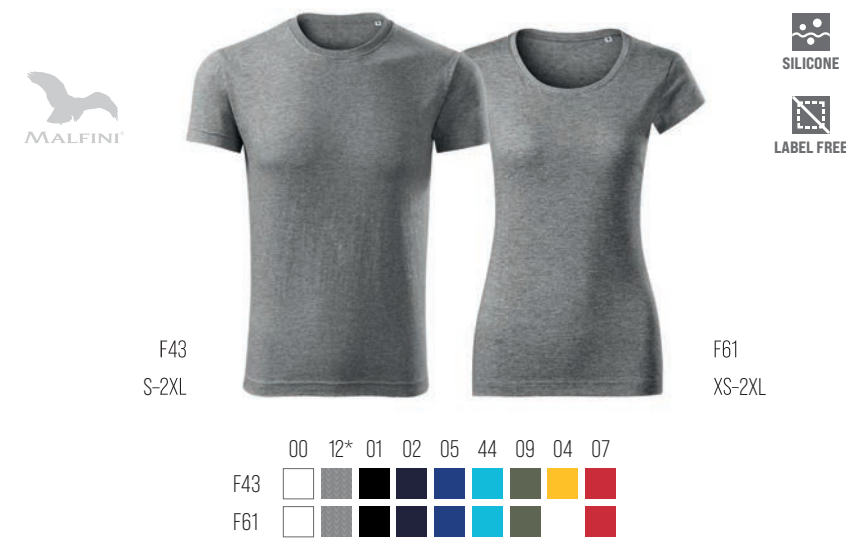
VIPER FREE F43, F61

T-shirt men's · women's
S-2XL · XS-2XL

Single Jersey, 100 % cotton, silicone finish, 180 g/m²

· label free - ready for rebranding

Men's: slim fit cut with side seams, narrow 1:1 rib knit neckline hem with 5 % elastane
Woman's: slight fit cut with side seams, narrow neckline hem from shell fabric with 5 % elastane



F61: XS size available in colours 00, 01

* Material composition may differ: colour 12 - 85 % cotton, 15 % viscose



PEAK P74

T-shirt unisex
XS-4XL

Single Jersey, 100 % cotton, 175 g/m²

- tubular cut · 1:1 rib knit neckline hem

P



P74
XS-4XL



XS, 4XL size available in colours 00, 01

PARADE P71

T-shirt unisex
XS-4XL

Single Jersey, 100 % cotton, 135 g/m²

- tubular cut · 1:1 rib knit neckline hem

P



P71
XS-4XL



PAINT P73

T-shirt unisex
XS-4XL

Single Jersey, 100 % cotton, 150 g/m²

- tubular cut · 1:1 rib knit neckline hem

P



P73
XS-4XL



** Material composition may differ: colour 03 - 97 % cotton, 3 % viscose; colour 12 - 85 % cotton, 15 % viscose*

PELICAN P72

T-shirt kids

4 years/110 cm-12 y./158 cm

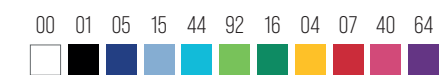
Single Jersey, 100 % cotton, 135 g/m²

- cut with side seams
- 1:1 rib knit neckline hem

P



P72
4 years/110 cm-12 y./158 cm





PURE 122

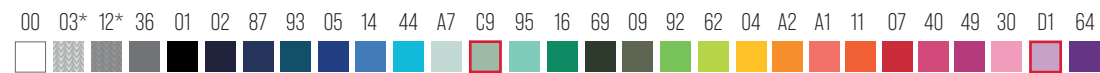
T-shirt women's
XS-3XL

Single Jersey, 100 % cotton, silicone finish, 150 g/m²

- slight fit cut with side seams · neckline trimmed with shell fabric



122
XS-3XL



size available in colours 00, 01; 3XL size available in colours 00, 01, 02, 07, 12

CITY 120

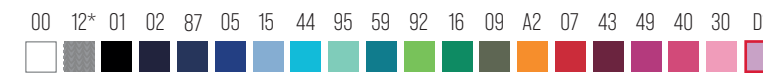
T-shirt women's
XS-3XL

Single Jersey, 100 % cotton, silicone finish, 150 g/m²

- loose cut with side seams · neckline trimmed with shell fabric



120
XS-3XL



XS, 3XL size available in colours 00, 01

GLANCE 141

T-shirt women's
XS-2XL

Single Jersey, 95 % cotton, 5 % elastane, 180 g/m²

- stretch fabric for better dimensional stability · slim fit cut with side seams · narrow neckline hem from shell fabric



141
XS-2XL



size available in colours 00, 01

LOVE 123

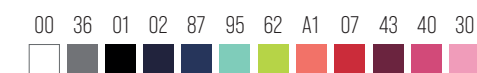
T-shirt women's
S-2XL

Single Jersey, 95 % viscose, 5 % elastane, 170 g/m²

- loose cut with side seams · length below hip line · boat neckline · neckline trimmed with shell fabric · kimono sleeves



123
S-2XL



* Material composition may differ: colour 12 - 85 % cotton, 15 % viscose
For further information about the delivery date of new arrivals, please contact the Sales department.

* Material composition may differ: colour 3 - 97 % cotton, 3 % viscose, colour 12 - 85 % cotton, 15 % viscose; ** colour 12 - 80 % cotton, 15 % viscose, 5 % elastane
For further information about the delivery date of new arrivals, please contact the Sales department.



FREEDOM ¹⁷⁸

Dress women's
S-2XL

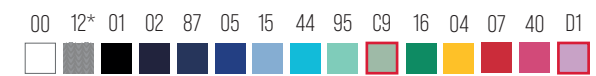
Single Jersey, 100 % cotton, 180 g/m²

- loose slightly shaped cut · above knee length · narrow neckline hem from shell fabric with 5 % elastane
- turned-up sleeves stitched in 4 points · contrast elements

 LABEL FREE  NEW COLOUR



178
S-2XL



** Material composition may differ: colour 12 - 85 % cotton, 15 % viscose
For further information about the delivery date of new arrivals, please contact the Sales department.*



ORGANIC COTTON

Cotton produced from ecologically controlled agriculture and further processed under the strict inspection of all manufacturing processes. The biggest producers are Turkey, India, the USA and China. Certified by Intertek GOTS-149203.



ORIGIN 171, 172

T-shirt men's · women's
S-3XL · XS-2XL

Single Jersey, 100 % organic cotton GOTS, 160 g/m²

- narrow neckline hem from shell fabric with 5 % elastane · curved bottom edge
- Men's: cut with side seams · Woman's: slight fit cut with side seams



Certified by Intertek
149203

171
S-3XL

172
XS-2XL



NATIVE 173, 174

T-shirt men's · women's
S-3XL · XS-2XL

Single Jersey Slub, 100 % organic cotton GOTS, 150 g/m²

- thick-thin structure of slub knit fabric · narrow neckline hem from shell fabric with 5 % elastane
- Men's: cut with side seams · Woman's: slight fit cut with side seams



Certified by Intertek
149203

173
S-3XL

174
XS-2XL





SUPIMA®

The brand represents the finest cotton of 1% worldwide production. This type of the US grown Pima cotton has over a hundred years' history. Its unique extra-long fibers are twice the strength of regular cotton.



EXCLUSIVE 153, 154

T-shirt men's · women's
S-3XL · S-2XL

Single Jersey, 100 % SUPIMA® cotton, 160 g/m²

- the finest SUPIMA® cotton · slim fit cut with side seams
- narrow 1:1 rib knit neckline hem with 5 % elastane · contrast elements



153
S-3XL

154
S-2XL

	00	A4	01	02	83	93	A3	71
153								
154								

153: 3XL size available in colours 00, 01



CLASSIC NEW 132, 133, 135

T-shirt men's · women's · kids
S-3XL · XS-2XL · 4 years/110 cm-12 y./158 cm
Single Jersey, 100 % cotton, 145 g/m²

· narrow 1:1 rib knit neckline hem
Men's: tubular cut · Woman's: slight fit cut with side seams · Kids: cut with side seams



132 S-3XL
133 XS-2XL
135 4 years/110 cm-12 y./158 cm

	00	03*	12*	67	94	01	02	87	05	15	44	92	62	16	06	69	09	08	28	29	96	04	11	07	40	64
132	□	■	■	■	■	■	■	■	■	■	■	■	■	■	■	■	■	■	■	■	■	■	■	■	■	■
133	□	■	■	■	■	■	■	■	■	■	■	■	■	■	■	■	■	■	■	■	■	■	■	■	■	■
135	□	■	■	■	■	■	■	■	■	■	■	■	■	■	■	■	■	■	■	■	■	■	■	■	■	■

133: XS size available in colours 00, 01

CLASSIC 101, 100

T-shirt unisex · kids
S-4XL · 4 years/110 cm-12 y./158 cm
Single Jersey, 100 % cotton, 160 g/m²

· 1:1 rib knit neckline hem
Unisex: tubular cut · Kids: cut with side seams



101 S-4XL
100 4 years/110 cm-12 y./158 cm

	00	03*	12*	01	02	05	06	04	11	07
101	□	■	■	■	■	■	■	■	■	■
100	□	■	■	■	■	■	■	■	■	■

4XL size available in colours 00, 01



COLORMIX 109

T-shirt unisex

S-4XL

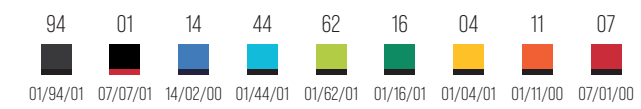
Single Jersey, 100 % cotton, 200 g/m²

- cut with side seams
- 1:1 rib knit neckline hem with 5 % elastane

R



109
S-4XL



STREET LS 130

T-shirt unisex

S-4XL

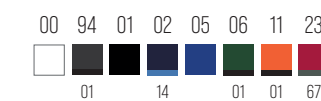
Single Jersey, 100 % cotton, 180 g/m²

- cut with side seams · narrow 1:1 rib knit neckline hem with 5 % elastane
- 1:1 rib knit cuff with 5 % elastane

R



130
S-4XL



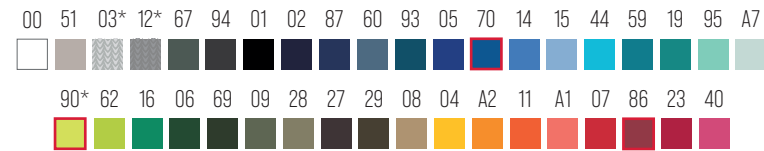


HEAVY NEW 137

T-shirt unisex
XS-5XL

Single Jersey, 100 % cotton, silicone finish, 200 g/m²

- tubular cut · narrow 1:1 rib knit neckline hem with 5 % elastane



XS, 4XL size available in colours 00, 01, 02, 05, 07; 5XL size in 00, 01

HEAVY 110

T-shirt unisex
S-3XL

Single Jersey, 100 % cotton, 200 g/m²

- tubular cut · 1:1 rib knit neckline hem with 5 % elastane



110
S-3XL



3XL size available in colours 00, 01, 02, 03, 05, 06, 07, 94

HEAVY NEW FREE F37

T-shirt unisex
XS-3XL

Single Jersey, 100 % cotton, silicone finish, 200 g/m²

- label free - ready for rebranding
- tubular cut · narrow 1:1 rib knit neckline hem with 5 % elastane



F37
XS-3XL



XS size available in colours 00, 01

ELEMENT 145

T-shirt unisex
XS-4XL

Single Jersey, 100 % cotton, 180 g/m²

- tubular cut · narrow 1:1 rib knit neckline hem with 5 % elastane · tear-off label



145
XS-4XL



XS, 4XL size available in colours 00, 01

* Material composition may differ: colour 03 - 97 % cotton, 3 % viscose; colour 12 - 85 % cotton, 15 % viscose, colour 90 - 50 % cotton, 50 % polyester
For further information about the delivery date of new arrivals, please contact the Sales department.

* Material composition may differ: colour 03 - 97 % cotton, 3 % viscose; colour 12 - 85 % cotton, 15 % viscose



RESIST R01, R02

T-shirt men's · women's

S-4XL · S-3XL

Single Jersey, 100 % pre-shrunk cotton, 160 g/m²

- pre-shrunk cotton resistant to higher temperatures · neckline trimmed with 1:1 rib knit fabrics
- men's: cut with side seams
- women's: slight fit cut with side seams



RESIST HEAVY R03, R04

T-shirt men's · women's

S-4XL · S-3XL

Single Jersey, 100 % pre-shrunk cotton, 200 g/m²

- pre-shrunk cotton resistant to higher temperatures · neckline trimmed with 1:1 rib knit fabric
- men's - cut with side seams · women's - slight fit cut with side seams



For further information about the delivery date of new arrivals, please contact the Sales department.

RESIST LS R05

T-shirt unisex

S-3XL

Single Jersey, 100 % pre-shrunk cotton, 160 g/m²

- pre-shrunk cotton resistant to higher temperatures · cut with side seams
- neckline trimmed with 1:1 rib knit fabric · 1:1 rib knit cuff



For further information about the delivery date of new arrivals, please contact the Sales department.



ACTION 150, 152

T-shirt men's · women's
S-3XL · XS-2XL

Single Jersey, 95 % cotton, 5 % elastane, 180 g/m²

- stretch fabric for better dimensional stability · slim fit cut with side seams
- narrow 1:1 rib knit neckline hem with 5 % elastane · decorative stitching · contrast elements



150
S-3XL

152
XS-2XL

00 83 01 02 70 93 71 86



150: 3XL size available in colours 00, 01

152: XS size available in colours 00, 01

ACTION V-NECK 700, 701

T-shirt men's · women's
S-2XL · S-2XL

Single Jersey, 95 % cotton, 5 % elastane, 180 g/m²

- stretch fabric for better dimensional stability · slim fit cut with side seams
- narrow 1:1 rib knit neckline hem with 5 % elastane · contrast elements



700
S-2XL

701
S-2XL

00 83 01 02 71 86





V-NECK 102

T-shirt unisex
S-3XL
Single Jersey, 100 % cotton, 160 g/m²

- tubular cut · 1:1 rib knit neckline hem



102
S-3XL



SLIM FIT V-NECK 146 FIT V-NECK 162

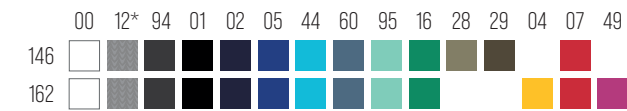
T-shirt men's · women's
S-3XL · XS-2XL
Single Jersey, 100 % cotton, silicone finish, 180 g/m²

- Men's: slim fit cut with side seams · narrow 1:1 rib knit neckline hem with 5 % elastane
- Woman's: slight fit cut with side seams · narrow neckline hem from shell fabric with 5 % elastane



146
S-3XL

162
XS-2XL



162: XS size available in colours 00, 01

HEAVY V-NECK 111

T-shirt unisex
S-4XL
Single Jersey, 100 % cotton, 200 g/m²

- tubular cut · narrow 1:1 rib knit neckline hem with 5 % elastane



111
S-4XL



S, 4XL size available in colours 00, 01

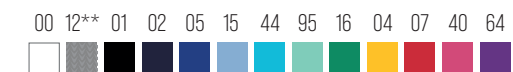
DREAM 128

T-shirt women's
XS-3XL
Single Jersey, 95 % cotton, 5 % elastane, 180 g/m²

- stretch fabric for better dimensional stability · slim fit cut with side seams
- neckline trimmed with shell fabric · short raglan sleeves



128
XS-3XL



XS, 3XL size available in colours 00, 01



TRIUMPH 136

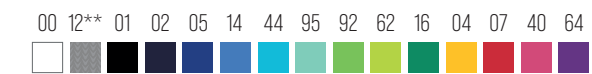
Top women's
XS-2XL

Single Jersey, 95 % cotton, 5 % elastane, 180 g/m²

- stretch fabric for better dimensional stability · slim fit cut with side seams
- neckline and armholes trimmed with shell fabric



136
XS-2XL



XS size available in colours 00, 01

CORE 142

Top men's
S-2XL

Single Jersey, 100 % cotton, 160 g/m²

- tubular cut · neckline and armholes trimmed with shell fabric



142
S-2XL



S size available in colours 00, 01

*Material composition may differ. *colour 12 - 85 % cotton, 15 % viscose; **colour 12 - 80 % cotton, 15 % viscose, 5 % elastane*



SAILOR 803, 804, 805

T-shirt unisex · women's · kids
XS-3XL · XS-2XL · 4 years/110 cm-12 y./158 cm
Single Jersey, 100 % cotton, 150 g/m²

· narrow 1:1 rib knit neckline hem with 5 % elastane
Unisex/Kids: cut with side seams · Woman's: slight fit cut with side seams



803
XS-3XL

804
XS-2XL

805
4 years/110 cm-12 y./158 cm





SAILOR LS 807

T-shirt unisex
S-3XL
Single Jersey, 100 % cotton, 150 g/m²

- stretch fabric for better dimensional stability · neckline trimmed with 1:1 rib knit fabric with 5 % elastane



CAMO PURE C22

T-shirt women's
S-2XL
Single Jersey, 100 % cotton, silicone finish, 150 g/m²

- slight fit cut with side seams · slim fit cut with side seams · neckline trimmed with shell fabric



SAILOR TOP 806

Top women's
S-2XL
Single Jersey, 95 % cotton, 5 % elastane, 180 g/m²

- stretch fabric for better dimensional stability · slim fit cut with side seams · neckline and armholes trimmed with shell fabric



CAMOUFLAGE 144, 149

T-shirt unisex · kids
S-3XL · 4 years/110 cm-12 y./158 cm
Single Jersey, 100 % cotton, 160 g/m²

- cut with side seams · narrow 1:1 rib knit neckline hem with 5 % elastane





MERINO

Merino wool is world renowned for its soft, yet firm feel, offering advantages in every area over common wool and many other fibers. The reason for these qualities is the size of an individual fiber – and merino wool fibers are very fine, thinner than 18 microns.



MERINO RISE 157, 158

T-shirt men's · women's
S-3XL · S-2XL

Single Jersey, 100 % merino wool, 17,5 µm, machine wash, 190 g/m²

- extra-fine merino wool · wrinkle-free and highly breathable fabric
- thermoregulating and antibacterial features · the ability of moisture wicking and odor absorption
- slim fit cut with side seams · narrow neckline hem from shell fabric



- MERINO
- REGULATION
- BREATHABLE
- ODOR RESISTANT

MERINO RISE LS 159, 160

T-shirt men's · women's
S-3XL · S-2XL

Single Jersey, 100 % merino wool, 17,5 µm, machine wash, 190 g/m²

- extra-fine merino wool · wrinkle-free and highly breathable fabric
- thermoregulating and antibacterial features · the ability of moisture wicking and odor absorption
- slim fit cut with side seams · narrow neckline hem from shell fabric



- MERINO
- REGULATION
- BREATHABLE
- ODOR RESISTANT



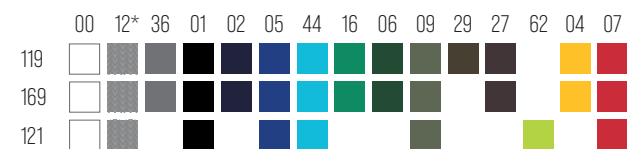
FIT-LS 119, 169, 121

T-shirt men's · women's · kids
S-3XL · XS-3XL · 4 years/110 cm-12 y./158 cm
Single Jersey, 100 % cotton, 160 g/m²

men's: slim fit cut with side seams · neckline trimmed with 1:1 rib knit fabric
woman's: slight fit cut with side seams · narrow 1:1 rib knit neckline hem with 5 % elastane
kids: cut with side seams · neckline trimmed with 1:1 rib knit fabric



119 S-3XL
169 XS-3XL
121 4 years/110 cm-12 y./158 cm



119: S, 3XL size available in colours 00, 01, 02
169: XS, 3XL size available in colours 00, 01

* Material composition may differ: colour 12 - 85 % cotton, 15 % viscose

PROGRESS LS P75

T-shirt unisex
XS-3XL
Single Jersey, 100 % cotton, 150 g/m²

· tubular cut · 1:1 rib knit neckline hem



P75
XS-3XL



XS only in colours 00, 01, 02; 3XL only in colours 00, 01

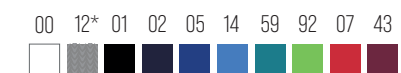
ELEGANCE 127

T-shirt women's
XS-3XL
Single Jersey, 95 % cotton, 5 % elastane, 180 g/m²

· stretch fabric for better dimensional stability · slim fit cut with side seams · long raglan sleeves
· neckline trimmed with shell fabric



127
XS-3XL



XS, 3XL size available in colours 00, 01

* Material composition may differ: colour 03 - 97 % cotton, 3 % viscose; colour 12 - 80 % cotton, 15 % viscose, 5 % elastane



SLIM 139

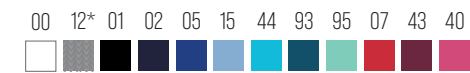
T-shirt women's
XS-3XL

Single Jersey, 95 % cotton, 5 % elastane, 180 g/m²

- stretch fabric for better dimensional stability · slim fit cut with side seams · neckline trimmed with shell fabric



139
XS-3XL



XS, 3XL size available in colours 00, 01

BRAVE 155, 156

T-shirt men's · women's
S-3XL · XS-2XL

Single Jersey, 95 % cotton, 5 % elastane, 160 g/m²

- stretch fabric for better dimensional stability · slim fit cut with side seams
- narrow 1:1 rib knit neckline hem with 5 % elastane · contrast elements



155
S-3XL

156
XS-2XL



*155: S, 3XL only in colours 00, 01, 02
156: XS only in colours 00, 01*

** Material composition may differ: colour 12 - 80 % cotton, 15 % viscose, 5 % elastane*



POLO SHIRTS —

Polo shirts are not just for tennis. Polo shirts have become a fundamental element in many wardrobes due to their elegant appearance and high comfort. They are suitable for both sporting activities and everyday wear.



PIQUE POLO 203, 210, 222

Polo Shirt men's · women's · kids

S-5XL · XS-3XL · 6 y./122 cm-12 y./158 cm

Pique, 65 % cotton, 35 % polyester, 200 g/m²

- 1:1 rib knit collar and sleeve hems with double relief stripe
- men's/Kids: cut with side seams · woman's: slight fit cut with side seams



203
S-5XL

210
XS-3XL

222
6 y./122 cm-12 y./158 cm

	00	03*	12*	36	67	20	94	01	02	87	05	70	14	15	44	59	95	A7	C9	92	16	06	69	09	27	08	04	A2	11	07	86	30	40	D1	64	
203	□	■	■	■	■	■	■	■	■	■	■	■	■	■	■	■	■	■	■	■	■	■	■	■	■	■	■	■	■	■	■	■	■	■	■	■
210	□	■	■	■	■	■	■	■	■	■	■	■	■	■	■	■	■	■	■	■	■	■	■	■	■	■	■	■	■	■	■	■	■	■	■	■
222	□	■	■	■	■	■	■	■	■	■	■	■	■	■	■	■	■	■	■	■	■	■	■	■	■	■	■	■	■	■	■	■	■	■	■	■

203: 4XL size available in colour 00, 01, 02, 04, 05, 06, 07, 09, 11, 12, 15, 94; 5XL size available in colour 00, 01;
210: 3XL size available in colour 00, 01, 07

* Material composition may differ: colour 03 - 97 % cotton, 3 % viscose; colour 12 - 85 % cotton, 15 % viscose
For further information about the delivery date of new arrivals, please contact the Sales department.

PIQUE POLO FREE ^{F03, F10, F22}

Polo Shirt men's · women's · kids
 S-3XL · XS-2XL · 6 y./122 cm-12 y./158 cm
 Pique, 65 % cotton, 35 % polyester, 200 g/m²

- label free - ready for rebranding · 1:1 rib knit collar and sleeve hems with double relief stripe
 men's/kids: cut with side seams · woman's: slight fit cut with side seams



F03 S-3XL F10 XS-2XL F22 6 y./122 cm-12 y./158 cm

	00	12*	01	02	05	15	44	92	16	06	69	09	04	07	40
F03	□	■	■	■	■	■	■	■	■	■	■	■	■	■	■
F10	□	■	■	■	■	■	■	■	■	■	■	■	■	■	■
F22	□	■	■	■	■	■	■	■	■	■	■	■	■	■	■

F10: XS size available in colours 00, 01

RESIST HEAVY POLO ^{R20, R21}

Polo shirt men's · women's
 S-4XL · XS-3XL
 Pique, 100 % pre-shrunk cotton, 200 g/m²

- preshrunk cotton resistant to higher temperatures · 1:1 rib knit collar and sleeve hems · separated pocket for easy branding
 men's: cut with slits in the side seams · women's: slight fit cut with slits in side seams



R20 S-4XL R21 XS-3XL

	00	94	01	02	05	06	04	11	07
R20	□	■	■	■	■	■	■	■	■
R21	□	■	■	■	■	■	■	■	■

R21: XS size available in colours 00, 01



PIQUE POLO LS 221, 231, 241

Polo Shirt men's · women's · kids
 S-3XL · XS-2XL · 6 years/122 cm-12 y./158 cm
 Pique, 65 % cotton, 35 % polyester, 200 g/m²

· 1:1 rib knit collar with double relief stripe
 men's/kids: cut with side seams · women's: slight fit cut with side seams



221	231	241
S-3XL	XS-2XL	6 years/122 cm-12 y./158 cm

	00	12*	94	01	02	05	15	92	16	06	04	07
221	□	■	■	■	■	■	■	■	■	■	■	■
231	□	■	■	■	■	■	■	■	■	■	■	■
241	□			■	■	■	■	■				■

*Material composition may differ: colour 12 - 85 % cotton, 15 % viscose
 For further information about the delivery date of new arrivals, please contact the Sales department.

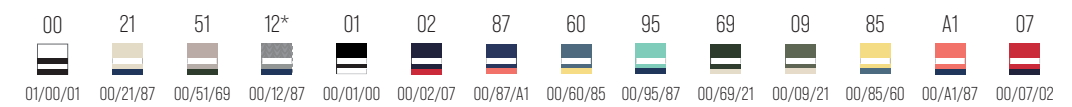


FOCUS 232, 233

Polo Shirt men's · women's
S-3XL · S-2XL

Pique, 65 % cotton, 35 % polyester, 180 g/m²

· 1:1 rib knit collar · contrast elements
men's: cut with side seams · woman's: slight fit cut with side seams

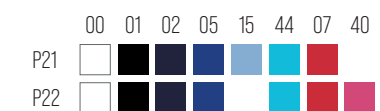


JOY P21, P22

Polo shirt men's · women's
S-3XL · S-2XL

Pique, 65 % cotton, 35 % polyester, 170 g/m²

· 1:1 rib knit collar and sleeve hems
men's: cut with side seams · ladies: slight fit cut with side seams



* Material composition may differ: colour 12 - 85 % cotton, 15 % viscose



MERCERIZED COTTON

The process of mercerization consists of immersing the cotton yarn into a bath for the purpose of changing their sections and leveling uneven fibers. The fiber cross-section thus obtains an almost perfect shape. The final material becomes smoother shinier and softer. Mercerization results in higher strength and better color stability of the material.

PERFECTION PLAIN 251, 253

Polo shirt men's · women's
S-3XL · S-2XL

Pique, 95 % cotton, 5 % elastane, 200 g/m²

- slim fit cut with side seams · stretch fabric for better dimensional stability
- 1:1 rib knit collar and sleeve hems with a contrast stripe · contrast elements



251
S-3XL

253
S-2XL



URBAN 219, 220

Polo Shirt men's · women's
S-3XL · XS-2XL

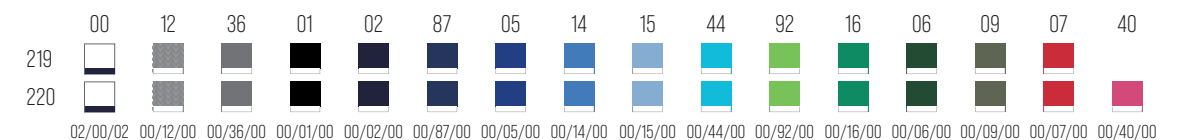
Pique, 65 % cotton, 35 % polyester, 200 g/m²

- 1:1 rib knit collar and sleeve hems with a contrast stripe
- men's: cut with side seams · woman's: slight fit cut with side seams



219
S-3XL

220
XS-2XL



220: XS size available in colours 00, 01

*Material composition may differ: colour 12 - 80 % cotton, 15 % viscose, 5 % elastane



PRIME 234, 235

Polo Shirt men's · women's
S-3XL · XS-2XL

Pique, 100 % organic cotton GOTS, 200 g/m²

· 1:1 rib knit collar and sleeve hems · contrast elements
men's: cut with side seams · woman's: slight fit cut with side seams



Certified by Intertek
149203

234
S-3XL

235
XS-2XL



GRAND 259, 269

Polo shirt men's · women's
S-2XL · S-2XL

Single Jersey, 100 % mercerized cotton, 160 g/m²

· 1:1 rib knit collar with a contrast stripe · contrast elements · cotton treated by mercerization
men's: cut with side seams · ladies: slight fit cut with side seams



259
S-2XL

269
S-2XL



* Material composition may differ: Colour 12 - 80 % cotton, 15 % viscose, 5 % elastane



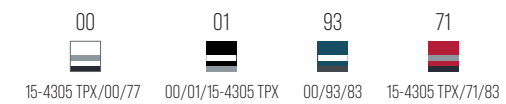
DRESS UP 271

Dress women's
S-2XL
Pique, 100 % cotton, 215 g/m²

- slight fit cut with side seams
- 1:1 rib knit collar and sleeve hems
- contrast elements



271
S-2XL



COLLAR UP 256, 257

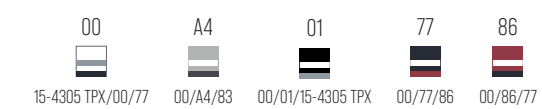
Polo shirt men's · women's
S-3XL · S-2XL
Pique, 100 % cotton, 215 g/m²

- 1:1 rib knit collar and sleeve hems · contrast elements
- men's: cut with side seams · ladies: slight fit cut with side seams



256
S-3XL

257
S-2XL





DIAMOND 273, 274

Polo shirt men's · women's
S-3XL · S-2XL

Pique, 100 % cotton, 215 g/m²

- "bomber" collar · jacquard knit collar and sleeve hems with a contrast stripe · contrast elements
- men's: cut with side seams · ladies: slight fit cut with side seams



273
S-3XL

274
S-2XL



COTTON 212, 213

Polo Shirt men's · women's
S-3XL · XS-2XL
Pique, 100 % cotton, 170 g/m²

- 1:1 rib knit collar and sleeve hems · separated pocket for easy branding
- men's: cut with slits in the side seams · woman's: slight fit cut with slits in side seams

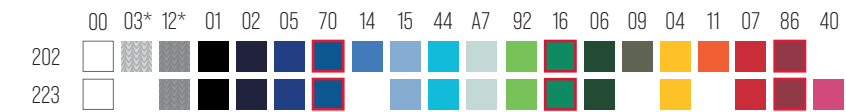


213: XS size available in colours 00, 01

SINGLE J. 202, 223

Polo Shirt men's · women's
S-3XL · XS-2XL
Single Jersey, 100 % cotton, silicone finish, 180 g/m²

- 1:1 rib knit collar
- men's: cut with side seams · woman's: slight fit cut with side seams



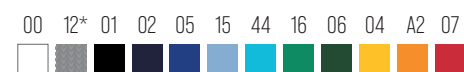
202: 3XL size available in colours 00, 01, 02, 05, 07, 12

223: XS size available in colours 00, 01

COTTON HEAVY 215, 216

Polo Shirt men's · women's
S-3XL · S-2XL
Pique, 100 % cotton, 220 g/m²

- 1:1 rib knit collar and sleeve hems
- men's: cut with slits in the side seams · woman's: slight fit cut with slits in side seams



* Material composition may differ: colour 03 - 97 % cotton, 3 % viscose; colour 12 - 85 % cotton, 15 % viscose

SINGLE J. LS 211

Polo Shirt men's
S-2XL
Single Jersey, 100 % cotton, 180 g/m²

- cut with side seams · 1:1 rib knit collar and sleeve cuffs · long sleeves ended by cuffs



* Material composition may differ: colour 03 - 97 % cotton, 3 % viscose; colour 12 - 85 % cotton, 15 % viscose
For further information about the delivery date of new arrivals, please contact the Sales department.



SHIRTS —

Shirts are a timeless classic that always goes in fashion. Elegant cuts and high-quality materials will give you confidence and natural charm. They are suitable not only for the office but also for social events. Choose your favourite shirt and enjoy endless possibilities for combining outfits.





JOURNEY 264, 265

Shirt men's · women's

M-3XL · S-2XL

Micro twill, 100 % cotton, easy care, 130 g/m²

- designed by leading czech tailor Roman Humlíček · yarn from extra long staple fibers
- back part with a double yoke and darts · long sleeves with round cuffs and 2 buttons
- men's: tailored fit cut with side seams · collar stays
- women's: tailored fit cut with side seams · front part with waist darts



TAILORED



EASY CARE



264
M-3XL

265
S-2XL

00 C6 C7





DYNAMIC 262, 263

Shirt men's · women's

S-2XL · S-2XL

men's: Plain weave, 60 % cotton, 40 % polyester, slim fit, 105 g/m²

women's: Plain weave, 68 % cotton, 29 % polyamid, 3 % elastane, 110 g/m²

- tailored fit cut with side seams
- men's: back part with a double yoke and darts · collar stays
- long sleeves with angled cuffs and 1 button
- women's: fine stretch fabric · back part with a double yoke · breast and waist darts
- long sleeves with angled cuffs and 2 buttons


NEW COLOUR





262
S-2XL

263
S-2XL

00 01 02 82


For further information about the delivery date of new arrivals, please contact the Sales department.



STYLE LS 209, 229

Shirt men's · women's
S-3XL · XS-2XL
Poplin, 100 % cotton, 125 g/m²

men's: regular fit cut with side seams · back part with a double yoke and folds · long sleeves with round cuffs and 1 button
· patch breast pocket · woman's: tailored fit cut with side seams · breast and waist darts · long sleeves with angled cuffs and 2 buttons



209
S-3XL

229
XS-2XL



STYLE 218

Shirt women's
S-2XL
Poplin, 100 % cotton, 125 g/m²

· tailored fit cut with side seams · back part with darts · breast and waist darts
· 3/4 sleeves with straight high cuffs and slits



218
S-2XL



For further information about the delivery date of new arrivals, please contact the Sales department.



CHIC 207, 214

Shirt men's · women's
 M-3XL · S-2XL
 Poplin, 100 % cotton, 120 g/m²

men's: regular fit cut with side seams · back part with a double yoke and folds · patch breast pocket
 woman's: back part with a single yoke and darts · waist darts · two-piece open-neck shirt collar



207
M-3XL

214
S-2XL



FLASH 260, 261

Shirt men's · women's
 S-2XL · S-2XL
 men's: Plain weave, 60 % cotton, 40 % polyester, slim fit, 105 g/m²
 women's: Plain weave, 68 % cotton, 29 % polyamid, 3 % elastane, 110 g/m²

· tailored fit cut with side seams
 men's: back part with a double yoke and darts · collar stays
 women's: fine stretch fabric · back part with a double yoke · breast and waist darts



260
S-2XL

261
S-2XL





SWEATSHIRTS AND SWEATPANTS —

Enter the world of comfort and style with our collection of sweatshirts and sweatpants. Choose from a wide range of cuts, colours and materials to suit your requirements. Whether you're heading out for sports or just strolling around town, our products give you maximum comfort with a modern look.





CHILL 422

Sweatshirt unisex
XS-4XL

French terry, inner brushed, 60 % cotton, 40 % polyester, 280 g/m²

- label free - ready for rebranding · loose cut with side seams · low cap sleeves
- kangaroo patch pocket · 2:2 rib knit bottom hem and cuffs with 5 % elastane · brushed inner side



422
XS-4XL



** Composition may differ - colour 12 - 75 % cotton, 25 % polyester
For further information about the delivery date of new arrivals, please contact the Sales department.*





MOON 420, 421

Sweatshirt men's · women's
S-3XL · XS-2XL

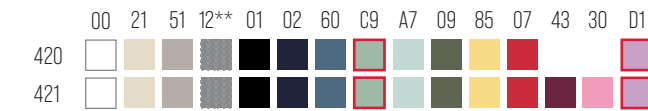
French terry, brushed inner side, 80 % cotton, 20 % recycled polyester, 280 g/m²

- loose cut with side seams · low cap sleeves · kangaroo welt pockets
- 2:2 rib knit bottom hem and cuffs with 5 % elastane



420
S-3XL

421
XS-2XL



SNAP 419

Dress women's
S-2XL

French terry, unbrushed inner side, 65 % cotton, 35 % polyester, 320 g/m²

- slight fit cut with side seams · above knee length · 1:1 rib knit bottom hem and cuffs with 5 % elastane



419
S-2XL



Material composition may differ: **colour 12 - 75 % cotton, 25 % viscose; *colour 12 - 85 % cotton, 15 % viscose
For further information about the delivery date of new arrivals, please contact the Sales department.



CAPE 413, 414

Sweatshirt men's · women's
S-5XL · XS-2XL

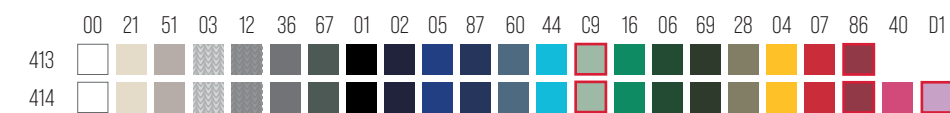
French terry, inner brushed, 65 % cotton, 35 % polyester, 320 g/m²

· 2:2 rib knit bottom hem and cuffs with 5 % elastane
men's: straight cut with side seams · woman's: slight fit cut with side seams



413
S-5XL

414
XS-2XL



413: 4XL size available in colours 01, 02, 04, 05, 07, 12; 5XL size available in colours 01, 02, 12
414: XS size available in colours 00, 01, 02, 05, 07, 12



CAPE FREE F13, F14

Sweatshirt men's · women's
S-3XL · S-2XL

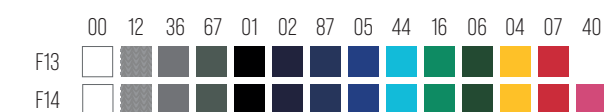
French terry, inner brushed, 65 % cotton, 35 % polyester, 320 g/m²

· label free - ready for rebranding · 2:2 rib knit bottom hem and cuffs with 5 % elastane
men's: straight cut with side seams · woman's: slight fit cut with side seams



F13
S-3XL

F14
S-2XL



For further information about the delivery date of new arrivals, please contact the Sales department.



RECYCLED POLYESTER

The fibers are made by recycling consumer plastics (PET bottles, plastic packages and other waste material). The advantage is the consumption of less energy during production and reduction of the carbon footprint.

BREAK 840, 841

Sweatshirt men's - women's

S-3XL - XS-2XL

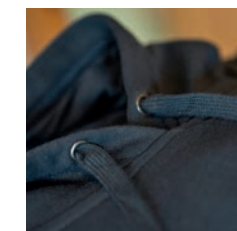
French terry, unbrushed inner side, 80 % cotton, 20 % recycled polyester, 280 g/m²

- recycled polyester · 2:2 rib knit bottom hem and cuffs with 5 % elastane
- Men's: straight cut with side seams · Woman's: slight fit cut with side seams



840
S-3XL

841
XS-2XL



* Material composition may differ: colour 12 - 70 % cotton, 30 % (GRS) recycled polyester



TRENDY ZIPPER 410, 411, 412

Sweatshirt men's · women's · kids
 S-3XL · XS-2XL · 6 years/122 cm-12 y./158 cm
 French terry, inner brushed, 65 % cotton, 35 % polyester, 300 g/m²

- full-length molded zipper · 2:2 rib knit bottom hem and cuffs with 5 % elastane
 men's/Kids: straight cut with side seams · woman's: slight fit cut with side seams



410
S-3XL

411
XS-2XL

412
6 years/122 cm-12 y./158 cm

	00	03	12	36	67	01	02	05	44	62	16	69	06	04	07	40
410	White	Grey	Dark Grey	Black	Black	Dark Blue	Blue	Cyan	Light Green	Green	Red	Dark Green	Yellow	Orange	Red	
411	White	Grey	Dark Grey	Black	Black	Dark Blue	Blue	Cyan	Light Green	Green	Red	Dark Green	Yellow	Orange	Red	Pink
412			Dark Grey			Black	Dark Blue	Blue	Cyan	Light Green	Green	Red			Red	

41: XS size available in colours 01, 02

For further information about the delivery date of new arrivals, please contact the Sales department.



VOYAGE 452, 451

Sweatshirt men's · women's
S-3XL · XS-2XL

French terry, unbrushed inner side, 100 % cotton, 320 g/m²

- full-length metal zipper · raglan sleeves with decorative stitching · 2:2 rib knit bottom hem and cuffs with 5 % elastane
- men's: straight cut with side seams · women's: slight fit cut with side seams



BOMBER 453, 454

Sweatshirt men's · women's
S-3XL · S-2XL

French terry, unbrushed inner side, 100 % cotton, 320 g/m²

- full-length metal zipper · 2:2 rib knit "bomber" collar with 5 % elastane
- dividing seam pockets with a hidden zipper · 2:2 rib knit bottom hem and cuffs with 5 % elastane
- men's: straight cut with side parts · women's: cut fitted by side parts



* Material composition may differ: Colour 12 - 85 % cotton, 15 % viscose

ADVENTURE 407 VIVA 409

Sweatshirt men's · women's
S-3XL · S-2XL

Men's: French terry, inner brushed, 65 % cotton, 35 % polyester, 300 g/m²
Woman's: French terry, inner brushed, 97 % cotton, 3 % polyester, 300 g/m²

- 2:2 rib knit stand up collar and side parts with 5 % elastane · 2:2 rib knit bottom hem, cuffs and pocket hems with 5 % elastane
- men's: straight cut with side parts · full-length metal zipper
- woman's: stretch fabric for better dimensional stability · cut fitted by side parts · full-length silver coil zipper



407
S-3XL

409
S-2XL



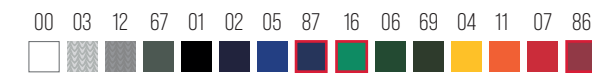
ESSENTIAL 406

Sweatshirt men's · kids
S-4XL · 4 years/110 cm, 12 y./158 cm
French terry, brushed inner side, 65 % polyester, 35 % cotton, 300 g/m²

- straight cut with side seams · 1:1 rib knit bottom hem, cuffs and neckline with 5 % elastane · brushed inner side



406
S-4XL, 4 years/110 cm, 12 y./158 cm



men's: 4XL size available in colours 01, 02, 12
kids: size available in colours 00, 03, 12, 67, 01, 02, 05, 87, 16, 06, 07, 86



ZERO P41

Sweatshirt unisex
XS-3XL
French terry, unbrushed inner side, 50 % cotton, 50 % polyester, 260 g/m²

- straight cut with side seams · 1:1 rib knit bottom hem, cuffs and neckline with 5 % elastane



P41
XS-3XL



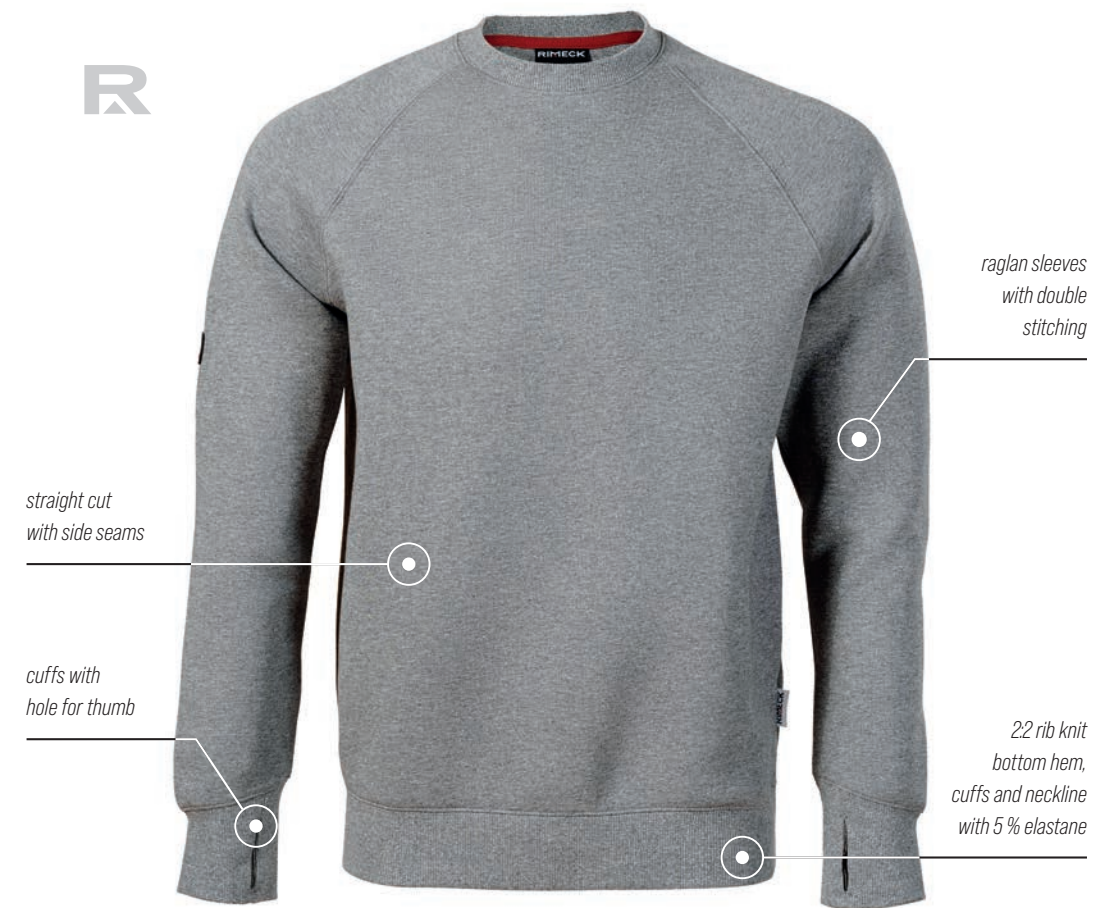
For further information about the delivery date of new arrivals, please contact the Sales department.



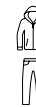
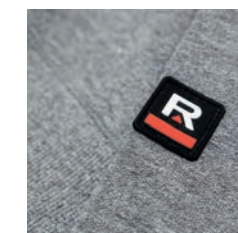
VERTEX ^{W42}

Sweatshirt men's
S-4XL

Double face interlock knit, 80 % cotton, 20 % polyester, 300 g/m²



12 94 01 93 23





VERTEX HOODIE W43

Sweatshirt men's
S-4XL

Double face interlock knit, 80 % cotton, 20 % polyester, 300 g/m²



straight cut
with side seams

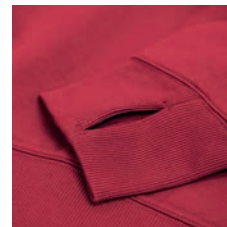
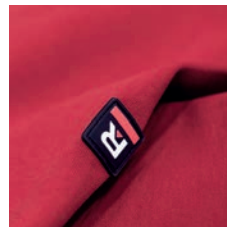
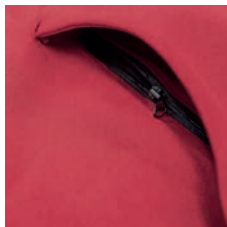
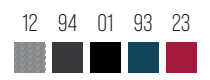
cuffs with
hole for thumb



raglan sleeves
with double
stitching

2 hidden
zipper pockets

22 rib knit
bottom hem,
cuffs and neckline
with 5 % elastane



DIRECT 417, 418

Stretch fleece men's · women's
S-3XL · S-2XL

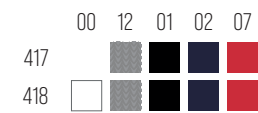
Stretch fleece, 95 % micro polyester, 5 % elastane, 240 g/m²

- smooth stretch quick-drying fabric · ideal for sport and leisure activities
- full-length reverse coil zipper · raglan sleeves
- men's: straight cut with side parts · women's: cut fitted by side parts



417
S-3XL

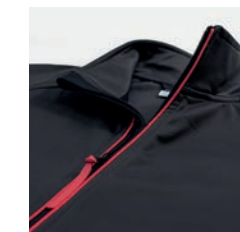
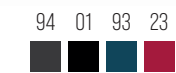
418
S-2XL



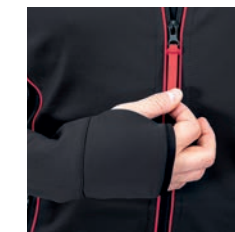
VERTEX W41

Stretch fleece men's
S-3XL

Stretch fleece, 95 % micro polyester, 5 % elastane, 280 g/m²



full-length reverse coil zipper
with chin protection



cuffs with hole for thumb



REST 614, 615

Sweatpants men's · women's
S-3XL · XS-2XL

French terry, unbrushed inner side, 80 % cotton, 20 % polyester, 280 g/m²

- ideal for sport and leisure activities · slightly narrowed leg cut · 2:2 rib knit waistband with 5 % elastane, adjustable by drawcord
- slant pockets · 2:2 rib knit bottom hem with 5 % elastane



614
S-3XL

615
XS-2XL



* Material composition may differ: colour 12 - 75 % cotton, 25 % viscose

LEISURE 603

Pants women's
S-2XL

Single Jersey, 95 % cotton, 5 % elastane, 200 g/m²

- stretch fabric for better dimensional stability · ideal for sport and leisure activities
- wide elastic waistband · slant pockets · bottom hem with elastic band



603
S-2XL



BALANCE 610

Leggings women's
XS-3XL

Single Jersey, 95 % cotton, 5 % elastane, 190 g/m²

- stretch fabric for better dimensional stability · ideal for sport and leisure activities
- slim fit cut without side seams · elastic waistband



610
XS-3XL



TWO IN ONE 604

Skirt women's
XS-XL

Single Jersey, 95 % cotton, 5 % elastane, 200 g/m²

- 2 in 1 - skirt with sewn-in shorts · stretch fabric for better dimensional stability
- ideal for sport and leisure activities · short cut in the "A" shape · wide elastic waistband, adjustable by drawcord



604
XS-XL



COMFY 611

Shorts men's
M-3XL

French terry, unbrushed inner side, 65 % cotton, 35 % polyester, 300 g/m²

- ideal for sport and leisure activities · elastic waistband, adjustable by drawcord
- side-seam welt pockets



611
M-3XL



*Material composition may differ: colour 12 - 80 % cotton, 15 % viscose, 5 % elastane

*Material composition may differ: colour 12 - 80 % cotton, 15 % viscose, 5 % elastane



FLEECE —

Fleece is a contemporary fabric with outstanding thermal insulation properties. It is becoming increasingly popular for sports and outdoor activities. Recycled PET bottles are frequently used in its production, which positively impacts the environment.





ANTIPELLING FINISH

Antipilling finish minimizes the release of fibers and prevents fabric's pilling. This process results in fibres fixation and stabilization. It reduces damaging of the upper part under excessive use and friction and extends the product lifetime and functionality.

FROSTY 527, 528, 529

Fleece men's · women's · kids
 S-4XL · S-3XL · 122 cm/6 years-158 cm/12 years
 Fleece, 100 % polyester, antipilling finish, 220 g/m²

- insulating fabric · full-length coil zipper with chin protection · pockets with coil zipper
- bottom hem adjustable by elastic drawstring · contrast elements · woman's: slight fit cut



527 S-4XL 528 S-3XL 529 122 cm/6 years-158 cm/12 years

	00	24	01	02	05	44	92	07	40
527	□	□	□	□	□	□	□	□	□
528	□	□	□	□	□	□	□	□	□
529			□	□		□		□	
	94	94	94	94	94	94	94	94	94

527: S size available in colours 00, 01





EXIT 525

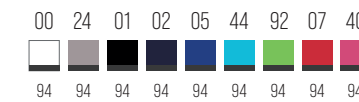
Fleece vest unisex
S-3XL

Fleece, 100 % polyester, antipilling finish, 220 g/m²

- insulating fabric · full-length coil zipper with chin protection · pockets with coil zipper · bottom hem adjustable by elastic drawstring
- contrast elements



525
S-3XL



NEXT 518

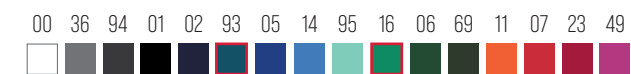
Fleece vest unisex
XS-4XL

Fleece, 100 % polyester, antipilling finish, 280 g/m²

- insulating fabric · full-length coil zipper
- welt pockets with coil zipper · bottom hem adjustable by elastic drawstring



518
XS-4XL



4XL size available in colours 00, 01, 02, 05, 23

For further information about the delivery date of new arrivals, please contact the Sales department.



JACKET 501, 504

Fleece men's · women's
S-4XL · XS-2XL

Fleece, 100 % polyester, antipilling finish, 280 g/m²

- insulating fabric · full-length molded zipper · pockets with molded zipper · bottom hem adjustable by elastic drawstring
- sleeve hems with elastic band · women's – slight fit cut



4XL size available in colours 01, 02, 05, 23, 94

JACKET HI-Q 506

Fleece unisex
S-3XL

Fleece, 100 % polyester, antipilling finish, Complementary material: Rip Stop, 100 % polyamide, inner PU coating, 360 g/m²

- highly insulating fabric · shoulders covered by a waterproof, abrasion-resistant fabric · full-length molded zipper
- pockets with molded zipper · bottom hem with elastic band · sleeve hems adjustable by velcro



For further information about the delivery date of new arrivals, please contact the Sales department.



EFFECT 530

Fleece unisex
S-3XL

Fleece, 100 % polyester, antipilling finish; complementary material: plain weave, 100 % polyamide, 360 g/m²

- highly insulating fabric · shoulders and elbows covered by a waterproof, abrasion-resistant fabric
- full-length molded zipper · pockets with molded zipper
- sleeves ended by cuffs · bottom hem adjustable by elastic drawstring



40
WASH

ANTIPELLING

530
S-3XL



CASUAL 550

Softshell jacket men's
S-3XL

Knitted softshell: 100 % polyester; micro fleece - 100 % polyester

Softshell: 96 % polyester, 4 % elastane; micro fleece - 100 % polyester, Lining: 100 % polyester, 350 g/m²

- 2-layer softshell · combination of knitted and plain fabric · full-length reverse coil zipper
- sleeve hems adjustable by velcro · pockets with reverse coil zipper · 2 inner pockets · contrast elements



30
WASH

SOFTSHELL

ANTIPELLING

550
S-3XL



OUTDOOR —

Softshell is a specialised material for outdoor clothing. Its characteristic combination of features, including water resistance, wind resistance, flexibility, and breathability, ensures comfort and freedom of movement in various weather conditions.





CROSS 555, 556

hybrid Jacket men's · women's
S-3XL · XS-2XL

Plain weave: 100 % polyamide, water repellent finish,
mid layer: 100 % polyester, Softshell: 90 % polyester, 10 % elastane,
water repellent finish; fleece: 100 % polyester, antipilling finish,
Softshell: 250 g/m²

- combination of quilted and softshell fabric · stand up collar with snap button
- full-length coil zipper · side pockets with coil zipper
- inner breast zip pocket · access for branding in back lining
- men's: cut with side parts
- women's: cut fitted by side parts



555
S-3XL

556
XS-2XL





CROSS 557, 558

hybrid Vest men's · women's
S-3XL · XS-2XL

Plain weave: 100 % polyamide, water repellent finish,
mid layer: 100 % polyester, Softshell: 90 % polyester, 10 % elastane,
water repellent finish; fleece: 100 % polyester, antipilling finish,
Softshell: 250 g/m²

- combination of quilted and softshell fabric · full-length coil zipper with chin protection
- side pockets with coil zipper · inner breast zip pocket · access for branding in back lining
- men's: cut with side parts
- women's: cut fitted by side parts

SOFTSHELL ELASTANE WATER REPELLENT WINDPROOF



557
S-3XL

558
XS-2XL

01 02 83 05
557
558



PHANTOM 540, 541

Jacket men's · women's
S-3XL · XS-2XL

Plain weave, 100 % polyester, water repellent finish
mid layer: 100 % polyester

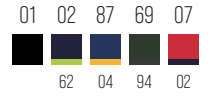
- foldable into the inner pocket · lightweight quilted warm fabric · full-length molded zipper with chin protection
- pockets with molded zipper · inner pocket with velcro · trimmed by elastic stripe · access for branding in side lining
- men's: cut with side parts · women's: cut fitted by side parts

 WINDPROOF  WATER REPELLENT



540
S-3XL

541
XS-2XL





EVEREST 552, 551

Jacket men's · women's
S-3XL · XS-2XL

Plain weave, micro fiber - 100 % polyamide, mid layer: 100 % polyester

- lightweight quilted warm fabric · full-length reverse coil zipper with chin protection · pockets with reverse coil zipper
- access for branding in back lining · trimmed by elastic stripe · contrast elements (except 01 colour) · women's: cut fitted by side parts



552
S-3XL

551
XS-2XL



EVEREST 553, 554

Vest men's · women's
S-3XL · XS-2XL

Plain weave, micro fiber - 100 % polyamide, mid layer: 100 % polyester

- lightweight quilted warm fabric · full-length reverse coil zipper with chin protection
- pockets with reverse coil zipper · access for branding in back lining · trimmed by elastic stripe
- contrast elements (except 01 colour) · women's: cut fitted by side parts



553
S-3XL

554
XS-2XL



PACIFIC 3 in 1 533, 534

Jacket men's · women's
S-3XL · XS-2XL

Upper jacket: plain weave, 100 % polyester, inner TPU white lamination, waterproof 8 000 mm, breathable 5 000 g/m²/24 h., 130 g/m²
Inner fleece: 100 % polyester, antipilling finish on both sides, 220 g/m²



· multipurpose use 3 in 1

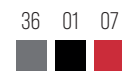
· Upper jacket:

- waterproof zipper with chin protection · removable hood with reinforced peak · hood and bottom hem adjustable by elastic drawstring
 - sleeve hems adjustable by velcro · welt pockets with reverse coil zipper · taped seams · access for branding inside lining
- Woman's: slight fit cut



533
S-3XL

534
XS-2XL



· Inner fleece:

- removable inner fleece jacket · full-length molded zipper · welt pockets · bottom hem adjustable by elastic drawstring



VERTEX W55

Winter softshell jacket men's
S-3XL

Softshell: 94 % polyester, 6 % elastane; TPU membrane;
Micro fleece: 100 % polyester, antipilling finish;
mid layer and lining: 100 % polyester, waterproof 10 000 mm, breathable 4 000 g/m²/24h, 320 g/m²



thermal reflective zone



inner breast zip pocket



hood and bottom hem adjustable by elastic drawstring



PERFORMANCE 522, 521

Softshell jacket men's · women's
S-4XL · XS-3XL

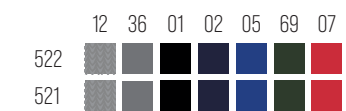
Softshell: 94 % polyester, 6 % elastane; TPU membrane; Micro fleece,
100 % polyester, waterproof 14 000 mm, breathable 2 000 g/m²/24h, 300 g/m²

- full-length reverse coil zipper with chin protection · removable hood · sleeve hems adjustable by velcro
 - bottom hem adjustable by elastic drawstring · pockets with reverse coil zipper · inner breast zip pocket with access for branding
- women's: slight fit cut



522
S-4XL

521
XS-3XL



522: 4XL size available in colours 01, 02, 05, 07, 36
521: 3XL size available in colours 01, 02, 07



NANO 531, 532

Softshell jacket men's · women's
S-3XL · XS-2XL

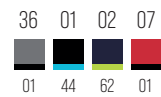
Softshell: 100 % polyester, Nanotex® finish; TPU membrane; perforated micro fleece,
96 % polyester, 4 % elastane, waterproof 5 000 mm, breathable 600 g/m²/24h, 280 g/m²

- impressive softshell texture · full-length coil zipper with flap · drawstring hood · hood and sleeve hems adjustable by velcro
- pockets with reverse coil zipper · contrast elements · Woman's: slight fit cut



531
S-3XL

532
XS-2XL



NANOTEX®
RESIST

NANOTEX RESIST

Certified fabric which has been fundamentally transformed through nanotechnology. The resulting fabric repels liquids, thus extending the lifetime of the jacket and helping it retain the natural softness and breathability. When a liquid comes into contact with the fabric, rather than sinking into the fibers, the fluid beads roll right off the surface without leaving a mark.

RAINBOW 538, 539

Jacket men's · women's
S-3XL · XS-2XL

Plain weave, 100 % polyester, TPU membrane, BIONIC FINISH® ECO hydrophobic finish,
waterproof 5 000 mm, breathable 3 000 g/m²/24h, 105 g/m²

Lining: mesh, 100 % polyester

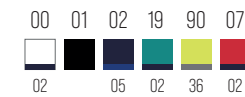
- lightweight waterproof fabric with membrane · waterproof zipper with chin protection · removable drawstring hood
- sleeve hems adjustable by velcro · side pockets with reverse coil zipper · inner chest pocket with velcro
- taped seams · access for branding in side lining · the lower side hem with elastic band
- ventilation at the back part · reflective elements
- men's: cut with side parts · women's: cut fitted by side parts



538
M-3XL



539
S-2XL



COOL 515, 514

Softshell jacket men's · women's
S-3XL · S-2XL
Softshell: 100 % polyester, TPU membrane, waterproof 5 000 mm,
breathable 2 000 g/m²/24h, 210 g/m²

- full-length reverse coil zipper · hood and bottom hem adjustable by elastic drawstring · sleeve hems adjustable by velcro
 - welt pockets with reverse coil zipper · breast pocket with the zip hidden in the dividing seam
- women's: slight fit cut



VISION 517, 516

Softshell vest men's · women's
S-3XL · XS-2XL
Softshell: 94 % polyester, 6 % elastane; Fleece: 100 % polyester, 280 g/m²

- full-length coil zipper with chin protection · bottom hem adjustable by elastic drawstring · zip pockets hidden in dividing seams
- women's: slight fit cut



WINDY 524

Coat unisex
S-2XL
Plain weave, 100 % polyester, PA finish

- lightweight windproof fabric · full-length coil zipper · hidden hood in the collar
- hood and bottom hem adjustable by elastic drawstring · welt pockets · folds into separate small bag for easy carry



BODY WARMER 509

Men's vest
S-4XL
Rip Stop, 100 % polyamide, inner silver coating;
lining: Fleece, 100 % polyester, antipilling finish, 300 g/m²

- full-length molded zipper with chin protection · bottom hem adjustable by elastic drawstring
- inner pocket with velcro · access for branding in side lining · contrast elements





ACTIVE —

We are all active in different ways. Some of us go for a run, others practice yoga, and some of us hike in the mountains. However, one thing we have in common is clothing made from quick-drying and breathable materials.



FANTASY 124, 140, 147

T-shirt men's · women's · kids
 S-3XL · XS-2XL · 6 years/122 cm-12 y./158 cm
 Interlock pique, 100 % polyester, 150 g/m²

- quick-drying fabric · ideal for sport and leisure activities
- men's/kids: cut with side seams · unusually designed neckline
- women's: slim fit cut with side seams · narrow neckline hem from shell fabric



124
S-3XL

140
XS-2XL

147
6 years/122 cm-12 y./158 cm

	00	01	02	05	70	44	95	92	16	69	09	90	04	88	91	07	89	64	
124	□	■	■	■	■	■	■	■	■	■	■	■	■	■	■	■	■	■	■
140	□	■	■	■	■	■	■	■	■	■	■	■	■	■	■	■	■	■	■
147	□	■	■	■	■	■	■	■	■	■	■	■	■	■	■	■	■	■	■

140: XS size available in colours 00, 01

For further information about the delivery date of new arrivals, please contact the Sales department.

CHANCE 810, 811

T-shirt men's · women's
S-3XL · XS-2XL

Interlock pique, 100 % recycled micro polyester, 140 g/m²

- quick-drying fabric · ideal for sport and leisure activities · flat shoulder seams · decorative stitching · narrow neckline hem from shell fabric
- men's: cut with side seams · woman's: loose cut with side seams



810
S-3XL

811
XS-2XL



811: XS size available in colours 00, 01



BREEZE 820

Top men's
S-2XL

Interlock pique, 100 % polyester, 150 g/m²

- quick-drying fabric · ideal for sport and leisure activities · cut with side seams
- neckline hem from shell fabric · armholes trimmed with shell fabric



820
S-2XL



PIXEL P81

T-shirt unisex
XS-3XL

Double Face, 100 % polyester, 130 g/m²

- smooth quick-drying fabric · ideal for sport and leisure activities
- cut with side seams · 1:1 rib knit neckline hem



P81
XS-3XL



XS only in colour 00



VICTORY 217

Unisex polo shirt
S-3XL

Interlock pique, 100 % polyester, 150 g/m²

- quick-drying fabric · ideal for sport and leisure activities · cut with side seams · 1:1 rib knit collar



217
S-3XL



3XL size available in colours 00, 01, 02

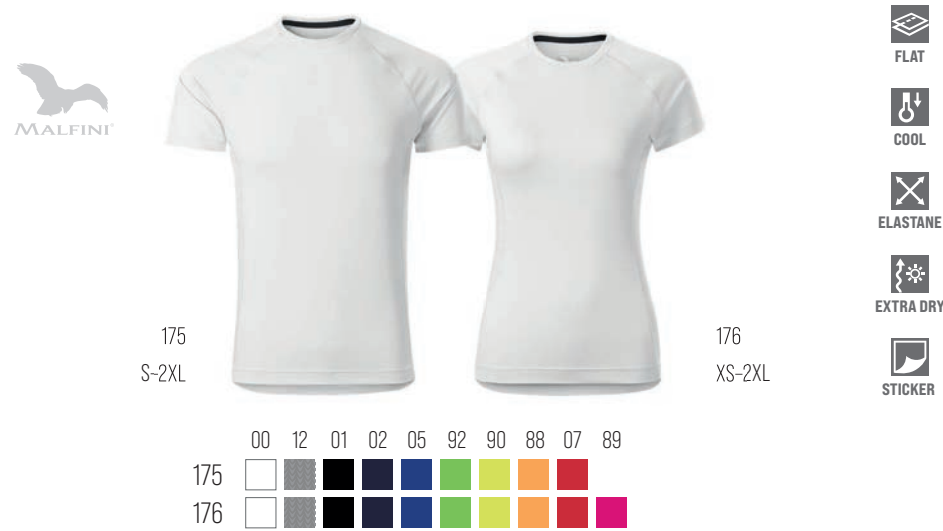


DESTINY 175, 176

T-shirt men's · women's
S-2XL · XS-2XL

Single Jersey, 95 % micro polyester, 5 % elastane, 160 g/m²

- smooth stretch quick-drying fabric · ideal for sport and leisure activities · slim fit cut with side parts
- decoratively stitched flat seams · curved and slightly prolonged back part · narrow neckline hem from shell fabric
- removable sticker label



MILES 612, 613

Shorts men's · kids

S-3XL · 6 years/122 cm-12 y./158 cm

Interlock pique, 100 % micro polyester, 150 g/m²

- quick-drying fabric · ideal for sport and leisure activities · elastic waistband, adjustable with drawcord
- small inner pocket · side-seam pockets

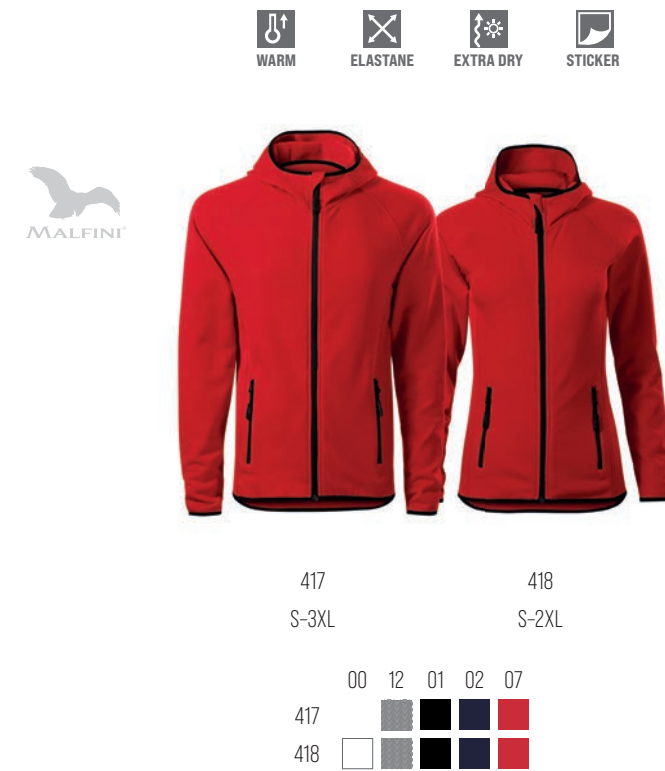


DIRECT 417, 418

Stretch fleece men's · women's
S-3XL · S-2XL

Stretch fleece, 95 % micro polyester, 5 % elastane, 240 g/m²

- smooth stretch quick-drying fabric · ideal for sport and leisure activities
- full-length reverse coil zipper · raglan sleeves
- men's: straight cut with side parts · women's: cut fitted by side parts





ACCESSORIES —

Our range includes clothing and high-quality and practical accessories to make your everyday life easier.



BEANIE 315

unisex
Rib knit, 100 % polyacrylic, 66 g

- double-layered 1:1 rib knit
- insulating fabric
- shaped by stitching
- folded bottom edge 7 cm wide



315



RAP 5P 301

Cap unisex
adjustable
Twill, 100 % cotton, 340 g/m²

- stitched flat peak · embroidered air holes · sweatband
- size adjustable by plastic pressbuttons · bonded front panel



301



For further information about the delivery date of new arrivals, please contact the Sales department.



5P 307

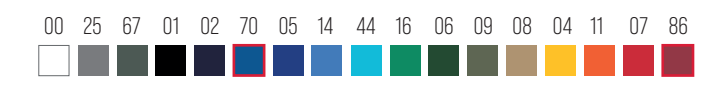
Cap unisex
adjustable

Brushed twill, 100 % cotton, 340 g/m²

- bonded front panel · stitched, slightly curved peak · embroidered air holes
- sweatband · size adjustable by brass clip



307



6P 305

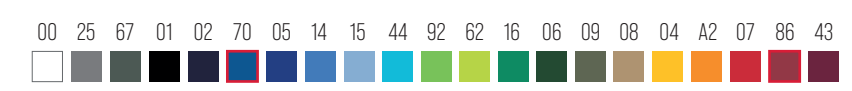
Cap unisex
adjustable

Brushed twill, 100 % cotton, 340 g/m²

- bonded 2 front panels · stitched, slightly curved peak · embroidered air holes
- sweatband · size adjustable by brass clip



305



For further information about the delivery date of new arrivals, please contact the Sales department.



SUNSHINE P31

Cap unisex
adjustable
Twill, 100 % cotton, 155 g/m²

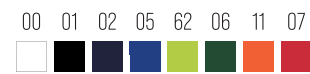
- bonded 2 front panels · stitched, slightly curved peak
- embroidered air holes · sweatband
- size adjustable by velcro



P



P31



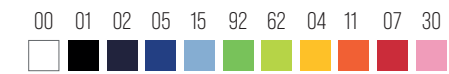
6P KIDS 303

Cap kids
adjustable
Brushed twill, 100 % cotton, 340 g/m²

- bonded 2 front panels · stitched, slightly curved peak · embroidered air holes
- sweatband · size adjustable by velcro



303



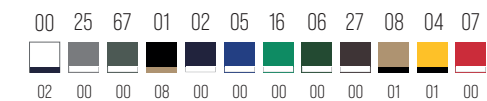
SANDWICH 6P 306

Cap unisex
adjustable
Brushed twill, 100 % cotton, 340 g/m²

- bonded 2 front panels · stitched, slightly curved peak with a contrast stripe
- embroidered air holes · sweatband · size adjustable by brass clip



306





CLASSIC 304

Hat unisex

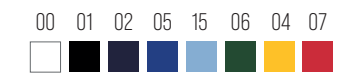
uni · circumference 61 cm

Brushed twill, 100 % cotton, 260 g/m²

· embroidered air holes · sweatband · trimmed inner seams



304



TWISTER 328

Scarf unisex/kids

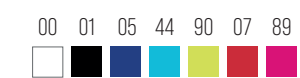
uni · 50 × 26 cm

Single Jersey, 100 % polyester, 135 g/m²

· tubular cut · quick-drying fabric



328





CARRY 901

Shopping bag

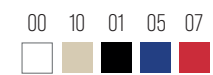
uni · bag dimension 42 x 38 cm

Plain weave, 100 % cotton, 280 g/m²

· cut with side parts · cross stitching on straps for higher durability · straps 70 x 2,5 cm



901



SHOPPER 921

Shopping bag

uni · bag dimension 45 x 40 cm

Plain weave, 100 % cotton, 195 g/m²

· cross stitching on straps for higher durability · straps 70 x 2,5 cm



921



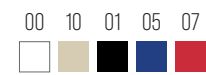
HANDY 900

Shopping bag

uni · bag dimension 42 x 38 cm

Plain weave, 100 % cotton, 90 g/m²

- cross stitching on straps for higher durability · straps 60 x 2,5 cm



900

ENERGY 912

Gymsack unisex/kids

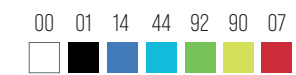
uni · gymsack dimension 45 x 34 cm

Oxford, 100 % polyester, 70 - 80 g/m²

- 2 polyester drawstrings in 01 colour · reflective elements in lower corners · interior zip pocket 20 x 23 cm



912



EASYGO 922

Gymsack unisex/kids

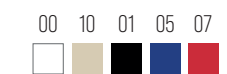
uni · gymsack dimension 47 x 37 cm

Plain weave, 100 % cotton, 195 g/m²

- 2 drawstrings from polyester in shell colour · reinforcement of corners with double material and metal rings
- interior zip pocket 20 x 23 cm



922



ORGANIC TOWEL 916, 917, 918

Hand towel · towel · bath towel

30 × 50 cm, bordure: 3,5 cm, 1,5 cm · 50 × 100 cm, bordure: 3,5 cm, 1,5 cm · 70 × 140 cm, bordure: 3,5 cm, 1,5 cm
Terry, 100 % organic cotton GOTS, 450 g/m²

- certified organic cotton · heavy weight woven terry · decorative double bordure
- soft and highly absorbent fabric · label useful as a hanging loop · gift suitable for embroidery



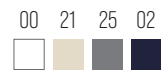
916



917



918



Certified by Intertek
149203

TOWEL 450 903, 905

Towel · bath towel

50 × 100 cm, bordure 3,5 cm · 70 × 140 cm, bordure 3,5 cm
Terry, 100 % cotton, 450 g/m²

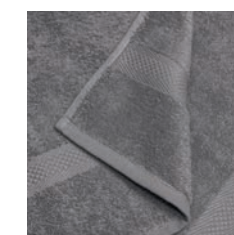
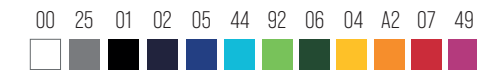
- heavy weight cotton woven terry · decorative bordure on both sides
- soft and absorbent fabric · label useful as a hanging loop
- gift suitable for embroidery



903



905





BAMBOO FIBER

Fiber made of bamboo based on regenerated cellulose. It has thermoregulatory, antibacterial, antimycotic and antistatic properties. Bamboo fiber is stronger along with three times higher absorbency than cotton, resistant to frequent washing and keeps its properties for a long time. We do not recommend using fabric softener in order not to reduce absorbency of the material.

BAMBOO TOWEL ⁹⁵¹ BAMBOO BATH TOWEL ⁹⁵²

Towel · Bath Towel
50 x 100 cm · 70 x 140 cm · bordure: 7,5 cm
Terry, 70 % viscose (bamboo), 30 % cotton, 450 g/m²

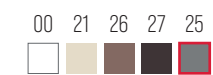
- heavy weight bamboo woven terry
- decorative bordure with satin yarns
- soft and highly absorbent fabric
- label useful as a hanging loop
- luxury gift suitable for embroidery



951



952





RIMECK®

WORKWEAR MADE REAL

The RIMECK® brand effectively melds the rigorous demands of workwear with the latest fashion trends. Our products not only look great but also withstand the rigours of everyday wear. Each piece must satisfy four essential criteria - striking design, meticulous craftsmanship, top-quality materials, and a primary focus on your safety. Rest assured, we are committed to this principle.



VERTEX

LUXURY COLLECTION BY RIMECK®

The VERTEX collection combines technologically advanced fibers, comfort and an outdoor look. Workwear can thus be highly durable, flexible and stylish at the same time!



CERTIFICATION - W07

EN ISO 13688:2013/A:2021 - Protective Plaining - this international standard specifies the general requirements for the implementation of protective workwear in terms of ergonomics, safety, size designation, wearout, marking of protective Plaining and the information which is supplied by the protective Plaining manufacturer.

EN 14404:2004+A1:2010 - Personal protective equipment - Knee pads for kneeling work - The standard specifies requirements for knee protection for kneeling work where there is a risk of injury due to surface mechanical effects. The protectors must be harmless to health and safe for the users.



WATER RESISTANT TREATMENT (W55, W56)

The waterproof TPU membrane resists moisture penetration very well while maintaining the flexibility of the entire material. Water column 10 000 mm.



BREATHABLE MATERIAL (W55, W56)

The 3-layer material helps to regulate water vapour, reliably moving it away from the body and creating a feeling of comfort. Breathability of 4,000 g/m²/24 hours.



THERMAL REFLECTIVE ZONE (W55, W56)

Thermo reflective zone on the back.



ANTI-SOILING FINISH (W07)

The ability of the top material to repel liquid, dirt and greasy dirt.



CORDURA (W07)

The use of CORDURA® material makes the trousers even more resistant, especially against punctures or tearing.



VERTEX^{W55}

Winter softshell jacket men's
S-3XL

Softshell: 94 % polyester, 6 % elastane; TPU membrane;
Micro fleece: 100 % polyester, antipilling finish;
mid layer and lining: 100 % polyester, waterproof 10 000 mm, breathable 4 000 g/m²/24h, 320 g/m²



ELASTANE



ANTIPILLING



SOFTSHELL



WINDPROOF



WATERPROOF



BREATHABLE



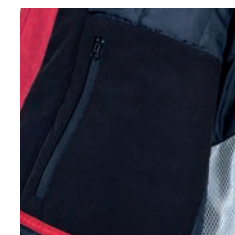
WASH



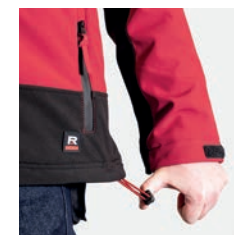
94 01 23



thermal reflective zone



inner breast zip pocket



hood and bottom hem
adjustable by elastic drawstring



VERTEX^{W07}

Work trousers men's
44-62; prolonged - 48-58

Oxford, 66 % polyamide, 34 % cotton, anti-soiling finish,
100 % polyamid CORDURA® 310 g/m², 210 g/m² CORDURA®



anti-soiling finish

highly resistant material
CORDURA® in colour 01

EN ISO 13688/A1
EN 14404 + A1
(type 2, only with A99)

curved elastic waistband

hammer loop

crotch gusset with 6 % elastane

contrast elements

back knee ventilation

pants can be lengthened



94 01



SHIELD^{A99}

Knee pads can be found
on page 225



knee pads pockets



10 multifunctional pockets



VERTEX^{W41}

Stretch fleece men's
S-3XL

Stretch fleece, 95 % micro polyester, 5 % elastane, 280 g/m²



WARM



ELASTANE



EXTRA DRY



WASH

full-length reverse
coil zipper with chin
protection

straight cut
with side seams

cuffs with
hole for thumb

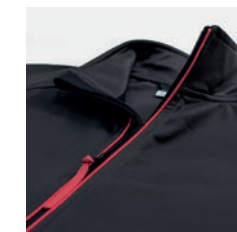
smooth stretch
quick-drying fabric

raglan sleeves

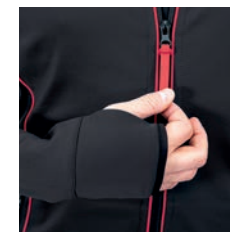
zip pockets



94 01 93 23



full-length reverse coil zipper
with chin protection



cuffs with hole for thumb



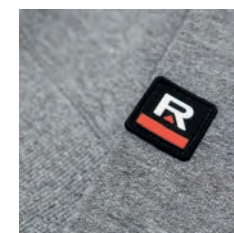
VERTEX ^{W42}

Sweatshirt men's
S-4XL

Double face interlock knit, 80 % cotton, 20 % polyester, 300 g/m²



12 94 01 93 23





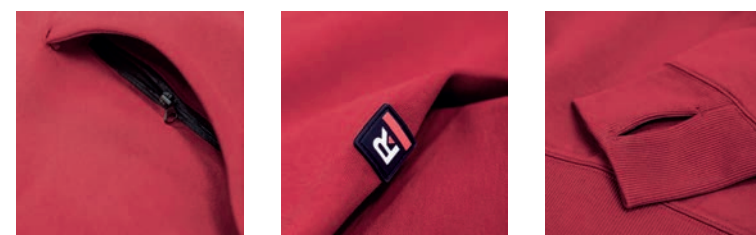
VERTEX HOODIE ^{W43}

Sweatshirt men's
S-4XL

Double face interlock knit, 80 % cotton, 20 % polyester, 300 g/m²



12 94 01 93 23





WOODY W02

Work bib trousers men's
44/46, 48/50, 52/54, 56/58, 60/62
Twill, 100 % cotton, 270 g/m²

- waistband with elastic back · 8 multifunctional pockets
- double stitching for extra durability · retroreflective elements



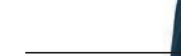
*adjustable elastic
braces*



*side with button
fastener*



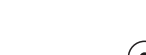
*multifunctional p
ockets - for a phone,
pens, personal items*



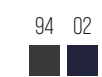
loop for a hammer



*double-layer material
around the knees
and buttocks*



W02
44/46, 48/50, 52/54, 56/58, 60/62



WOODY W51, W01

Jacket men's · Work trousers
44/46, 48/50, 52/54, 56/58, 60/62
Twill, 100 % cotton, 270 g/m²

- jacket: full-length molded zipper with flap · folds on the back part
· 8 multifunctional pockets · rib knit sleeve cuffs with 3 % elastane
· the lower side hem with elastic band · double stitching for extra durability · retroreflective elements

- work trousers: waistband with elastic sides · 7 multifunctional pockets
· plastic D-ring and carabiner for keys and ID cards · double stitching for extra durability
· retroreflective elements



W51
44/46, 48/50, 52/54, 56/58, 60/62



W01
44/46, 48/50, 52/54, 56/58, 60/62

WOODY W52, W05

Work vest men's · Shorts
44/46, 48/50, 52/54, 56/58, 60/62
Twill, 100 % cotton, 270 g/m²

- work vest: full-length molded zipper with flap · folds on the back part · 8 multifunctional pockets
· the lower side hem with elastic band · double stitching for extra durability · retroreflective elements

- shorts: waistband with elastic sides · 7 multifunctional pockets
· double stitching for extra durability · retroreflective elements



W52
44/46, 48/50, 52/54, 56/58, 60/62



W05
44/46, 48/50, 52/54, 56/58, 60/62

RESIST R01, R02

T-shirt men's · women's
S-4XL · S-3XL

Single Jersey, 100 % pre-shrunk cotton, 160 g/m²

- pre-shrunk cotton resistant to higher temperatures · neckline trimmed with 1:1 rib knit fabrics
- men's: cut with side seams
- women's: slight fit cut with side seams

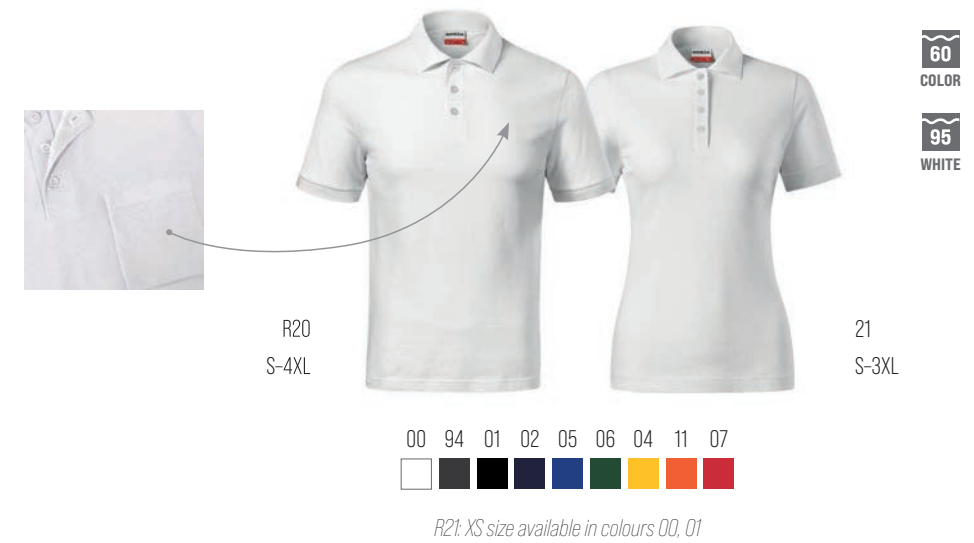


RESIST HEAVY POLO R20, R21

Polo shirt men's · women's
S-4XL · XS-3XL

Pique, 100 % pre-shrunk cotton, 200 g/m²

- preshrunk cotton resistant to higher temperatures · 1:1 rib knit collar and sleeve hems · separated pocket for easy branding
- men's: cut with slits in the side seams · women's: slight fit cut with slits in side seams



RESIST HEAVY R03, R04

T-shirt men's · women's
S-4XL · S-3XL

Single Jersey, 100 % pre-shrunk cotton, 200 g/m²

- pre-shrunk cotton resistant to higher temperatures · neckline trimmed with 1:1 rib knit fabric
- men's – cut with side seams · women's – slight fit cut with side seams



RESIST LS R05

T-shirt unisex
S-3XL

Single Jersey, 100 % pre-shrunk cotton, 160 g/m²

- pre-shrunk cotton resistant to higher temperatures · cut with side seams
- neckline trimmed with 1:1 rib knit fabric · 1:1 rib knit cuff





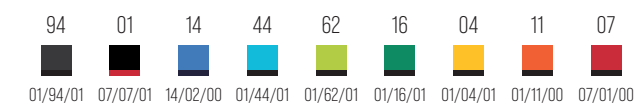
COLORMIX 109

T-shirt unisex
S-4XL
Single Jersey, 100 % cotton, 200 g/m²

- cut with side seams
- 1:1 rib knit neckline hem with 5 % elastane



109
S-4XL



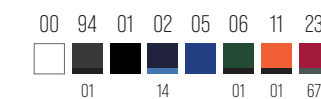
STREET LS 130

T-shirt unisex
S-4XL
Single Jersey, 100 % cotton, 180 g/m²

- cut with side seams · narrow 1:1 rib knit neckline hem with 5 % elastane
- 1:1 rib knit cuff with 5 % elastane



130
S-4XL



BASE R06

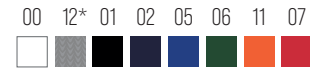
T-shirt unisex
S-6XL

Single Jersey, 100 % cotton, 160 g/m²

· durable, ideal for work environment · tubular cut · 1:1 rib knit neckline hem



R06
S-6XL



6XL size available in colours 00, 01

RECALL R07

T-shirt unisex
S-6XL

Single Jersey, 100 % cotton, 200 g/m²

· durable, ideal for work environment · tubular cut · 1:1 rib knit neckline hem with 5 % elastane



R07
S-6XL



6XL size available in colours 00, 01

RESERVE R22, R23

Polo shirt men's · women's
S-3XL · XS-2XL

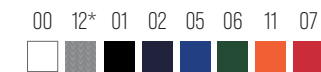
Pique, 65 % cotton, 35 % polyester, 200 g/m²

· durable, ideal for work environment · 1:1 rib knit collar and sleeve hems with double relief stripe
men's: cut with side seams · women's: slight fit cut with side seams



R22
S-3XL

R23
XS-2XL



R23: XS size available in colours 00

* Material composition may differ: colour 12 - 85 % cotton, 15 % viscose

* Material composition may differ: colour 12 - 85 % cotton, 15 % viscose

JACKET 501, 504

Fleece men's · women's
S-4XL · XS-2XL

Fleece, 100 % polyester, antipilling finish, 280 g/m²

- insulating fabric · full-length molded zipper · pockets with molded zipper · bottom hem adjustable by elastic drawstring
- sleeve hems with elastic band · women's: slight fit cut



4XL size available in colours 01, 02, 05, 23, 94

EFFECT 530

Fleece unisex
S-3XL

Fleece, 100 % polyester, antipilling finish; complementary material: plain weave, 100 % polyamide, 360 g/m²

- highly insulating fabric · shoulders and elbows covered by a waterproof, abrasion-resistant fabric
- full-length molded zipper · pockets with molded zipper
- sleeves ended by cuffs · bottom hem adjustable by elastic drawstring



JACKET HI-Q 506

Fleece unisex
S-3XL

Fleece, 100 % polyester, antipilling finish, Complementary material: Rip Stop, 100 % polyamide, inner PU coating, 360 g/m²

- highly insulating fabric · shoulders covered by a waterproof, abrasion-resistant fabric · full-length molded zipper
- pockets with molded zipper · bottom hem with elastic band · sleeve hems adjustable by velcro



For further information about the delivery date of new arrivals, please contact the Sales department.

CASUAL 550

Softshell jacket men's
S-3XL

Knitted softshell: 100 % polyester; micro fleece - 100 % polyester
Softshell: 96 % polyester, 4 % elastane; micro fleece - 100 % polyester; Lining: 100 % polyester, 350 g/m²

- 2-layer softshell · combination of knitted and plain fabric · full-length reverse coil zipper
- sleeve hems adjustable by velcro · pockets with reverse coil zipper · 2 inner pockets · contrast elements





RIP STOP

Very strong, regularly repeating weave. In this smooth fabric, thick warp and weft threads are interwoven in intervals of 5-8 mm. The surface gets an effect of a grided structure. This apparent grid significantly increases the fabric's resistance to ripping and tearing.

NEXT 518

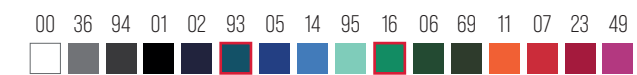
Fleece vest unisex
XS-4XL

Fleece, 100 % polyester, antipilling finish, 280 g/m²

- insulating fabric · full-length coil zipper
- welt pockets with coil zipper · bottom hem adjustable by elastic drawstring



518
XS-4XL



4XL size available in colours 00, 01, 02, 05, 23

BODY WARMER 509

Vest unisex
S-4XL

Rip Stop, 100 % polyamide, inner silver coating;
lining: Fleece, 100 % polyester, antipilling finish, 300 g/m²

- full-length molded zipper with chin protection · bottom hem adjustable by elastic drawstring
- inner pocket with velcro · access for branding in side lining · contrast elements



509
S-4XL



For further information about the delivery date of new arrivals, please contact the Sales department.



SEGMENTED STRIPES

Retroreflexive stripes are used to improve visibility during night and bad optical conditions. They are designed for use on safety clothes, with flexibility in mind, preserving full range of motion. These stripes are thermally applied, and can handle washing very well.

HV DROP 5V3

Softshell jacket unisex
M-4XL

Softshell: 100 % polyester; breathable membrane; micro fleece, 100 % polyester
waterproof 14 000 mm, breathable 2 000 g/m²/24h, 300 g/m²

- high visibility clothing in two-colour design · waterproof, breathable, fluorescent fabric
 - segmented retroreflective bands · back part with a yoke
- full-length reverse coil zipper with chin protection · sleeve hems adjustable by velcro
- welt pockets with reverse coil zipper · inner breast zip pocket with access for branding
 - bottom hem adjustable by elastic drawstring · hanging loop



5V3
M-4XL

97 98

EN ISO 20471
EN ISO 13688





HV GUARD 4 IN 1^{5V2}

Jacket unisex

M-4XL

Upper jacket: Oxford, 100 % polyester with PU finish, retroreflective bands 3M, 210 g/m²

Inner fleece: Polar fleece, 100 % polyester, retroreflective bands 3M, antipilling finish on both sides, 280 g/m²

· high visibility clothing · multipurpose use 4 in 1 in two-colour design



5V2
M-4XL

Upper jacket:

- waterproof, breathable, fluorescent fabric · full-length molded zipper with flap
- removable hood with reinforced peak, hidden in the collar
- hood and bottom hem adjustable by elastic drawstring
- removable sleeves · sleeve hems with elastic band, adjustable with velcro
- multifunctional pockets · taped seams · access for branding in back lining



EN 343+A1, EN ISO 20471, EN ISO 13688

Innerfleece:

- removable inner fleece jacket · insulating fluorescent fabric
- full-length molded zipper · pockets with molded zipper
- trimmed by elastic stripe



EN ISO 20471, EN ISO 13688

HV ESSENTIAL 4V6

Sweatshirt unisex
M-3XL

French terry, brushed inner side, 100 % polyester, retroreflective bands 3M, 300 g/m²

- high visibility clothing · straight cut with side seams · 1:1 rib knit bottom hem, cuffs and neckline



4V6
M-3XL

97 98



HV DRY 1V8

T-shirt unisex
S-3XL

Grid knit, 100 % polyester, segmented retroreflective bands, 150 g/m²

- quick-drying fluorescent fabric · segmented retroreflective bands · cut with side seams · 1:1 rib knit neckline hem



1V8
S-3XL

97 98



HV FLEECE JACKET 5V1

Fleece unisex
M-3XL

Fleece, 100 % polyester, antipilling finish, retroreflective bands 3M, 280 g/m²

- high visibility clothing · insulating fluorescent fabric · full-length molded zipper in 01 colour
- welt pockets with molded zipper · bottom hem adjustable by elastic drawstring · sleeve hems with elastic band



5V1
M-3XL

97 98



HV PROTECT 1V9

T-shirt unisex
S-3XL

Interlock pique, 55 % cotton, 45 % polyester, retroreflective bands 3M, 175 g/m²

- fluorescent polyester on the outer side · cotton on the inner side
- cut with side seams · 1:1 rib knit neckline hem



1V9
S-3XL

97 98



HV RUNWAY 2V9

Polo unisex
S-3XL

Interlock pique, 55 % cotton, 45 % polyester, retroreflective bands 3M, 175 g/m²

- high visibility clothing · fluorescent polyester on the outer side · cotton on the inner side
- cut with side seams · 1:1 rib knit collar with a contrast stripe



2V9
S-3XL

97 98

 **EN ISO 20471**
EN ISO 13688

40
WASH

HV BRIGHT 9V3

Safety vest unisex

M (FH 160 - 176 cm), 2XL (FH 184 - 192 cm)

Warp knit, 100 % polyester, retroreflective bands, 120 g/m²

- high visibility clothing · velcro fastening · trimming in 01 colour · retroreflective bands



9V3
M (VP 160 - 176 cm), 2XL (VP 184 - 192 cm)

97 98

 **EN ISO 20471**
EN ISO 13688

40
WASH

HV REFLEX 3V5

Cap unisex
adjustable

Twill, 50 % cotton, 50 % polyester, 240 g/m²

- quick-drying fluorescent fabric · bonded 2 front panels · stitched, slightly curved peak
- embroidered air holes · sweatband · size adjustable by velcro



3V5

97



 EXTRA DRY

SHIELD A99

Knee pads unisex

uni · 170 x 240 mm (can be shortened) · 1 pcs. = 1 pair


100 % polyethylene

- light, ergonomically shaped · usable into the knee pockets
- suitable for work when kneeling · anti-penetration protection



A99

01

 **EN 14404 + A1**
(type 2 only with W07)



CERTIFICATION of RIMECK work clothes

Selected garments from the collection HIGH VISIBILITY (HV) Rimeck correspond to the international standards, which determine the optimal form of protective Plaining with high visibility. Certified garments from the HV collection are supplied with a leaflet providing information on proper storage, treatment and purpose.

EN ISO 20471:2013 – High visibility Plaining – this international standard specifies requirements for Plaining with high visibility, which is able to visually indicate the presence of a user for vehicles or other mechanized means of transport under any light conditions, both in daylight and when illuminated by headlights of vehicles at night.

High visibility Plaining are made of fluorescent material, and in combination with reflective stripes are divided into three categories:

 **Category 3** – the highest level of protection – the minimum required substrate surface is 0.80 m² and 0.20 m² of retroreflective material.

 **Category 2** – the medium level of protection – the minimum required substrate surface is 0.50 m² and 0.13 m² of retroreflective material.

 **Category 1** – the minimum level of protection – the minimum required substrate surface 0.14 m² and 0.10 m² of retroreflective material.


EN 1150:1999 – Protective Plaining – caution Plaining with high visibility for non-professional use – standard specifies requirements for optical properties of caution high visibility Plaining suitable for adults or teenagers, not for professionals. The garments are designed for visual indication of the presence of users in all light conditions, both in daylight in urban lighting and when illuminated by headlights of vehicles at night.

EN 343:2003+A1:2007 – Protective clothes – Rain protection – European standard determining the properties of fabrics and seams of a protective garment. The characteristics of these are measured for the outside of the clothes. After achieving the specific permeability requirements and reaching the appropriate certification, it provides protection against water penetration and resistance against steam penetration for the wearer.

EN ISO EN ISO 13688:2013/A1:2021 – Protective Plaining – this international standard specifies the general requirements for the implementation of protective workwear in terms of ergonomics, safety, size designation, aging, marking of protective Plaining and the information which is supplied by the protective Plaining manufacturer.

EN 14404:2004+A1:2010 – Personal protective equipment – Knee pads for kneeling work – The standard specifies requirements for knee protection for kneeling work where there is a risk of injury due to surface mechanical effects. The protectors must be harmless to health and safe for the users.

TYPE 2 – foam plastic or other filling material in trouser pockets, or permanently attached to trousers.

 **LEVEL 0** – only suitable for use on a flat surface – does not protect against punctures

 **LEVEL 1** – suitable for use on flat or uneven surfaces – protection against puncture with a force of at least 100 ± 5 N

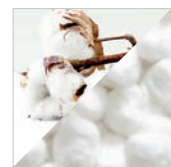
 **LEVEL 2** – suitable for use on flat or uneven surfaces in demanding conditions – protection against puncture with a force of at least 250 ± 10 N



MATERIALS

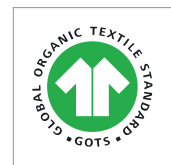
fabric and finishes

NATURAL MATERIALS



COTTON

The most popular natural material in the fashion industry. Cotton is characterized by properties such as softness, pliability, strength, absorbency and breathability. It is pleasant to the touch and resists higher temperatures. It is often used in combination with synthetic materials or elastane.



ORGANIC COTTON

Cotton produced from ecologically controlled agriculture and further processed under the strict inspection of all manufacturing processes. The biggest producers are Turkey, India, the USA and China.



BAMBOO FIBER

Fiber made of bamboo based on regenerated cellulose. It has thermoregulatory, antibacterial, antimycotic and antistatic properties. Bamboo fiber is stronger along with three times higher absorbency than cotton, resistant to frequent washing and keeps its properties for a long time. We do not recommend using fabric softener in order not to reduce absorbency of the material.



MERINO WOOL

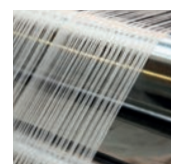
Active fiber that regulates body temperature changes and is one of the most breathable natural fibers. The fiber can absorb large amounts of moisture – along with odour molecules in the sweat. Natural elasticity maintains dimensional stability, and the fabric is easy to maintain.



VISCOSE

Fiber made based on regenerated cellulose. The input raw material for the production is wood or cotton pulp. Viscose is breathable and it has great absorption features. Compared to cotton, it is softer, shinier and finer.

SYNTHETIC MATERIALS



ELASTANE

Very fine, strong, elastic polyurethane fiber. The key feature is its high elasticity. Elastane can be stretched out from three up to seven times of its original length without breaking. It is always used in combination with other materials, ensures dimensional stability, increases elasticity and reduces material wrinkling. Elastane is prone to high temperatures.



POLYESTER

Synthetic fiber made by modification of the input material. The fiber is very strong so it can be made thick or very fine (micro polyester). Material is durable, quick-drying and easy-care. It is suitable for sports and physical activities. Through chemical and mechanical processes various modifications of the material properties can be achieved depending on the purpose of use (insulation, impregnation).



POLYAMIDE

The process of polyamide production is similar to the one of polyester. The material is durable, easy-care and has a good shape stability. It dries quickly thanks to low moisture absorption. It has twice the greater abrasion resistance than polyester. The fiber can be made thick or very fine as well as polyester. Mechanical and chemical treatment influences the final product's properties.



POLYETHYLEN

Currently the most widely used polymer in the world, characterized by high strength, friction resistance, zero moisture content and chemical resistance. Thanks to its properties it is ideal for the production of safety protective equipment protecting against mechanical influences and wear.



RECYCLED POLYESTER

The fibers are made by recycling consumer plastics (PET bottles, plastic packages and other waste material). The advantage is the consumption of less energy during production, they leave a lower carbon footprint and reduce environmental pollution. By recycling we achieve the same quality and properties as with ordinary polyester.



POLYACRYL

Acrylic/polyacrylic is a wool-like synthetic fiber produced by polymerizing acrylonitrile. Final products are durable, soft, flexible and warm, but unlike wool, they are hypoallergenic, light, quick drying, easier to maintain and wrinkle-resistant.

BRANDED MATERIALS



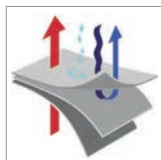
SUPIMA®

The brand represents the finest cotton of 1% worldwide production. This type of the US grown Pima cotton has over a hundred years' history. Its unique extra-long fibers are twice the strength of regular cotton. They are resistant to pulling, breaking and tearing which makes products made of it incredibly smooth, resistant, non-pilling and keeping their appearance for a long time.



NANOTEX RESIST

Certified fabric which has been fundamentally transformed through nanotechnology. The result fabric repels liquids, extends the lifetime, retains natural softness and breathability. When a liquid comes into contact with the fabric, rather than sinking into the fibers, the fluid beads roll right off the surface without leaving a mark.



SOFTSHELL

Softshell is a laminated textile for modern and sports plain weaving and plain weaving for outdoor activities. It is divided into membrane and nonmembrane. Plain weaving made from this material is light, warm, elastic and has high mechanical resistance. Softshell with a membrane can be waterproof and simultaneously air permeable.



CORDURA® CLASSIC

The CORDURA® fabric is made in accordance with approved standards of the company INVISTA. CORDURA® holds of stains, resists tears and abrasions like no other fibers. Its strength ensures high longevity. CORDURA® is a registered trademark of INVISTA for durable fabrics.



3M™ STRIPES

3M retroreflective stripes increase visibility of the person who wears the garment, thereby reduce possibility of accidents. 3M™ technology of reflective materials is based on a layer of microscopic glass spheres mounted on the substrate fabric layer with a mirror surface. On 1 cm² of the fabric there are up to 30,000 glass beads.



SEGMENTED STRIPES

Retroreflective stripes are used to improve visibility during night and bad optical conditions. They are designed for use on safety clothes, with flexibility in mind, preserving full range of motion. These stripes are thermally applied, and can handle washing very well.



BIONIC-FINISH® ECO

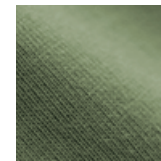
Environmentally friendly and highly durable hydrophobic textile finish based on proprietary technology that improves the functional properties of the fabric: repels impurities, it is breathable and better resists adverse weather conditions.

FABRICS



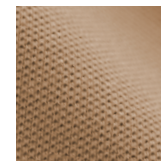
SINGLE JERSEY SLUB

Fine weft knitted fabric with characteristic structure of slub fabric. To achieve this final effect, a yarn with thicker and thinner sections is used throughout the length which are created by varying the tightness of the twist. This fabric is also characterized by its elasticity.



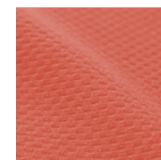
SINGLE JERSEY

Fine weft knitted fabric with characteristic dendritic columns on the outside and arches on the reverse side. The weave features ductility, softness and easy unstitching. The quality of the final product depends on the thread used for making the fabric. Products are manufactured from high quality ring spun thread.



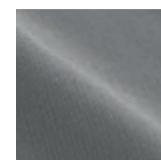
PIQUE

Weft knitted fabric patterned with geometrical relief on outside. On the reverse side it is enhanced with supplementary thread. This type of knitting is popular for production of polo shirts and plain weaving ideal for sports and leisure activities. The products made from it are breathable and easy to maintain.



INTERLOCK PIQUE

Warp knitted fabric with a pattern in which two fully interlocking rows alternate with a one-face row. One side of the knitted fabric has twilled separate stitches while the other side is plain. This type of knitting is popular for production of polo shirts and plain weaving ideal for sports and leisure activities. The products made from it are breathable and easy to maintain.



DOUBLE FACE INTERLOCK KNIT

Double face knitting also called double-sided. The wave is densely alternating front and back uprights on the outside and reverse material sides. In the unstretched position only front stitches are visible, reverse stitches are visible only while stretched. This knitted fabric looks identically from the back and it is highly elastic in the transverse direction.



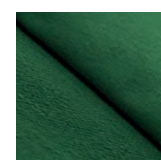
GRID KNIT

Quick-drying, breathable knit for the production of modern, functional clothing. The special grid structure perfectly moves moisture away from the body and expands it onto the fabric surface for fast drying, making it feel fresh, dry but also cooling the body. High elasticity ensures maximum comfort during wear.



RIB KNIT

Double-sided knitted fabric consisting of rib pattern indicated by 1:1 or 2:2. This information determines the ratio of regularly alternating vertical stripes of stockinette stitch with vertical stripes of reverse stockinette stitch. Rib knit fabric is elastic and it is mostly used for collars, cuffs, plackets and hem of poloshirts and sweatshirts.



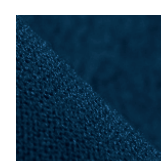
FRENCH TERRY – not brushed

Weft knitted fabric with characteristic dendritic columns on the outside and arches on the reverse side. The weave is enhanced with supplementary thread that leads along the reverse side of the fabric. The supplementary thread increases strength, absorption as well as the volume of the fabric.



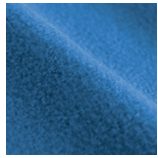
FRENCH TERRY – brushed

Weft knitted fabric with characteristic dendritic columns on the outside and brushed soft on the reverse side. Reverse side of the material enhanced with supplementary thread is fluffed by mechanical process. Such way treated surface has a larger volume and shows warmer properties.



STRETCH FLEECE

Smooth outside, brushed inside functional stretch knit fabric with great thermo isolating properties. It is soft, lightweight, breathable and quick-drying material. It is suitable for sports and physical activities. Inner part of the material has antipilling finish.



FLEECE

Weft knitted fabric characteristic with brushed dense teased soft surface on both sides of the material. It has outstanding insulating attributes, long lifetime and easy-care. Material can be treated with antipilling finish. Products are suitable for embroidery and laser engraving.



PLAIN WEAVE

Plain weave fabric is made of strong, regularly repeating weave that has the same appearance on the outside and reverse side. With its simple and dense interlacing, it creates a steady and smooth surface suitable for printing and embroidery. Plain weave fabrics are manufactured from high quality combed cotton or polyester.



POPLIN

Mostly used type of material for shirts production. It is extremely soft, pleasant to the touch, though stiff enough. It is made by a plain weave wave which has a higher amount of warp than weft threads.



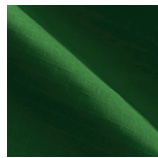
MICRO TWILL

The use of two-fold composition yarn with high density 100/2 occurs a very petty threading. This creates a thin, but effective diagonal lines that gives the twill weave an elegant and modern look. It is a popular non - wrinkling fabric with high breathability and soft feeling.



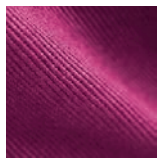
OXFORD

Wave derived from canvas wave. The difference is that there are at least doubled yarns alternating when fabricating the fabric. Oxford is shinier than canvas. It has a wide range of use. It can be made from natural or synthetic yarns.



RIP STOP

Very strong regularly repeating wave. In this smooth fabric are interwoven thick warp and weft threads in the intervals of 5 - 8 mm. The surface gets an effect of a grided structure. This imaginary grid significantly increases the fabric rip and tear resistancy.



TWILL

Wave characteristic by diagonal spacing that is regularly repeated. It consists of alternating the system of warp and weft yarns. The fabric is very robust, tear-resistant and easy-care. The most common use of twill wave is in denim or workwear. The material is also popular for caps production. It can be smooth or brushed. The brush finishing makes the surface softer with matte appearance.



TERRY

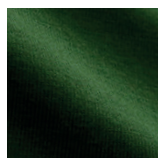
Loop fabric consists of solid loops on both sides of the material. It is a three-dimensional fabric with very soft touch and excellent absorbent properties. It is ideal for towels and bath towels production in the material composition of 100% cotton or blend of bamboo fiber and cotton.



JACQUARD KNIT

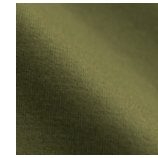
Very interesting plastic patterns can be achieved using the jacquard technique in a combination of two colors. We call regular patterning, which has a different reverse side and the obverse side is made up of visible eyelets, "birdseye". Due to its strength and stability in shape, this pattern is suitable for use on cuffs or collars and at the same time underlines the high quality and luxury of the product.

FINISHES



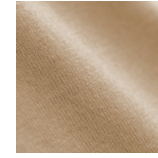
PRESHRUNK COTTON

During the production process of cotton products the space between the fiber gets reduced which eliminates the risk of shrinkage of the fabric during the washing and drying cycle. This process allows the final product to be washed at high temperatures for the purpose of removing any impurities and bacteria.



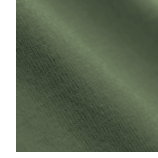
MERCERIZED COTTON

The process of mercerization consists of immersing the cotton yarn into a bath for the purpose of changing their sections and leveling uneven fibers. The fiber cross-section thus obtains an almost perfect shape. The final material becomes smoother shinier and softer. Mercerization results in higher strength and better color stability of the material.



SILICONE FINISH

The silicone finish is similar to the effect of fabric softener, however longer lasting. It makes the product soft to the touch, more dirt-proof and the prints stick much better.



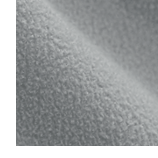
ENZYME WASH

The purpose of an enzyme wash is to reduce loose fibers on the surface of the fabric and improve its touch and appearance. For this type of treatment, an organic-based compound is used which is added directly to the dye bath. This procedure significantly reduces the amount of energy required during the process.



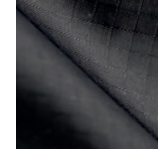
EASY CARE

The surface finish based on modification of the cotton fiber cellulose, which increases the flexibility of the material. It prevents the creases while wearing and washing cycles, thereby reducing wrinkling, easier ironing, shape stability and dimension stability.



ANTIPELLING FINISH

Antipilling finish minimizes the release of fibers and prevents fabric's pilling. This process results in fibres fixation and stabilization. It reduces damaging of the upper part under excessive use and friction and extends the product lifetime and functionality.



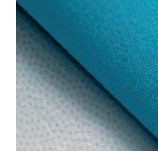
PU FINISH

A long-lasting polyurethane layer that is applied from one side of the base fabric. It provides water, moisture resistance, abrasion and dirt resistance. Due to the special composition, the layer is very flexible, lightweight and does not negatively affect the other properties of the product.



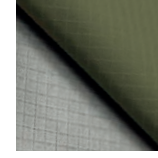
PA FINISH

Acrylic treatment is used to improve the mechanical and practical properties of the fabric. It is mainly used in outdoor clothing and is characterized by wind resistance and tensile strength.



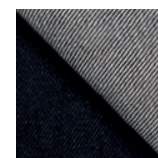
TPU LAMINACE

Durable top layer made of thermoplastic polyurethane ensures stability of material properties in a wider range of conditions. The combination of the TPU membrane and the top material maintains the flexibility of the product and provides waterproof and abrasion resistant surface with excellent bend and tensile strength.



SILVER COATING

A special matte silver coating applied from the inside of the fabric improves the functional properties of the material. It increases water resistance, prevents transparency of the top material and increases resistance to damage potentially caused by washing.



ANTI-SOILING FINISH

The ability of the top material to repel liquid, dirt and greasy dirt, which you will appreciate especially in the work environment. Dirt or grease make the droplets on the treated fabric that can be easily wiped off, thereby extending the life of the product.



WATER REPELLENT FINISH

Special surface finish preventing the penetration of moisture and fabric absorbency, which improves its functional properties - water simply runs off the surface in the form of small drops.



LEGEND

NOVELTIES



NEW PRODUCT

For information about stock availability please contact our sales department.



NEW COLOUR

For information about stock availability please contact our sales department.

MATERIALS



ELASTANE

A synthetic fiber that contains polyurethane bonds of high elasticity.



ORGANIC

Cotton produced from ecologically controlled agriculture and further processed under the strict inspection of all manufacturing processes.



MERINO

Merino wool is world renowned for its soft, yet firm feel, offering advantages in every area over common wool and many other fibers.



THREE-LAYERD SOFTSHELL

Three-layerd softshell with membrane



DOUBLE-LAYERD SOFTSHELL

Double-layerd softshell



RECYCLED POLYESTER

The fibers are made by recycling consumer plastics.

TYPES OF LABELS



TEAR OFF

Tear off label.



STICKER LABEL

Label in a form of a sticker. Can be easily taken off.



LABEL FREE

The products have only a small size label behind the neck for easy rebranding

TYPES OF SEAMS



FLAT SEAMS

Double-sided cover stitch which is flat ensures maximum wearing comfort.



TAPED SEAMS

Technology supporting the waterproofness of material at seams. The waterproof tape is applied thermally under pressure over the inside seams.

MATERIAL PROPERTIES



WINDPROOF

Windproof material prevents wind and chills from penetration.



WATERPROOF

Rating in milimetres to indicate material's resistance to water pressure. The higher the water column is, the longer the fabric will remain waterproof.



EXTRA DRY

Extra dry material.



BREATHABLE

Rating in g/m² per 24hours. The ability of a fabric to allow moisture vapor in grams in square meter per day. The higher the value is, the better fabric breathes.



COOL/WARM

Soft, easy care, quick-drying and conductive fabric.



THERMOREGULATION

Keeps you warm when it's cold and reversed.



ODOR RESISTENCE

Thanks to moist absorption it keeps sweat out of your skin and therefore it's antibacterial. The clothing stays fresh longer.

MATERIAL FINISHES



SILICONE FINISH

The silicone finish is similar to the effect of fabric softner, however more lasting. It makes the product soft to the touch, more dirt-proof and the prints hold much better.



ENZYME WASH

This treatment results in a shiny and soft surface that is also resistant to pilling.



ANTIPELLING FINISH

The antipilling finish lowers the pilling tendency of the fabric.



ANTI-SOILING FINISH

The ability of the top material to repel liquid, dirt and greasy dirt.



WATER REPELLENT FINISH

Special finish against the penetration of moisture and fabric absorbency.



EASY CARE

Surface finish eliminates fabric wrinkling to provide product easy care.

MULTIFUNCTION PRODUCTS



3 IN 1

Multi use jacket can be worn as one whole winter jacket, or separately as a windbreaker and a fleece



4 IN 1

Multi use Hi-Vis workwear jacket can be worn as one whole, upper and inner part separately, or just the upper jacket without sleeves as a vest



SIZE CHARTS

MEN / UNISEX

Size	XS		S		M		L		XL		2XL		3XL		4XL		5XL		6XL	
	-	-	44	46	48	50	52	54	56	58	60	62	-	-	-	-	-	-	-	-
height	168		172		176		180		184		188		192		196		200		204	
chest size	80	84	88	92	96	100	104	108	112	116	120	126	132	138	144	150	156	162	168	174
waist size	68	72	76	80	84	88	92	96	100	104	108	114	120	126	132	138	144	150	156	162
neck size	34	35	36	37	38	39	40	41	42	43	44	45	46	47	48	49	50	51	52	53

WOMAN

Size	XS		S		M		L		XL		2XL		3XL	
height	160		164		168		172		176		180		184	
chest size	76	80	84	88	92	96	100	104	110	116	122	128	134	140
waist size	61	65	69	73	77	81	85	89	95	101	107	113	119	125
hip girth	84	88	92	96	100	104	108	112	116	120	125	130	135	140

KIDS

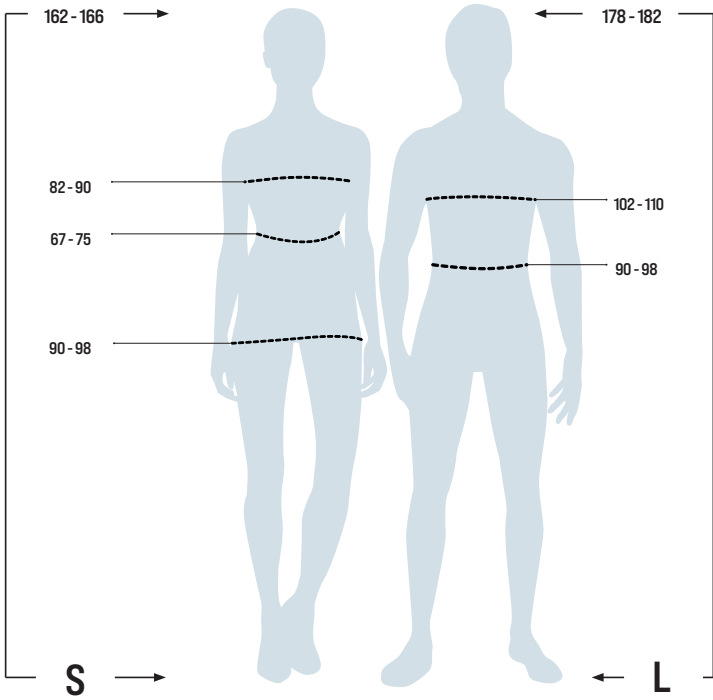
Age (years)	4	6	8	10	12
height	110	122	134	146	158
chest size	58 / 58	61 / 61	67 / 67	73 / 73	79 / 79
waist size	55 / 55	57 / 57	59,5 / 59,5	63 / 62,5	67 / 66
back size	25	29	31	34	38

SIZE CODES

Size	Codes
4 years/110 cm	08
6 years/122 cm	09
8 years/134 cm	10
10 years/146 cm	11
12 years/158 cm	07
XS	12
S	13
M	14
L	15
XL	16
2XL	17
3XL	18
4XL	19
5XL	20
6XL	21

Size	R	Codes
4-6 years/104-128 cm		31
6-8 years/116-140 cm		32
44/46		R3
48/50		R4
52/54		R5
56/58		R6
60/62		R7
44		44
46		46
48		48
50		50
52		52
54		54
56		56
58		58
60		60
62		62
48 long		L3
50 long		L4
52 long		L5
54 long		L6
56 long		L7
58 long		L8

EXAMPLE OF THE MAXIMUM SPAN OF THE FIGURE MEASURES



The data in the tables represents figure measurements not plain weaving.
Please state the order number of the product in the following format: product code-colour code-size code. Example: T-shirt BASIC in black colour, size M = 129-01-14.



101, 100 CLASSIC	57	251, 253 PERFECTION PLAIN	91	612, 613 MILES	170
102 V-NECK	66	256, 257 COLLAR UP	95	614, 615 REST	133
109 COLORMIX	59	259, 269 GRAND	93	700, 701 ACTION V-NECK	65
110 HEAVY	61	260, 261 FLASH	109	803, 804, 805 SAILOR	71
111 HEAVY V-NECK	66	262, 263 DYNAMIC	105	806 SAILOR TOP	72
119, 169, 121 FIT-LS	76	264, 265 JOURNEY	103	807 SAILOR LS	72
120 CITY	49	271 DRESS UP	95	810, 811 CHANCE	168
122 PURE	48	273, 274 DIAMOND	97	812 STAGE	43
123 LOVE	49	301 RAP 5P	175	820 BREEZE	169
124, 140, 147 FANTASY	167	303 6P KIDS	179	829 BASIC RECYCLED	41
127 ELEGANCE	77	304 CLASSIC	181	840, 841 BREAK	119
128 DREAM	67	306 SANDWICH 6P	179	900 HANDY	184
129, 134, 138 BASIC	35	307 5P	177	901 CARRY	183
130 STREET LS	59	305 6P	177	903, 905 TOWEL 450	187
132, 133, 135 CLASSIC NEW	56	315 BEANIE	175	912 ENERGY	185
136 TRIUMPH	69	328 TWISTER	181	916, 917, 918 ORGANIC TOWEL	186
137 HEAVY NEW	60	406 ESSENTIAL	125	921 SHOPPER	183
139 SLIM	79	407, ADVENTURE, 409 VIVA	124	922 EASYGO	185
141 GLANCE	48	410, 411, 412 TRENDY ZIPPER	121	951 BAMBOO TOWEL	189
142 CORE	69	413, 414 CAPE	117	952 BAMBOO BATH TOWEL	189
143, 161 VIPER	45	417, 418 DIRECT	130	C22 CAMO PURE	73
144, 149 CAMOUFLAGE	73	419 SNAP	115	F03, F10, F22 PIQUE POLO FREE	84
145 ELEMENT	61	420, 421 MOON	115	F13, F14 CAPE FREE	117
146, 162 FIT V-NECK	67	422 CHILL	113	F29, F34, F38 BASIC FREE	39
150, 152 ACTION	65	452, 451 VOYAGE	123	F37 HEAVY NEW FREE	60
153, 154 EXCLUSIVE	55	453, 454 BOMBER	123	F43, F61 VIPER FREE	45
155, 156 BRAVE	79	501, 504 JACKET	143	P21, P22 JOY	89
157, 158 MERINO RISE	75	506 JACKET HI-Q	143	P31 SUNSHINE	178
159, 160 MERINO RISE LS	75	509 BODY WARMER	163	P41 ZERO	125
171, 172 ORIGIN	53	515, 514 COOL	162	P71 PARADE	47
173, 174 NATIVE	53	517, 516 VISION	163	P72 PELICAN	47
175, 176 DESTINY	170	518 NEXT	217	P73 PAINT	46
178 FREEDOM	51	522, 521 PERFORMANCE	159	P74 PEAK	46
202, 223 SINGLE J.	99	524 WINDY	162	P75 PROGRESS LS	77
203, 210, 222 PIQUE POLO	83	525 EXIT	141	P81 PIXEL	168
207, 214 CHIC	109	527, 528, 529 FROSTY	139	R01, R02 RESIST	208
209, 229 STYLE LS	107	530 EFFECT	145	R03, R04 RESIST HEAVY	208
211 SINGLE J. LS	99	531, 532 NANO	160	R05 RESIST LS	209
212, 213 COTTON	98	533, 534 PACIFIC 3 IN 1	156	R20, R21 RESIST HEAVY POLO	209
215, 216 COTTON HEAVY	98	538, 539 RAINBOW	161	W41 VERTEX	131
217 VICTORY	169	540, 541 PHANTOM	153	W42 VERTEX	201
218 STYLE	107	550 CASUAL	215	W43 VERTEX HOODIE	203
219, 220 URBAN	91	552, 551 EVEREST	155	W52, W05 WOODY	207
221, 231, 241 PIQUE POLO LS	87	553, 554 EVEREST	155	W55 VERTEX	157
232, 233 FOCUS	89	555, 556 CROSS	149		
234, 235 PRIME	93	557, 558 CROSS	151		
		603 LEISURE	134		
		604 TWO IN ONE	135		
		610 BALANCE	134		
		611 COMFY	135		



109 COLORMIX	211
130 STREET LS	211
1V8 HV DRY	223
1V9 HV PROTECT	223
2V9 HV RUNWAY	224
3V5 HV REFLEX	225
4V6 HV ESSENTIAL	222
501, 504 JACKET	214
506 JACKET HI-Q	214
509 BODY WARMER	217
518 NEXT	217
530 EFFECT	215
550 CASUAL	215
5V1 HV FLEECE JACKET	222
5V2 HV GUARD 4 IN 1	221
5V3 HV DROP	219
9V3 HV BRIGHT	224
A99 SHIELD	225
R01, R02 RESIST	208
R03, R04 RESIST HEAVY	208
R05 RESIST LS	209
R06 BASE	212
R07 RECALL	212
R20, R21 RESIST HEAVY POLO	209
R22, R23 RESERVE	213
W02 WOODY	205
W07 VERTEX	197
W41 VERTEX	199
W42 VERTEX	201
W43 VERTEX HOODIE	203
W51, W01 WOODY	206
W52, W05 WOODY	207
W55 VERTEX	157



5P ³⁰⁷	177	EASYGO ⁹²²	185
RAP 5P ³⁰¹	175	EFFECT ⁵³⁰	215
6P ³⁰⁵	177	ELEGANCE ¹²⁷	77
6P KIDS ³⁰³	179	ELEMENT ¹⁴⁵	61
SANDWICH 6P ³⁰⁶	179	ENERGY ⁹¹²	185
ACTION ^{150, 152}	65	ESSENTIAL ⁴⁰⁶	125
ACTION V-NECK ^{700, 701}	65	EVEREST ^{552, 551}	155
ADVENTURE ⁴⁰⁷	124	EVEREST ^{553, 554}	155
BALANCE ⁶¹⁰	134	EXCLUSIVE ^{153, 154}	55
BAMBOO BATH TOWEL ⁹⁵²	189	EXIT ⁵²⁵	141
BAMBOO TOWEL ⁹⁵¹	189	FANTASY ^{124, 140, 147}	167
BASE ⁸⁰⁶	212	FIT V-NECK ^{146, 162}	67
BASIC ^{129, 134, 138}	35	FIT-LS ^{119, 169, 121}	76
BASIC FREE ^{F29, F34, F38}	39	FLASH ^{260, 261}	109
BASIC RECYCLED ⁸²⁹	41	FOCUS ^{232, 233}	89
BEANIE ³¹⁵	175	FREEDOM ¹⁷⁸	51
BODY WARMER ⁵⁰⁹	163	FROSTY ^{527, 528, 529}	139
BOMBER ^{453, 454}	123	GLANCE ¹⁴¹	48
BRAVE ^{155, 156}	79	GRAND ^{259, 269}	93
BREAK ^{840, 841}	119	HANDY ⁹⁰⁰	184
BREEZE ⁸²⁰	169	HEAVY NEW ¹³⁷	60
CAMO PURE ⁵²²	73	HEAVY NEW FREE ^{F37}	60
CAMOUFLAGE ^{144, 149}	73	HEAVY V-NECK ¹¹¹	66
CAPE ^{413, 414}	117	HEAVY ¹¹⁰	61
CAPE FREE ^{F13, F14}	117	CHANCE ^{810, 811}	168
CARRY ⁹⁰¹	183	CHIC ^{207, 214}	109
CASUAL ⁵⁶⁰	215	CHILL ⁴²²	113
CITY ¹²⁰	49	JACKET HI-Q ⁵⁰⁶	143
CLASSIC ^{101, 100}	57	JACKET ^{501, 504}	143
CLASSIC ³⁰⁴	181	JOURNEY ^{264, 265}	103
CLASSIC NEW ^{132, 133, 135}	56	JOY ^{P21, P22}	89
COLLAR UP ^{256, 257}	95	LEISURE ⁶⁰³	134
COLORMIX ¹⁰⁹	59	LOVE ¹²³	49
COMFY ⁶¹¹	135	MERINO RISE LS ^{159, 160}	75
COOL ^{515, 514}	162	MERINO RISE ^{157, 158}	75
CORE ¹⁴²	69	MILES ^{612, 613}	170
COTTON ^{212, 213}	98	MOON ^{420, 421}	115
COTTON HEAVY ^{215, 216}	98	NANO ^{531, 532}	160
CROSS ^{555, 556}	149	NATIVE ^{173, 174}	53
CROSS ^{557, 558}	151	NEXT ⁵¹⁸	206
DESTINY ^{175, 176}	170	ORGANIC TOWEL ^{916, 917, 918}	186
DIAMOND ^{273, 274}	97	ORIGIN ^{171, 172}	53
DIRECT ^{417, 418}	130	PACIFIC 3 IN 1 ^{533, 534}	156
DREAM ¹²⁸	67	PAINT ^{P73}	46
DRESS UP ²⁷¹	95	PARADE ^{P71}	47
DYNAMIC ^{262, 263}	105	PEAK ^{P74}	46
		PELICAN ^{P72}	47
		PERFECTION PLAIN ^{251, 253}	91
		PERFORMANCE ^{522, 521}	159
		PHANTOM ^{540, 541}	153

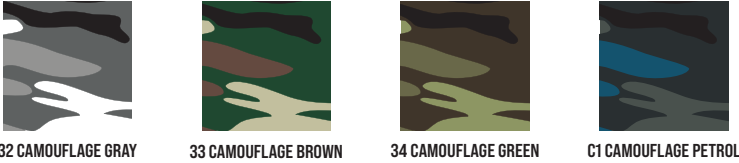
PIQUE POLO ^{203, 210, 222}	83
PIQUE POLO FREE ^{F03, F10, F22}	84
PIQUE POLO LS ^{221, 231, 241}	87
PIXEL ^{P81}	168
PRIME ^{234, 235}	93
PROGRESS LS ^{P75}	77
PURE ¹²²	48
RAINBOW ^{538, 539}	161
RECALL ^{R07}	212
RESERVE ^{R22, R23}	213
RESIST HEAVY POLO ^{R20, R21}	209
RESIST HEAVY ^{R03, R04}	208
RESIST LS ^{R05}	209
RESIST ^{R01, R02}	208
REST ^{614, 615}	133
SAILOR ^{803, 804, 805}	71
SAILOR LS ⁸⁰⁷	72
SAILOR TOP ⁸⁰⁶	72
SHOPPER ⁹²¹	183
SINGLE J. ^{202, 223}	99
SINGLE J. LS ²¹¹	99
SLIM ¹³⁹	79
SNAP ⁴¹⁹	115
STAGE ⁸¹²	43
STREET LS ¹³⁰	59
STYLE ²¹⁸	107
STYLE LS ^{209, 229}	107
SUNSHINE ^{P31}	178
TOWEL 450 ^{903, 905}	187
TRENDY ZIPPER ^{410, 411, 412}	121
TRIUMPH ¹³⁶	69
TWISTER ³²⁸	181
TWO IN ONE ⁶⁰⁴	135
URBAN ^{219, 220}	91
VERTEX HOODIE ^{W43}	203
VERTEX ^{W41}	131
VERTEX ^{W42}	201
VERTEX ^{W55}	157
VICTORY ²¹⁷	169
VIPER FREE ^{F43, F61}	45
VIPER ^{143, 161}	45
VISION ^{517, 516}	163
VIVA ⁴⁰⁹	124
V-NECK ¹⁰²	66
VOYAGE ^{452, 451}	123
WINDY ⁵²⁴	162
ZERO ^{P41}	125



BASE ^{R06}	212
BODY WARMER ⁵⁰⁹	217
CASUAL ⁵⁵⁰	215
COLORMIX ¹⁰⁹	211
EFFECT ⁵³⁰	215
HV BRIGHT ^{9V3}	224
HV DROP ^{5V3}	219
HV DRY ^{1V8}	223
HV ESSENTIAL ^{4V6}	222
HV FLEECE JACKET ^{5V1}	222
HV GUARD 4 IN 1 ^{5V2}	221
HV PROTECT ^{1V9}	223
HV REFLEX ^{3V5}	225
HV RUNWAY ^{2V9}	224
JACKET ^{501, 504}	143
JACKET HI-Q ⁵⁰⁶	214
NEXT ⁵¹⁸	217
RECALL ^{R07}	212
RESERVE ^{R22, R23}	213
RESIST HEAVY POLO ^{R20, R21}	209
RESIST HEAVY ^{R03, R04}	208
RESIST LS ^{R05}	209
RESIST ^{R01, R02}	208
SHIELD ^{A99}	225
STREET LS ¹³⁰	211
VERTEX HOODIE ^{W43}	203
VERTEX ^{W07}	197
VERTEX ^{W41}	199
VERTEX ^{W42}	201
VERTEX ^{W55}	157
WOODY ^{W02}	205
WOODY ^{W51, W01}	206
WOODY ^{W52, W05}	207

OVERVIEW OF COLOURS

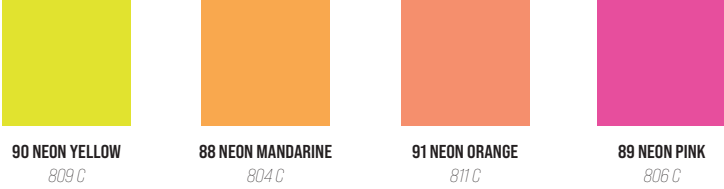
CAMOUFLAGE



FLUORESCENT COLOURS



NEON COLOURS



MELANGE COLOURS



The colour squares and Pantone® references are guides only, and may not accurately reflect the true colour of the fabric. Misprints and changes in the product portfolio reserved.



Piccolio®

RIMECK®



malfini.com



K25ENXX