

# LAVORO

ENGINEERING LIFE



2024

SAFETY FOOTWEAR

## WE BELIEVE IN LIFE

We breath Engineering.

We are certain that emotional feelings and rational insights brought together improve our daily activities.

For more than 35 years.

We care.

That's why we are experts in safety footwear engineering.

## WALKING THE FUTURE

Our mission is to provide our clients a safer working journey every day, redefying new materials for ever more comfortable durable safety shoes, pushing workers beyond.

## COLLECTIONS

01	SPACE TRIP	05
02	SPACE ODDITY	11
03	COUNTRYSIDE	17
04	T.T.	27
05	HIGHWAY	41
06	ENERGY	51
07	CUP	55
08	HEAVY DUTY	57
09	TECH	59
	FF/RF	63
10	WOMAN	69

## INFORMATION

01	ACCESSORIES	76
02	SPODOS	77
03	TECHNICAL INFORMATION	78



WHAT WE CAN DO TOGETHER IS INSPIRING. IT'S REACHING.  
IT'S VISIONARY.

## [ SPACE TRIP ]

### SUPERNOVA PROCESS

SUPER CRITICAL FLUID  
NITROGEN FOAMING

#### KEY FEATURES

LIGHTWEIGHT

EXCELLENT REBOUND/  
ENERGY RETURN

AGILITY AND COMFORT

#### PERFORMANCE

IMPROVED SHOCK  
ABSORPTION

MAXIMIZE PERFORMANCE  
AND EFFICIENCY

SUPERIOR ELASTICITY



#### SUSTAINABILITY

100% RECYCLABLE AND  
REUSABLE MIDSOLE

NO CHEMICAL  
CROSSLINKING

80% LESS RAW MATERIAL

#### PROCESS

CO2 SAVING

LESS ENERGY CONSUMPTION

LESS MATERIAL WASTE

DIMENSIONAL STABILITY

CONSISTENT QUALITY AND  
PERFORMANCE IN EACH MIDSOLE

**Supernova SCF** is a revolutionary foam, 100% recyclable, with uniform microcellular structure that has a superior mechanical performance, lightness, and energy return, it doesn't contract or deform.

[PT] Supernova SCF é uma espuma revolucionária, 100% reciclável, com estrutura microcelular uniforme que possui desempenho mecânico superior, leveza e retorno de energia, não contrai nem deforma. [ES] Supernova SCF es una espuma revolucionaria, 100% reciclable, con estructura microcelular uniforme que tiene un rendimiento mecánico, ligereza y retorno de energía superiores, no se contrae ni se deforma. [FR] Supernova SCF est une mousse révolutionnaire, 100% recyclable, avec une structure microcellulaire uniforme qui présente des performances mécaniques, une légèreté et un retour d'énergie supérieurs, elle ne se contracte ni ne se déforme. [DE] Supernova SCF ist ein revolutionärer Schaumstoff, der zu 100% recycelbar ist und über eine gleichmäßige mikrozelluläre Struktur verfügt, die über eine hervorragende mechanische Leistung, Leichtigkeit und Energierückgabe verfügt. Er zieht sich nicht zusammen und verformt sich nicht. [NL] Supernova SCF is een revolutionair schuim, 100% recyclebaar, met een uniforme microcellulaire structuur met superieure mechanische prestaties, lichtheid en energieruggave, het krimpt niet en vervormt niet.

NEW  
PRODUCT

[ FALCON SPEED GREY ]

EN ISO 20345:2011 CE S3 HRO SRC  
EU 39-48\_UK 6-13\_MP 247 - 315



1209.06



PROTECTIVE  
MIDSOLE

**KEVLAR**  
(PT) Kevlar  
(ES) Kevlar  
(FR) Kevlar  
(DE) Kevlar  
(NL) Kevlar

PROTECTIVE  
TOE CAP

**FIBERGLASS**  
(PT) Fibra de vidro  
(ES) Fibra de Vidrio  
(FR) Fibre de Verre  
(DE) Glassfaser  
(NL) Glasvezel

SOLE

**SUPERNOVA SCF**  
(PT) Supernova SCF  
(ES) Supernova SCF  
(FR) Supernova SCF  
(DE) Supernova SCF  
(NL) Supernova SCF

UPPER RAW  
MATERIAL

**RECYCLED TEXTILE** [16%]  
(PT) Têxtil reciclado  
(ES) Textil reciclado  
(FR) Textile recyclé  
(DE) Recyceltes Textil  
(NL) Gerecycled textiel

LINING  
MATERIAL

**BREATHABLE TEXTILE**  
(PT) Têxtil respirável  
(ES) Textil respirable  
(FR) Textile respirant  
(DE) Atmungsaktiv textil  
(NL) Ademend textiel

NEW  
PRODUCT

[ FALCON SPEED BLUE ]

EN ISO 20345:2011 CE S3 HRO SRC  
EU 39-48\_UK 6-13\_MP 247 - 315



1209.11



PROTECTIVE  
MIDSOLE

**KEVLAR**  
(PT) Kevlar  
(ES) Kevlar  
(FR) Kevlar  
(DE) Kevlar  
(NL) Kevlar

PROTECTIVE  
TOE CAP

**FIBERGLASS**  
(PT) Fibra de vidro  
(ES) Fibra de Vidrio  
(FR) Fibre de Verre  
(DE) Glassfaser  
(NL) Glasvezel

SOLE

**SUPERNOVA SCF**  
(PT) Supernova SCF  
(ES) Supernova SCF  
(FR) Supernova SCF  
(DE) Supernova SCF  
(NL) Supernova SCF

UPPER RAW  
MATERIAL

**RECYCLED TEXTILE** [16%]  
(PT) Têxtil reciclado  
(ES) Textil reciclado  
(FR) Textile recyclé  
(DE) Recyceltes Textil  
(NL) Gerecycled textiel

LINING  
MATERIAL

**BREATHABLE TEXTILE**  
(PT) Têxtil respirável  
(ES) Textil respirable  
(FR) Textile respirant  
(DE) Atmungsaktiv textil  
(NL) Ademend textiel

NEW  
PRODUCT

[ FALCON GREY ]

EN ISO 20345:2011 CE S3 HRO SRC  
EU 39-48\_UK 6-13\_MP 247 - 315



1209.16



PROTECTIVE  
MIDSOLE

**KEVLAR**  
(PT) Kevlar  
(ES) Kevlar  
(FR) Kevlar  
(DE) Kevlar  
(NL) Kevlar

PROTECTIVE  
TOE CAP

**FIBERGLASS**  
(PT) Fibra de vidro  
(ES) Fibra de Vidrio  
(FR) Fibre de Verre  
(DE) Glassfaser  
(NL) Glasvezel

SOLE

**SUPERNOVA SCF**  
(PT) Supernova SCF  
(ES) Supernova SCF  
(FR) Supernova SCF  
(DE) Supernova SCF  
(NL) Supernova SCF

UPPER RAW  
MATERIAL

**RECYCLED TEXTILE** [16%]  
(PT) Têxtil reciclado  
(ES) Textil reciclado  
(FR) Textile recyclé  
(DE) Recyceltes Textil  
(NL) Gerecycled textiel

LINING  
MATERIAL

**BREATHABLE TEXTILE**  
(PT) Têxtil respirável  
(ES) Textil respirable  
(FR) Textile respirant  
(DE) Atmungsaktiv textil  
(NL) Ademend textiel

NEW  
PRODUCT

[ FALCON RED ]

EN ISO 20345:2011 CE S3 HRO SRC  
EU 39-48\_UK 6-13\_MP 247 - 315



1209.04



PROTECTIVE  
MIDSOLE

**KEVLAR**  
(PT) Kevlar  
(ES) Kevlar  
(FR) Kevlar  
(DE) Kevlar  
(NL) Kevlar

PROTECTIVE  
TOE CAP

**FIBERGLASS**  
(PT) Fibra de vidro  
(ES) Fibra de Vidrio  
(FR) Fibre de Verre  
(DE) Glassfaser  
(NL) Glasvezel

SOLE

**SUPERNOVA SCF**  
(PT) Supernova SCF  
(ES) Supernova SCF  
(FR) Supernova SCF  
(DE) Supernova SCF  
(NL) Supernova SCF

UPPER RAW  
MATERIAL

**RECYCLED TEXTILE** [16%]  
(PT) Têxtil reciclado  
(ES) Textil reciclado  
(FR) Textile recyclé  
(DE) Recyceltes Textil  
(NL) Gerecycled textiel

LINING  
MATERIAL

**BREATHABLE TEXTILE**  
(PT) Têxtil respirável  
(ES) Textil respirable  
(FR) Textile respirant  
(DE) Atmungsaktiv textil  
(NL) Ademend textiel

[ FALCON SPEED BLACKOUT ]

EN ISO 20345:2011 CE S3 HRO SRC  
EU 39-48\_UK 6-13\_MP 247 - 315

NEW  
PRODUCT

1209.26



PROTECTIVE  
MIDSOLE

**KEVLAR**  
(PT) Kevlar  
(ES) Kevlar  
(FR) Kevlar  
(DE) Kevlar  
(NL) Kevlar

PROTECTIVE  
TOE CAP

**FIBERGLASS**  
(PT) Fibra de vidro  
(ES) Fibra de Vidrio  
(FR) Fibre de Verre  
(DE) Glassfaser  
(NL) Glasvezel

SOLE

**SUPERNOVA SCF**  
(PT) Supernova SCF  
(ES) Supernova SCF  
(FR) Supernova SCF  
(DE) Supernova SCF  
(NL) Supernova SCF

UPPER RAW  
MATERIAL

**WR BREATHABLE  
HI-TECH MFN**  
(PT) Tecnologia MFN  
(ES) Tecnologia MFN  
(FR) Technologie MFN  
(DE) MFN Technologie  
(NL) MFN technologie

LINING  
MATERIAL

**BREATHABLE  
TEXTILE**  
(PT) Têxtil respirável  
(ES) Textil respirable  
(FR) Textile respirant  
(DE) Atmungsaktiv textil  
(NL) Ademend textiel

[ FALCON OLIVE FL ]

EN ISO 20345:2011 CE S3 HRO SRC  
EU 39-48\_UK 6-13\_MP 247 - 315

NEW  
PRODUCT

1209.26



**FULL LEATHER**  
-Durability and resistance  
-Softness and greater comfort  
-Breathability and humidity regulation



PROTECTIVE  
MIDSOLE

**KEVLAR**  
(PT) Kevlar  
(ES) Kevlar  
(FR) Kevlar  
(DE) Kevlar  
(NL) Kevlar

PROTECTIVE  
TOE CAP

**FIBERGLASS**  
(PT) Fibra de vidro  
(ES) Fibra de Vidrio  
(FR) Fibre de Verre  
(DE) Glassfaser  
(NL) Glasvezel

SOLE

**SUPERNOVA SCF**  
(PT) Supernova SCF  
(ES) Supernova SCF  
(FR) Supernova SCF  
(DE) Supernova SCF  
(NL) Supernova SCF

UPPER RAW  
MATERIAL

**NATURAL SMOOTH  
LEATHER**  
(PT) Pele natural macia  
(ES) Piel natural macia  
(FR) Cuir souple naturel  
(DE) Natürliches weiches Leder  
(NL) Natuurlijk zacht leer

LINING  
MATERIAL

**LEATHER**  
(PT) Pele  
(ES) Piel  
(FR) Cuir  
(DE) Leder  
(NL) Leer

NEW  
PRODUCT

1219.26

[ CRUZADER SPEED BLACKOUT ]

EN ISO 20345:2011 CE S3 HRO SRC  
EU 39-48\_UK 6-13\_MP 247 - 315



PROTECTIVE  
MIDSOLE

**KEVLAR**  
(PT) Kevlar  
(ES) Kevlar  
(FR) Kevlar  
(DE) Kevlar  
(NL) Kevlar

PROTECTIVE  
TOE CAP

**FIBERGLASS**  
(PT) Fibra de vidro  
(ES) Fibra de Vidrio  
(FR) Fibre de Verre  
(DE) Glassfaser  
(NL) Glasvezel

SOLE

**SUPERNOVA SCF**  
(PT) Supernova SCF  
(ES) Supernova SCF  
(FR) Supernova SCF  
(DE) Supernova SCF  
(NL) Supernova SCF

UPPER RAW  
MATERIAL

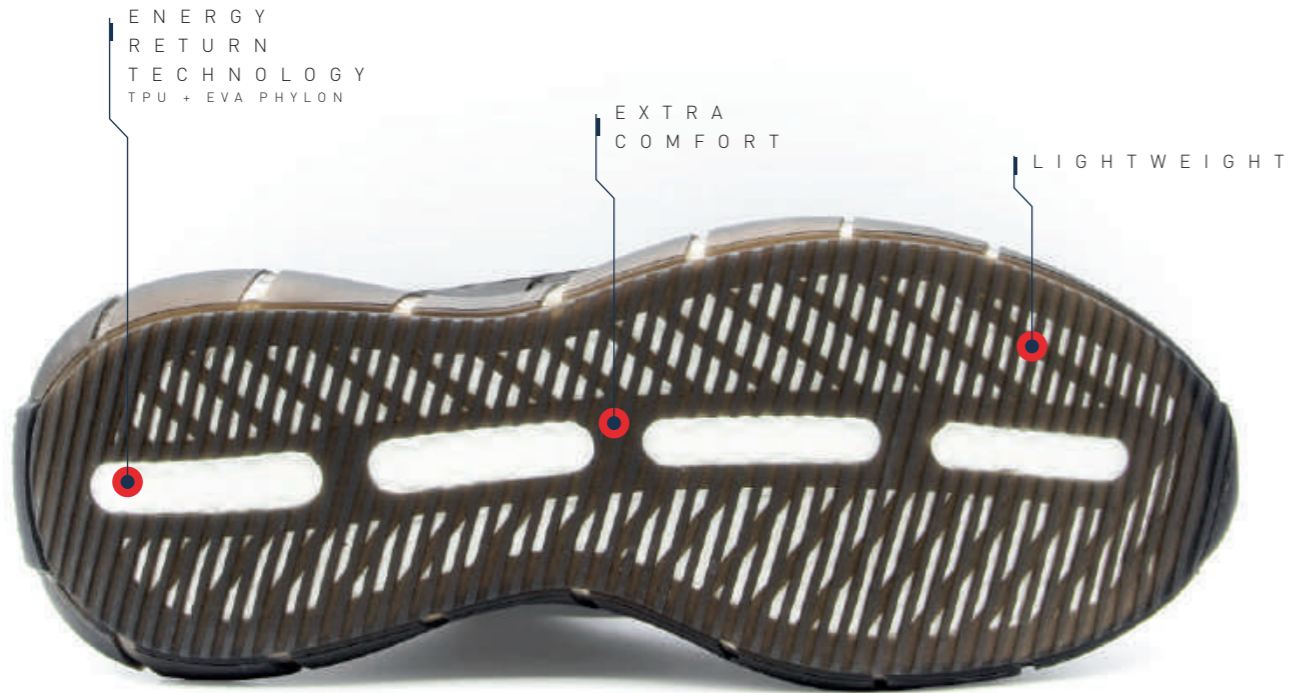
**WR BREATHABLE  
HI-TECH MFN**  
(PT) Tecnologia MFN  
(ES) Tecnologia MFN  
(FR) Technologie MFN  
(DE) MFN Technologie  
(NL) MFN technologie

LINING  
MATERIAL

**BREATHABLE  
TEXTILE**  
(PT) Têxtil respirável  
(ES) Textil respirable  
(FR) Textile respirant  
(DE) Atmungsaktiv textil  
(NL) Ademend textiel



02 [ SPACE ODDITY ]



ENERGY RETURN TECHNOLOGY  
TPU + EVA PHYLON

EXTRA COMFORT

LIGHTWEIGHT



[ STARGATE BLACK ]

EN ISO 20345:2011 CE S1 P WRU SRC  
EU 35-47\_UK 2 1/2-12\_MP 217 - 307



EXTRA CUSHIONING

NEW PRODUCT

1201.00

PROTECTIVE MIDSOLE

KEVLAR  
(PT) Kevlar  
(ES) Kevlar  
(FR) Kevlar  
(DE) Kevlar  
(NL) Kevlar

PROTECTIVE TOE CAP

COMPOSITE  
(PT) Composite  
(ES) Composite  
(FR) Composite  
(DE) Kunststoffkappe  
(NL) Composit

SOLE

TPU + EVA PHYLON  
(PT) TPU + Eva Phylon  
(ES) TPU + Eva Phylon  
(FR) TPU + Eva Phylon  
(DE) TPU + Eva Phylon  
(NL) TPU + Eva Phylon

UPPER RAW MATERIAL

HI-TECH TEXTILE  
(PT) Têxtil Hi-Tech  
(ES) Têxtil Hi-Tech  
(FR) Têxtil Hi-Tech  
(DE) High-Tech-Textil  
(NL) Hi-Tech textiel

LINNING MATERIAL

BREATHABLE TEXTILE  
(PT) Têxtil respirável  
(ES) Têxtil respirable  
(FR) Têxtil respirant  
(DE) Atmungsaktiv textil  
(NL) Ademend textiel



NEW PRODUCT

1201.01

[ STARGATE BLUE ]

EN ISO 20345:2011 CE S1 P WRU SRC  
EU 35-47\_UK 2 1/2-12\_MP 217 - 307



EXTRA CUSHIONING

PROTECTIVE MIDSOLE

KEVLAR  
(PT) Kevlar  
(ES) Kevlar  
(FR) Kevlar  
(DE) Kevlar  
(NL) Kevlar

PROTECTIVE TOE CAP

COMPOSITE  
(PT) Composite  
(ES) Composite  
(FR) Composite  
(DE) Kunststoffkappe  
(NL) Composit

SOLE

TPU + EVA PHYLON  
(PT) TPU + Eva Phylon  
(ES) TPU + Eva Phylon  
(FR) TPU + Eva Phylon  
(DE) TPU + Eva Phylon  
(NL) TPU + Eva Phylon

UPPER RAW MATERIAL

HI-TECH TEXTILE  
(PT) Têxtil Hi-Tech  
(ES) Têxtil Hi-Tech  
(FR) Têxtil Hi-Tech  
(DE) High-Tech-Textil  
(NL) Hi-Tech textiel

LINNING MATERIAL

BREATHABLE TEXTILE  
(PT) Têxtil respirável  
(ES) Têxtil respirable  
(FR) Têxtil respirant  
(DE) Atmungsaktiv textil  
(NL) Ademend textiel





[ STARDUST BLUE ]

EN ISO 20345:2011 CE S1 P WRU SRC  
EU 33-47\_UK 1 1/2-12\_MP 202 - 307



1200.10



PROTECTIVE MIDSOLE

**KEVLAR**  
(PT) Kevlar  
(ES) Kevlar  
(FR) Kevlar  
(DE) Kevlar  
(NL) Kevlar

PROTECTIVE TOE CAP

**COMPOSITE**  
(PT) Composite  
(ES) Composite  
(FR) Composite  
(DE) Kunststoffkappe  
(NL) Composit

SOLE

**TPU + EVA PHYLON**  
(PT) TPU + Eva Phylon  
(ES) TPU + Eva Phylon  
(FR) TPU + Eva Phylon  
(DE) TPU + Eva Phylon  
(NL) TPU + Eva Phylon

UPPER RAW MATERIAL

**WR BREATHABLE HI-TECH MF**  
(PT) Tecnologia MF  
(ES) Tecnologia MF  
(FR) Technologie MF  
(DE) MF Technologie  
(NL) MF technologie

LINNING MATERIAL

**BLACK DRYLEX TEXTILE**  
(PT) Têxtil Drylex Preto  
(ES) Textil Drylex Negro  
(FR) Textile Drylex Noir  
(DE) Schwarz Drylex textil  
(NL) Textiel Drylex Zwart

[ STARDUST SILVER ]

EN ISO 20345:2011 CE S1 P WRU SRC  
EU 35-47\_UK 2 1/2-12\_MP 217 - 307



1200.20



1200.00

[ STARLIGHT BLUE ]

EN ISO 20345:2011 CE S1 P WRU SRC  
EU 35-47\_UK 2 1/2-12\_MP 217 - 307



PROTECTIVE MIDSOLE

**KEVLAR**  
(PT) Kevlar  
(ES) Kevlar  
(FR) Kevlar  
(DE) Kevlar  
(NL) Kevlar

PROTECTIVE TOE CAP

**COMPOSITE**  
(PT) Composite  
(ES) Composite  
(FR) Composite  
(DE) Kunststoffkappe  
(NL) Composit

SOLE

**TPU + EVA PHYLON**  
(PT) TPU + Eva Phylon  
(ES) TPU + Eva Phylon  
(FR) TPU + Eva Phylon  
(DE) TPU + Eva Phylon  
(NL) TPU + Eva Phylon

UPPER RAW MATERIAL

**WR BREATHABLE HI-TECH MF**  
(PT) Tecnologia MF  
(ES) Tecnologia MF  
(FR) Technologie MF  
(DE) MF Technologie  
(NL) MF technologie

LINNING MATERIAL

**BLACK DRYLEX TEXTILE**  
(PT) Têxtil Drylex Preto  
(ES) Textil Drylex Negro  
(FR) Textile Drylex Noir  
(DE) Schwarz Drylex textil  
(NL) Textiel Drylex Zwart

PROTECTIVE MIDSOLE

**KEVLAR**  
(PT) Kevlar  
(ES) Kevlar  
(FR) Kevlar  
(DE) Kevlar bv  
(NL) Kevlar

PROTECTIVE TOE CAP

**COMPOSITE**  
(PT) Composite  
(ES) Composite  
(FR) Composite  
(DE) Kunststoffkappe  
(NL) Composit

SOLE

**TPU + EVA PHYLON**  
(PT) TPU + Eva Phylon  
(ES) TPU + Eva Phylon  
(FR) TPU + Eva Phylon  
(DE) TPU + Eva Phylon  
(NL) TPU + Eva Phylon

UPPER RAW MATERIAL

**WR BREATHABLE HI-TECH MF**  
(PT) Tecnologia MF  
(ES) Tecnologia MF  
(FR) Technologie MF  
(DE) MF Technologie  
(NL) MF technologie

LINNING MATERIAL

**BLACK DRYLEX TEXTILE**  
(PT) Têxtil Drylex Preto  
(ES) Textil Drylex Negro  
(FR) Textile Drylex Noir  
(DE) Schwarz Drylex textil  
(NL) Textiel Drylex Zwart

[ STARSIGHT BLUE ]

EN ISO 20345:2011 CE S1 P WRU SRC  
EU 39-47 \_UK 6-12 \_MP 247 - 307

1400.10



PROTECTIVE MIDSOLE

**KEVLAR**  
(PT) Kevlar  
(ES) Kevlar  
(FR) Kevlar  
(DE) Kevlar  
(NL) Kevlar

PROTECTIVE TOE CAP

**COMPOSITE**  
(PT) Composite  
(ES) Composite  
(FR) Composite  
(DE) Kunststoffkappe  
(NL) Composiet

SOLE

**TPU + EVA PHYLON**  
(PT) TPU + Eva Phylon  
(ES) TPU + Eva Phylon  
(FR) TPU + Eva Phylon  
(DE) TPU + Eva Phylon  
(NL) TPU + Eva Phylon

UPPER RAW MATERIAL

**WR BREATHABLE HI-TECH MF**  
(PT) Tecnologia MF  
(ES) Tecnologia MF  
(FR) Technologie MF  
(DE) MF Technologie  
(NL) MF technologie

LINNING MATERIAL

**BLACK DRYLEX TEXTILE**  
(PT) Têxtil Drylex Preto  
(ES) Textil Drylex Negro  
(FR) Textile Drylex Noir  
(DE) Schwarz Drylex textil  
(NL) Textiel Drylex Zwart

[ STARMAN BLUE ]

EN ISO 20345:2011 CE S1 P WRU SRC  
EU 39-47 \_UK 6-12 \_MP 247 - 307

1600.10



PROTECTIVE MIDSOLE

**KEVLAR**  
(PT) Kevlar  
(ES) Kevlar  
(FR) Kevlar  
(DE) Kevlar  
(NL) Kevlar

PROTECTIVE TOE CAP

**COMPOSITE**  
(PT) Composite  
(ES) Composite  
(FR) Composite  
(DE) Kunststoffkappe  
(NL) Composiet

SOLE

**TPU + EVA PHYLON**  
(PT) TPU + Eva Phylon  
(ES) TPU + Eva Phylon  
(FR) TPU + Eva Phylon  
(DE) TPU + Eva Phylon  
(NL) TPU + Eva Phylon

UPPER RAW MATERIAL

**WR BREATHABLE HI-TECH MF**  
(PT) Tecnologia MF  
(ES) Tecnologia MF  
(FR) Technologie MF  
(DE) MF Technologie  
(NL) MF technologie

LINNING MATERIAL

**BLACK DRYLEX TEXTILE**  
(PT) Têxtil Drylex Preto  
(ES) Textil Drylex Negro  
(FR) Textile Drylex Noir  
(DE) Schwarz Drylex textil  
(NL) Textiel Drylex Zwart





PROFILED SOLE THAT PROVIDES TOTAL GRIP ON ANY TYPE OF SURFACE

360° MULTIPLE TRACTION SYSTEM



90° HEEL, DESIGNED TO IMPROVE MOBILITY



EN ISO 20345:2011 CE S3 HI CI SRC  
EU 36-48\_UK 3-13\_MP 225 - 315

NEW PRODUCT

1227.01



PROTECTIVE MIDSOLE

**KEVLAR**  
(PT) Kevlar  
(ES) Kevlar  
(FR) Kevlar  
(DE) Kevlar  
(NL) Kevlar

PROTECTIVE TOE CAP

**FIBERGLASS**  
(PT) Fibra de vidro  
(ES) Fibra de Vidrio  
(FR) Fibre de Verre  
(DE) Glassfaser  
(NL) Glasvezel

SOLE

**DOUBLE DENSITY PU**  
(PT) Dupla Densidade PU  
(ES) Doble Densidade PU  
(FR) Double Densité PU  
(DE) Zweikomponenten PU  
(NL) Tweekomponenten PU

UPPER RAW MATERIAL

**WR BREATHABLE HI-TECH MF**  
(PT) Tecnologia MF  
(ES) Tecnología MF  
(FR) Technologie MF  
(DE) MF Technologie  
(NL) MF technologie

LINNING MATERIAL

**AERPLUS TEXTILE**  
(PT) Têxtil Aerplus  
(ES) Textil Aerplus  
(FR) Textile Aerplus  
(DE) Aerplus Textil  
(NL) Aerplus Textiel



NEW PRODUCT

1027.01

EN ISO 20345:2011 CE S3 HI CI SRC  
EU 36-48\_UK 3-13\_MP 225 - 315



PROTECTIVE MIDSOLE

**KEVLAR**  
(PT) Kevlar  
(ES) Kevlar  
(FR) Kevlar  
(DE) Kevlar  
(NL) Kevlar

PROTECTIVE TOE CAP

**FIBERGLASS**  
(PT) Fibra de vidro  
(ES) Fibra de Vidrio  
(FR) Fibre de Verre  
(DE) Glassfaser  
(NL) Glasvezel

SOLE

**DOUBLE DENSITY PU**  
(PT) Dupla Densidade PU  
(ES) Doble Densidade PU  
(FR) Double Densité PU  
(DE) Zweikomponenten PU  
(NL) Tweekomponenten PU

UPPER RAW MATERIAL

**WR BREATHABLE HI-TECH MF**  
(PT) Tecnologia MF  
(ES) Tecnología MF  
(FR) Technologie MF  
(DE) MF Technologie  
(NL) MF technologie

LINNING MATERIAL

**AERPLUS TEXTILE**  
(PT) Têxtil Aerplus  
(ES) Textil Aerplus  
(FR) Textile Aerplus  
(DE) Aerplus Textil  
(NL) Aerplus Textiel



NEW  
PRODUCT

1227.08

[ GLADE GREEN ]

EN ISO 20345:2011 CE S3 HI CI SRC  
EU 36-48\_UK 3-13\_MP 225 - 315



PROTECTIVE  
MIDSOLE

**KEVLAR**  
(PT) Kevlar  
(ES) Kevlar  
(FR) Kevlar  
(DE) Kevlar  
(NL) Kevlar

PROTECTIVE  
TOE CAP

**FIBERGLASS**  
(PT) Fibra de vidro  
(ES) Fibra de Vidrio  
(FR) Fibre de Verre  
(DE) Glassfaser  
(NL) Glasvezel

SOLE

**DOUBLE DENSITY  
PU**  
(PT) Dupla Densidade PU  
(ES) Doble Densidade PU  
(FR) Double Densité PU  
(DE) Zweikomponenten PU  
(NL) Tweekomponenten PU

UPPER RAW  
MATERIAL

**WR BREATHABLE  
HI-TECH MF**  
(PT) Tecnologia MF  
(ES) Tecnología MF  
(FR) Technologie MF  
(DE) MF Technologie  
(NL) MF technologie

LINING  
MATERIAL

**AERPLUS  
TEXTILE**  
(PT) Têxtil Aerplus  
(ES) Textil Aerplus  
(FR) Textile Aerplus  
(DE) Aerplus Textil  
(NL) Aerplus Textiel

NEW  
PRODUCT

1227.04

[ GLADE RED ]

EN ISO 20345:2011 CE S3 HI CI SRC  
EU 36-48\_UK 3-13\_MP 225 - 315



PROTECTIVE  
MIDSOLE

**KEVLAR**  
(PT) Kevlar  
(ES) Kevlar  
(FR) Kevlar  
(DE) Kevlar  
(NL) Kevlar

PROTECTIVE  
TOE CAP

**FIBERGLASS**  
(PT) Fibra de vidro  
(ES) Fibra de Vidrio  
(FR) Fibre de Verre  
(DE) Glassfaser  
(NL) Glasvezel

SOLE

**DOUBLE DENSITY  
PU**  
(PT) Dupla Densidade PU  
(ES) Doble Densidade PU  
(FR) Double Densité PU  
(DE) Zweikomponenten PU  
(NL) Tweekomponenten PU

UPPER RAW  
MATERIAL

**WR BREATHABLE  
HI-TECH MF**  
(PT) Tecnologia MF  
(ES) Tecnología MF  
(FR) Technologie MF  
(DE) MF Technologie  
(NL) MF technologie

LINING  
MATERIAL

**AERPLUS  
TEXTILE**  
(PT) Têxtil Aerplus  
(ES) Textil Aerplus  
(FR) Textile Aerplus  
(DE) Aerplus Textil  
(NL) Aerplus Textiel

NEW  
PRODUCT

1027.08

[ MEADOW GREEN ]

EN ISO 20345:2011 CE S3 HI CI SRC  
EU 36-48\_UK 3-13\_MP 225 - 315



PROTECTIVE  
MIDSOLE

**KEVLAR**  
(PT) Kevlar  
(ES) Kevlar  
(FR) Kevlar  
(DE) Kevlar  
(NL) Kevlar

PROTECTIVE  
TOE CAP

**FIBERGLASS**  
(PT) Fibra de vidro  
(ES) Fibra de Vidrio  
(FR) Fibre de Verre  
(DE) Glassfaser  
(NL) Glasvezel

SOLE

**DOUBLE DENSITY  
PU**  
(PT) Dupla Densidade PU  
(ES) Doble Densidade PU  
(FR) Double Densité PU  
(DE) Zweikomponenten PU  
(NL) Tweekomponenten PU

UPPER RAW  
MATERIAL

**WR BREATHABLE  
HI-TECH MF**  
(PT) Tecnologia MF  
(ES) Tecnología MF  
(FR) Technologie MF  
(DE) MF Technologie  
(NL) MF technologie

LINING  
MATERIAL

**AERPLUS  
TEXTILE**  
(PT) Têxtil Aerplus  
(ES) Textil Aerplus  
(FR) Textile Aerplus  
(DE) Aerplus Textil  
(NL) Aerplus Textiel

NEW  
PRODUCT

1027.04

[ MEADOW RED ]

EN ISO 20345:2011 CE S3 HI CI SRC  
EU 36-48\_UK 3-13\_MP 225 - 315



PROTECTIVE  
MIDSOLE

**KEVLAR**  
(PT) Kevlar  
(ES) Kevlar  
(FR) Kevlar  
(DE) Kevlar  
(NL) Kevlar

PROTECTIVE  
TOE CAP

**FIBERGLASS**  
(PT) Fibra de vidro  
(ES) Fibra de Vidrio  
(FR) Fibre de Verre  
(DE) Glassfaser  
(NL) Glasvezel

SOLE

**DOUBLE DENSITY  
PU**  
(PT) Dupla Densidade PU  
(ES) Doble Densidade PU  
(FR) Double Densité PU  
(DE) Zweikomponenten PU  
(NL) Tweekomponenten PU

UPPER RAW  
MATERIAL

**WR BREATHABLE  
HI-TECH MF**  
(PT) Tecnologia MF  
(ES) Tecnología MF  
(FR) Technologie MF  
(DE) MF Technologie  
(NL) MF technologie

LINING  
MATERIAL

**AERPLUS  
TEXTILE**  
(PT) Têxtil Aerplus  
(ES) Textil Aerplus  
(FR) Textile Aerplus  
(DE) Aerplus Textil  
(NL) Aerplus Textiel

NEW  
PRODUCT

1227.16

[ GLADE SPEED GREY ]

EN ISO 20345:2011 CE S3 HI CI SRC  
EU 36-48\_UK 3-13\_MP 225 - 315



PROTECTIVE  
MIDSOLE

**KEVLAR**  
(PT) Kevlar  
(ES) Kevlar  
(FR) Kevlar  
(DE) Kevlar  
(NL) Kevlar

PROTECTIVE  
TOE CAP

**FIBERGLASS**  
(PT) Fibra de vidro  
(ES) Fibra de Vidrio  
(FR) Fibre de Verre  
(DE) Glassfaser  
(NL) Glasvezel

SOLE

**DOUBLE DENSITY PU**  
(PT) Dupla Densidade PU  
(ES) Doble Densidade PU  
(FR) Double Densité PU  
(DE) Zweikomponenten PU  
(NL) Tweekomponenten PU

UPPER RAW  
MATERIAL

**WR BREATHABLE HI-TECH MF**  
(PT) Tecnologia MF  
(ES) Tecnología MF  
(FR) Technologie MF  
(DE) MF Technologie  
(NL) MF technologie

LINING  
MATERIAL

**AERPLUS TEXTILE**  
(PT) Têxtil Aerplus  
(ES) Textil Aerplus  
(FR) Textile Aerplus  
(DE) Aerplus Textil  
(NL) Aerplus Textiel

NEW  
PRODUCT

1027.16

[ MEADOW SPEED GREY ]

EN ISO 20345:2011 CE S3 HI CI SRC  
EU 36-48\_UK 3-13\_MP 225 - 315



PROTECTIVE  
MIDSOLE

**KEVLAR**  
(PT) Kevlar  
(ES) Kevlar  
(FR) Kevlar  
(DE) Kevlar  
(NL) Kevlar

PROTECTIVE  
TOE CAP

**FIBERGLASS**  
(PT) Fibra de vidro  
(ES) Fibra de Vidrio  
(FR) Fibre de Verre  
(DE) Glassfaser  
(NL) Glasvezel

SOLE

**DOUBLE DENSITY PU**  
(PT) Dupla Densidade PU  
(ES) Doble Densidade PU  
(FR) Double Densité PU  
(DE) Zweikomponenten PU  
(NL) Tweekomponenten PU

UPPER RAW  
MATERIAL

**WR BREATHABLE HI-TECH MF**  
(PT) Tecnologia MF  
(ES) Tecnología MF  
(FR) Technologie MF  
(DE) MF Technologie  
(NL) MF technologie

LINING  
MATERIAL

**AERPLUS TEXTILE**  
(PT) Têxtil Aerplus  
(ES) Textil Aerplus  
(FR) Textile Aerplus  
(DE) Aerplus Textil  
(NL) Aerplus Textiel



[ JASPER ]

EN ISO 20345:2011 CE S3 HI CI SRC  
EU 36-48\_UK 3-13\_MP 225 - 315



1225.00



PROTECTIVE MIDSOLE

**KEVLAR**  
(PT) Kevlar  
(ES) Kevlar  
(FR) Kevlar  
(DE) Kevlar  
(NL) Kevlar

PROTECTIVE TOE CAP

**FIBERGLASS**  
(PT) Fibra de vidro  
(ES) Fibra de Vidrio  
(FR) Fibre de Verre  
(DE) Glassfaser  
(NL) Glasvezel

SOLE

**DOUBLE DENSITY PU**  
(PT) Dupla Densidade PU  
(ES) Doble Densidade PU  
(FR) Double Densité PU  
(DE) Zweikomponenten PU  
(NL) Tweekomponenten PU

UPPER RAW MATERIAL

**BLACK NUBUCK LEATHER**  
(PT) Pele Nubuck Preto  
(ES) Cuero Nubuck Negro  
(FR) Cuir Nubuck Noir  
(DE) Schwarz Nubuck Leder  
(NL) Zwart Nubuckleer

LINING MATERIAL

**BLUE DRYLEX TEXTILE**  
(PT) Têxtil Drylex Azul  
(ES) Textil Drylex Azul  
(FR) Textile Drylex Bleu  
(DE) Blau Drylex textil  
(NL) Textiel Drylex Blauw

[ SNOWMASS ]

EN ISO 20345:2011 CE S3 HI CI SRC WR  
EU 36-48\_UK 3-13\_MP 225 - 315



\*AVAILABLE WITH METATARSAL PROTECTION REF.1025.20

1025.10



PROTECTIVE MIDSOLE

**KEVLAR**  
(PT) Kevlar  
(ES) Kevlar  
(FR) Kevlar  
(DE) Kevlar  
(NL) Kevlar

PROTECTIVE TOE CAP

**FIBERGLASS**  
(PT) Fibra de vidro  
(ES) Fibra de Vidrio  
(FR) Fibre de Verre  
(DE) Glassfaser  
(NL) Glasvezel

SOLE

**DOUBLE DENSITY PU**  
(PT) Dupla Densidade PU  
(ES) Doble Densidade PU  
(FR) Double Densité PU  
(DE) Zweikomponenten PU  
(NL) Tweekomponenten PU

UPPER RAW MATERIAL

**BLACK NUBUCK LEATHER**  
(PT) Pele Nubuck Preto  
(ES) Cuero Nubuck Negro  
(FR) Cuir Nubuck Noir  
(DE) Schwarz Nubuck Leder  
(NL) Zwart Nubuckleer

LINING MATERIAL

**AQUATEX WATER-PROOF MEMBRANE**  
(PT) Membrana Impermeável Aquatex  
(ES) Membrana Impermeable Aquatex  
(FR) Membrane Impermeable Aquatex  
(DE) Aquatex Wasserdichte Membran  
(NL) Aquatex Waterdicht Membran

[ CANYON BLACK ]

EN ISO 20345:2011 CE S3 HI CI SRC  
EU 36-48\_UK 3-13\_MP 225 - 315



1025.00



PROTECTIVE MIDSOLE

**KEVLAR**  
(PT) Kevlar  
(ES) Kevlar  
(FR) Kevlar  
(DE) Kevlar  
(NL) Kevlar

PROTECTIVE TOE CAP

**FIBERGLASS**  
(PT) Fibra de vidro  
(ES) Fibra de Vidrio  
(FR) Fibre de Verre  
(DE) Glassfaser  
(NL) Glasvezel

SOLE

**DOUBLE DENSITY PU**  
(PT) Dupla Densidade PU  
(ES) Doble Densidade PU  
(FR) Double Densité PU  
(DE) Zweikomponenten PU  
(NL) Tweekomponenten PU

UPPER RAW MATERIAL

**BLACK NUBUCK LEATHER**  
(PT) Pele Nubuck Preto  
(ES) Cuero Nubuck Negro  
(FR) Cuir Nubuck Noir  
(DE) Schwarz Nubuck Leder  
(NL) Zwart Nubuckleer

LINING MATERIAL

**BLUE DRYLEX TEXTILE**  
(PT) Têxtil Drylex Azul  
(ES) Textil Drylex Azul  
(FR) Textile Drylex Bleu  
(DE) Blau Drylex textil  
(NL) Textiel Drylex Blauw

[ YELLOWSTONE M ]

EN ISO 20345:2011 CE S3 WR HI CI M SRC  
EU 39-48\_UK 6-13\_MP 247 - 315



1025.25



PROTECTIVE MIDSOLE

**KEVLAR**  
(PT) Kevlar  
(ES) Kevlar  
(FR) Kevlar  
(DE) Kevlar  
(NL) Kevlar

PROTECTIVE TOE CAP

**FIBERGLASS**  
(PT) Fibra de vidro  
(ES) Fibra de Vidrio  
(FR) Fibre de Verre  
(DE) Glassfaser  
(NL) Glasvezel

SOLE

**DOUBLE DENSITY PU**  
(PT) Dupla Densidade PU  
(ES) Doble Densidade PU  
(FR) Double Densité PU  
(DE) Zweikomponenten PU  
(NL) Tweekomponenten PU

UPPER RAW MATERIAL

**BLACK NUBUCK LEATHER**  
(PT) Pele Nubuck Preto  
(ES) Cuero Nubuck Negro  
(FR) Cuir Nubuck Noir  
(DE) Schwarz Nubuck Leder  
(NL) Zwart Nubuckleer

LINING MATERIAL

**AQUATEX WATER-PROOF MEMBRANE**  
(PT) Membrana Impermeável Aquatex  
(ES) Membrana Impermeable Aquatex  
(FR) Membrane Impermeable Aquatex  
(DE) Aquatex Wasserdichte Membran  
(NL) Aquatex Waterdicht Membran

1026.42



[ YOSEMITE ]

EN ISO 20345:2011 CE S3 HI CI SRC  
EU 39-48\_UK 6-13\_MP 247 - 315



PROTECTIVE MIDSOLE

**KEVLAR**  
(PT) Kevlar  
(ES) Kevlar  
(FR) Kevlar  
(DE) Kevlar  
(NL) Kevlar

PROTECTIVE TOE CAP

**FIBER GLASS**  
(PT) Fibra de vidro  
(ES) Fibra de Vidrio  
(FR) Fibre de Verre  
(DE) Glasfaser  
(NL) Glasvezel

SOLE

**DOUBLE DENSITY PU**  
(PT) Dupla Densidade PU  
(ES) Doble Densidade PU  
(FR) Double Densité PU  
(DE) Zweikomponenten PU  
(NL) Tweekomponenten PU

UPPER RAW MATERIAL

**WR FLOATER COGNAC**  
(PT) WR Floater Cognac  
(ES) Coñac Floater WR  
(FR) Cuir Pleine Fleur WR Cognac  
(DE) WR Floater Cognac  
(NL) WR Floater Cognac

LINING MATERIAL

**BREATHABLE DRYLEX TEXTILE**  
(PT) Têxtil Dri-TEX  
(ES) Textil Dri-TEX  
(FR) Textile Dri-TEX Bleu  
(DE) Dri-TEX textil  
(NL) Textiel Dri-TEX

1024.32



[ CASCADES BROWN 23 ]

EN ISO 20345:2022 CE S7L CI HI HRO SC SR  
EU 39-47\_UK 6-12\_MP 247 - 307



PROTECTIVE MIDSOLE

**KEVLAR**  
(PT) Kevlar  
(ES) Kevlar  
(FR) Kevlar  
(DE) Kevlar  
(NL) Kevlar

PROTECTIVE TOE CAP

**FIBER GLASS**  
(PT) Fibra de vidro  
(ES) Fibra de Vidrio  
(FR) Fibre de Verre  
(DE) Glasfaser  
(NL) Glasvezel

SOLE

**DIRECT INJECTED PU + VIBRAM**  
(PT) PU Diretamente Injetado + Vibram  
(ES) PU inyectado directo + Vibram  
(FR) PU Injecté Directement + Vibram  
(DE) Direkt Eingespritztes PU + Vibram  
(NL) Direct geïnjecteerd PU + Vibram

UPPER RAW MATERIAL

**BROWN CRAZY HORSE LEATHER**  
(PT) Pele Crazy Horse Castanha  
(ES) Cuero Crazy Horse Marrón  
(FR) Cuir Crazy Horse Marron  
(DE) Braun Crazy Horse Leder  
(NL) Bruin Crazy Horse Leer

LINING MATERIAL

**SYMPATEX WATER-PROOF MEMBRANE**  
(PT) Membrana Impermeável Sympatex  
(ES) Membrana Impermeable Sympatex  
(FR) Membrane Impermeable Sympatex  
(DE) Sympatex Wasserdichte Membrane  
(NL) Sympatex Waterdicht Membran

1674.62



[ APALACHE ]

EN ISO 20345:2011 CE S3 WR HI CI SRC  
EU 36-48\_UK 3-13\_MP 225 - 315



PROTECTIVE MIDSOLE

**KEVLAR**  
(PT) Kevlar  
(ES) Kevlar  
(FR) Kevlar  
(DE) Kevlar  
(NL) Kevlar

PROTECTIVE TOE CAP

**FIBER GLASS**  
(PT) Fibra de vidro  
(ES) Fibra de Vidrio  
(FR) Fibre de Verre  
(DE) Glasfaser  
(NL) Glasvezel

SOLE

**DOUBLE DENSITY PU**  
(PT) Dupla Densidade PU  
(ES) Doble Densidade PU  
(FR) Double Densité PU  
(DE) Zweikomponenten PU  
(NL) Tweekomponenten PU

UPPER RAW MATERIAL

**NUBUCK LEATHER**  
(PT) Pele Nubuck  
(ES) Cuero Nubuck  
(FR) Cuir Nubuck  
(DE) Nubuck Leder  
(NL) Nubuckleer

LINING MATERIAL

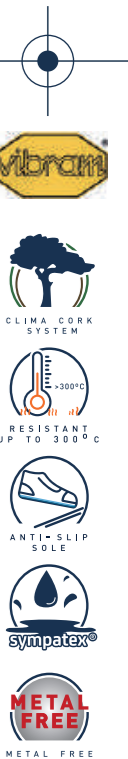
**AQUATEX WATER-PROOF MEMBRANE**  
(PT) Membrana Impermeável Aquatex  
(ES) Membrana Impermeable Aquatex  
(FR) Membrane Impermeable Aquatex  
(DE) Aquatex Wasserdichte Membrane  
(NL) Aquatex Waterdicht Membran

1024.36



[ CASCADES GREY 23 ]

EN ISO 20345:2022 CE S7L CI HI HRO SC SR  
EU 39-47\_UK 6-12\_MP 247 - 307



PROTECTIVE MIDSOLE

**KEVLAR**  
(PT) Kevlar  
(ES) Kevlar  
(FR) Kevlar  
(DE) Kevlar  
(NL) Kevlar

PROTECTIVE TOE CAP

**FIBER GLASS**  
(PT) Fibra de vidro  
(ES) Fibra de Vidrio  
(FR) Fibre de Verre  
(DE) Glasfaser  
(NL) Glasvezel

SOLE

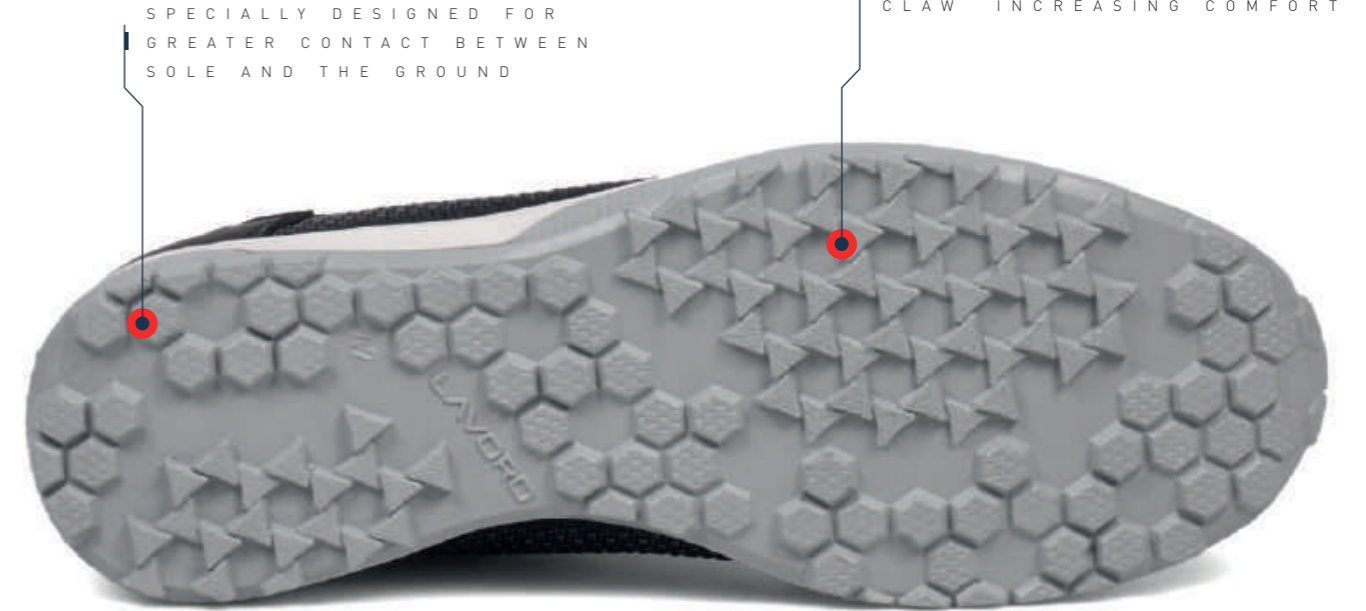
**DIRECT INJECTED PU + VIBRAM**  
(PT) PU Diretamente Injetado + Vibram  
(ES) PU inyectado directo + Vibram  
(FR) PU Injecté Directement + Vibram  
(DE) Direkt Eingespritztes PU + Vibram  
(NL) Direct geïnjecteerd PU + Vibram

UPPER RAW MATERIAL

**GREY CRAZY HORSE LEATHER**  
(PT) Pele Crazy Horse Cinza  
(ES) Cuero Crazy Horse Gris  
(FR) Cuir Crazy Horse Gris  
(DE) Grau Crazy Horse Leder  
(NL) Grijs Crazy Horse Leer

LINING MATERIAL

**SYMPATEX WATER-PROOF MEMBRANE**  
(PT) Membrana Impermeável Sympatex  
(ES) Membrana Impermeable Sympatex  
(FR) Membrane Impermeable Sympatex  
(DE) Sympatex Wasserdichte Membrane  
(NL) Sympatex Waterdicht Membran



SPECIALLY DESIGNED FOR  
GREATER CONTACT BETWEEN  
SOLE AND THE GROUND

DIMINISHED FATIGUE,  
FASCEITIS AND DIGITAL  
CLAW INCREASING COMFORT

NEW  
PRODUCT

1203.06

[ JABBA ]

EN ISO 20345:2011 CE S3 SRC  
EU 35-48\_UK 2 1/2-13\_MP 217 - 315



PROTECTIVE  
MIDSOLE

KEVLAR  
(PT) Kevlar  
(ES) Kevlar  
(FR) Kevlar  
(DE) Kevlar  
(NL) Kevlar

PROTECTIVE  
TOE CAP

COMPOSITE  
(PT) Composite  
(ES) Composite  
(FR) Composite  
(DE) Kunststoffkappe  
(NL) Composit

SOLE

DOUBLE DENSITY  
PU  
(PT) Dupla Densidade PU  
(ES) Doble Densidade PU  
(FR) Double Densité PU  
(DE) Zweikomponenten PU  
(NL) Tweekomponenten PU

UPPER RAW  
MATERIAL

BREATHABLE K3D  
TEXTILE  
(PT) Textil K3D  
(ES) Textil K3D  
(FR) Textil K3D  
(DE) K3D Textil  
(NL) Textiel K3D

LINNING  
MATERIAL

DRYLEX  
TEXTILE  
(PT) Textil Drylex  
(ES) Textil Drylex  
(FR) Textile Drylex  
(DE) Drylex textil  
(NL) Textiel Drylex

[ CHEWIE 22 ]

EN ISO 20345:2011 CE S3 SRC  
EU 35-48\_UK 2 1/2-13\_MP 217 - 315



1203.11



PROTECTIVE MIDSOLE

**KEVLAR**  
(PT) Kevlar  
(ES) Kevlar  
(FR) Kevlar  
(DE) Kevlar  
(NL) Kevlar

PROTECTIVE TOE CAP

**COMPOSITE**  
(PT) Composite  
(ES) Composite  
(FR) Composite  
(DE) Kunststoffkappe  
(NL) Composiet

SOLE

**DOUBLE DENSITY PU**  
(PT) Dupla Densidade PU  
(ES) Doble Densidade PU  
(FR) Double Densité PU  
(DE) Zweikomponenten PU  
(NL) Tweekomponenten PU

UPPER RAW MATERIAL

**BREATHABLE K3D TEXTILE**  
(PT) Têxtil K3D  
(ES) Textil K3D  
(FR) Textil K3D  
(DE) K3D Textil  
(NL) Textiel K3D

LINING MATERIAL

**BLUE DRYLEX TEXTILE**  
(PT) Têxtil Drylex Azul  
(ES) Textil Drylex Azul  
(FR) Textile Drylex Bleu  
(DE) Blau Drylex textil  
(NL) Textiel Drylex Blauw

NEW PRODUCT

1204.12

[ YODA TAUPE FL ]

EN ISO 20345:2022 CE S3L HI CI HRO FO SR  
EU 35-48\_UK 2 1/2-13\_MP 217 - 315



**FULL LEATHER**  
-Durability and resistance  
-Softness and greater comfort  
-Breathability and humidity regulation



PROTECTIVE MIDSOLE

**KEVLAR**  
(PT) Kevlar  
(ES) Kevlar  
(FR) Kevlar  
(DE) Kevlar  
(NL) Kevlar

PROTECTIVE TOE CAP

**COMPOSITE**  
(PT) Composite  
(ES) Composite  
(FR) Composite  
(DE) Kunststoffkappe  
(NL) Composiet

SOLE

**DIRECT INJECTED PU + RUBBER**  
(PT) PU Diretamente Injetado + Borracha  
(ES) PU Inyectado directo + Caucho  
(FR) PU Injecté Directement + Nitril  
(DE) Direkt Eingespritztes PU + Gummi  
(NL) Direct geïnjecteerd PU + Rubber

UPPER RAW MATERIAL

**NATURAL SMOOTH LEATHER**  
(PT) Pele natural macia  
(ES) Piel natural macia  
(FR) Cuir souple naturel  
(DE) Natürliches weiches Leder  
(NL) Natuurlijk zacht leer

LINING MATERIAL

**LEATHER**  
(PT) Pele  
(ES) Piel  
(FR) Cuir  
(DE) Leder  
(NL) Leer

1203.17



PROTECTIVE MIDSOLE

**KEVLAR**  
(PT) Kevlar  
(ES) Kevlar  
(FR) Kevlar  
(DE) Kevlar  
(NL) Kevlar

PROTECTIVE TOE CAP

**COMPOSITE**  
(PT) Composite  
(ES) Composite  
(FR) Composite  
(DE) Kunststoffkappe  
(NL) Composiet

SOLE

**DOUBLE DENSITY PU**  
(PT) Dupla Densidade PU  
(ES) Doble Densidade PU  
(FR) Double Densité PU  
(DE) Zweikomponenten PU  
(NL) Tweekomponenten PU

UPPER RAW MATERIAL

**BREATHABLE K3D TEXTILE**  
(PT) Têxtil K3D  
(ES) Textil K3D  
(FR) Textil K3D  
(DE) K3D Textil  
(NL) Textiel K3D

LINING MATERIAL

**ORANGE DRYLEX TEXTILE**  
(PT) Têxtil Drylex Laranja  
(ES) Textil Drylex Naranja  
(FR) Textile Drylex Orange  
(DE) OrangeDrylex textil  
(NL) Textiel Drylex Oranje

NEW PRODUCT

1004.12

[ LANDO TAUPE FL ]

EN ISO 20345:2022 CE S3L HI CI HRO FO SR  
EU 35-48\_UK 2 1/2-13\_MP 217 - 315



**FULL LEATHER**  
-Durability and resistance  
-Softness and greater comfort  
-Breathability and humidity regulation



PROTECTIVE MIDSOLE

**KEVLAR**  
(PT) Kevlar  
(ES) Kevlar  
(FR) Kevlar  
(DE) Kevlar  
(NL) Kevlar

PROTECTIVE TOE CAP

**COMPOSITE**  
(PT) Composite  
(ES) Composite  
(FR) Composite  
(DE) Kunststoffkappe  
(NL) Composiet

SOLE

**DIRECT INJECTED PU + RUBBER**  
(PT) PU Diretamente Injetado + Borracha  
(ES) PU Inyectado directo + Caucho  
(FR) PU Injecté Directement + Nitril  
(DE) Direkt Eingespritztes PU + Gummi  
(NL) Direct geïnjecteerd PU + Rubber

UPPER RAW MATERIAL

**NATURAL SMOOTH LEATHER**  
(PT) Pele natural macia  
(ES) Piel natural macia  
(FR) Cuir souple naturel  
(DE) Natürliches weiches Leder  
(NL) Natuurlijk zacht leer

LINING MATERIAL

**LEATHER**  
(PT) Pele  
(ES) Piel  
(FR) Cuir  
(DE) Leder  
(NL) Leer



NEW  
PRODUCT

1204.01

PROTECTIVE  
MIDSOLE

**KEVLAR**  
(PT) Kevlar  
(ES) Kevlar  
(FR) Kevlar  
(DE) Kevlar  
(NL) Kevlar

PROTECTIVE  
TOE CAP

**COMPOSITE**  
(PT) Composite  
(ES) Composite  
(FR) Composite  
(DE) Kunststoffkappe  
(NL) Composiet

SOLE

**DIRECT INJECTED  
PU + RUBBER**  
(PT) PU Diretamente Injetado + Borracha  
(ES) PU inyectado directo + Caucho  
(FR) PU Injecté Directement + Nitril  
(DE) Direkt Eingespritztes PU + Gummi  
(NL) Direct geïnjecteerd PU + Rubber

UPPER RAW  
MATERIAL

**NUBUCK LEATHER**  
(PT) Pele Nubuck  
(ES) Cuero Nubuck  
(FR) Cuir Nubuck  
(DE) Nubuck Leder  
(NL) Nubuckleer

LINNING  
MATERIAL

**LEATHER**  
(PT) Pele  
(ES) Piel  
(FR) Cuir  
(DE) Leder  
(NL) Leer

[ YODA BLUE FL ]  
EN ISO 20345:2022 CE S3L HI CI HRO FO SR  
EU 35-48\_UK 2 1/2-13\_MP 217 - 315

FULL LEATHER

- Durability and resistance
- Softness and greater comfort
- Breathability and humidity regulation



VERY HIGH QUALITY



NEW  
PRODUCT

1004.01

PROTECTIVE  
MIDSOLE

**KEVLAR**  
(PT) Kevlar  
(ES) Kevlar  
(FR) Kevlar  
(DE) Kevlar  
(NL) Kevlar

PROTECTIVE  
TOE CAP

**COMPOSITE**  
(PT) Composite  
(ES) Composite  
(FR) Composite  
(DE) Kunststoffkappe  
(NL) Composiet

SOLE

**DIRECT INJECTED  
PU + RUBBER**  
(PT) PU Diretamente Injetado + Borracha  
(ES) PU inyectado directo + Caucho  
(FR) PU Injecté Directement + Nitril  
(DE) Direkt Eingespritztes PU + Gummi  
(NL) Direct geïnjecteerd PU + Rubber

UPPER RAW  
MATERIAL

**NUBUCK LEATHER**  
(PT) Pele Nubuck  
(ES) Cuero Nubuck  
(FR) Cuir Nubuck  
(DE) Nubuck Leder  
(NL) Nubuckleer

LINNING  
MATERIAL

**LEATHER**  
(PT) Pele  
(ES) Piel  
(FR) Cuir  
(DE) Leder  
(NL) Leer

[ LANDO BLUE FL ]  
EN ISO 20345:2022 CE S3L HI CI HRO FO SR  
EU 35-48\_UK 2 1/2-13\_MP 217 - 315

FULL LEATHER

- Durability and resistance
- Softness and greater comfort
- Breathability and humidity regulation



VERY HIGH QUALITY





[ YODA BROWN ]

EN ISO 20345:2022 CE S3L HI CI HRO FO SR  
EU 35-48\_UK 2 1/2-13\_MP 217 - 315



1204.02

PROTECTIVE MIDSOLE

**KEVLAR**  
(PT) Kevlar  
(ES) Kevlar  
(FR) Kevlar  
(DE) Kevlar  
(NL) Kevlar

PROTECTIVE TOE CAP

**COMPOSITE**  
(PT) Composite  
(ES) Composite  
(FR) Composite  
(DE) Kunststoffkappe  
(NL) Composit

SOLE

**DIRECT INJECTED PU + RUBBER**  
(PT) PU Diretamente Injetado + Borracha  
(ES) PU inyectado directo + Caucho  
(FR) PU Injecté Directement + Nitril  
(DE) Direkt Eingespritztes PU + Gummi  
(NL) Direct geïnjecteerd PU + Rubber

UPPER RAW MATERIAL

**BROWN NUBUCK WR LEATHER**  
(PT) Pele Nubuck Castanha WR  
(ES) Cuero Nobuk Marrón WR  
(FR) Cuir Nubuck Marron WR  
(DE) Braun Nubuck Leder WR  
(NL) Bruin Nubuckleer WR

LINNING MATERIAL

**BLACK DRYLEX TEXTILE**  
(PT) Têxtil Drylex Preto  
(ES) Textil Drylex Negro  
(FR) Textile Drylex Noir  
(DE) Schwarz Drylex textil  
(NL) Textiel Drylex Zwart

[ VADER BLACK ]

EN ISO 20345:2022 CE S3L HI CI HRO FO SR  
EU 35-48\_UK 2 1/2-13\_MP 217 - 315



1204.00

PROTECTIVE MIDSOLE

**KEVLAR**  
(PT) Kevlar  
(ES) Kevlar  
(FR) Kevlar  
(DE) Kevlar  
(NL) Kevlar

PROTECTIVE TOE CAP

**COMPOSITE**  
(PT) Composite  
(ES) Composite  
(FR) Composite  
(DE) Kunststoffkappe  
(NL) Composit

SOLE

**DIRECT INJECTED PU + RUBBER**  
(PT) PU Diretamente Injetado + Borracha  
(ES) PU inyectado directo + Caucho  
(FR) PU Injecté Directement + Nitril  
(DE) Direkt Eingespritztes PU + Gummi  
(NL) Direct geïnjecteerd PU + Rubber

UPPER RAW MATERIAL

**BLACK FULL GRAIN LEATHER**  
(PT) Pele de Flor Integral Preta  
(ES) Cuero Full Grain Negro  
(FR) Cuir Pleine Fleur Grainé Noir  
(DE) Schwarz Glattleder  
(NL) Zwart Volnerfleer

LINNING MATERIAL

**GREY VADICONFORT TEXTILE**  
(PT) Têxtil Cinza Vadiconfort  
(ES) Textil Gris Vadiconfort  
(FR) Textile Vadiconfort Gris  
(DE) Grau Vadiconfort textil  
(NL) Textiel Vadiconfort

[ LANDO BROWN ]

EN ISO 20345:2022 CE S3L HI CI HRO FO SR  
EU 35-48\_UK 2 1/2-13\_MP 217 - 315



1004.02

PROTECTIVE MIDSOLE

**KEVLAR**  
(PT) Kevlar  
(ES) Kevlar  
(FR) Kevlar  
(DE) Kevlar  
(NL) Kevlar

PROTECTIVE TOE CAP

**COMPOSITE**  
(PT) Composite  
(ES) Composite  
(FR) Composite  
(DE) Kunststoffkappe  
(NL) Composit

SOLE

**DIRECT INJECTED PU + RUBBER**  
(PT) PU Diretamente Injetado + Borracha  
(ES) PU inyectado directo + Caucho  
(FR) PU Injecté Directement + Nitril  
(DE) Direkt Eingespritztes PU + Gummi  
(NL) Direct geïnjecteerd PU + Rubber

UPPER RAW MATERIAL

**NUBUCK WR LEATHER**  
(PT) Pele Nubuck WR  
(ES) Cuero Nobuck WR  
(FR) Cuir Nubuck WR  
(DE) Nubuck Leder WR  
(NL) Nubuckleer WR

LINNING MATERIAL

**BLACK DRYLEX TEXTILE**  
(PT) Têxtil Drylex Preto  
(ES) Textil Drylex Negro  
(FR) Textile Drylex Noir  
(DE) Schwarz Drylex textil  
(NL) Textiel Drylex Zwart

[ KENOBI BLACK ]

EN ISO 20345:2022 CE S3L HI CI HRO FO SR  
EU 35-48\_UK 2 1/2-13\_MP 217 - 315



1004.00

PROTECTIVE MIDSOLE

**KEVLAR**  
(PT) Kevlar  
(ES) Kevlar  
(FR) Kevlar  
(DE) Kevlar  
(NL) Kevlar

PROTECTIVE TOE CAP

**COMPOSITE**  
(PT) Composite  
(ES) Composite  
(FR) Composite  
(DE) Kunststoffkappe  
(NL) Composit

SOLE

**DIRECT INJECTED PU + RUBBER**  
(PT) PU Diretamente Injetado + Borracha  
(ES) PU inyectado directo + Caucho  
(FR) PU Injecté Directement + Nitril  
(DE) Direkt Eingespritztes PU + Gummi  
(NL) Direct geïnjecteerd PU + Rubber

UPPER RAW MATERIAL

**BLACK FULL GRAIN LEATHER**  
(PT) Pele de Flor Integral Preta  
(ES) Cuero Full Grain Negro  
(FR) Cuir Pleine Fleur Grainé Noir  
(DE) Schwarz Glattleder  
(NL) Zwart Volnerfleer

LINNING MATERIAL

**GREY VADICONFORT TEXTILE**  
(PT) Têxtil Cinza Vadiconfort  
(ES) Textil Gris Vadiconfort  
(FR) Textile Vadiconfort Gris  
(DE) Grau Vadiconfort textil  
(NL) Textiel Vadiconfort



**[ LYNX EARTH ]**  
EN ISO 20345:2011 CE S3 SRC  
EU 35-48\_UK 2 1/2-13\_MP 217 - 315



NEW  
PRODUCT

1257.06



**PROTECTIVE MIDSOLE**

**KEVLAR**  
(PT) Kevlar  
(ES) Kevlar  
(FR) Kevlar  
(DE) Kevlar  
(NL) Kevlar

**PROTECTIVE TOE CAP**

**COMPOSITE**  
(PT) Composite  
(ES) Composite  
(FR) Composite  
(DE) Kunststoffkappe  
(NL) Composit

**SOLE**

**DOUBLE DENSITY PU W/ 15% CORK**  
(PT) Dupla Densidade PU + 15% cortiça  
(ES) Doble Densidade PU + 15% corcho  
(FR) Double Densité PU + 15% corcho  
(DE) Zweikomponenten PU  
(NL) Tweekomponenten PU

**UPPER RAW MATERIAL**

**RECYCLED TEXTILE (97%)**  
(PT) Têxtil reciclado  
(ES) Textil reciclado  
(FR) Textile recyclé  
(DE) Recyceltes Textil  
(NL) Gerecycled textiel

**LINNING MATERIAL**

**RECYCLED TEXTILE**  
(PT) Têxtil reciclado  
(ES) Textil reciclado  
(FR) Textile recyclé  
(DE) Recyceltes Textil  
(NL) Gerecycled textiel

NEW  
PRODUCT

1257.10

**[ LYNX ICE ]**

EN ISO 20345:2011 CE S3 SRC  
EU 35-48\_UK 2 1/2-13\_MP 217 - 315



**PROTECTIVE MIDSOLE**

**KEVLAR**  
(PT) Kevlar  
(ES) Kevlar  
(FR) Kevlar  
(DE) Kevlar  
(NL) Kevlar

**PROTECTIVE TOE CAP**

**COMPOSITE**  
(PT) Composite  
(ES) Composite  
(FR) Composite  
(DE) Kunststoffkappe  
(NL) Composit

**SOLE**

**DOUBLE DENSITY PU**  
(PT) Dupla Densidade PU  
(ES) Doble Densidade PU  
(FR) Double Densité PU  
(DE) Zweikomponenten PU  
(NL) Tweekomponenten PU

**UPPER RAW MATERIAL**

**BREATHABLE TEXTILE**  
(PT) Têxtil respirável  
(ES) Textil respirable  
(FR) Textile respirant  
(DE) Atmungsaktiv textil  
(NL) Ademend textiel

**LINNING MATERIAL**

**BREATHABLE TEXTILE**  
(PT) Têxtil respirável  
(ES) Textil respirable  
(FR) Textile respirant  
(DE) Atmungsaktiv textil  
(NL) Ademend textiel



[ LYNX BLACK ]

EN ISO 20345:2011 CE S3 SRC  
EU 35-48\_UK 2 1/2-13\_MP 217 - 315



1257.50



PROTECTIVE MIDSOLE

**KEVLAR**  
(PT) Kevlar  
(ES) Kevlar  
(FR) Kevlar  
(DE) Kevlar  
(NL) Kevlar

PROTECTIVE TOE CAP

**COMPOSITE**  
(PT) Composite  
(ES) Composite  
(FR) Composite  
(DE) Kunststoffkappe  
(NL) Composiet

SOLE

**DOUBLE DENSITY PU**  
(PT) Dupla Densidade PU  
(ES) Doble Densidade PU  
(FR) Double Densité PU  
(DE) Zweikomponenten PU  
(NL) Tweekomponenten PU

UPPER RAW MATERIAL

**WR BREATHABLE HI-TECH MF**  
(PT) Tecnologia MF  
(ES) Tecnología MF  
(FR) Technologie MF  
(DE) MF Technologie  
(NL) MF technologie

LINING MATERIAL

**BLACK DRYLEX TEXTILE**  
(PT) Têxtil Drylex Preto  
(ES) Textil Drylex Negro  
(FR) Textile Drylex Noir  
(DE) Schwarz Drylex textil  
(NL) Textiel Drylex Zwart

[ LYNX RED ]

EN ISO 20345:2011 CE S3 SRC  
EU 35-48\_UK 2 1/2-13\_MP 217 - 315



1257.54



PROTECTIVE MIDSOLE

**KEVLAR**  
(PT) Kevlar  
(ES) Kevlar  
(FR) Kevlar  
(DE) Kevlar  
(NL) Kevlar

PROTECTIVE TOE CAP

**COMPOSITE**  
(PT) Composite  
(ES) Composite  
(FR) Composite  
(DE) Kunststoffkappe  
(NL) Composiet

SOLE

**DOUBLE DENSITY PU**  
(PT) Dupla Densidade PU  
(ES) Doble Densidade PU  
(FR) Double Densité PU  
(DE) Zweikomponenten PU  
(NL) Tweekomponenten PU

UPPER RAW MATERIAL

**WR BREATHABLE HI-TECH MF**  
(PT) Tecnologia MF  
(ES) Tecnología MF  
(FR) Technologie MF  
(DE) MF Technologie  
(NL) MF technologie

LINING MATERIAL

**RED DRYLEX TEXTILE**  
(PT) Têxtil Drylex Vermelho  
(ES) Textil Drylex Rojo  
(FR) Textile Drylex Rouge  
(DE) Rot Drylex textil  
(NL) Textiel Drylex Rood

[ LYNX BLUE ]

EN ISO 20345:2011 CE S3 SRC  
EU 35-48\_UK 2 1/2-13\_MP 217 - 315



1257.51



PROTECTIVE MIDSOLE

**KEVLAR**  
(PT) Kevlar  
(ES) Kevlar  
(FR) Kevlar  
(DE) Kevlar  
(NL) Kevlar

PROTECTIVE TOE CAP

**COMPOSITE**  
(PT) Composite  
(ES) Composite  
(FR) Composite  
(DE) Kunststoffkappe  
(NL) Composiet

SOLE

**DOUBLE DENSITY PU**  
(PT) Dupla Densidade PU  
(ES) Doble Densidade PU  
(FR) Double Densité PU  
(DE) Zweikomponenten PU  
(NL) Tweekomponenten PU

UPPER RAW MATERIAL

**WR BREATHABLE HI-TECH MF**  
(PT) Tecnologia MF  
(ES) Tecnología MF  
(FR) Technologie MF  
(DE) MF Technologie  
(NL) MF technologie

LINING MATERIAL

**BLUE DRYLEX TEXTILE**  
(PT) Têxtil Drylex Azul  
(ES) Textil Drylex Azul  
(FR) Textile Drylex Bleu  
(DE) Blau Drylex textil  
(NL) Textiel Drylex Blauw

[ ARA ]

EN ISO 20345:2011 CE S1 P SRC  
EU 35-48\_UK 2 1/2-13\_MP 217 - 315



1257.61



PROTECTIVE MIDSOLE

**KEVLAR**  
(PT) Kevlar  
(ES) Kevlar  
(FR) Kevlar  
(DE) Kevlar  
(NL) Kevlar

PROTECTIVE TOE CAP

**COMPOSITE**  
(PT) Composite  
(ES) Composite  
(FR) Composite  
(DE) Kunststoffkappe  
(NL) Composiet

SOLE

**DOUBLE DENSITY PU**  
(PT) Dupla Densidade PU  
(ES) Doble Densidade PU  
(FR) Double Densité PU  
(DE) Zweikomponenten PU  
(NL) Tweekomponenten PU

UPPER RAW MATERIAL

**WR BREATHABLE HI-TECH MF**  
(PT) Tecnologia MF  
(ES) Tecnología MF  
(FR) Technologie MF  
(DE) MF Technologie  
(NL) MF technologie

LINING MATERIAL

**BLUE DRYLEX TEXTILE**  
(PT) Têxtil Drylex Azul  
(ES) Textil Drylex Azul  
(FR) Textile Drylex Bleu  
(DE) Blau Drylex textil  
(NL) Textiel Drylex Blauw

[ VAGOS ]

EN ISO 20345:2022 CE S2 SR  
EU 35-47\_UK 2 1/2-12\_MP 217 - 307



1111.23



PROTECTIVE MIDSOLE

-  
(PT) -  
(ES) -  
(FR) -  
(DE) -  
(NL) -

PROTECTIVE TOE CAP

**COMPOSITE**  
(PT) Composite  
(ES) Composite  
(FR) Composite  
(DE) Kunststoffkappe  
(NL) Composiet

SOLE

**DOUBLE DENSITY PU**  
(PT) Dupla Densidade PU  
(ES) Doble Densidade PU  
(FR) Double Densité PU  
(DE) Zweikomponenten PU  
(NL) Tweekomponenten PU

UPPER RAW MATERIAL

**VEGAN MICROFIBER**  
(PT) Microfibra Vegan  
(ES) Microfibra Vegan  
(FR) Microfibre Vegan  
(DE) Mikrofaser Vegan  
(NL) Microvezel Vegan

LINNING MATERIAL

**GREY DRYLEX TEXTILE**  
(PT) Têxtil Drylex Cinza  
(ES) Textil Drylex Gris  
(FR) Textile Drylex Gris  
(DE) Grau Drylex textil  
(NL) Textiel Drylex Grijs



1204.30



PROTECTIVE MIDSOLE

**KEVLAR**  
(PT) Kevlar  
(ES) Kevlar  
(FR) Kevlar  
(DE) Kevlar  
(NL) Kevlar

PROTECTIVE TOE CAP

**COMPOSITE**  
(PT) Composite  
(ES) Composite  
(FR) Composite  
(DE) Kunststoffkappe  
(NL) Composiet

SOLE

**DOUBLE DENSITY PU**  
(PT) Dupla Densidade PU  
(ES) Doble Densidade PU  
(FR) Double Densité PU  
(DE) Zweikomponenten PU  
(NL) Tweekomponenten PU

UPPER RAW MATERIAL

**BLACK FULL GRAIN LEATHER**  
(PT) Pele de Flor Integral Preta  
(ES) Cuero Full Grain Negro  
(FR) Cuir Pleine Fleur Grainé Noir  
(DE) Schwarz Glattleder  
(NL) Zwart Volnerfleer

LINNING MATERIAL

**GREY AERPLUS TEXTILE**  
(PT) Têxtil Aerplus Cinza  
(ES) Textil Aerplus Gris  
(FR) Textile Aerplus Gris  
(DE) Grau Aerplus Textil  
(NL) Textiel Aerplus Grijs



[ VADER XXL ]

EN ISO 20345:2022 CE S3 SRA  
EU 49-53\_UK 14-17\_MP 322 - 352



1111.30



PROTECTIVE MIDSOLE

**KEVLAR**  
(PT) Kevlar  
(ES) Kevlar  
(FR) Kevlar  
(DE) Kevlar  
(NL) Kevlar

PROTECTIVE TOE CAP

**COMPOSITE**  
(PT) Composite  
(ES) Composite  
(FR) Composite  
(DE) Kunststoffkappe  
(NL) Composiet

SOLE

**DOUBLE DENSITY PU**  
(PT) Dupla Densidade PU  
(ES) Doble Densidade PU  
(FR) Double Densité PU  
(DE) Zweikomponenten PU  
(NL) Tweekomponenten PU

UPPER RAW MATERIAL

**VEGAN MICROFIBER**  
(PT) Microfibra Vegan  
(ES) Microfibra Vegan  
(FR) Microfibre Vegan  
(DE) Mikrofaser Vegan  
(NL) Microvezel Vegan

LINNING MATERIAL

**GREY DRYLEX TEXTILE**  
(PT) Têxtil Drylex Cinza  
(ES) Textil Drylex Gris  
(FR) Textile Drylex Gris  
(DE) Grau Drylex textil  
(NL) Textiel Drylex Grijs



1004.30



PROTECTIVE MIDSOLE

**KEVLAR**  
(PT) Kevlar  
(ES) Kevlar  
(FR) Kevlar  
(DE) Kevlar  
(NL) Kevlar

PROTECTIVE TOE CAP

**COMPOSITE**  
(PT) Composite  
(ES) Composite  
(FR) Composite  
(DE) Kunststoffkappe  
(NL) Composiet

SOLE

**DOUBLE DENSITY PU**  
(PT) Dupla Densidade PU  
(ES) Doble Densidade PU  
(FR) Double Densité PU  
(DE) Zweikomponenten PU  
(NL) Tweekomponenten PU

UPPER RAW MATERIAL

**BLACK FULL GRAIN LEATHER**  
(PT) Pele de Flor Integral Preta  
(ES) Cuero Full Grain Negro  
(FR) Cuir Pleine Fleur Grainé Noir  
(DE) Schwarz Glattleder  
(NL) Zwart Volnerfleer

LINNING MATERIAL

**GREY AERPLUS TEXTILE**  
(PT) Têxtil Aerplus Cinza  
(ES) Textil Aerplus Gris  
(FR) Textile Aerplus Gris  
(DE) Grau Aerplus Textil  
(NL) Textiel Aerplus Grijs



LIKE CAR TIRES, THE SOLE IS YOUR VITAL AND CONSTANT CONTACT WITH THE GROUND.

FOR THIS REASON, THIS RANGE IS MADE WITH PU/RUBBER



NEW PRODUCT

1255.00

PROTECTIVE MIDSOLE

**KEVLAR**  
(PT) Kevlar  
(ES) Kevlar  
(FR) Kevlar  
(DE) Kevlar  
(NL) Kevlar

PROTECTIVE TOE CAP

**COMPOSITE**  
(PT) Composite  
(ES) Composite  
(FR) Composite  
(DE) Kunststoffkappe  
(NL) Composit

SOLE

**DIRECT INJECTED PU + RUBBER**  
(PT) PU Diretamente Injetado + Borracha  
(ES) PU inyectado directo + Caucho  
(FR) PU Injecté Directement + Nitril  
(DE) Direkt Eingespritztes PU + Gummi  
(NL) Direct geïnjecteerd PU + Rubber

UPPER RAW MATERIAL

**NUBUCK LEATHER + TEXTILE**  
(PT) Pele Nubuck + Têxtil  
(ES) Cuero Nobuck + textil  
(FR) Cuir Nubuck + textile  
(DE) Nubukleder + Textil  
(NL) Nubuckleer + textiel

LINNING MATERIAL

**BREATHABLE TEXTILE**  
(PT) Têxtil respirável  
(ES) Textil respirable  
(FR) Textile respirant  
(DE) Atmungsaktiv textil  
(NL) Ademend textiel

EN ISO 20345:2011 CE S3 HRO SRC  
EU 35-48\_UK 2 1/2-13\_MP 217 - 315



NEW PRODUCT

1055.00

PROTECTIVE MIDSOLE

**KEVLAR**  
(PT) Kevlar  
(ES) Kevlar  
(FR) Kevlar  
(DE) Kevlar  
(NL) Kevlar

PROTECTIVE TOE CAP

**COMPOSITE**  
(PT) Composite  
(ES) Composite  
(FR) Composite  
(DE) Kunststoffkappe  
(NL) Composit

SOLE

**DIRECT INJECTED PU + RUBBER**  
(PT) PU Diretamente Injetado + Borracha  
(ES) PU inyectado directo + Caucho  
(FR) PU Injecté Directement + Nitril  
(DE) Direkt Eingespritztes PU + Gummi  
(NL) Direct geïnjecteerd PU + Rubber

UPPER RAW MATERIAL

**NUBUCK LEATHER + TEXTILE**  
(PT) Pele Nubuck + Têxtil  
(ES) Cuero Nobuck + textil  
(FR) Cuir Nubuck + textile  
(DE) Nubukleder + Textil  
(NL) Nubuckleer + textiel

LINNING MATERIAL

**BREATHABLE TEXTILE**  
(PT) Têxtil respirável  
(ES) Textil respirable  
(FR) Textile respirant  
(DE) Atmungsaktiv textil  
(NL) Ademend textiel

EN ISO 20345:2011 CE S3 HRO SRC  
EU 35-48\_UK 2 1/2-13\_MP 217 - 315



NEW  
PRODUCT

1255.06

[ E04 ]

EN ISO 20345:2011 CE S3 HRO SRC  
EU 35-48\_UK 2 1/2-13\_MP 217 - 315



PROTECTIVE  
MIDSOLE

**KEVLAR**  
(PT) Kevlar  
(ES) Kevlar  
(FR) Kevlar  
(DE) Kevlar  
(NL) Kevlar

PROTECTIVE  
TOE CAP

**COMPOSITE**  
(PT) Composite  
(ES) Composite  
(FR) Composite  
(DE) Kunststoffkappe  
(NL) Composit

SOLE

**PU + RUBBER W/  
30% RECYCLED + 15% CORK**  
(PT) PU Diretamente Injetado + Borracha  
(ES) PU inyectado directo + Caucho  
(FR) PU Injecté Directement + Nitril  
(DE) Direkt Eingespritztes PU + Gummi  
(NL) Direct geïnjecteerd PU + Rubber

UPPER RAW  
MATERIAL

**NUBUCK LEATHER  
+ TEXTILE**  
(PT) Pele Nubuck + Têxtil  
(ES) Cuero Nobuck + textil  
(FR) Cuir Nubuck + textile  
(DE) Nubuckleer + Textil  
(NL) Nubuckleer + textiel

LINING  
MATERIAL

**BREATHABLE  
TEXTILE**  
(PT) Têxtil respirável  
(ES) Textil respirable  
(FR) Textile respirant  
(DE) Atmungsaktiv textil  
(NL) Ademend textiel

NEW  
PRODUCT

1055.06

[ E14 ]

EN ISO 20345:2011 CE S3 HRO SRC  
EU 35-48\_UK 2 1/2-13\_MP 217 - 315



PROTECTIVE  
MIDSOLE

**KEVLAR**  
(PT) Kevlar  
(ES) Kevlar  
(FR) Kevlar  
(DE) Kevlar  
(NL) Kevlar

PROTECTIVE  
TOE CAP

**COMPOSITE**  
(PT) Composite  
(ES) Composite  
(FR) Composite  
(DE) Kunststoffkappe  
(NL) Composit

SOLE

**PU + RUBBER W/  
30% RECYCLED + 15% CORK**  
(PT) PU Diretamente Injetado + Borracha  
(ES) PU inyectado directo + Caucho  
(FR) PU Injecté Directement + Nitril  
(DE) Direkt Eingespritztes PU + Gummi  
(NL) Direct geïnjecteerd PU + Rubber

UPPER RAW  
MATERIAL

**NUBUCK LEATHER  
+ TEXTILE**  
(PT) Pele Nubuck + Têxtil  
(ES) Cuero Nobuck + textil  
(FR) Cuir Nubuck + textile  
(DE) Nubuckleer + Textil  
(NL) Nubuckleer + textiel

LINING  
MATERIAL

**BREATHABLE  
TEXTILE**  
(PT) Têxtil respirável  
(ES) Textil respirable  
(FR) Textile respirant  
(DE) Atmungsaktiv textil  
(NL) Ademend textiel



NEW  
PRODUCT

1038.00

[ E26 ]

EN ISO 20345:2011 CE S3 HRO SRC  
EU 39-48\_UK 6-13\_MP 247 - 315



PROTECTIVE  
MIDSOLE

**KEVLAR**  
(PT) Kevlar  
(ES) Kevlar  
(FR) Kevlar  
(DE) Kevlar  
(NL) Kevlar

PROTECTIVE  
TOE CAP

**STEEL**  
(PT) Aço  
(ES) Acero  
(FR) Acier  
(DE) Stahlkappe  
(NL) Staal

SOLE

**DIRECT INJECTED  
PU + RUBBER**  
(PT) PU Diretamente Injetado + Borracha  
(ES) PU inyectado directo + Caucho  
(FR) PU Injecté Directement + Nitril  
(DE) Direkt Eingespritztes PU + Gummi  
(NL) Direct geïnjecteerd PU + Rubber

UPPER RAW  
MATERIAL

**TEXTILE + WR  
HI-TECH MFG**  
(PT) Têxtil + Tecnologia MFG  
(ES) Textil + Tecnología MFG  
(FR) Textile + Technologie MFG  
(DE) Textil + MFG Technologie  
(NL) Textiel + MFG technologie

LINNING  
MATERIAL

**BREATHABLE  
TEXTILE**  
(PT) Têxtil respirável  
(ES) Textil respirable  
(FR) Textile respirant  
(DE) Atmungsaktiv textil  
(NL) Ademend textiel

[ E02 ]

EN ISO 20345:2011 CE S3 HRO SRC  
EU 35-48\_UK 2 1/2-13\_MP 217 - 315



1256.00

PROTECTIVE  
MIDSOLE

**KEVLAR**  
(PT) Kevlar  
(ES) Kevlar  
(FR) Kevlar  
(DE) Kevlar  
(NL) Kevlar

PROTECTIVE  
TOE CAP

**STEEL**  
(PT) Aço  
(ES) Acero  
(FR) Acier  
(DE) Stahlkappe  
(NL) Staal

SOLE

**DIRECT INJECTED  
PU + RUBBER**  
(PT) PU Diretamente Injetado + Borracha  
(ES) PU inyectado directo + Caucho  
(FR) PU Injecté Directement + Nitril  
(DE) Direkt Eingespritztes PU + Gummi  
(NL) Direct geïnjecteerd PU + Rubber

UPPER RAW  
MATERIAL

**BLACK NUBUCK  
LEATHER**  
(PT) Pele Nubuck Preto  
(ES) Cuero Nubuck Negro  
(FR) Cuir Nubuck Noir  
(DE) Schwarz Nubuck Leder  
(NL) Zwart Nubuckleer

LINNING  
MATERIAL

**BLACK PACIFIC  
TEXTILE**  
(PT) Têxtil Pacific preto  
(ES) Textil Pacific negro  
(FR) Textile Pacific noir  
(DE) Schwarz Pacific textil  
(NL) Textiel Pacific zwart



1084.30

[ E10 BLACK ]

EN ISO 20345:2011 CE S3 HRO SRC  
EU 35-48\_UK 2 1/2-13\_MP 217 - 315



PROTECTIVE  
MIDSOLE

**KEVLAR**  
(PT) Kevlar  
(ES) Kevlar  
(FR) Kevlar  
(DE) Kevlar  
(NL) Kevlar

PROTECTIVE  
TOE CAP

**STEEL**  
(PT) Aço  
(ES) Acero  
(FR) Acier  
(DE) Stahlkappe  
(NL) Staal

SOLE

**DIRECT INJECTED  
PU + RUBBER**  
(PT) PU Diretamente Injetado + Borracha  
(ES) PU inyectado directo + Caucho  
(FR) PU Injecté Directement + Nitril  
(DE) Direkt Eingespritztes PU + Gummi  
(NL) Direct geïnjecteerd PU + Rubber

UPPER RAW  
MATERIAL

**BLACK NUBUCK  
LEATHER**  
(PT) Pele Nubuck Preto  
(ES) Cuero Nubuck Negro  
(FR) Cuir Nubuck Noir  
(DE) Schwarz Nubuck Leder  
(NL) Zwart Nubuckleer

LINNING  
MATERIAL

**BLACK PACIFIC  
TEXTILE**  
(PT) Têxtil Pacific preto  
(ES) Textil Pacific negro  
(FR) Textile Pacific noir  
(DE) Schwarz Pacific textil  
(NL) Textiel Pacific zwart

[ E16 HONEY ]

EN ISO 20345:2011 CE S3 HRO SRC  
EU 35-48\_UK 2 1/2-13\_MP 217 - 315



1084.36

PROTECTIVE MIDSOLE

**KEVLAR**  
(PT) Kevlar  
(ES) Kevlar  
(FR) Kevlar  
(DE) Kevlar  
(NL) Kevlar

PROTECTIVE TOE CAP

**STEEL**  
(PT) Aço  
(ES) Acero  
(FR) Acier  
(DE) Stahlkappe  
(NL) Staal

SOLE

**DIRECT INJECTED PU + RUBBER**  
(PT) PU Diretamente Injetado + Borracha  
(ES) PU injectado directo + Caucho  
(FR) PU Injecté Directement + Nitril  
(DE) Direkt Eingespritztes PU + Gummi  
(NL) Direct geïnjecteerd PU + Rubber

UPPER RAW MATERIAL

**BEIGE NUBUCK LEATHER**  
(PT) Pele Nubuck Bege  
(ES) Cuero Nobuck Beige  
(FR) Cuir Nubuck Beige  
(DE) Beige Nubuck Leder  
(NL) Beige Nubuckleer

LINING MATERIAL

**BLACK PACIFIC TEXTILE**  
(PT) Têxtil Pacific preto  
(ES) Textil Pacific negro  
(FR) Textile Pacific noir  
(DE) Schwarz Pacific textil  
(NL) Textiel Pacific zwart

[ E18 BLUE ]

EN ISO 20345:2011 CE S3 HRO SRC  
EU 35-48\_UK 2 1/2-13\_MP 217 - 315



1084.21

PROTECTIVE MIDSOLE

**KEVLAR**  
(PT) Kevlar  
(ES) Kevlar  
(FR) Kevlar  
(DE) Kevlar  
(NL) Kevlar

PROTECTIVE TOE CAP

**STEEL**  
(PT) Aço  
(ES) Acero  
(FR) Acier  
(DE) Stahlkappe  
(NL) Staal

SOLE

**DIRECT INJECTED PU + RUBBER**  
(PT) PU Diretamente Injetado + Borracha  
(ES) PU injectado directo + Caucho  
(FR) PU Injecté Directement + Nitril  
(DE) Direkt Eingespritztes PU + Gummi  
(NL) Direct geïnjecteerd PU + Rubber

UPPER RAW MATERIAL

**BLUE NUBUCK LEATHER**  
(PT) Pele Nubuck Azul  
(ES) Cuero Nobuck Azul  
(FR) Cuir Nubuck Bleu  
(DE) Blau Nubuck Leder  
(NL) Blauw Nubuckleer

LINING MATERIAL

**BLACK PACIFIC TEXTILE**  
(PT) Têxtil Pacific preto  
(ES) Textil Pacific negro  
(FR) Textile Pacific noir  
(DE) Schwarz Pacific textil  
(NL) Textiel Pacific zwart

[ E17 BROWN ]

EN ISO 20345:2011 CE S3 HRO SRC  
EU 35-48\_UK 2 1/2-13\_MP 217 - 315



1084.22

PROTECTIVE MIDSOLE

**KEVLAR**  
(PT) Kevlar  
(ES) Kevlar  
(FR) Kevlar  
(DE) Kevlar  
(NL) Kevlar

PROTECTIVE TOE CAP

**STEEL**  
(PT) Aço  
(ES) Acero  
(FR) Acier  
(DE) Stahlkappe  
(NL) Staal

SOLE

**DIRECT INJECTED PU + RUBBER**  
(PT) PU Diretamente Injetado + Borracha  
(ES) PU injectado directo + Caucho  
(FR) PU Injecté Directement + Nitril  
(DE) Direkt Eingespritztes PU + Gummi  
(NL) Direct geïnjecteerd PU + Rubber

UPPER RAW MATERIAL

**BROWN NUBUCK LEATHER**  
(PT) Pele Nubuck Castanho  
(ES) Cuero Nobuck Marrón  
(FR) Cuir Nubuck Marron  
(DE) Braun Nubuck Leder  
(NL) Bruin Nubuckleer

LINING MATERIAL

**BLACK PACIFIC TEXTILE**  
(PT) Têxtil Pacific preto  
(ES) Textil Pacific negro  
(FR) Textile Pacific noir  
(DE) Schwarz Pacific textil  
(NL) Textiel Pacific zwart

[ E22 ]

EN ISO 20345:2011 CE S3 HRO SRC  
EU 39-48\_UK 6-13\_MP 247 - 315



1058.00

PROTECTIVE MIDSOLE

**KEVLAR**  
(PT) Kevlar  
(ES) Kevlar  
(FR) Kevlar  
(DE) Kevlar  
(NL) Kevlar

PROTECTIVE TOE CAP

**STEEL**  
(PT) Aço  
(ES) Acero  
(FR) Acier  
(DE) Stahlkappe  
(NL) Staal

SOLE

**DIRECT INJECTED PU + RUBBER**  
(PT) PU Diretamente Injetado + Borracha  
(ES) PU injectado directo + Caucho  
(FR) PU Injecté Directement + Nitril  
(DE) Direkt Eingespritztes PU + Gummi  
(NL) Direct geïnjecteerd PU + Rubber

UPPER RAW MATERIAL

**BLACK NUBUCK LEATHER**  
(PT) Pele Nubuck Preto  
(ES) Cuero Nobuck Negro  
(FR) Cuir Nubuck Noir  
(DE) Schwarz Nubuck Leder  
(NL) Zwart Nubuckleer

LINING MATERIAL

**BLACK PACIFIC TEXTILE**  
(PT) Têxtil Pacific preto  
(ES) Textil Pacific negro  
(FR) Textile Pacific noir  
(DE) Schwarz Pacific textil  
(NL) Textiel Pacific zwart



1084.42



[ E82 ]

EN ISO 20345:2011 CE S3 HRO SRC  
EU 35-48\_UK 2 1/2-13\_MP 217 - 315



**PROTECTIVE MIDSOLE**

**KEVLAR**  
(PT) Kevlar  
(ES) Kevlar  
(FR) Kevlar  
(DE) Kevlar  
(NL) Kevlar

**PROTECTIVE TOE CAP**

**STEEL**  
(PT) Aço  
(ES) Acero  
(FR) Acier  
(DE) Stahlkappe  
(NL) Staal

**SOLE**

**DIRECT INJECTED PU + RUBBER**  
(PT) PU Diretamente Injetado + Borracha  
(ES) PU inyectado directo + Caucho  
(FR) PU Injecté Directement + Nitril  
(DE) Direkt Eingespritztes PU + Gummi  
(NL) Direct geïnjecteerd PU + Rubber

**UPPER RAW MATERIAL**

**WR FLOATER COGNAC**  
(PT) WR Floater Cognac  
(ES) Coñac Floater WR  
(FR) Cuir Pleine Fleur WR Cognac  
(DE) WR Floater Cognac  
(NL) WR Floater Cognac

**LINING MATERIAL**

**BLACK PACIFIC TEXTILE**  
(PT) Têxtil Pacific preto  
(ES) Textil Pacific negro  
(FR) Textile Pacific noir  
(DE) Schwarz Pacific textil  
(NL) Textiel Pacific zwart



[ E802 ]

EN ISO 20345:2011 CE S3 HRO SRC WR  
EU 35-48\_UK 2 1/2-13\_MP 217 - 315



**PROTECTIVE MIDSOLE**

**KEVLAR**  
(PT) Kevlar  
(ES) Kevlar  
(FR) Kevlar  
(DE) Kevlar  
(NL) Kevlar

**PROTECTIVE TOE CAP**

**STEEL**  
(PT) Aço  
(ES) Acero  
(FR) Acier  
(DE) Stahlkappe  
(NL) Staal

**SOLE**

**DIRECT INJECTED PU + RUBBER**  
(PT) PU Diretamente Injetado + Borracha  
(ES) PU inyectado directo + Caucho  
(FR) PU Injecté Directement + Nitril  
(DE) Direkt Eingespritztes PU + Gummi  
(NL) Direct geïnjecteerd PU + Rubber

**UPPER RAW MATERIAL**

**WR FLOATER COGNAC**  
(PT) WR Floater Cognac  
(ES) Coñac Floater WR  
(FR) Cuir Pleine Fleur WR Cognac  
(DE) WR Floater Cognac  
(NL) WR Floater Cognac

**LINING MATERIAL**

**FUR + AQUATEX MEMBRANE**  
(PT) Forro de Pêlo + Membrana Aquatex  
(ES) Forro de Piel+ Membrana Aquatex  
(FR) Doublure En Fourrure + Membrane Aquatex  
(DE) Pelzfutter + Aquatex Membrane  
(NL) Bontvoering + Aquatex Membraan





IMPROVES CUSHIONING,  
PROTECTING THE FOOT  
AGAINST SHOCKS AND  
ENHANCING COMFORT

DIRECTLY INJECTED PU SOLE  
PROVIDES SHOCK ABSORPTION  
ACROSS THE WHOLE FOOT,  
HIGH FLEXIBILITY AND  
MAKES IT LIGHTWEIGHT

THE TPU OUTSOLE  
PROVIDES EXCELLENT  
ABRASION AND SLIP  
RESISTANCE ENSURING  
A SECURE CONTACT TO  
THE GROUND

**CLIMA CORK SYSTEM**  
THE NATURAL ENVIRONMENT OF YOUR FEET

[HYBRID BLUE]

EN ISO 20345:2011 CE S3 SRC  
EU 35-48\_UK 2 1/2-13\_MP 217 - 315

1263.11



- ESD
- CLIMA CORK SYSTEM
- WATER REPELLENT UPPER
- LIGHTWEIGHT
- METAL FREE
- ANTI-SLIP SOLE

**PROTECTIVE MIDSOLE**

**KEVLAR**  
[PT] Kevlar  
[ES] Kevlar  
[FR] Kevlar  
[DE] Kevlar  
[NL] Kevlar

**PROTECTIVE TOE CAP**

**COMPOSITE**  
[PT] Composite  
[ES] Composite  
[FR] Composite  
[DE] Kunststoffkappe  
[NL] Composiet

**SOLE**

**DIRECT INJECTED PU + TPU**  
[PT] PU Diretamente Injetado + TPU  
[ES] PU Inyectado directo + TPU  
[FR] PU Injecté Directement + TPU  
[DE] Direkt Eingespritztes PU + TPU  
[NL] Direct geïnjecteerd PU + TPU

**UPPER RAW MATERIAL**

**BLACK LASER HD WR TEXTILE**  
[PT] Têxtil Laser HD WR  
[ES] Textil Negro Laser HD WR  
[FR] Textile Laser Noir HD WR  
[DE] Schwarz Laser HD WR Textil  
[NL] Zwart Laser HD WR Textiel

**LINNING MATERIAL**

**BLACK CAMBRELLÉ TEXTILE**  
[PT] Têxtil Cambrelle preto  
[ES] Textil Cambrelle negro  
[FR] Textile Cambrelle noir  
[DE] Schwarz Cambrelle Textil  
[NL] Textiel Cambrelle zwart

[ HYBRID RED ]

EN ISO 20345:2011 CE S3 SRC  
EU 35-48\_UK 2 1/2-13\_MP 217 - 315



1263.14

PROTECTIVE MIDSOLE

**KEVLAR**  
(PT) Kevlar  
(ES) Kevlar  
(FR) Kevlar  
(DE) Kevlar  
(NL) Kevlar

PROTECTIVE TOE CAP

**COMPOSITE**  
(PT) Composite  
(ES) Composite  
(FR) Composite  
(DE) Kunststoffkappe  
(NL) Composiet

SOLE

**DIRECT INJECTED PU + TPU**  
(PT) PU Diretamente Injetado + TPU  
(ES) PU inyectado directo + TPU  
(FR) PU Injecté Directement + TPU  
(DE) Direkt Eingespritztes PU + TPU  
(NL) Direct geïnjecteerd PU + TPU

UPPER RAW MATERIAL

**BLACK LASER HD WR TEXTILE**  
(PT) Têxtil Laser HD WR  
(ES) Têxtil Negro Laser HD WR  
(FR) Textile Laser Noir HD WR  
(DE) Schwarz Laser HD WR Textil  
(NL) Zwart Laser HD WR Textiel

LINING MATERIAL

**BLACK CAMBRELLE TEXTILE**  
(PT) Têxtil Cambrelle preto  
(ES) Têxtil Cambrelle negro  
(FR) Textile Cambrelle noir  
(DE) Schwarz Cambrelle Textil  
(NL) Textiel Cambrelle zwart

1250.00

[ TIDAL ]

EN ISO 20345:2011 CE S3 SRC  
EU 36-48\_UK 3-13\_MP 225 - 315



PROTECTIVE MIDSOLE

**KEVLAR**  
(PT) Kevlar  
(ES) Kevlar  
(FR) Kevlar  
(DE) Kevlar  
(NL) Kevlar

PROTECTIVE TOE CAP

**COMPOSITE**  
(PT) Composite  
(ES) Composite  
(FR) Composite  
(DE) Kunststoffkappe  
(NL) Composiet

SOLE

**DIRECT INJECTED PU + TPU**  
(PT) PU Diretamente Injetado + TPU  
(ES) PU inyectado directo + TPU  
(FR) PU Injecté Directement + TPU  
(DE) Direkt Eingespritztes PU + TPU  
(NL) Direct geïnjecteerd PU + TPU

UPPER RAW MATERIAL

**BLACK LEATHER + GREY TEXTILE**  
(PT) Pele Preta + Têxtil Cinza  
(ES) Piel Negra + Textil Gris  
(FR) Cuir Noir + Textile Gris  
(DE) Schwarz Leder + Grau Textil  
(NL) Zwart Leer + Grijs Textiel

LINING MATERIAL

**BLACK CAMBRELLE TEXTILE**  
(PT) Têxtil Cambrelle preto  
(ES) Têxtil Cambrelle negro  
(FR) Textile Cambrelle noir  
(DE) Schwarz Cambrelle Textil  
(NL) Textiel Cambrelle zwart

[ SOLAR ]

EN ISO 20345:2011 CE S1P SRC  
EU 36-48\_UK 3-13\_MP 225 - 315



1250.01

PROTECTIVE MIDSOLE

**KEVLAR**  
(PT) Kevlar  
(ES) Kevlar  
(FR) Kevlar  
(DE) Kevlar  
(NL) Kevlar

PROTECTIVE TOE CAP

**COMPOSITE**  
(PT) Composite  
(ES) Composite  
(FR) Composite  
(DE) Kunststoffkappe  
(NL) Composiet

SOLE

**DIRECT INJECTED PU + TPU**  
(PT) PU Diretamente Injetado + TPU  
(ES) PU inyectado directo + TPU  
(FR) PU Injecté Directement + TPU  
(DE) Direkt Eingespritztes PU + TPU  
(NL) Direct geïnjecteerd PU + TPU

UPPER RAW MATERIAL

**BLUE SUEDE LEATHER**  
(PT) Couro Acamuçado Azul  
(ES) Cuero de Gamuza Azul  
(FR) Croute Velours Bleu  
(DE) Blau Suede Leder  
(NL) Suede Leer Blauw

LINING MATERIAL

**BLACK CAMBRELLE TEXTILE**  
(PT) Têxtil Cambrelle preto  
(ES) Têxtil Cambrelle negro  
(FR) Textile Cambrelle noir  
(DE) Schwarz Cambrelle Textil  
(NL) Textiel Cambrelle zwart

1050.00

[ BIOMASS ]

EN ISO 20345:2011 CE S3 SRC  
EU 36-48\_UK 3-13\_MP 225 - 315



PROTECTIVE MIDSOLE

**KEVLAR**  
(PT) Kevlar  
(ES) Kevlar  
(FR) Kevlar  
(DE) Kevlar  
(NL) Kevlar

PROTECTIVE TOE CAP

**COMPOSITE**  
(PT) Composite  
(ES) Composite  
(FR) Composite  
(DE) Kunststoffkappe  
(NL) Composiet

SOLE

**DIRECT INJECTED PU + TPU**  
(PT) PU Diretamente Injetado + TPU  
(ES) PU inyectado directo + TPU  
(FR) PU Injecté Directement + TPU  
(DE) Direkt Eingespritztes PU + TPU  
(NL) Direct geïnjecteerd PU + TPU

UPPER RAW MATERIAL

**BLACK LEATHER + GREY TEXTILE**  
(PT) Pele Preta + Têxtil Cinza  
(ES) Piel Negra + Textil Gris  
(FR) Cuir Noir + Textile Gris  
(DE) Schwarz Leder + Grau Textil  
(NL) Zwart Leer + Grijs Textiel

LINING MATERIAL

**BLACK CAMBRELLE TEXTILE**  
(PT) Têxtil Cambrelle preto  
(ES) Têxtil Cambrelle negro  
(FR) Textile Cambrelle noir  
(DE) Schwarz Cambrelle Textil  
(NL) Textiel Cambrelle zwart

DESIGNED FOR MULTIDIRECTIONAL FLOORS, GIVING A PERFECT TRACTION WITH COMFORT TO YOUR FEET

TECHNICAL CONTRIBUTION OF  
**SPODOS**  
FOOT SCIENCE CENTER



1237.00

EN ISO 20345:2022 CE S3L HICI FOSR  
EU 36-48\_UK 3-13\_MP 225 - 315



**PROTECTIVE MIDSOLE**

**KEVLAR**  
(PT) Kevlar  
(ES) Kevlar  
(FR) Kevlar  
(DE) Kevlar  
(NL) Kevlar

**PROTECTIVE TOE CAP**

**STEEL**  
(PT) Aço  
(ES) Acero  
(FR) Acier  
(DE) Stahlkappe  
(NL) Staal

**SOLE**

**DOUBLE DENSITY PU**  
(PT) Dupla Densidade PU  
(ES) Doble Densidade PU  
(FR) Double Densité PU  
(DE) Zweikomponenten PU  
(NL) Tweekomponenten PU

**UPPER RAW MATERIAL**

**MATRIX KEVLAR + ANILINE LEATHER**  
(PT) Matrix Kevlar + Pele Anilina Preta  
(ES) Matrix Kevlar + Cuero Anilina Negro  
(FR) Matrix Kevlar + Cuir Aniline Noir  
(DE) Schwarz Matrix Kevlar + Aniline Leder  
(NL) Matrix Kevlar + Glad Leer Anilina Zwart

**LINNING MATERIAL**

**BLACK PACIFIC TEXTILE**  
(PT) Têxtil Pacífico Preto  
(ES) Textil Pacifico Negro  
(FR) Textile Pacific Noir  
(DE) Schwarz Pacific Textile  
(NL) Zwart Pacific Textiel

EN ISO 20345:2022 CE S3L HICI FOSR  
EU 36-47\_UK 3-12\_MP 225 - 307



1238.02



**PROTECTIVE MIDSOLE**

**KEVLAR**  
(PT) Kevlar  
(ES) Kevlar  
(FR) Kevlar  
(DE) Kevlar  
(NL) Kevlar

**PROTECTIVE TOE CAP**

**STEEL**  
(PT) Aço  
(ES) Acero  
(FR) Acier  
(DE) Stahlkappe  
(NL) Staal

**SOLE**

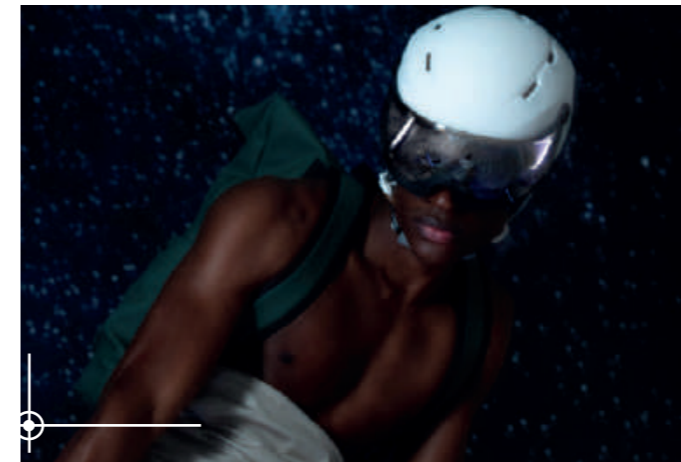
**DOUBLE DENSITY PU**  
(PT) Dupla Densidade PU  
(ES) Doble Densidade PU  
(FR) Double Densité PU  
(DE) Zweikomponenten PU  
(NL) Tweekomponenten PU

**UPPER RAW MATERIAL**

**BROWN NUBUCK LEATHER**  
(PT) Pele Nubuck Castanho  
(ES) Cuero Nubuck Marrón  
(FR) Cuir Nubuck Marron  
(DE) Braun Nubuck Leder  
(NL) Bruin Nubuckleer

**LINNING MATERIAL**

**ANILINE LEATHER**  
(PT) Pele Anilina  
(ES) Cuero Anilina  
(FR) Cuir Aniline  
(DE) Aniline Leder  
(NL) Aniline Leer





EASY CLEANING DEEP  
PROFILED SOLE

EXTRA PU PROTECTION  
ALL AROUND THE BOOT

1011.00



**PROTECTIVE  
MIDSOLE**

**STEEL**  
(PT) Aço  
(ES) Acero  
(FR) Acier  
(DE) Stahlkappe  
(NL) Staal

**PROTECTIVE  
TOE CAP**

**STEEL**  
(PT) Aço  
(ES) Acero  
(FR) Acier  
(DE) Stahlkappe  
(NL) Staal

**SOLE**

**DIRECT INJECTED  
PU**  
(PT) PU Diretamente Injetado  
(ES) PU inyectado directo  
(FR) PU Injecté Directement  
(DE) Direkt Eingespritztes PU  
(NL) Direct geïnjecteerd PU

**UPPER RAW  
MATERIAL**

**BLACK FULL  
GRAIN LEATHER**  
(PT) Pele de Flor Integral Preta  
(ES) Cuero Full Grain Negro  
(FR) Cuir Pleine Fleur Grainé Noir  
(DE) Schwarz Glattleder  
(NL) Zwart Volnerfleer

**LINNING  
MATERIAL**

**AQUATEX WATER-  
PROOF MEMBRANE**  
(PT) Membrana Impermeável Aquatex  
(ES) Membrana Impermeable Aquatex  
(FR) Membrane Impermeable Aquatex  
(DE) Aquatex Wasserdichte Membrane  
(NL) Aquatex Waterdicht Membraan



[ EXPLORATION HIGH ]

EN ISO 20345:2011 CE S3 SRC  
EU 39-48\_UK 6-13\_MP 247 - 315



1611.00



**PROTECTIVE  
MIDSOLE**

**STEEL**  
(PT) Aço  
(ES) Acero  
(FR) Acier  
(DE) Stahlkappe  
(NL) Staal

**PROTECTIVE  
TOE CAP**

**STEEL**  
(PT) Aço  
(ES) Acero  
(FR) Acier  
(DE) Stahlkappe  
(NL) Staal

**SOLE**

**DIRECT INJECTED  
PU**  
(PT) PU Diretamente Injetado  
(ES) PU inyectado directo  
(FR) PU Injecté Directement  
(DE) Direkt Eingespritztes PU  
(NL) Direct geïnjecteerd PU

**UPPER RAW  
MATERIAL**

**BLACK FULL  
GRAIN LEATHER**  
(PT) Pele de Flor Integral Preta  
(ES) Cuero Full Grain Negro  
(FR) Cuir Pleine Fleur Grainé Noir  
(DE) Schwarz Glattleder  
(NL) Zwart Volnerfleer

**LINNING  
MATERIAL**

**AQUATEX WATER-  
PROOF MEMBRANE**  
(PT) Membrana Impermeável Aquatex  
(ES) Membrana Impermeable Aquatex  
(FR) Membrane Impermeable Aquatex  
(DE) Aquatex Wasserdichte Membrane  
(NL) Aquatex Waterdicht Membraan





EN ISO 17249:2013 / AC:2014 CLASS 2  
EN ISO 20345:2011 CE S3 HI CI HRO SRC  
EU 39-48\_UK 6-13\_MP 247-315



1671.02

**PROTECTIVE MIDSOLE**

**STEEL**  
(PT) Aço  
(ES) Acero  
(FR) Acier  
(DE) Stahlkappe  
(NL) Staal

**PROTECTIVE TOE CAP**

**STEEL**  
(PT) Aço  
(ES) Acero  
(FR) Acier  
(DE) Stahlkappe  
(NL) Staal

**SOLE**

**DIRECT INJECTED PU + RUBBER**  
(PT) PU Diretamente Injetado + Borracha  
(ES) PU inyectado directo + Caucho  
(FR) PU Injecté Directement + Nitril  
(DE) Direkt Eingespritztes PU + Gummi  
(NL) Direct geïnjecteerd PU + Rubber

**UPPER RAW MATERIAL**

**BROWN CRAZY HORSE LEATHER**  
(PT) Pele Crazy Horse Castanha  
(ES) Cuero Crazy Horse Marrón  
(FR) Cuir Crazy Horse Marron  
(DE) Braun Crazy Horse Leder  
(NL) Bruin Crazy Horse Leer

**LINNING MATERIAL**

**SYMPATEX WATER-PROOF MEMBRANE**  
(PT) Membrana Impermeável Sympatex  
(ES) Membrana Impermeable Sympatex  
(FR) Membrane Impermeable Sympatex  
(DE) Sympatex Wasserdichte Membrane  
(NL) Sympatex Waterdicht Membraan

1632.02

320 mm



EN ISO 20345:2011 CE S3 CI HI WR HRO SRC WR  
EU 39-47\_UK 6-12\_MP 247-307



**PROTECTIVE MIDSOLE**

**STEEL**  
(PT) Aço  
(ES) Acero  
(FR) Acier  
(DE) Stahlkappe  
(NL) Staal

**PROTECTIVE TOE CAP**

**STEEL**  
(PT) Aço  
(ES) Acero  
(FR) Acier  
(DE) Stahlkappe  
(NL) Staal

**SOLE**

**DIRECT INJECTED PU + VIBRAM**  
(PT) PU Diretamente Injetado + Vibram  
(ES) PU inyectado directo + Vibram  
(FR) PU Injecté Directement + Vibram  
(DE) Direkt Eingespritztes PU + Vibram  
(NL) Direct geïnjecteerd PU + Vibram

**UPPER RAW MATERIAL**

**BROWN CRAZY HORSE LEATHER**  
(PT) Pele Crazy Horse Castanha  
(ES) Cuero Crazy Horse Marrón  
(FR) Cuir Crazy Horse Marron  
(DE) Braun Crazy Horse Leder  
(NL) Bruin Crazy Horse Leer

**LINNING MATERIAL**

**SYMPATEX WATER-PROOF MEMBRANE**  
(PT) Membrana Impermeável Sympatex  
(ES) Membrana Impermeable Sympatex  
(FR) Membrane Impermeable Sympatex  
(DE) Sympatex Wasserdichte Membrane  
(NL) Sympatex Waterdicht Membraan

[ DAINTREE 2.1 ]

EN ISO 17249:2013 / AC:2014 CLASS 1  
EN ISO 20345:2011 CE S3 HRO SRC  
EU 39-48\_UK 6-13\_MP 247-315



1053.90



PROTECTIVE MIDSOLE

**STEEL**  
(PT) Aço  
(ES) Acero  
(FR) Acier  
(DE) Stahlkappe  
(NL) Staal

PROTECTIVE TOE CAP

**STEEL**  
(PT) Aço  
(ES) Acero  
(FR) Acier  
(DE) Stahlkappe  
(NL) Staal

SOLE

**DOUBLE DENSITY PU + RUBBER**  
(PT) Dupla Densidade PU  
(ES) Doble Densidade PU  
(FR) Double Densité PU  
(DE) Zweikomponenten PU  
(NL) Tweekomponenten PU

UPPER RAW MATERIAL

**BLACK NUBUCK LEATHER**  
(PT) Pele Nubuck Preto  
(ES) Cuero Nubuck Negro  
(FR) Cuir Nubuck Noir  
(DE) Schwarz Nubuck Leder  
(NL) Zwart Nubuckleer

LINING MATERIAL

**BLACK CAMBRELE TEXTILE**  
(PT) Têxtil Cambrelle preto  
(ES) Textil Cambrelle negro  
(FR) Textile Cambrelle noir  
(DE) Schwarz Cambrelle Textil  
(NL) Textiel Cambrelle zwart

[ X6 ]

EN ISO 20345:2011 CE S3 SRC  
EU 36-47\_UK 3-12\_MP 225-307



1065.52



PROTECTIVE MIDSOLE

**STEEL**  
(PT) Aço  
(ES) Acero  
(FR) Acier  
(DE) Stahlkappe  
(NL) Staal

PROTECTIVE TOE CAP

**STEEL**  
(PT) Aço  
(ES) Acero  
(FR) Acier  
(DE) Stahlkappe  
(NL) Staal

SOLE

**DOUBLE DENSITY PU**  
(PT) Dupla Densidade PU  
(ES) Doble Densidade PU  
(FR) Double Densité PU  
(DE) Zweikomponenten PU  
(NL) Tweekomponenten PU

UPPER RAW MATERIAL

**BROWN NUBUCK LEATHER**  
(PT) Pele Nubuck Castanho  
(ES) Cuero Nubuck Marrón  
(FR) Cuir Nubuck Marron  
(DE) Braun Nubuck Leder  
(NL) Bruin Nubuckleer

LINING MATERIAL

**PACIFIC TEXTILE**  
(PT) Têxtil Pacifico  
(ES) Textil Pacific  
(FR) Textile Pacific  
(DE) Pacific Textile  
(NL) Pacific Textiel

[ SHERWOOD ]

EN ISO 17249:2013 / AC:2014 CLASS 3  
EN ISO 20345:2022 CE S3 HRO SRA WR  
EU 39-47\_UK 6-12\_MP 247-307



1053.60



PROTECTIVE MIDSOLE

**STEEL**  
(PT) Aço  
(ES) Acero  
(FR) Acier  
(DE) Stahlkappe  
(NL) Staal

PROTECTIVE TOE CAP

**STEEL**  
(PT) Aço  
(ES) Acero  
(FR) Acier  
(DE) Stahlkappe  
(NL) Staal

SOLE

**DIRECT INJECTED PU + RUBBER**  
(PT) PU Diretamente Injetado + Borracha  
(ES) PU inyectado directo + Caucho  
(FR) PU Injecté Directement + Nitril  
(DE) Direkt Eingespritztes PU + Gummi  
(NL) Direct geïnjecteerd PU + Rubber

UPPER RAW MATERIAL

**BLACK FULL GRAIN LEATHER**  
(PT) Pele de Flor Integral Preta  
(ES) Cuero Full Grain Negro  
(FR) Cuir Pleine Fleur Grainé Noir  
(DE) Schwarz Glattleder  
(NL) Zwart Volnerleer

LINING MATERIAL

**SYMPATEX WATER-PROOF MEMBRANE**  
(PT) Membrana Impermeável Sympatex  
(ES) Membrana Impermeable Sympatex  
(FR) Membrane Impermeable Sympatex  
(DE) Sympatex Wasserdichte Membrane  
(NL) Sympatex Waterdicht Membran



[ ICELANDIC ]

EN ISO 20345:2011 CE S3 CI SRC  
EU 36-50\_UK 3-14 1/2\_MP 225-330



2 SIDE ZIPS



1625.00

PROTECTIVE MIDSOLE

**STEEL**  
(PT) Aço  
(ES) Acero  
(FR) Acier  
(DE) Stahlkappe  
(NL) Staal

PROTECTIVE TOE CAP

**COMPOSITE**  
(PT) Composite  
(ES) Composite  
(FR) Composite  
(DE) Kunststoffkappe  
(NL) Composit

SOLE

**DOUBLE DENSITY PU**  
(PT) Dupla Densidade PU  
(ES) Doble Densidade PU  
(FR) Double Densité PU  
(DE) Zweikomponenten PU  
(NL) Tweekomponenten PU

UPPER RAW MATERIAL

**BLACK FULL GRAIN LEATHER**  
(PT) Pele de Flor Integral Preta  
(ES) Cuero Full Grain Negro  
(FR) Cuir Pleine Fleur Grainé Noir  
(DE) Schwarz Glattleder  
(NL) Zwart Volnerfleer

LINING MATERIAL

**NATURAL LAMBSKIN**  
(PT) Pele Natural de Carneiro  
(ES) Piel de Cordero Natural  
(FR) Peau de Mouton Naturelle  
(DE) Natürliches Lamm Futter  
(NL) Natuurlijk Lamsleer



FF / RF  
FIRE FIGHTERS  
RANGE FORCE



2018.20

[ FÉNIX BLACK 2.1 ]

EN ISO 15090:2012 TIPO 2 HI3 F2A  
EN ISO 20345:2011 CE S3 WR  
HI CI AN M HRO SRC  
EU 35-47\_UK 2 1/2-12\_MP 217 - 307



PROTECTIVE MIDSOLE

**KEVLAR**  
(PT) Kevlar  
(ES) Kevlar  
(FR) Kevlar  
(DE) Kevlar  
(NL) Kevlar

PROTECTIVE TOE CAP

**COMPOSITE**  
(PT) Composite  
(ES) Composite  
(FR) Composite  
(DE) Kunststoffkappe  
(NL) Composit

SOLE

**DIRECT VULCANIZED FIRE-RETARDANT RUBBER**  
(PT) Borracha Ignífuga Diretamente Vulcanizada  
(ES) Caucho ignífugo Vulcanizado Directo  
(FR) Nitril Vulcanisé Directment  
(DE) Vulkanisiertes Feuerhemmender Gummi  
(NL) Direct Gevulkaniseerd Brandvertragend Rubber

UPPER RAW MATERIAL

**BLACK FULL GRAIN LEATHER**  
(PT) Pele de Flor Integral Preta  
(ES) Cuero Full Grain Negro  
(FR) Cuir Pleine Fleur Grainé Noir  
(DE) Schwarz Glattleder  
(NL) Zwart Volnerfleer

LINING MATERIAL

**SYMPATEX WATER-PROOF MEMBRANE**  
(PT) Membrana Impermeável Sympatex  
(ES) Membrana Impermeable Sympatex  
(FR) Membrane Impermeable Sympatex  
(DE) Sympatex Wasserdichte Membran  
(NL) Sympatex Waterdicht Membran



NEW  
PRODUCT

2018.30



[ FÉNIX 5.1 PRO ]

EN ISO 20345:2011 CE S3 HI CI HRO  
AN M SRC WR  
EN ISO 15090:2012 CE TIPO 2 HI3 F2A  
EN ISO 17249:2013/AC:2014 CLASSE 2  
EU 36-48\_UK 3-13\_MP 225 - 315



ANKLE  
PROTECTION



METATARSAL  
PROTECTION



FIREFIGHTERS



CHAINSAW  
PROTECTION



CLIMA CORK  
SYSTEM



sympatex®



METAL FREE  
METAL FREE

PROTECTIVE  
MIDSOLE

**KEVLAR**  
(PT) Kevlar  
(ES) Kevlar  
(FR) Kevlar  
(DE) Kevlar  
(NL) Kevlar

PROTECTIVE  
TOE CAP

**FIBERGLASS**  
(PT) Fibra de vidro  
(ES) Fibra de Vidrio  
(FR) Fibre de Verre  
(DE) Glasfaser  
(NL) Glasvezel

SOLE

**FIREFOX - VIBRAM  
FIRE-RETARDANT RUBBER**  
(PT) Borracha ignífuga - Vibram  
(ES) Caucho ignífugo - Vibram  
(FR) Nitril ignífuge - Vibram  
(DE) Feuerhemmender Gummi - Vibram  
(NL) Brandvertragend rubber - Vibram

UPPER RAW  
MATERIAL

**BLACK FULL  
GRAIN LEATHER**  
(PT) Pele de Flor Integral Preta  
(ES) Cuero Full Grain Negro  
(FR) Cuir Pleine Fleur Grainé Noir  
(DE) Schwarz Glattleder  
(NL) Zwart Volnerfleer

LINNING  
MATERIAL

**SYMPATEX WATER-  
PROOF MEMBRANE**  
(PT) Membrana Impermeável Sympatex  
(ES) Membrana Impermeable Sympatex  
(FR) Membrane Impermeable Sympatex  
(DE) Sympatex Wasserdichte Membrane  
(NL) Sympatex Waterdicht Membran

NEW  
PRODUCT

2019.00



[ FLAME 5.1 ]

EN ISO 15090:2012 TIPO 2 HI3 F2A  
EN ISO 20345:2011 CE AN CI WR HRO SRA  
EU 36-48\_UK 3-13\_MP 225 - 315



ANKLE  
PROTECTION



FIREFIGHTERS



CLIMA CORK  
SYSTEM



sympatex®



METAL FREE  
METAL FREE

PROTECTIVE  
MIDSOLE

**KEVLAR**  
(PT) Kevlar  
(ES) Kevlar  
(FR) Kevlar  
(DE) Kevlar  
(NL) Kevlar

PROTECTIVE  
TOE CAP

**FIBERGLASS**  
(PT) Fibra de vidro  
(ES) Fibra de Vidrio  
(FR) Fibre de Verre  
(DE) Glasfaser  
(NL) Glasvezel

SOLE

**FIREFOX - VIBRAM  
FIRE-RETARDANT RUBBER**  
(PT) Borracha ignífuga - Vibram  
(ES) Caucho ignífugo - Vibram  
(FR) Nitril ignífuge - Vibram  
(DE) Feuerhemmender Gummi - Vibram  
(NL) Brandvertragend rubber - Vibram

UPPER RAW  
MATERIAL

**BLACK FULL  
GRAIN LEATHER**  
(PT) Pele de Flor Integral Preta  
(ES) Cuero Full Grain Negro  
(FR) Cuir Pleine Fleur Grainé Noir  
(DE) Schwarz Glattleder  
(NL) Zwart Volnerfleer

LINNING  
MATERIAL

**SYMPATEX WATER-  
PROOF MEMBRANE**  
(PT) Membrana Impermeável Sympatex  
(ES) Membrana Impermeable Sympatex  
(FR) Membrane Impermeable Sympatex  
(DE) Sympatex Wasserdichte Membrane  
(NL) Sympatex Waterdicht Membran

NEW  
PRODUCT

2018.40



[ FÉNIX 5.1 ]

EN ISO 15090:2012 TIPO 2 HI3 F2A  
EN ISO 20345:2011 CE AN CI WR HRO SRA  
EU 36-48\_UK 3-13\_MP 225 - 315



ANKLE  
PROTECTION



METATARSAL  
PROTECTION



FIREFIGHTERS



CLIMA CORK  
SYSTEM



sympatex®



METAL FREE  
METAL FREE

PROTECTIVE  
MIDSOLE

**KEVLAR**  
(PT) Kevlar  
(ES) Kevlar  
(FR) Kevlar  
(DE) Kevlar  
(NL) Kevlar

PROTECTIVE  
TOE CAP

**FIBERGLASS**  
(PT) Fibra de vidro  
(ES) Fibra de Vidrio  
(FR) Fibre de Verre  
(DE) Glasfaser  
(NL) Glasvezel

SOLE

**FIREFOX - VIBRAM  
FIRE-RETARDANT RUBBER**  
(PT) Borracha ignífuga - Vibram  
(ES) Caucho ignífugo - Vibram  
(FR) Nitril ignífuge - Vibram  
(DE) Feuerhemmender Gummi - Vibram  
(NL) Brandvertragend rubber - Vibram

UPPER RAW  
MATERIAL

**BLACK FULL  
GRAIN LEATHER**  
(PT) Pele de Flor Integral Preta  
(ES) Cuero Full Grain Negro  
(FR) Cuir Pleine Fleur Grainé Noir  
(DE) Schwarz Glattleder  
(NL) Zwart Volnerfleer

LINNING  
MATERIAL

**SYMPATEX WATER-  
PROOF MEMBRANE**  
(PT) Membrana Impermeável Sympatex  
(ES) Membrana Impermeable Sympatex  
(FR) Membrane Impermeable Sympatex  
(DE) Sympatex Wasserdichte Membrane  
(NL) Sympatex Waterdicht Membran

NEW  
PRODUCT

2019.00



[ PATROL 5.1 ]

EN ISO 15090:2012 TIPO 2 HI3 F2A  
EN ISO 20345:2011 CE AN CI WR HRO SRA  
EU 36-48\_UK 3-13\_MP 225 - 315



FIREFIGHTERS



CLIMA CORK  
SYSTEM



sympatex®



METAL FREE  
METAL FREE

PROTECTIVE  
MIDSOLE

**KEVLAR**  
(PT) Kevlar  
(ES) Kevlar  
(FR) Kevlar  
(DE) Kevlar  
(NL) Kevlar

PROTECTIVE  
TOE CAP

**FIBERGLASS**  
(PT) Fibra de vidro  
(ES) Fibra de Vidrio  
(FR) Fibre de Verre  
(DE) Glasfaser  
(NL) Glasvezel

SOLE

**FIREFOX - VIBRAM  
FIRE-RETARDANT RUBBER**  
(PT) Borracha ignífuga - Vibram  
(ES) Caucho ignífugo - Vibram  
(FR) Nitril ignífuge - Vibram  
(DE) Feuerhemmender Gummi - Vibram  
(NL) Brandvertragend rubber - Vibram

UPPER RAW  
MATERIAL

**BLACK FULL  
GRAIN LEATHER**  
(PT) Pele de Flor Integral Preta  
(ES) Cuero Full Grain Negro  
(FR) Cuir Pleine Fleur Grainé Noir  
(DE) Schwarz Glattleder  
(NL) Zwart Volnerfleer

LINNING  
MATERIAL

**SYMPATEX WATER-  
PROOF MEMBRANE**  
(PT) Membrana Impermeável Sympatex  
(ES) Membrana Impermeable Sympatex  
(FR) Membrane Impermeable Sympatex  
(DE) Sympatex Wasserdichte Membrane  
(NL) Sympatex Waterdicht Membran

NEW  
PRODUCT

[ PATROL 2.1 ]

EN ISO 20347: 2011 O3 HRO SRC  
EU 35-48\_UK 2 1/2-13\_MP 217 - 315



INTERNAL ZIPPER



1076.65

PROTECTIVE  
MIDSOLE

KEVLAR  
(PT) Kevlar  
(ES) Kevlar  
(FR) Kevlar  
(DE) Kevlar  
(NL) Kevlar

PROTECTIVE  
TOE CAP

-  
(PT) -  
(ES) -  
(FR) -  
(DE) -  
(NL) -

SOLE

DIRECT INJECTED  
PU + RUBBER  
(PT) PU Diretamente Injetado + Borracha  
(ES) PU inyectado directo + Caucho  
(FR) PU Injecté Directement + Nitril  
(DE) Direkt Eingespritztes PU + Gummi  
(NL) Direct geïnjecteerd PU + Rubber

UPPER RAW  
MATERIAL

BLACK FULL  
GRAIN LEATHER  
(PT) Pele de Flor Integral Preta  
(ES) Cuero Full Grain Negro  
(FR) Cuir Pleine Fleur Grainé Noir  
(DE) Schwarz Glattleder  
(NL) Zwart Volnerfleer

LINING  
MATERIAL

BLACK CAMBRELLE  
TEXTILE  
(PT) Têxtil Cambrelle preto  
(ES) Textil Cambrelle negro  
(FR) Textile Cambrelle noir  
(DE) Schwarz Cambrelle Textil  
(NL) Textiel Cambrelle zwart

[ PATROL HIGHWAY 22 ]

EN ISO 20347: 2011 CE O3 HRO SRC  
EU 35-48\_UK 2 1/2-13\_MP 217 - 315



INTERNAL ZIPPER



1076.65

PROTECTIVE  
MIDSOLE

KEVLAR  
(PT) Kevlar  
(ES) Kevlar  
(FR) Kevlar  
(DE) Kevlar  
(NL) Kevlar

PROTECTIVE  
TOE CAP

-  
(PT) -  
(ES) -  
(FR) -  
(DE) -  
(NL) -

SOLE

DIRECT INJECTED  
PU + RUBBER  
(PT) PU Diretamente Injetado + Borracha  
(ES) PU inyectado directo + Caucho  
(FR) PU Injecté Directement + Nitril  
(DE) Direkt Eingespritztes PU + Gummi  
(NL) Direct geïnjecteerd PU + Rubber

UPPER RAW  
MATERIAL

BLACK FULL  
GRAIN LEATHER  
(PT) Pele de Flor Integral Preta  
(ES) Cuero Full Grain Negro  
(FR) Cuir Pleine Fleur Grainé Noir  
(DE) Schwarz Glattleder  
(NL) Zwart Volnerfleer

LINING  
MATERIAL

BLACK CAMBRELLE  
TEXTILE  
(PT) Têxtil Cambrelle preto  
(ES) Textil Cambrelle negro  
(FR) Textile Cambrelle noir  
(DE) Schwarz Cambrelle Textil  
(NL) Textiel Cambrelle zwart

NEW  
PRODUCT

[ SPACE TROOPER ]

EN ISO 20347: 2011 O3  
EU 35-47\_UK 2 1/2-12\_MP 217 - 307



2020.00

PROTECTIVE  
MIDSOLE

KEVLAR  
(PT) Kevlar  
(ES) Kevlar  
(FR) Kevlar  
(DE) Kevlar  
(NL) Kevlar

PROTECTIVE  
TOE CAP

-  
(PT) -  
(ES) -  
(FR) -  
(DE) -  
(NL) -

SOLE

TPU +  
EVA PHYLON  
(PT) TPU + Eva Phylon  
(ES) TPU + Eva Phylon  
(FR) TPU + Eva Phylon  
(DE) TPU + Eva Phylon  
(NL) TPU + Eva Phylon

UPPER RAW  
MATERIAL

HI-TECH  
TEXTILE  
(PT) Têxtil Hi-Tech  
(ES) Textil Hi-Tech  
(FR) Textile Hi-Tech  
(DE) High-Tech-Textil  
(NL) Hi-Tech textiel

LINING  
MATERIAL

SYMPATEX WATER-  
PROOF MEMBRANE  
(PT) Membrana Impermeável Sympatex  
(ES) Membrana Impermeable Sympatex  
(FR) Membrane Impermeable Sympatex  
(DE) Sympatex Wasserdichte Membrane  
(NL) Sympatex Waterdicht Membran



1675.10

PROTECTIVE  
MIDSOLE

KEVLAR  
(PT) Kevlar  
(ES) Kevlar  
(FR) Kevlar  
(DE) Kevlar  
(NL) Kevlar

PROTECTIVE  
TOE CAP

-  
(PT) -  
(ES) -  
(FR) -  
(DE) -  
(NL) -

SOLE

DIRECT INJECTED  
PU + VIBRAM  
(PT) PU Diretamente Injetado + Vibram  
(ES) PU inyectado directo + Vibram  
(FR) PU Injecté Directement + Vibram  
(DE) Direkt Eingespritztes PU + Vibram  
(NL) Direct geïnjecteerd PU + Vibram

UPPER RAW  
MATERIAL

PUTEK VHR  
TEXTILE  
(PT) Têxtil Putek VHR  
(ES) Textil Putek VHR  
(FR) Textile Putek VHR  
(DE) Putek VHR Textil  
(NL) Putek VHR Textiel

LINING  
MATERIAL

SYMPATEX WATER-  
PROOF MEMBRANE  
(PT) Membrana Impermeável Sympatex  
(ES) Membrana Impermeable Sympatex  
(FR) Membrane Impermeable Sympatex  
(DE) Sympatex Wasserdichte Membrane  
(NL) Sympatex Waterdicht Membran

[ S.A.S. BLACK BOOT ]

EN ISO 20347: 2011 CE O3 HRO SRC WR  
EU 36-47\_UK 3-12\_MP 225-307



LACICC  
SHOE LACES  
STORAGE SYSTEM



1675.10

PROTECTIVE  
MIDSOLE

KEVLAR  
(PT) Kevlar  
(ES) Kevlar  
(FR) Kevlar  
(DE) Kevlar  
(NL) Kevlar

PROTECTIVE  
TOE CAP

-  
(PT) -  
(ES) -  
(FR) -  
(DE) -  
(NL) -

SOLE

DIRECT INJECTED  
PU + VIBRAM  
(PT) PU Diretamente Injetado + Vibram  
(ES) PU inyectado directo + Vibram  
(FR) PU Injecté Directement + Vibram  
(DE) Direkt Eingespritztes PU + Vibram  
(NL) Direct geïnjecteerd PU + Vibram

UPPER RAW  
MATERIAL

PUTEK VHR  
TEXTILE  
(PT) Têxtil Putek VHR  
(ES) Textil Putek VHR  
(FR) Textile Putek VHR  
(DE) Putek VHR Textil  
(NL) Putek VHR Textiel

LINING  
MATERIAL

SYMPATEX WATER-  
PROOF MEMBRANE  
(PT) Membrana Impermeável Sympatex  
(ES) Membrana Impermeable Sympatex  
(FR) Membrane Impermeable Sympatex  
(DE) Sympatex Wasserdichte Membrane  
(NL) Sympatex Waterdicht Membran

[ NEW PROTECTOR ]

EN ISO 20345:2022 CE S3L CI HI HRO SC SR  
EU 39-47\_UK 6-12\_MP 247-307

1023.50



PROTECTIVE MIDSOLE

**STEEL**  
(PT) Aço  
(ES) Acero  
(FR) Acier  
(DE) Stahlkappe  
(NL) Staal

PROTECTIVE TOE CAP

**STEEL**  
(PT) Aço  
(ES) Acero  
(FR) Acier  
(DE) Stahlkappe  
(NL) Staal

SOLE

**DIRECT INJECTED PU + RUBBER**  
(PT) PU Diretamente Injetado + Borracha  
(ES) PU inyectado directo + Caucho  
(FR) PU Injecté Directement + Nitril  
(DE) Direkt Eingespritztes PU + Gummi  
(NL) Direct geïnjecteerd PU + Rubber

UPPER RAW MATERIAL

**BLACK LEATHER**  
(PT) Pele Preta  
(ES) Cuero Negro  
(FR) Cuir Noir  
(DE) Schwarz Leder  
(NL) Zwart Leer

LINING MATERIAL

**BLACK CAMBRELLE TEXTILE**  
(PT) Têxtil Cambrelle preto  
(ES) Textil Cambrelle negro  
(FR) Textile Cambrelle noir  
(DE) Schwarz Cambrelle Textil  
(NL) Textiel Cambrelle zwart

[ NEW BARCELONA ]

EN ISO 20345:2022 CE S3L CI HI HRO SC SR  
EU 39-47\_UK 6-12\_MP 247-307

1052.01



PROTECTIVE MIDSOLE

**KEVLAR**  
(PT) Kevlar  
(ES) Kevlar  
(FR) Kevlar  
(DE) Kevlar  
(NL) Kevlar

PROTECTIVE TOE CAP

**STEEL**  
(PT) Aço  
(ES) Acero  
(FR) Acier  
(DE) Stahlkappe  
(NL) Staal

SOLE

**DIRECT INJECTED PU + RUBBER**  
(PT) PU Diretamente Injetado + Borracha  
(ES) PU inyectado directo + Caucho  
(FR) PU Injecté Directement + Nitril  
(DE) Direkt Eingespritztes PU + Gummi  
(NL) Direct geïnjecteerd PU + Rubber

UPPER RAW MATERIAL

**BLACK LEATHER**  
(PT) Pele Preta  
(ES) Cuero Negro  
(FR) Cuir Noir  
(DE) Schwarz Leder  
(NL) Zwart Leer

LINING MATERIAL

**VADICONFORT GREY TEXTILE**  
(PT) Têxtil Cinza Vadiconfort  
(ES) Textil Gris Vadiconfort  
(FR) Textile Vadiconfort Gris  
(DE) Grau Vadiconfort textil  
(NL) Textiel Vadiconfort

10

[ WOMAN ]



[ LYNX CLAY ]

EN ISO 20345:2022 CE S3L HI CI FO SR  
EU 35-42\_UK 2 1/2-8\_MP 217 - 270



NEW  
PRODUCT

1257.82



PROTECTIVE  
MIDSOLE

**KEVLAR**  
(PT) Kevlar  
(ES) Kevlar  
(FR) Kevlar  
(DE) Kevlar  
(NL) Kevlar

PROTECTIVE  
TOE CAP

**COMPOSITE**  
(PT) Composite  
(ES) Composite  
(FR) Composite  
(DE) Kunststoffkappe  
(NL) Composiet

SOLE

**DOUBLE DENSITY  
PU**  
(PT) Dupla Densidade PU  
(ES) Doble Densidade PU  
(FR) Double Densité PU  
(DE) Zweikomponenten PU  
(NL) Tweekomponenten PU

UPPER RAW  
MATERIAL

**BREATHABLE  
TEXTILE**  
(PT) Têxtil respirável  
(ES) Textil respirable  
(FR) Textile respirant  
(DE) Atmungsaktiv textil  
(NL) Ademend textiel

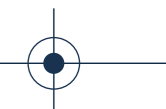
LINING  
MATERIAL

**BREATHABLE  
TEXTILE**  
(PT) Têxtil respirável  
(ES) Textil respirable  
(FR) Textile respirant  
(DE) Atmungsaktiv textil  
(NL) Ademend textiel

1118.10

[ BIANCA ]

EN ISO 20345:2011 CE S3 SRC  
EU 36-42\_UK 3-8\_MP 225-270



PROTECTIVE  
MIDSOLE

**KEVLAR**  
(PT) Kevlar  
(ES) Kevlar  
(FR) Kevlar  
(DE) Kevlar  
(NL) Kevlar

PROTECTIVE  
TOE CAP

**STEEL**  
(PT) Aço  
(ES) Acero  
(FR) Acier  
(DE) Stahlkappe  
(NL) Staal

SOLE

**DIRECT INJECTED  
PU**  
(PT) PU Diretamente Injetado  
(ES) PU inyectado directo  
(FR) PU Injecté Directement  
(DE) Direkt Eingespritztes PU  
(NL) Direct geïnjecteerd PU

UPPER RAW  
MATERIAL

**BLACK FULL  
GRAIN LEATHER**  
(PT) Pele de Flor Integral Preta  
(ES) Cuero Full Grain Negro  
(FR) Cuir Pleine Fleur Grainé Noir  
(DE) Schwarz Glattleder  
(NL) Zwart Volnerfleer

LINING  
MATERIAL

**RED ANILINE  
LEATHER**  
(PT) Pele Anilina Vermetha  
(ES) Cuero Anilina Rojo  
(FR) Cuir Aniline Rouge  
(DE) Rot Aniline Leder  
(NL) Rood Aniline Leer

NEW  
PRODUCT

1257.84

[ LYNX TERRACOTA ]

EN ISO 20345:2022 CE S3L HI CI FO SR  
EU 35-42\_UK 2 1/2-8\_MP 217 - 270



PROTECTIVE  
MIDSOLE

**KEVLAR**  
(PT) Kevlar  
(ES) Kevlar  
(FR) Kevlar  
(DE) Kevlar  
(NL) Kevlar

PROTECTIVE  
TOE CAP

**COMPOSITE**  
(PT) Composite  
(ES) Composite  
(FR) Composite  
(DE) Kunststoffkappe  
(NL) Composiet

SOLE

**DOUBLE DENSITY  
PU**  
(PT) Dupla Densidade PU  
(ES) Doble Densidade PU  
(FR) Double Densité PU  
(DE) Zweikomponenten PU  
(NL) Tweekomponenten PU

UPPER RAW  
MATERIAL

**BREATHABLE  
TEXTILE**  
(PT) Têxtil respirável  
(ES) Textil respirable  
(FR) Textile respirant  
(DE) Atmungsaktiv textil  
(NL) Ademend textiel

LINING  
MATERIAL

**BREATHABLE  
TEXTILE**  
(PT) Têxtil respirável  
(ES) Textil respirable  
(FR) Textile respirant  
(DE) Atmungsaktiv textil  
(NL) Ademend textiel

6118.40

[ SARAH ]

EN ISO 20345:2011 CE S3 SRC  
EU 36-42\_UK 3-8\_MP 225-270



PROTECTIVE  
MIDSOLE

**KEVLAR**  
(PT) Kevlar  
(ES) Kevlar  
(FR) Kevlar  
(DE) Kevlar  
(NL) Kevlar

PROTECTIVE  
TOE CAP

**STEEL**  
(PT) Aço  
(ES) Acero  
(FR) Acier  
(DE) Stahlkappe  
(NL) Staal

SOLE

**DIRECT INJECTED  
PU**  
(PT) PU Diretamente Injetado  
(ES) PU inyectado directo  
(FR) PU Injecté Directement  
(DE) Direkt Eingespritztes PU  
(NL) Direct geïnjecteerd PU

UPPER RAW  
MATERIAL

**BLACK FULL  
GRAIN LEATHER**  
(PT) Pele de Flor Integral Preta  
(ES) Cuero Full Grain Negro  
(FR) Cuir Pleine Fleur Grainé Noir  
(DE) Schwarz Glattleder  
(NL) Zwart Volnerfleer

LINING  
MATERIAL

**RED ANILINE  
LEATHER**  
(PT) Pele Anilina Vermetha  
(ES) Cuero Anilina Rojo  
(FR) Cuir Aniline Rouge  
(DE) Rot Aniline Leder  
(NL) Rood Aniline Leer

[ CYNDI ]

EN ISO 20345:2011 CE S3 SRC  
EU 36-42\_UK 3-8\_MP 225-270



1016.10



PROTECTIVE MIDSOLE

**KEVLAR**  
(PT) Kevlar  
(ES) Kevlar  
(FR) Kevlar  
(DE) Kevlar  
(NL) Kevlar

PROTECTIVE TOE CAP

**STEEL**  
(PT) Aço  
(ES) Acero  
(FR) Acier  
(DE) Stahlkappe  
(NL) Staal

SOLE

**DIRECT INJECTED PU**  
(PT) PU Diretamente Injetado  
(ES) PU inyectado directo  
(FR) PU Injecté Directement  
(DE) Direkt Eingespritztes PU  
(NL) Direct geïnjecteerd PU

UPPER RAW MATERIAL

**BLACK FULL GRAIN LEATHER**  
(PT) Pele de Flor Integral Preta  
(ES) Cuero Full Grain Negro  
(FR) Cuir Pleine Fleur Grainé Noir  
(DE) Schwarz Glattleder  
(NL) Zwart Volnerfleer

LINING MATERIAL

**RED ANILINE LEATHER**  
(PT) Pele Anilina Vermetha  
(ES) Cuero Anilina Rojo  
(FR) Cuir Aniline Rouge  
(DE) Rot Aniline Leder  
(NL) Rood Aniline Leer

[ BARBARA ]

EN ISO 20345:2011 CE S3 SRC  
EU 36-42\_UK 3-8\_MP 225-270



1118.10



PROTECTIVE MIDSOLE

**KEVLAR**  
(PT) Kevlar  
(ES) Kevlar  
(FR) Kevlar  
(DE) Kevlar  
(NL) Kevlar

PROTECTIVE TOE CAP

**STEEL**  
(PT) Aço  
(ES) Acero  
(FR) Acier  
(DE) Stahlkappe  
(NL) Staal

SOLE

**DIRECT INJECTED PU**  
(PT) PU Diretamente Injetado  
(ES) PU inyectado directo  
(FR) PU Injecté Directement  
(DE) Direkt Eingespritztes PU  
(NL) Direct geïnjecteerd PU

UPPER RAW MATERIAL

**BLACK FULL GRAIN LEATHER**  
(PT) Pele de Flor Integral Preta  
(ES) Cuero Full Grain Negro  
(FR) Cuir Pleine Fleur Grainé Noir  
(DE) Schwarz Glattleder  
(NL) Zwart Volnerfleer

LINING MATERIAL

**RED ANILINE LEATHER**  
(PT) Pele Anilina Vermetha  
(ES) Cuero Anilina Rojo  
(FR) Cuir Aniline Rouge  
(DE) Rot Aniline Leder  
(NL) Rood Aniline Leer

[ LUCY ]

EN ISO 20345:2011 CE S3 SRC  
EU 36-42\_UK 3-8\_MP 225-270



1021.10



PROTECTIVE MIDSOLE

**KEVLAR**  
(PT) Kevlar  
(ES) Kevlar  
(FR) Kevlar  
(DE) Kevlar  
(NL) Kevlar

PROTECTIVE TOE CAP

**STEEL**  
(PT) Aço  
(ES) Acero  
(FR) Acier  
(DE) Stahlkappe  
(NL) Staal

SOLE

**DIRECT INJECTED PU**  
(PT) PU Diretamente Injetado  
(ES) PU inyectado directo  
(FR) PU Injecté Directement  
(DE) Direkt Eingespritztes PU  
(NL) Direct geïnjecteerd PU

UPPER RAW MATERIAL

**BLACK FULL GRAIN LEATHER**  
(PT) Pele de Flor Integral Preta  
(ES) Cuero Full Grain Negro  
(FR) Cuir Pleine Fleur Grainé Noir  
(DE) Schwarz Glattleder  
(NL) Zwart Volnerfleer

LINING MATERIAL

**RED ANILINE LEATHER**  
(PT) Pele Anilina Vermetha  
(ES) Cuero Anilina Rojo  
(FR) Cuir Aniline Rouge  
(DE) Rot Aniline Leder  
(NL) Rood Aniline Leer

[ SANDY ]

EN ISO 20345:2011 CE S2P SRC  
EU 36-42\_UK 3-8\_MP 225-270



1036.30



PROTECTIVE MIDSOLE

**KEVLAR**  
(PT) Kevlar  
(ES) Kevlar  
(FR) Kevlar  
(DE) Kevlar  
(NL) Kevlar

PROTECTIVE TOE CAP

**STEEL**  
(PT) Aço  
(ES) Acero  
(FR) Acier  
(DE) Stahlkappe  
(NL) Staal

SOLE

**DIRECT INJECTED PU**  
(PT) PU Diretamente Injetado  
(ES) PU inyectado directo  
(FR) PU Injecté Directement  
(DE) Direkt Eingespritztes PU  
(NL) Direct geïnjecteerd PU

UPPER RAW MATERIAL

**BLACK FULL GRAIN LEATHER**  
(PT) Pele de Flor Integral Preta  
(ES) Cuero Full Grain Negro  
(FR) Cuir Pleine Fleur Grainé Noir  
(DE) Schwarz Glattleder  
(NL) Zwart Volnerfleer

LINING MATERIAL

**BLACK ANILINE LEATHER**  
(PT) Pele Anilina Preta  
(ES) Cuero Anilina Negro  
(FR) Cuir Aniline Noir  
(DE) Schwarz Aniline Leder  
(NL) Zwart Aniline Leer

[ EVA ]

EN ISO 20345:2011 CE S2P SRC  
EU 36-42\_UK 3-8\_MP 225-270



1153.10



PROTECTIVE MIDSOLE

**KEVLAR**  
(PT) Kevlar  
(ES) Kevlar  
(FR) Kevlar  
(DE) Kevlar  
(NL) Kevlar

PROTECTIVE TOE CAP

**STEEL**  
(PT) Aço  
(ES) Acero  
(FR) Acier  
(DE) Stahlkappe  
(NL) Staal

SOLE

**DIRECT INJECTED PU**  
(PT) PU Diretamente Injetado  
(ES) PU inyectado directo  
(FR) PU Injecté Directement  
(DE) Direkt Eingespritztes PU  
(NL) Direct geïnjecteerd PU

UPPER RAW MATERIAL

**BLACK FULL GRAIN LEATHER**  
(PT) Pele de Flor Integral Preta  
(ES) Cuero Full Grain Negro  
(FR) Cuir Pleine Fleur Grainé Noir  
(DE) Schwarz Glattleder  
(NL) Zwart Volnerfleer

LINING MATERIAL

**BLACK ANILINE LEATHER**  
(PT) Pele Anilina Preta  
(ES) Cuero Anilina Negro  
(FR) Cuir Aniline Noir  
(DE) Schwarz Aniline Leder  
(NL) Zwart Aniline Leer

[ LEIA 22 ]

EN ISO 20345:2022 CE S3L HI CI FO SR  
EU 35-42\_UK 2 1/2-8\_MP 217-270



1215.18



PROTECTIVE MIDSOLE

**KEVLAR**  
(PT) Kevlar  
(ES) Kevlar  
(FR) Kevlar  
(DE) Kevlar  
(NL) Kevlar

PROTECTIVE TOE CAP

**COMPOSITE**  
(PT) Composite  
(ES) Composite  
(FR) Composite  
(DE) Kunststoffkappe  
(NL) Composiet

SOLE

**DOUBLE DENSITY PU**  
(PT) Dupla Densidade PU  
(ES) Doble Densidade PU  
(FR) Double Densité PU  
(DE) Zweikomponenten PU  
(NL) Tweekomponenten PU

UPPER RAW MATERIAL

**PINK HIGH-TECH TEXTILE**  
(PT) Têxtil High-Tech Rosa  
(ES) Textil High-Tech Rosa  
(FR) Textile High-Tech Rose  
(DE) Rosa High-Tech Textil  
(NL) Roze High Tech Textiel

LINING MATERIAL

**BLACK DRI-LEX TEXTILE**  
(PT) Têxtil Dri-Lex preto  
(ES) Textil Dri-Lex negro  
(FR) Textile Dri-Lex noir  
(DE) Schwarz Dri-Lex textil  
(NL) Textiel Dri-Lex zwart

[ MICHELLE ]

EN ISO 20345:2011 CE S3 HRO SRC  
EU 35-42\_UK 2 1/2-8\_MP 217-270



1084.24



PROTECTIVE MIDSOLE

**KEVLAR**  
(PT) Kevlar  
(ES) Kevlar  
(FR) Kevlar  
(DE) Kevlar  
(NL) Kevlar

PROTECTIVE TOE CAP

**STEEL**  
(PT) Aço  
(ES) Acero  
(FR) Acier  
(DE) Stahlkappe  
(NL) Staal

SOLE

**DIRECT INJECTED PU + RUBBER**  
(PT) PU Diretamente Injetado + Borracha  
(ES) PU inyectado directo + Caucho  
(FR) PU Injecté Directement + Nitril  
(DE) Direkt Eingespritztes PU + Gummi  
(NL) Direct geïnjecteerd PU + Rubber

UPPER RAW MATERIAL

**PINK NUBUCK LEATHER**  
(PT) Pele Nubuck Rosa  
(ES) Cuero Nobuck Rosa  
(FR) Cuir Nubuck Rose  
(DE) Rosa Nubuck Leder  
(NL) Roze Nubuckleer

LINING MATERIAL

**BLACK PACIFIC TEXTILE**  
(PT) Têxtil Pacific preto  
(ES) Textil Pacific negro  
(FR) Textile Pacific noir  
(DE) Schwarz Pacific textil  
(NL) Textiel Pacific zwart



# ACCESSORIES

## SPODOS INSOLES

SIZE 36 - 47



THE FLAT FOOT AND THE FOOT CAVITY ARE ANATOMICAL VARIATIONS OF THE INNER ARCH OF THE FOOT. THESE VARIATIONS CAUSE LOSS OF EFFICIENCY IN DAMPING AND SHOCK ABSORPTION.



**FLAT FEET**  
9999.95



**NORMAL FEET**  
9999.96



**ARCH FEET**  
9999.97



### FEATURES

#### HEALTH OF YOUR FEET:

- ANTI-MICROBIAL
- ACTIVE CARBON
- THERMOREGULATORY EFFECT
- STEAM PERMEABLE
- 100% BREATHABLE
- WASHABLE

#### THINKING ABOUT COMFORT:

- ANTI-FATIGUE
- EXTRA LIGHT
- HIGH ABSORPTION CAPACITY
- HIGH MEMORY CAPACITY
- DIFFERENT DENSITIES

#### ECOFRIENDLY:

- MADE FROM RECYCLED MATERIALS

#### OTHER FEATURES:

- RESISTANT TO ABRASION
- ANTI-STATIC

## CHROMIUM FREE

9999.12

SIZE 36 - 47

- CORK AND NATURAL LEATHER
- BREATHABLE
- THERMOREGULATORY EFFECT



## LAVORO X-MAX

9999.13

SIZE 36 - 47



## PRO SOCKS

9999.79

SIZE 35 - 38 / 39 - 42 / 43 - 45



## ECO SOCKS

9999.73

SIZE 38 - 42 / 43 - 47



SELECTED PREMIUM MATERIALS AND ACCURATE DESIGN TO KEEP YOUR FEET FEELING COOL, DRY AND FRESHER FOR LONGER.

## SOCKS DISPLAY



## SHOE POLISH

9999.90

SIZE 100MM / 130MM / 155MM / 200MM



## SHOE POLISH

9999.35



AS EVEN MINOR IRRITATIONS CAN REDUCE MOBILITY OR PRODUCTIVITY AND INCREASE ABSENTEEISM, IT IS IMPORTANT, UNDER ANY FOOT HEALTH CIRCUMSTANCE, TO GET ADVICE FROM A PODIATRIST - WHICH **LAVORO** MAKES AVAILABLE THROUGH **SPODOS**, ITS FOOT SCIENCE CENTER. AFTER ALL, AS A CELEBRATED PROVERB SAYS,

**“EVEN THE TALLEST TOWERS BEGIN ON THE GROUND”**



## SPODOS HELPS COMPANIES TO TAKE CARE OF THE QUALITY OF LIFE OF THE FOOT IN THE WORK CONTEXT:

1. HELPS TO DESIGN THE MOST APPROPRIATE MODELS FOR EACH WORK ENVIRONMENT;
2. ACCOMPANY THE PRODUCTION OF EACH MODEL;
3. IT CHARACTERIZES THE WORK ENVIRONMENTS AND ADVISES THE COMPANIES AFTER IDENTIFYING THE NEEDS OF EACH ONE;
4. ANALYZE FEET OF PROFESSIONAL GROUPS (USING PRESSURE PLATFORM, SPODOS PRINT, AND 3D SCANNING, SPODOS 3D);
5. DIAGNOSE PATHOLOGIES OF THE FOOT AND SUGGESTS THERAPIES;
6. RECOMMENDS THE BEST TYPOLOGY OF FOOTWEAR THAT SUITS THE CHALLENGES OF THE DIFFERENT PROFESSIONS;
7. SUPERVISES ITS EFFICIENCY IN SITU, TO ENHANCE PROTECTION RATES AS WELL AS THE FOOT'S HEALTH.
8. ENCOURAGES TRAINING AND AWARENESS ACTIVITIES.

# SUSTAINABLE BY NATURE



# CCS CLIMA CORK SYSTEM



**CLIMA CORK SYSTEM (CCS)** IS AN EXCLUSIVE SYSTEM OF LAVORO, WHICH ALLOWS THE CREATION OF A NATURAL ENVIRONMENT FOR THE FEET, BOTH IN THE FIELD OF TEMPERATURE AND THEIR ACCOMMODATION IN SHOES.

THROUGH THE INCLUSION OF AN INSULATING LAYER OF CORK BETWEEN THE SOLE AND THE INSOLE, **CLIMA CORK SYSTEM** REGULATES THE HEAT AND COLD INSIDE THE FOOTWEAR AND GIVES EXTRA COMFORT. THE CORK ALLOWS THE CREATION OF A KIND OF "FOOTPRINT", FAVORS ITS ADAPTATION TO THE SHOE, AND CONTRIBUTES TO THE REDUCTION OF FATIGUE, BY BENEFITING THE UNIFORM DISTRIBUTION OF THE WEIGHT.



# LEATHER IS BACK

WITH TRACED AND 100% BIODEGRADABLE PRODUCTION, RESPONSIBLE LEATHER GUARANTEES A SUSTAINABLE FUTURE FOR THE PLANET AND EXTRA COMFORT FOR PROFESSIONALS IN A WIDE VARIETY OF ACTIVITIES.

ITS USE IN SAFETY FOOTWEAR PROVIDES USERS WITH LONG-TERM BENEFITS EVERY DAY AND OVER THE YEARS. FURTHERMORE, BECAUSE THE LEATHER MAINTAINS ITS ESSENTIAL CHARACTERISTICS OF RESISTANCE TO FIRE AND ABRASION AND WATER REPELLENCY; EASY TO MAINTAIN AND IDEAL ELASTICITY FOR ALL MOVEMENTS. HYPOALLERGENIC, IT ALSO PROMOTES PERSPIRATION.

AT LAVORO WE THEREFORE CONTINUE TO BELIEVE IN THIS SPECIAL RAW MATERIAL, APPLYING ONLY RESPONSIBLE LEATHER IN OUR DURABLE SAFETY SHOES.



# PPE STANDARDS

## SAFETY FOOTWEAR STANDARDS

### EN ISO 20345:2011

**SB** (SAFETY BASIC) – 200J (JOULE) TOECAP PROTECTION.

**S1** – SAME AS **SB** + CLOSED HEEL, ANTISTATIC PROTECTION AND ENERGY ABSORPTION IN THE HEEL.

**S2** – SAME AS **S1** + WATERPROOF EXTERIOR TO PREVENT WATER PENETRATION.

**S3** – SAME AS **S2** + MIDSOLE PENETRATION RESISTANCE TO PREVENT SHARP OBJECTS FROM PENETRATING THE FOOTWEAR AND DAMAGING YOUR FOOT.

### EN ISO 20345:2022

**S6** – NEW RATING INTRODUCED BY THE NEW NORM (20345:2022). SAME AS **S2** + WATER RESISTANCE FOR THE WHOLE PIECE OF FOOTWEAR.

**S7** – NEW RATING INTRODUCED BY THE NEW NORM (20345:2022). SAME AS **S3** + WATER RESISTANCE FOR THE WHOLE PIECE OF FOOTWEAR.

## SLIP-RESISTANCE RATINGS

### EN ISO 20345:2011

**SRA** – TESTED ON CERAMIC TILE WETTED WITH DILUTE SOAP SOLUTION.

**SRB** – TESTED ON SMOOTH STEEL WITH GLYCEROL;

**SRC** – TESTED UNDER BOTH THE ABOVE CONDITIONS.

### EN ISO 20345:2022

**SR** – SLIP RESISTANCE – ON CERAMIC TILE FLOOR WITH GLYCERINE.

**Ø** – HAS NOT BEEN TESTED ACCORDING TO THIS STANDARD AS IT OFFERS STUDS OR SPIKES, OR IS FOR USE WITHIN SPECIAL WORKPLACES AND IS THEREFORE NOT APPLICABLE.

## ADDITIONAL REQUIREMENTS

**A** – ANTISTATIC – PROTECTS AGAINST STATIC ELECTRICAL CHARGES.

**AN** – ANKLE PROTECTION.

**C** – PARTIALLY CONDUCTIVE FOOTWEAR.

**CI** – COLD INSULATION

**CR** – CUT-RESISTANT UPPER

**E** – ENERGY ABSORPTION OF SEAT REGION

**FO** – RESISTANCE TO FUEL OIL

**HI** – HOT INSULATION

**HRO** – RESISTANCE TO HOT CONTACT AT 300°C.

**PL** – PENETRATION RESISTANCE (NON-METAL) – PENETRATION

**LG** – LADDER GRIP OUTSOLE.

**M** – METATARSAL PROTECTION (IMPACTS UP TO 100J)

**P** – PERFORATION RESISTANCE (METAL).TESTED WITH LARGE NAIL (Ø 4,5MM)

**PS** – PENETRATION RESISTANCE (NON-METAL) – PENETRATION TESTED WITH SMALL NAIL (Ø 3,0MM)

**SC** – SCUFF CAP ABRASION.

**WPA** – WATER PENETRATION AND ABSORPTION.

**WR** – WATER-RESISTANT W/ WATERPROOF MEMBRANE

# SIZE CHART

Tabela de Tamanhos | Carta del Tamaño | Tableau des tailles | Größentabelle | Maattabel

MONDOPOINT R2 (MM)	EU	UK
202	33	1 1/2
210	34	2
217	35	2 1/2
225	36	3
232	37	4
240	38	5
247	39	6
255	40	6 1/2
262	41	7
270	42	8
277	43	9
285	44	10
292	45	10 1/2
300	46	11
307	47	12
315	48	13
322	49	14
330	50	14 1/2
337	51	15
345	52	16
352	53	17





# LAVORO

ENGINEERING LIFE



LAVORO EUROPE  
SOL-PINHEIRO  
4810-718  
GUIMARÃES - PORTUGAL  
GPS. N 41° 25' 04" | W 08° 17' 29"  
T. +351 253 776 666  
F. +351 253 140 905  
INFO@LAVOROEUROPE.COM

ICC - Indústria e Comércio de Calçado S  
NIF: 501694200  
Capital social: €1 416 495,00  
Inscrita na C.R.C. Guimarães  
S.O. n.º 2495



In the interest of product development LAVORO reserves the right to change or amend the specifications of the products, without previous notice.